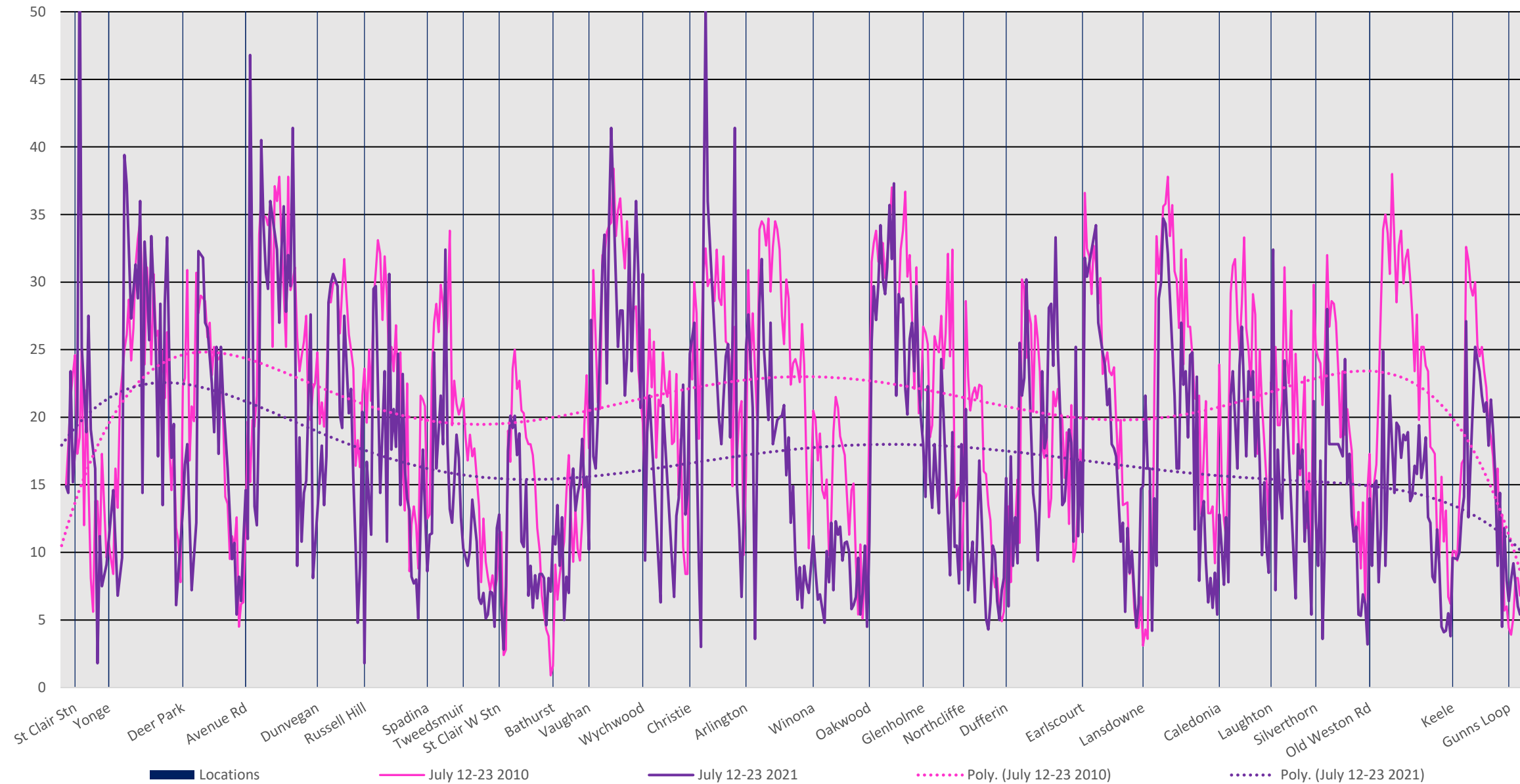
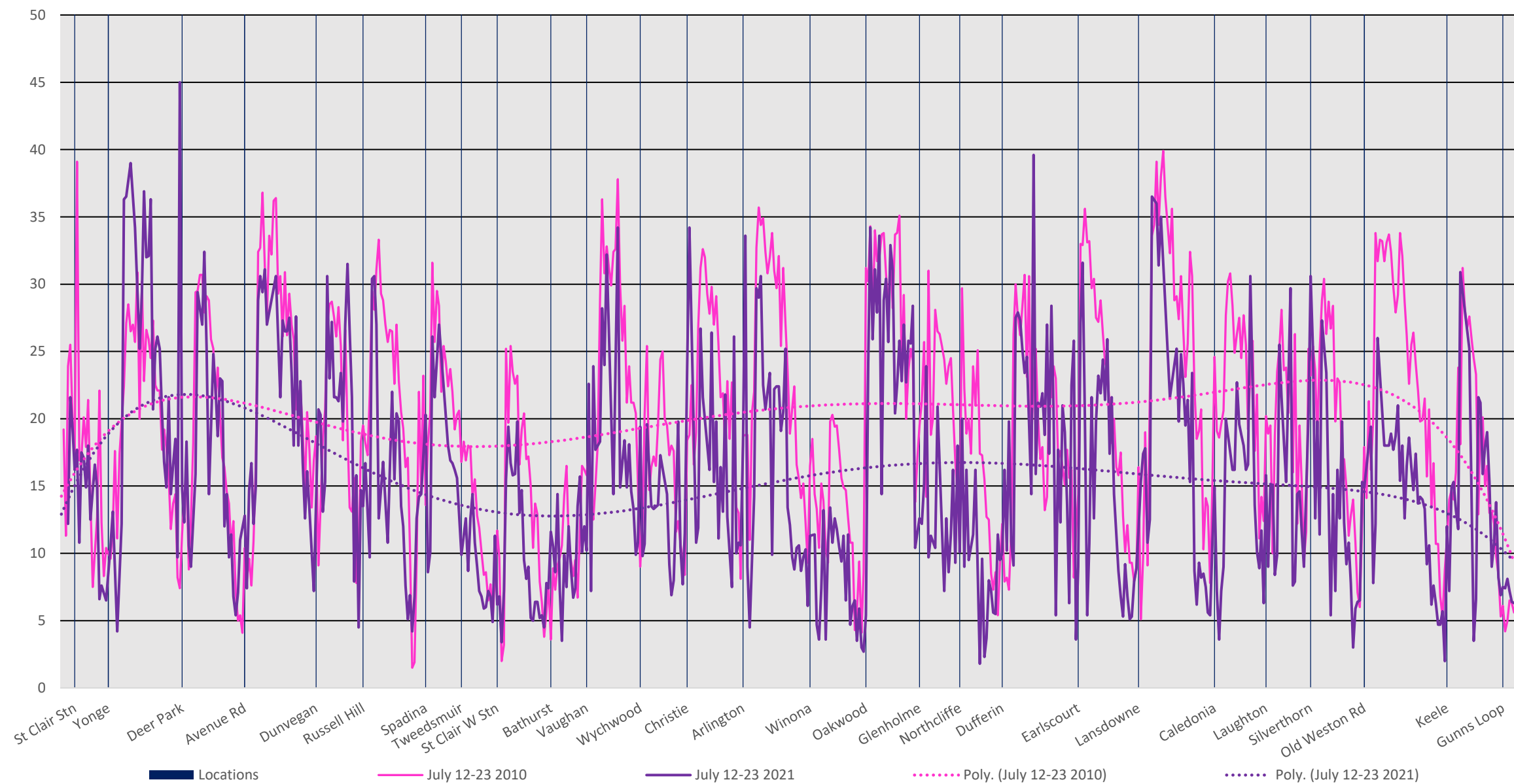


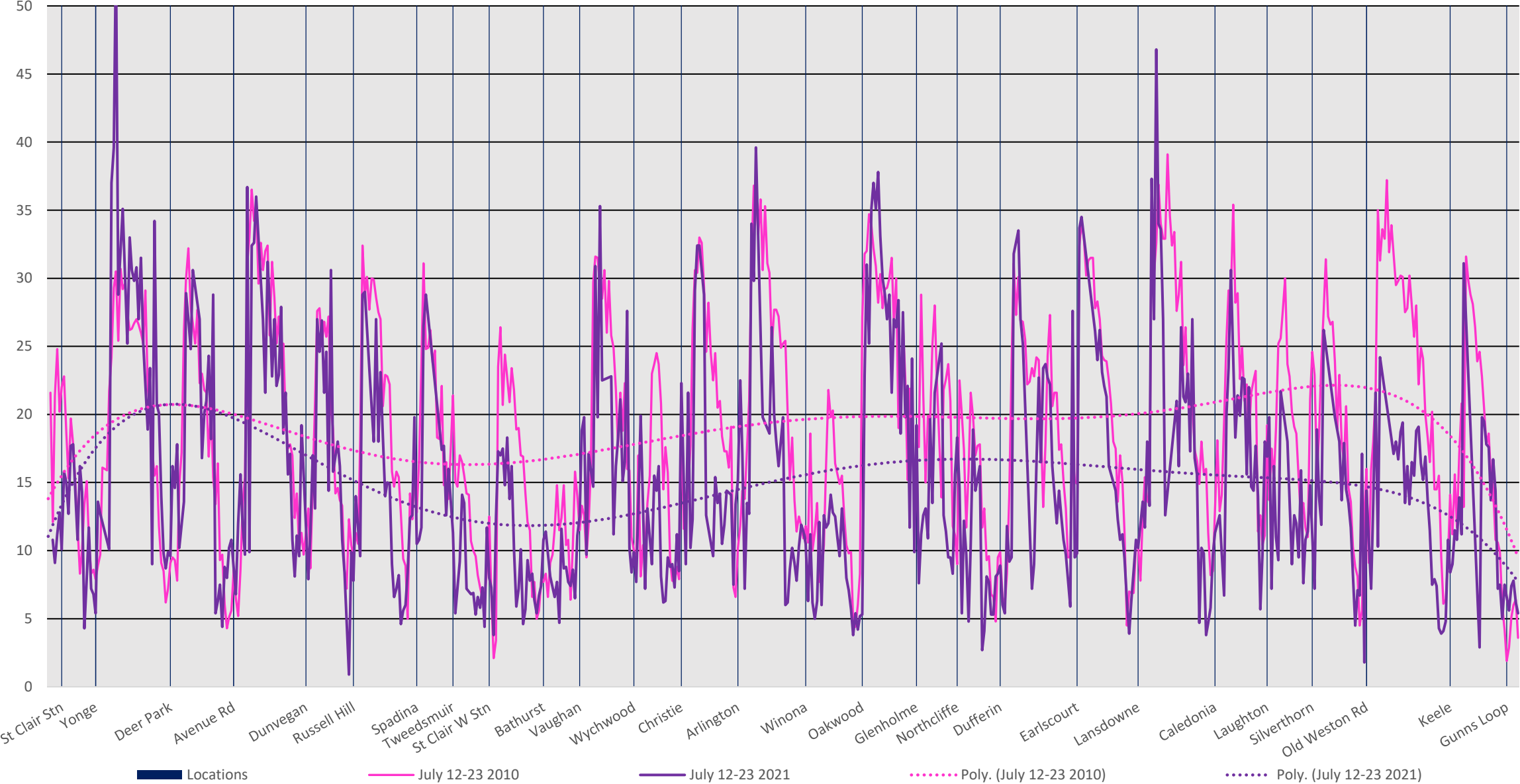
512 St. Clair Westbound 2010 vs 2021 Average Speed 600 to 700



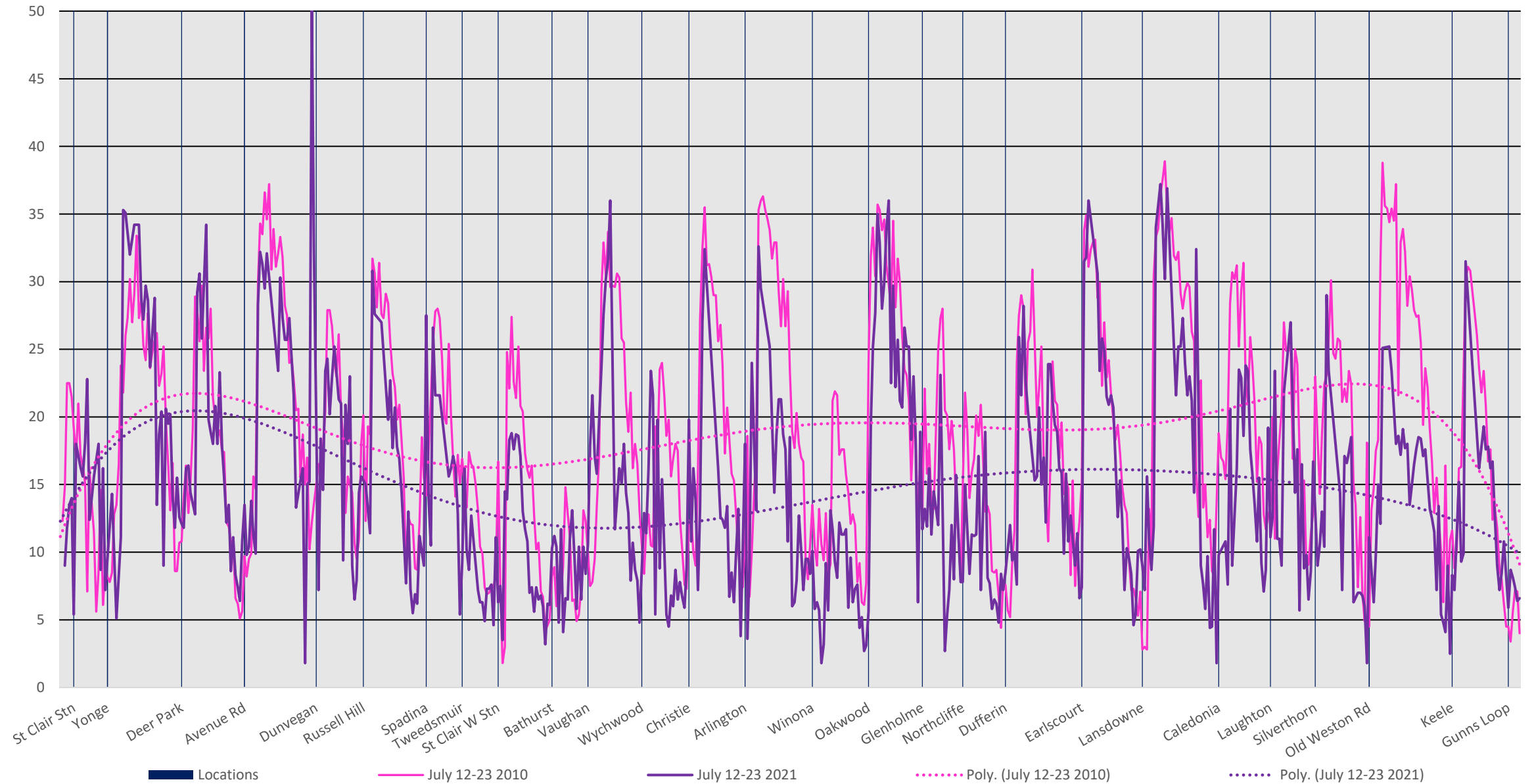
512 St. Clair Westbound 2010 vs 2021 Average Speed 700 to 800



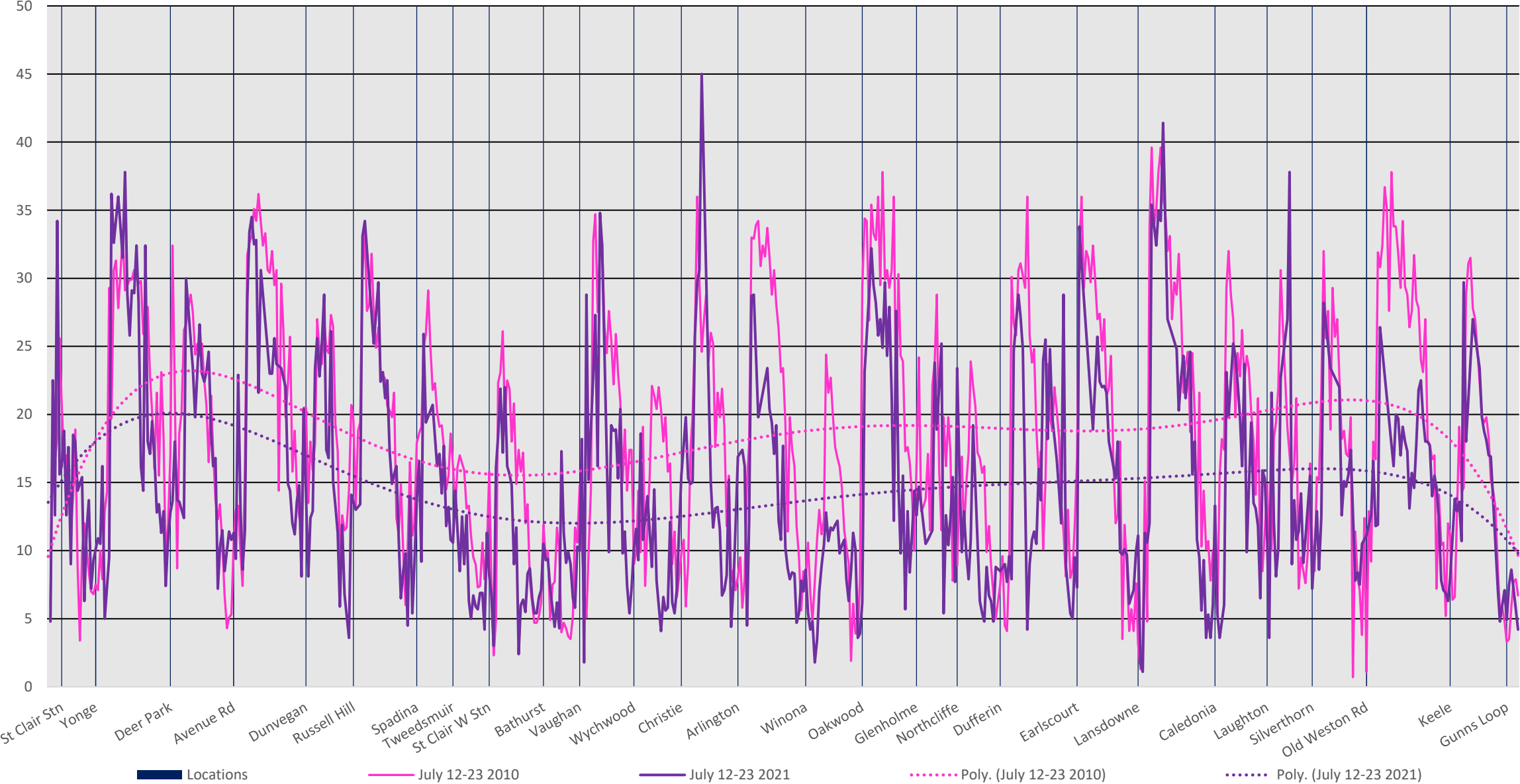
512 St. Clair Westbound 2010 vs 2021 Average Speed 800 to 900



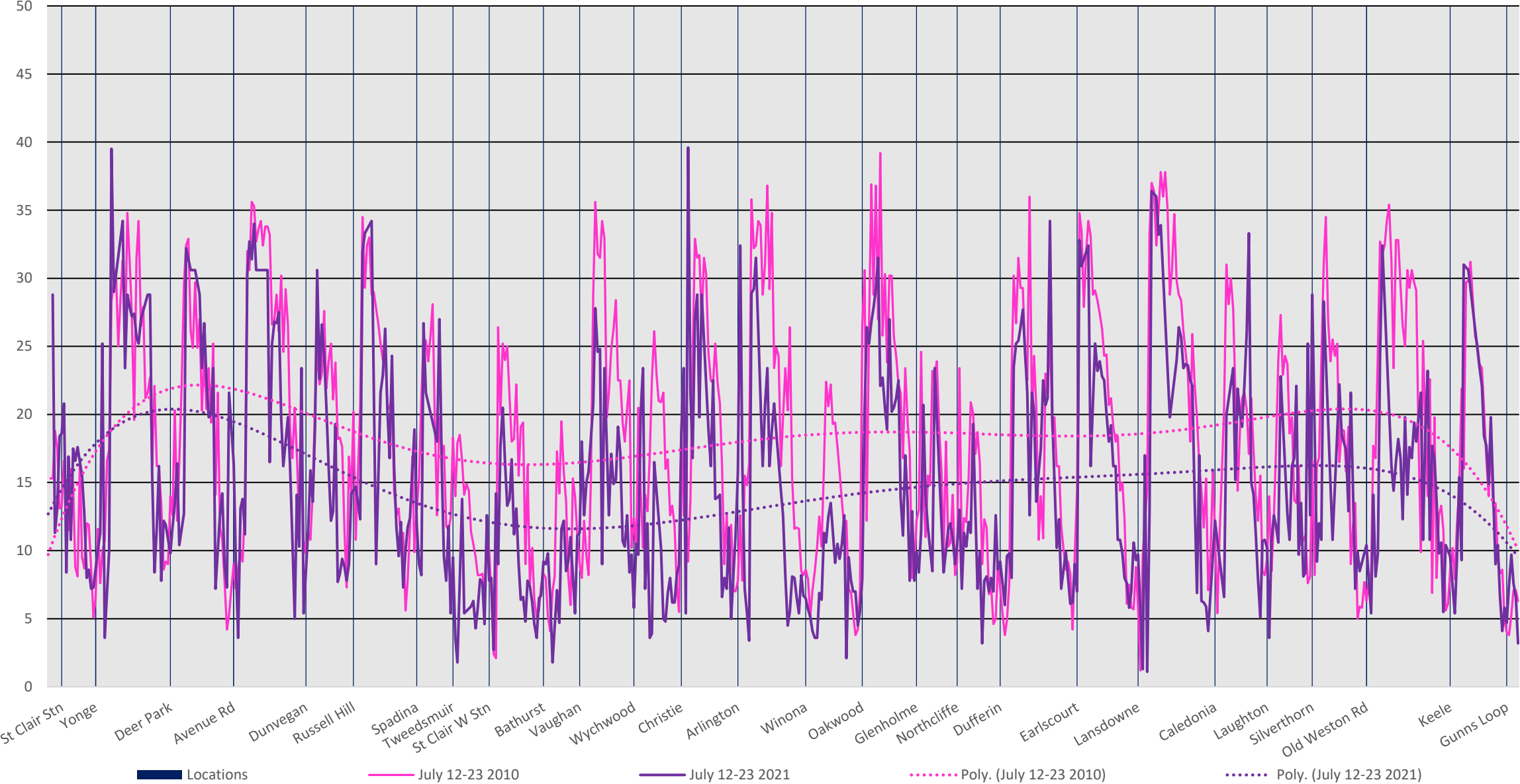
512 St. Clair Westbound 2010 vs 2021 Average Speed 900 to 1000



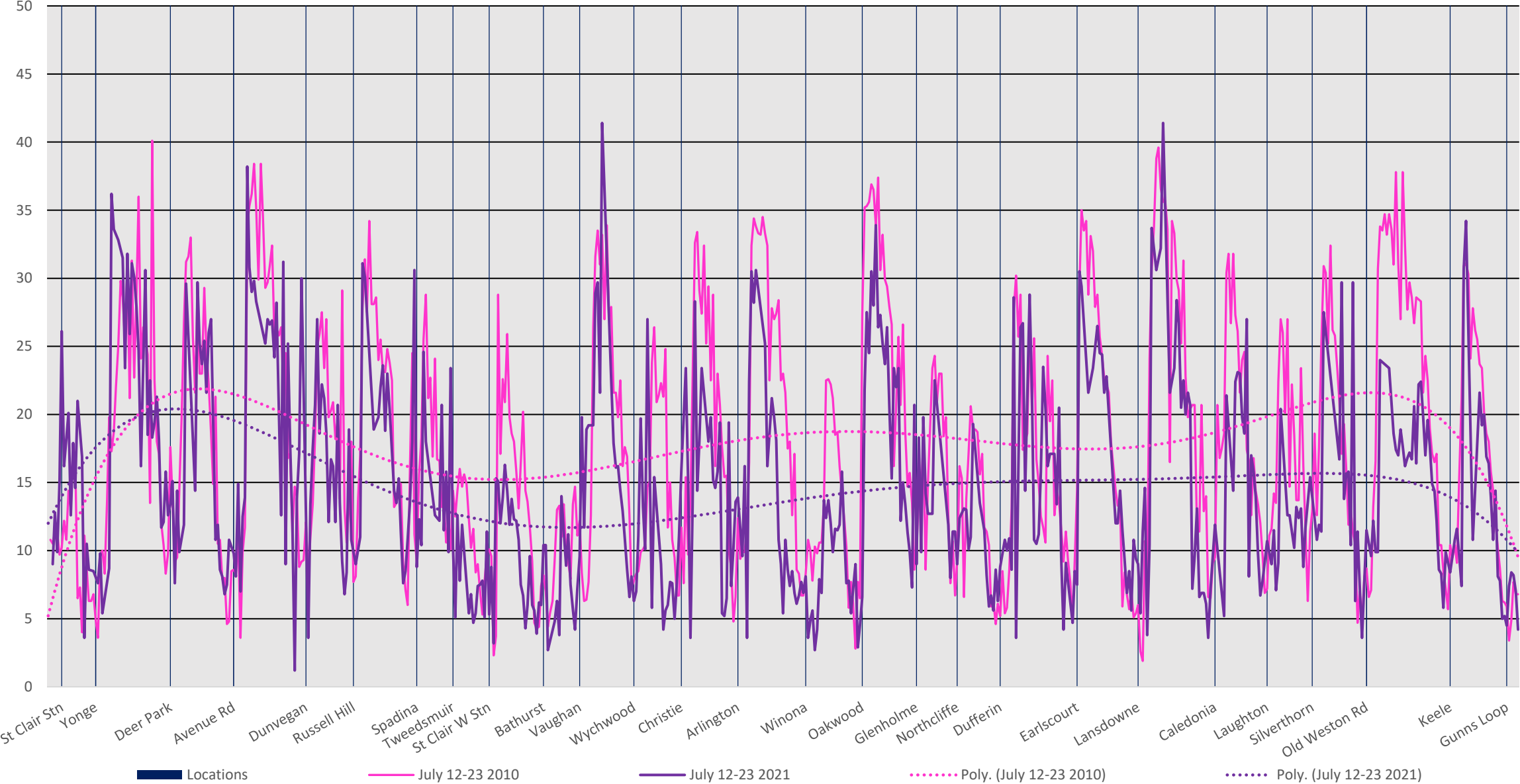
512 St. Clair Westbound 2010 vs 2021 Average Speed 1000 to 1100



512 St. Clair Westbound 2010 vs 2021 Average Speed 1100 to 1200

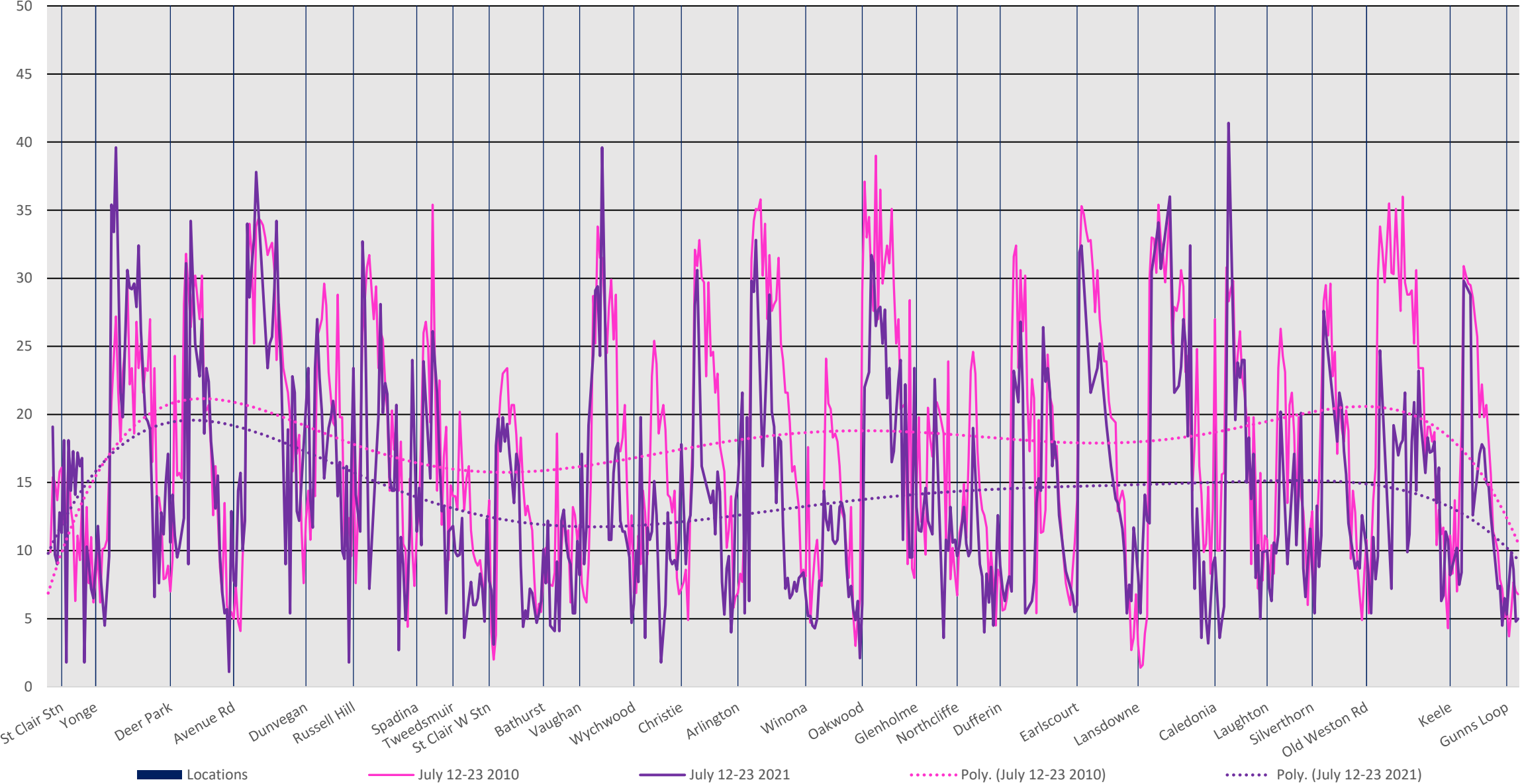


512 St. Clair Westbound 2010 vs 2021 Average Speed 1200 to 1300



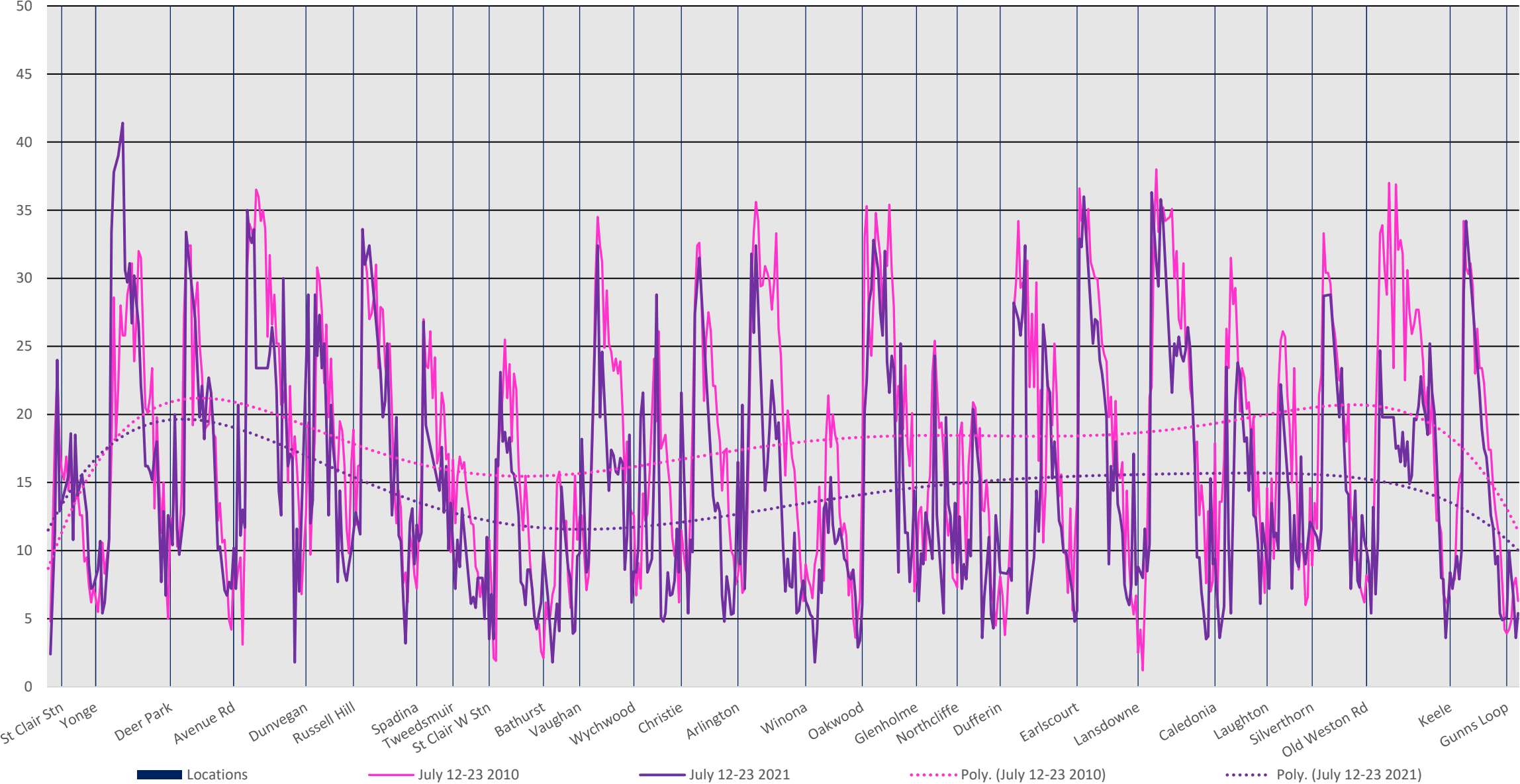


512 St. Clair Westbound 2010 vs 2021 Average Speed 1300 to 1400

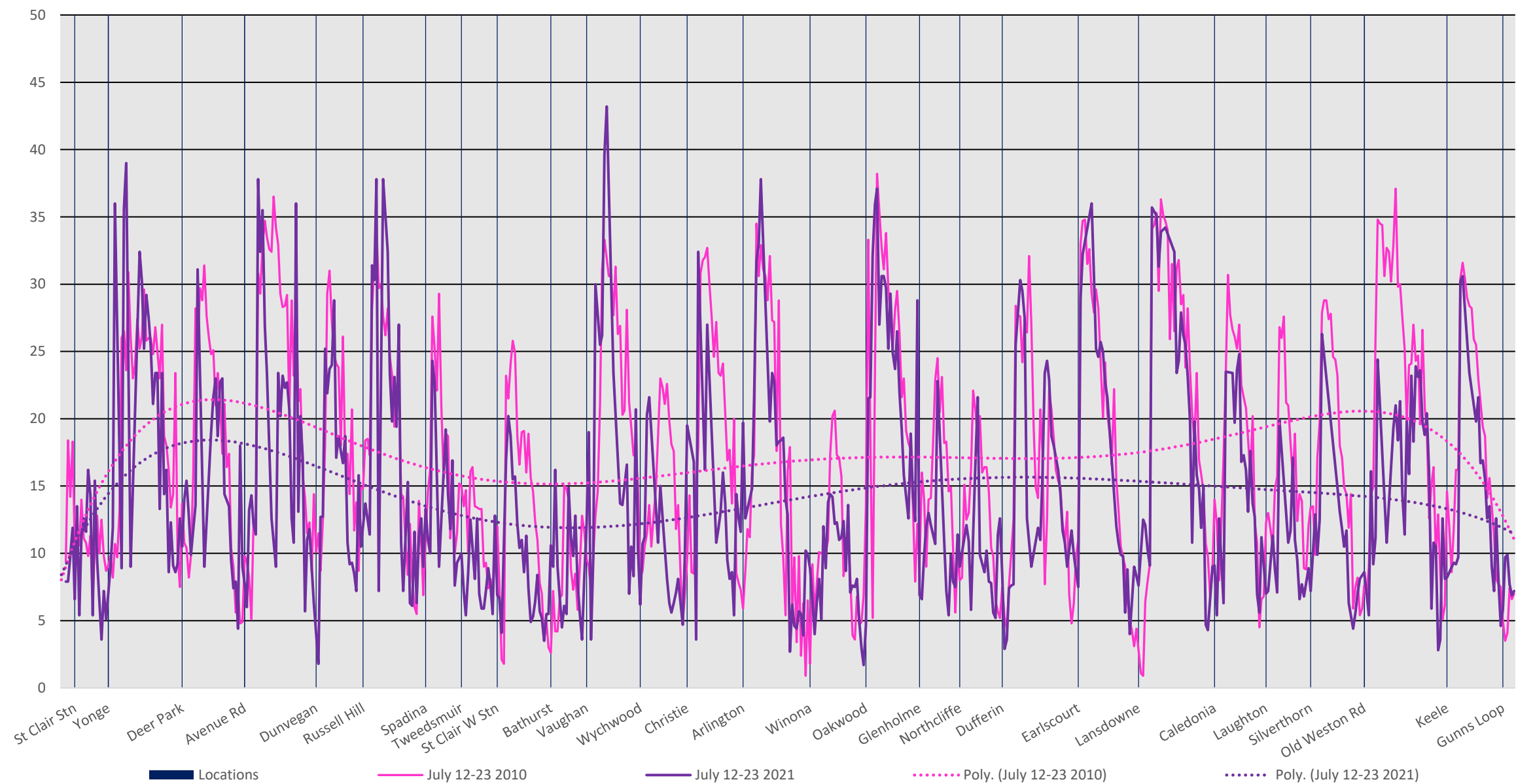




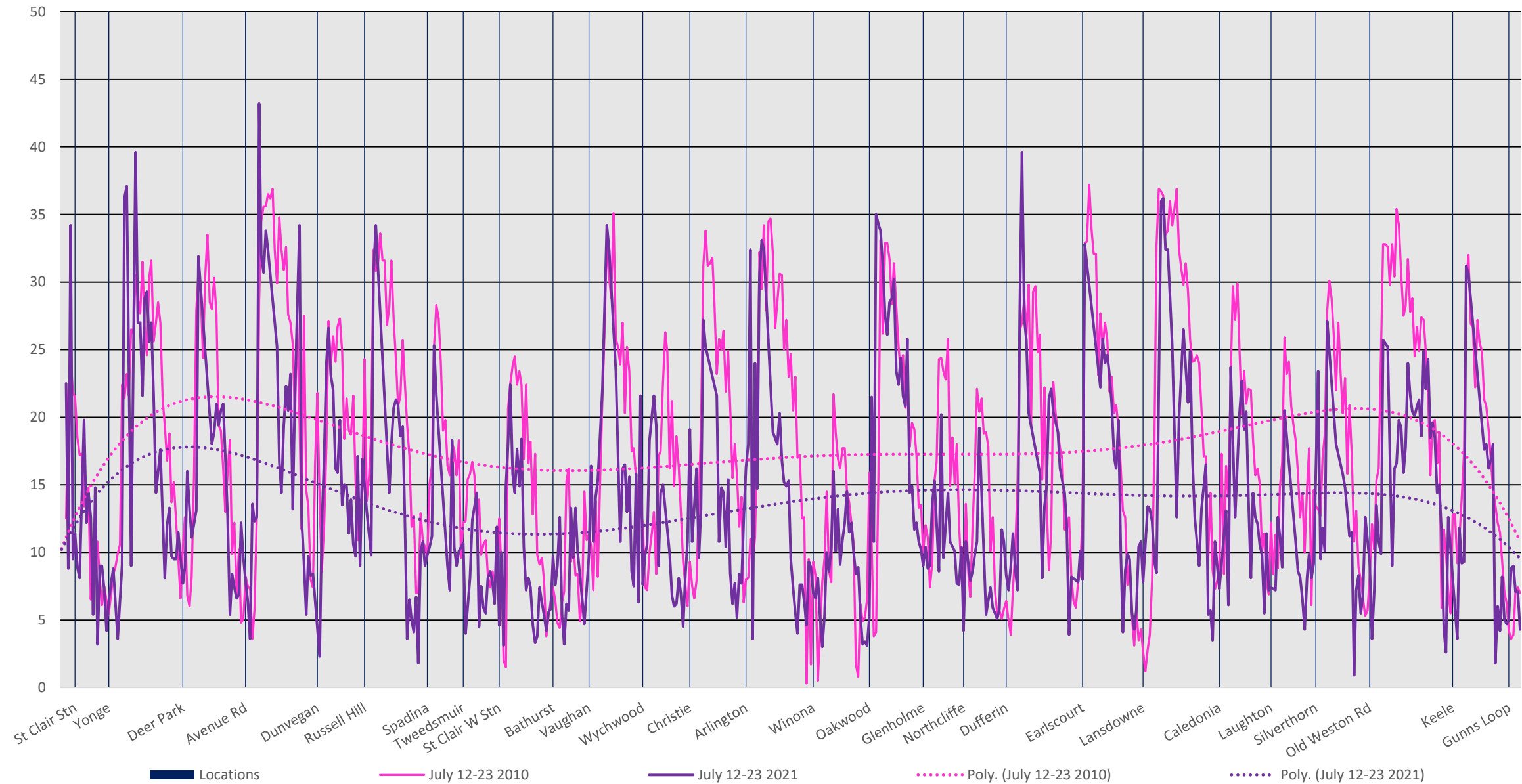
512 St. Clair Westbound 2010 vs 2021 Average Speed 1400 to 1500



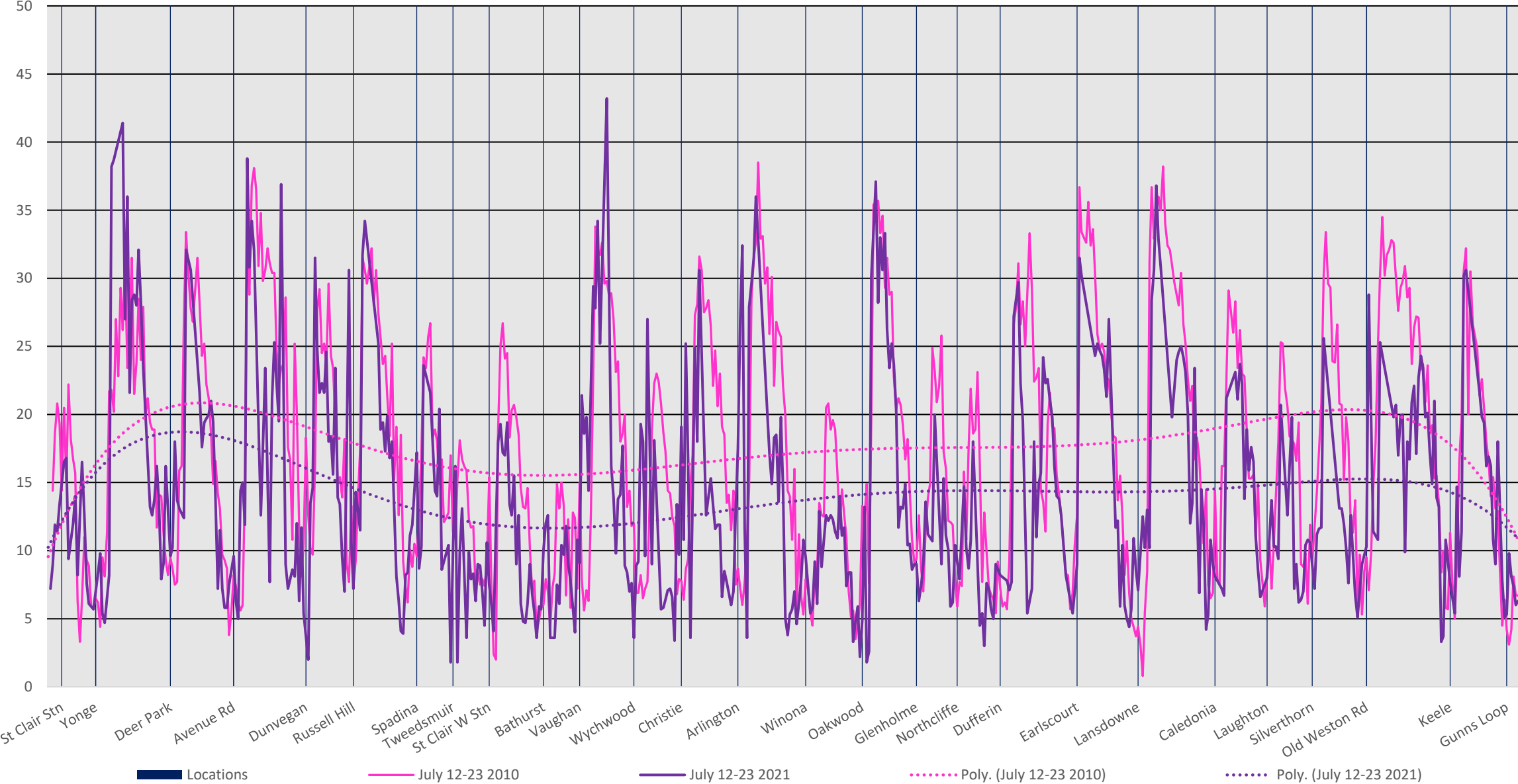
512 St. Clair Westbound 2010 vs 2021 Average Speed 1500 to 1600



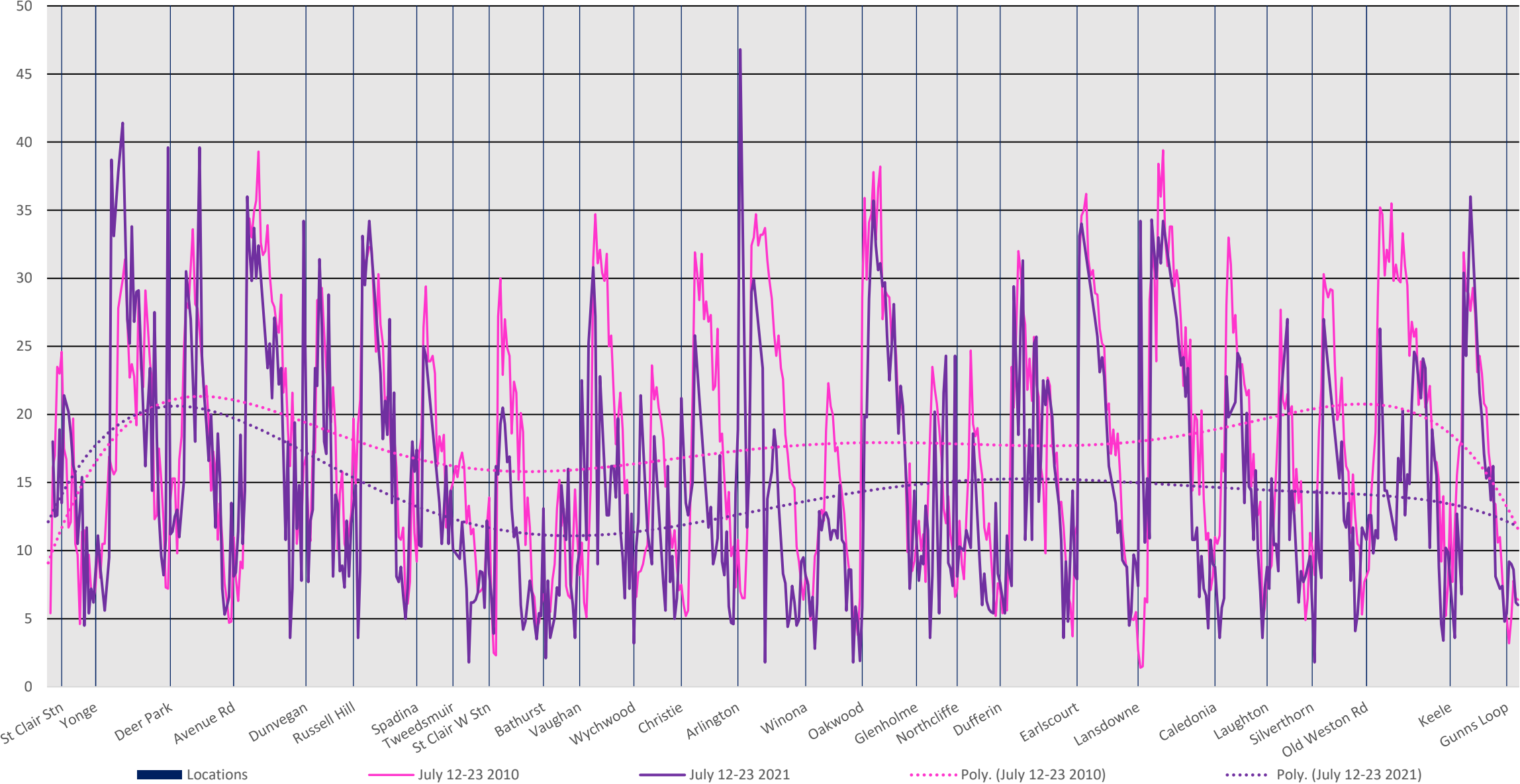
512 St. Clair Westbound 2010 vs 2021 Average Speed 1600 to 1700



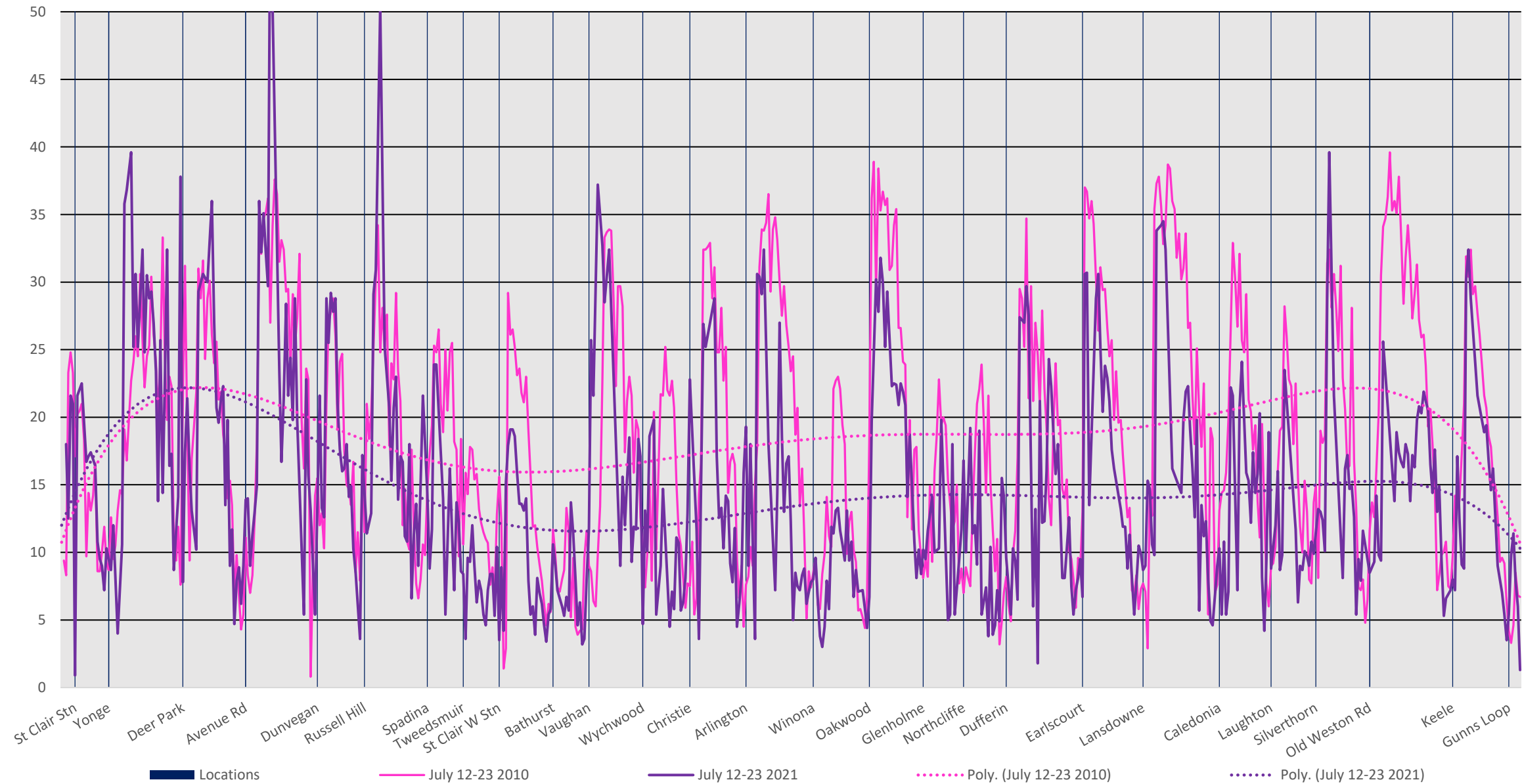
512 St. Clair Westbound 2010 vs 2021 Average Speed 1700 to 1800



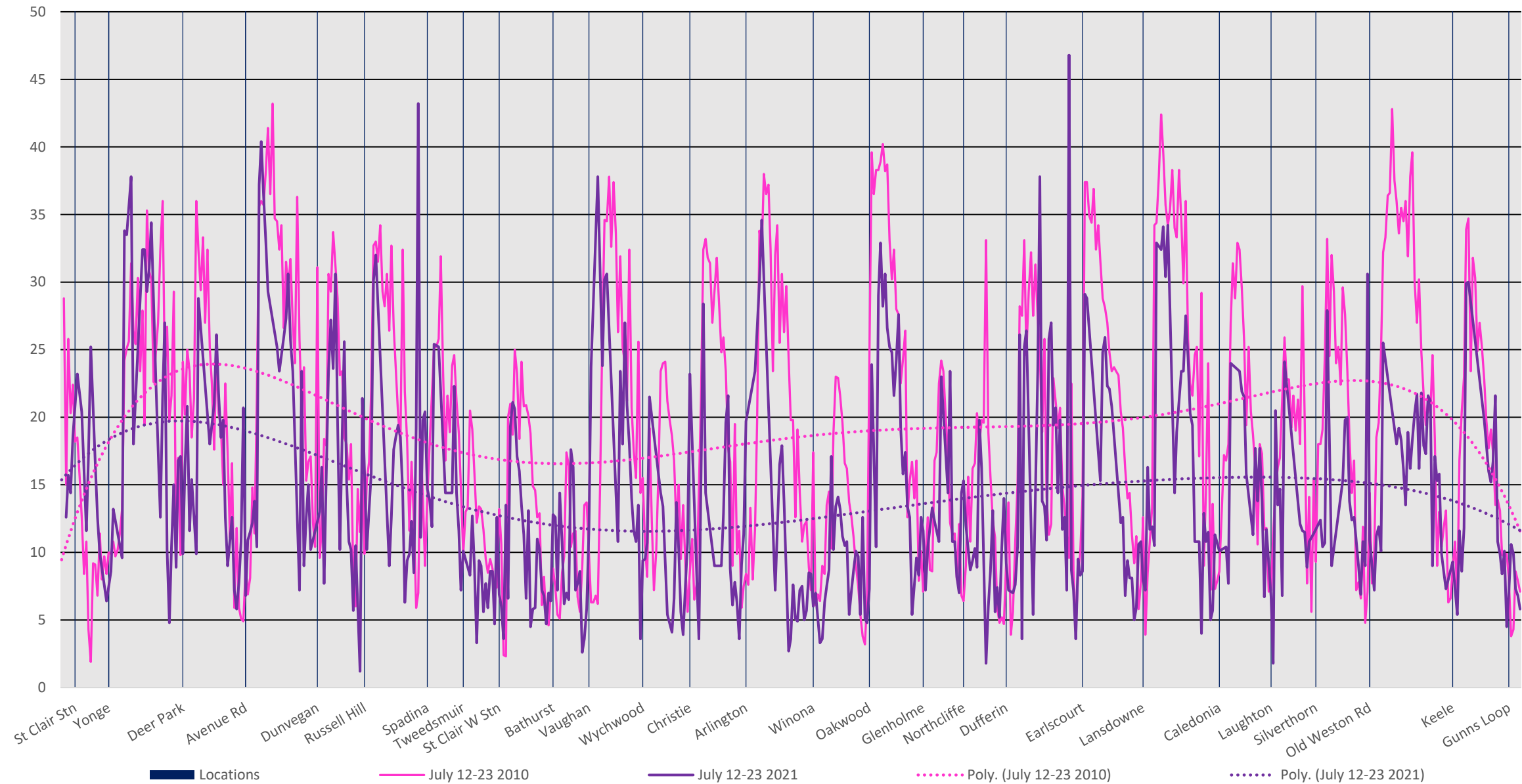
512 St. Clair Westbound 2010 vs 2021 Average Speed 1800 to 1900



512 St. Clair Westbound 2010 vs 2021 Average Speed 1900 to 2000

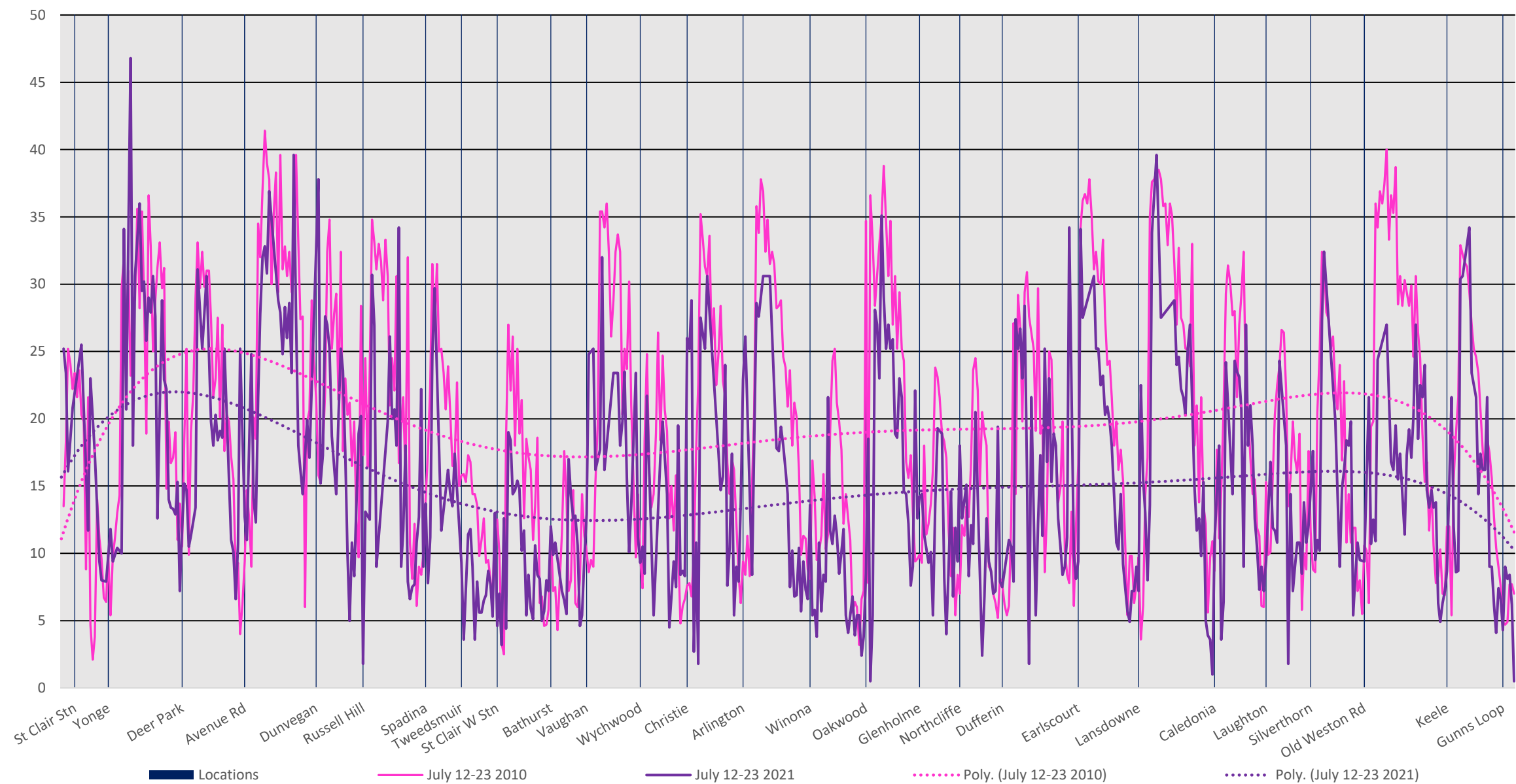


512 St. Clair Westbound 2010 vs 2021 Average Speed 2000 to 2100

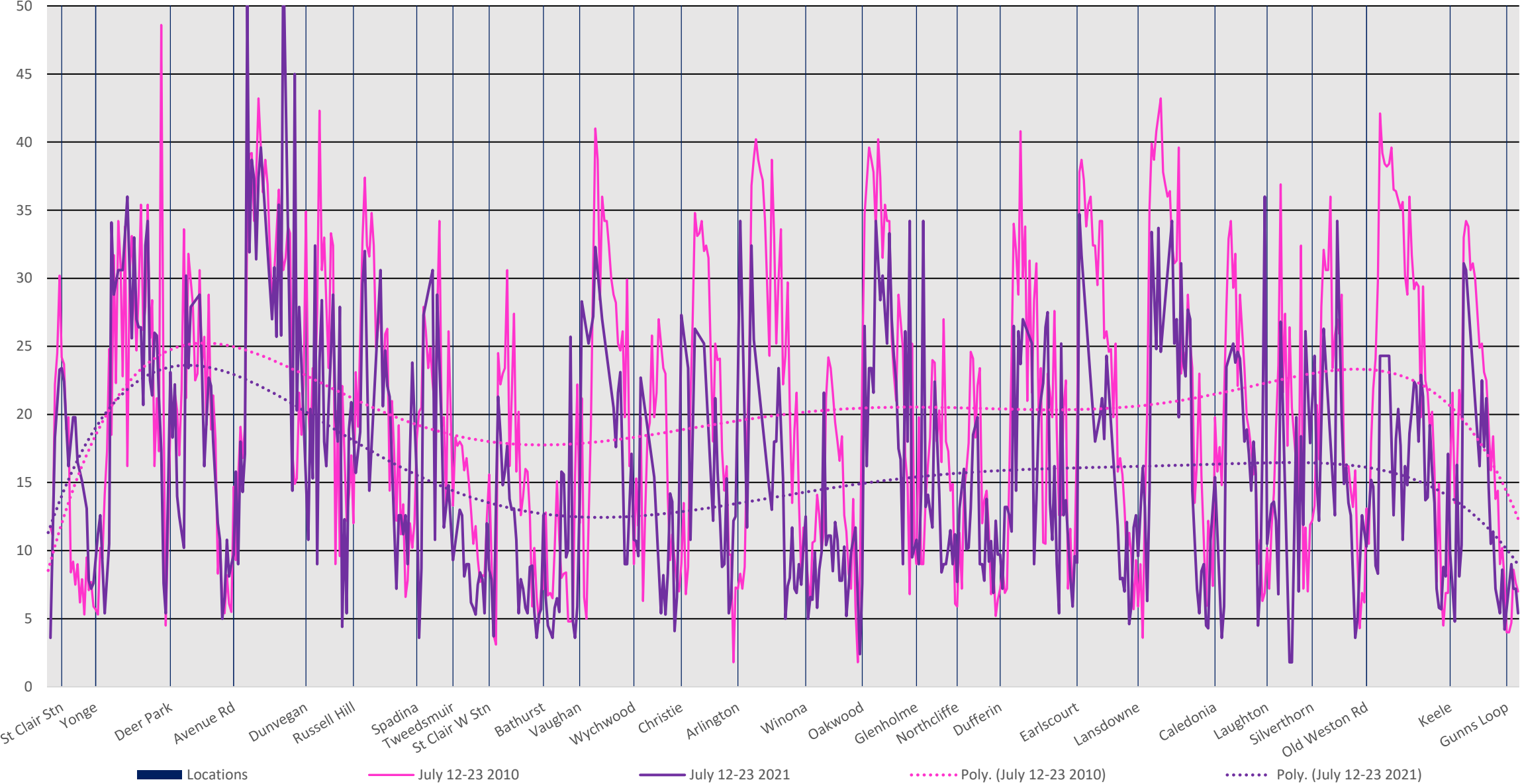




512 St. Clair Westbound 2010 vs 2021 Average Speed 2100 to 2200



512 St. Clair Westbound 2010 vs 2021 Average Speed 2200 to 2300



512 St. Clair Westbound 2010 vs 2021 Average Speed 2300 to 2400

