

929 Dufferin Express Headways at Transit Road Southbound June 2021 Weekday Statistics

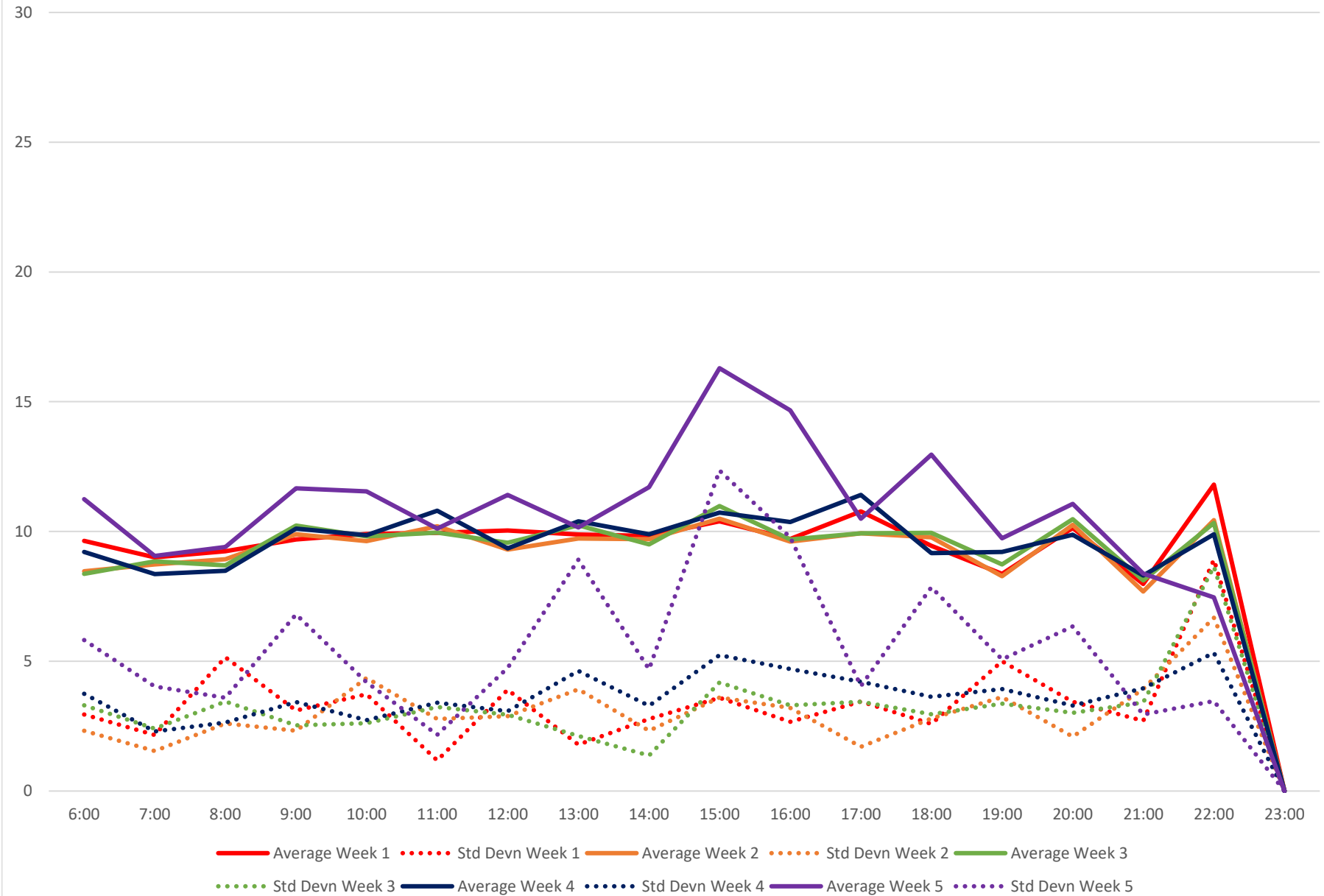
The chart displays headway data (in minutes) on the Y-axis (0 to 30) against time (in hours) on the X-axis (6:00 to 23:00). The data is categorized by week (Week 1 to Week 5) and includes both Average and Standard Deviation (Std Devn) values for each week.

Legend:

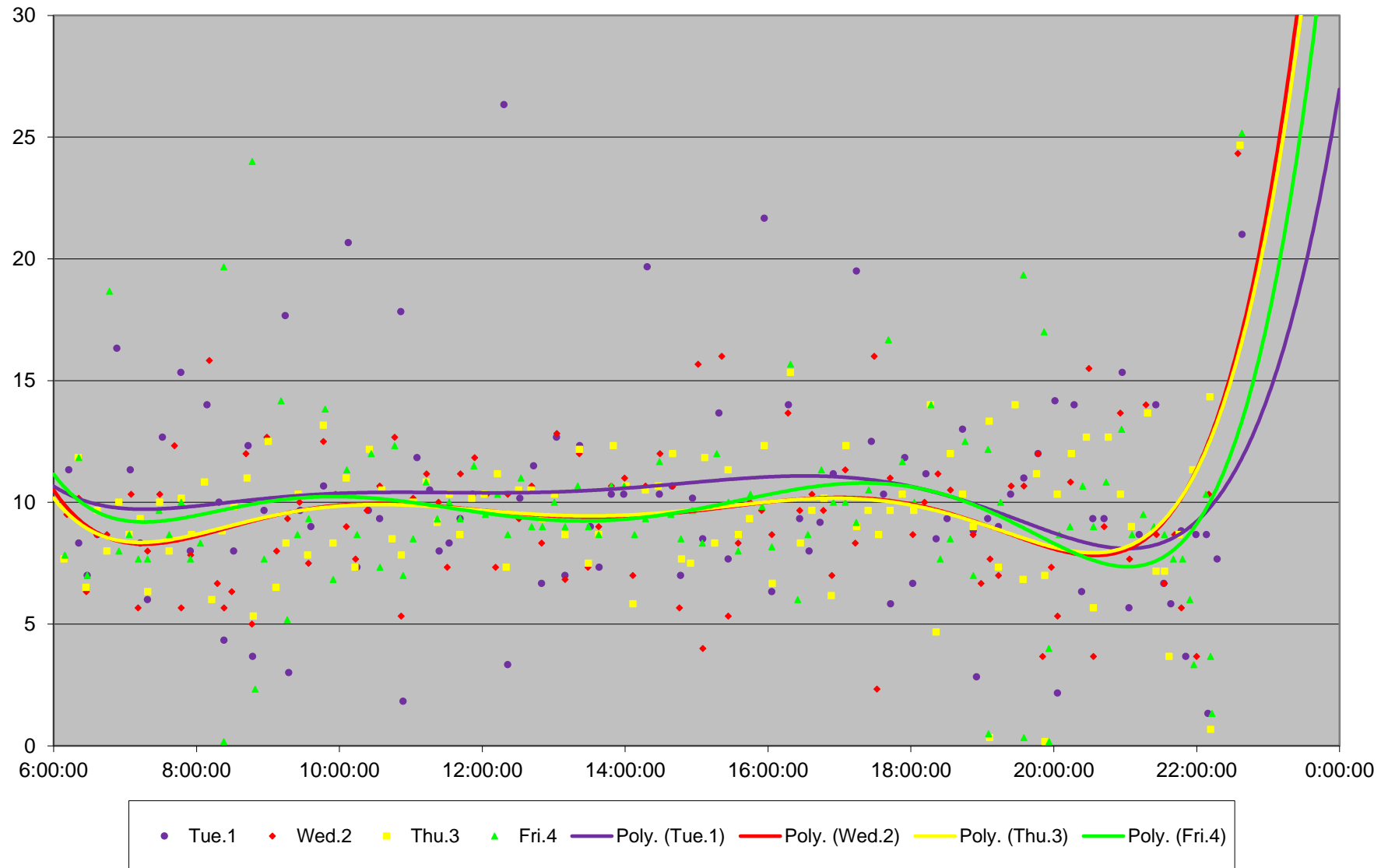
- Average Week 1 (Red solid line)
- Std Devn Week 1 (Red dotted line)
- Average Week 2 (Orange solid line)
- Std Devn Week 2 (Orange dotted line)
- Average Week 3 (Green solid line)
- Std Devn Week 3 (Green dotted line)
- Average Week 4 (Dark Blue solid line)
- Std Devn Week 4 (Dark Blue dotted line)
- Average Week 5 (Purple solid line)
- Std Devn Week 5 (Purple dotted line)

Key observations:

- Headways generally fluctuate between 2 and 12 minutes throughout the day.
- A significant peak in headways occurs around 15:00, reaching approximately 16 minutes for Week 5.
- Headways drop sharply after 22:00, reaching 0 minutes by 23:00.
- Week 5 consistently shows the highest average headways, particularly in the afternoon.

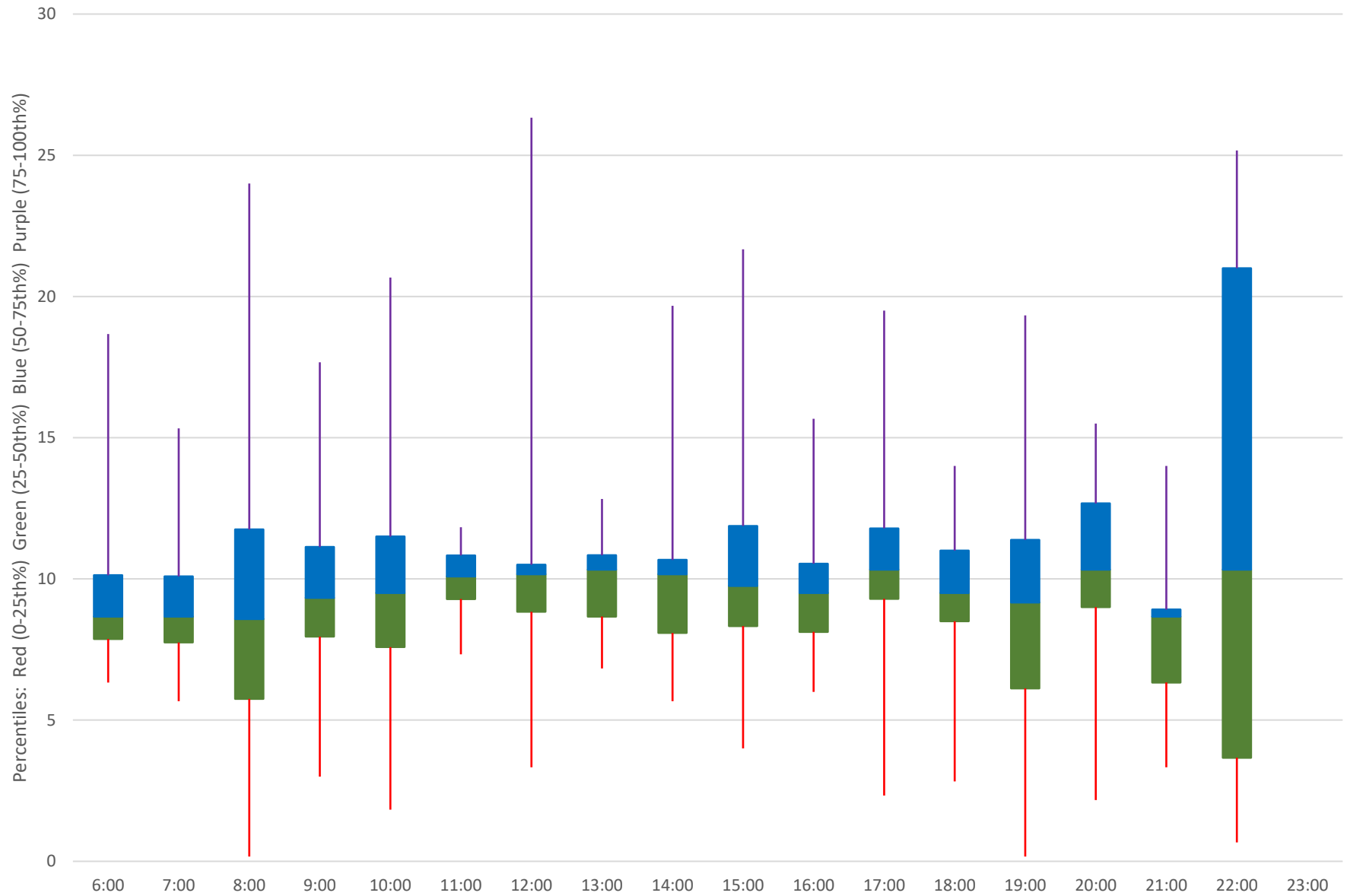


929 Dufferin Express Headways at Transit Road Southbound June 2021

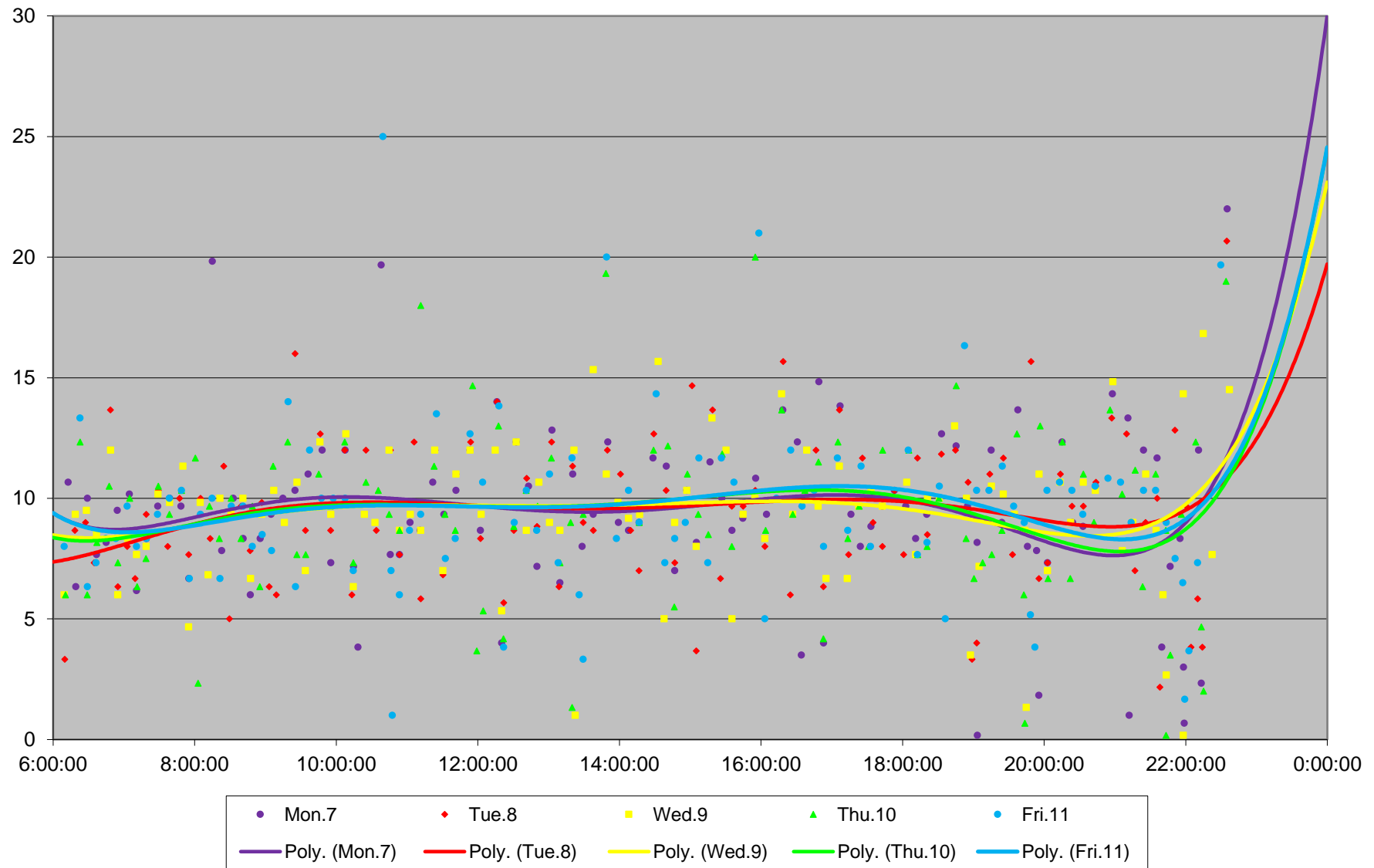


929 Dufferin Express Headways at Transit Road Southbound June 2021

Quartiles Week 1

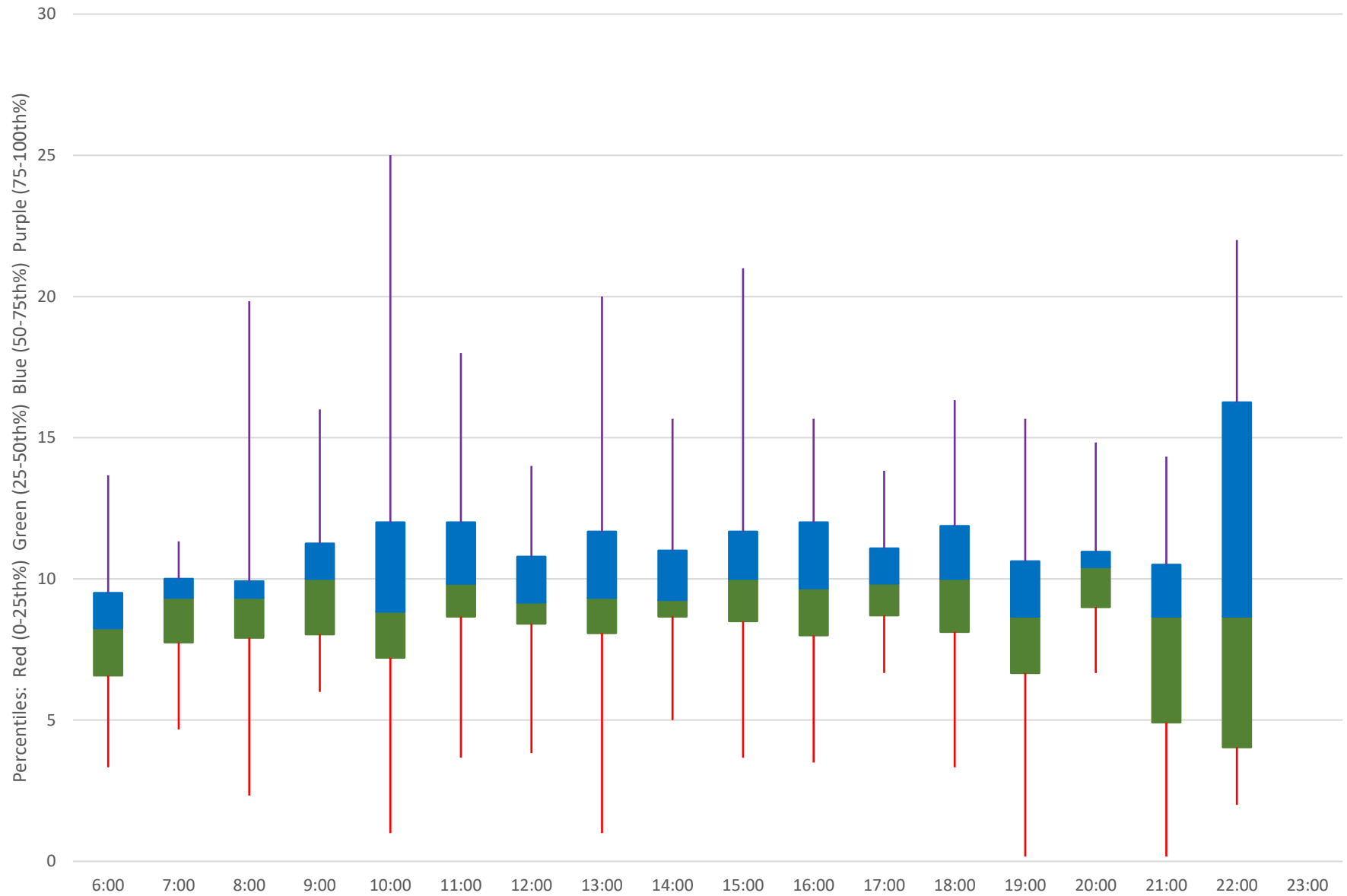


929 Dufferin Express Headways at Transit Road Southbound June 2021

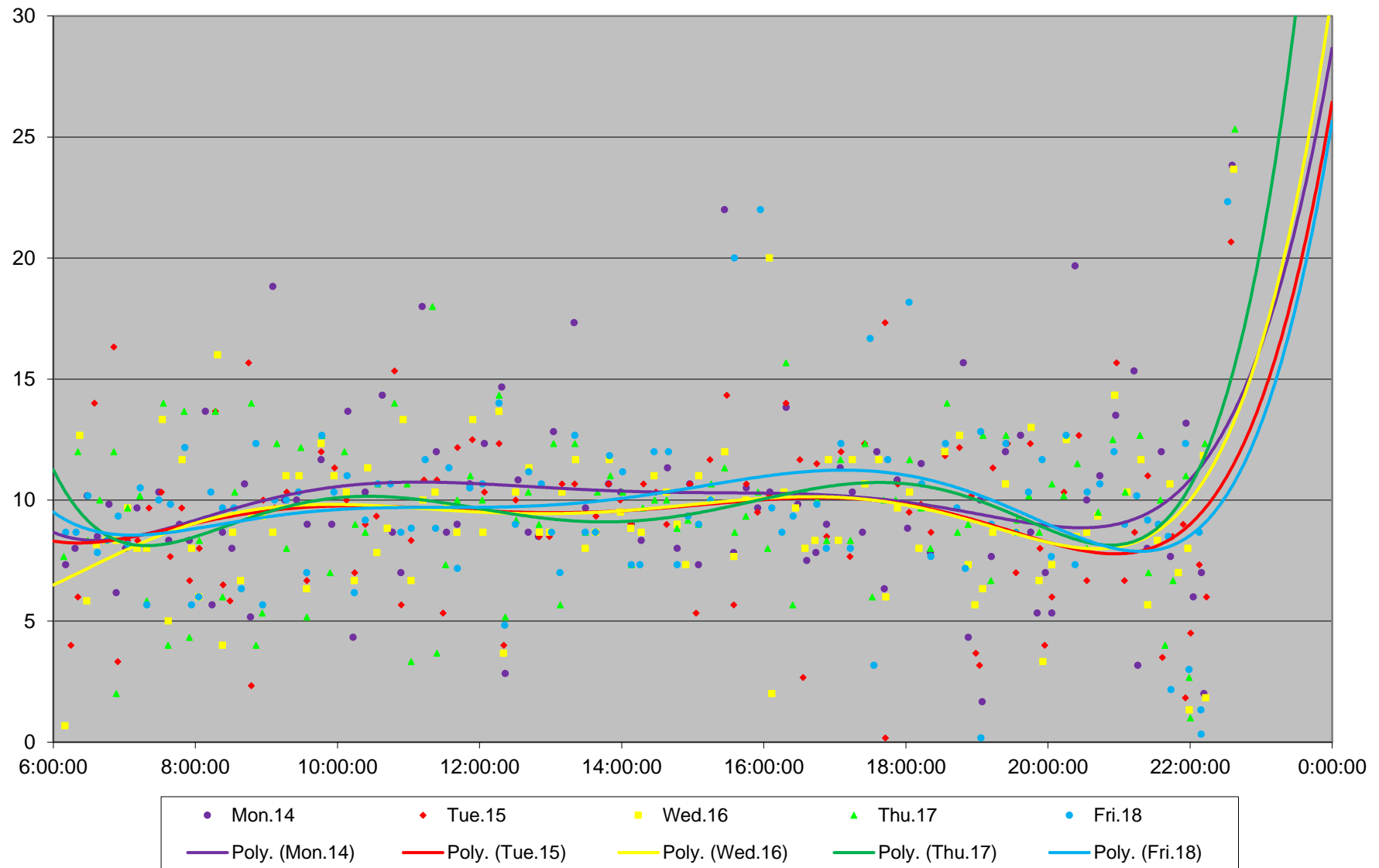


929 Dufferin Express Headways at Transit Road Southbound June 2021

Quartiles Week 2

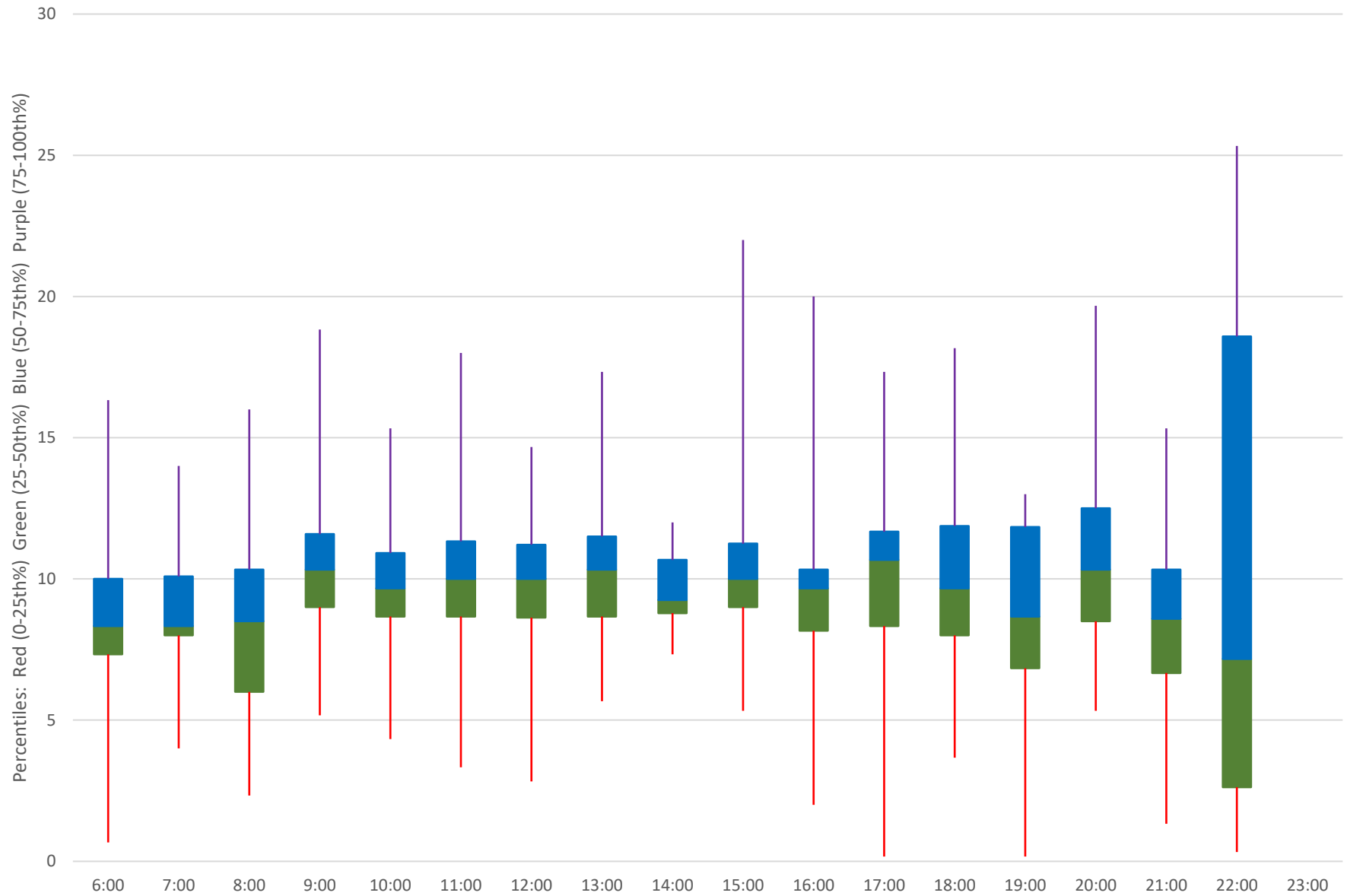


929 Dufferin Express Headways at Transit Road Southbound June 2021

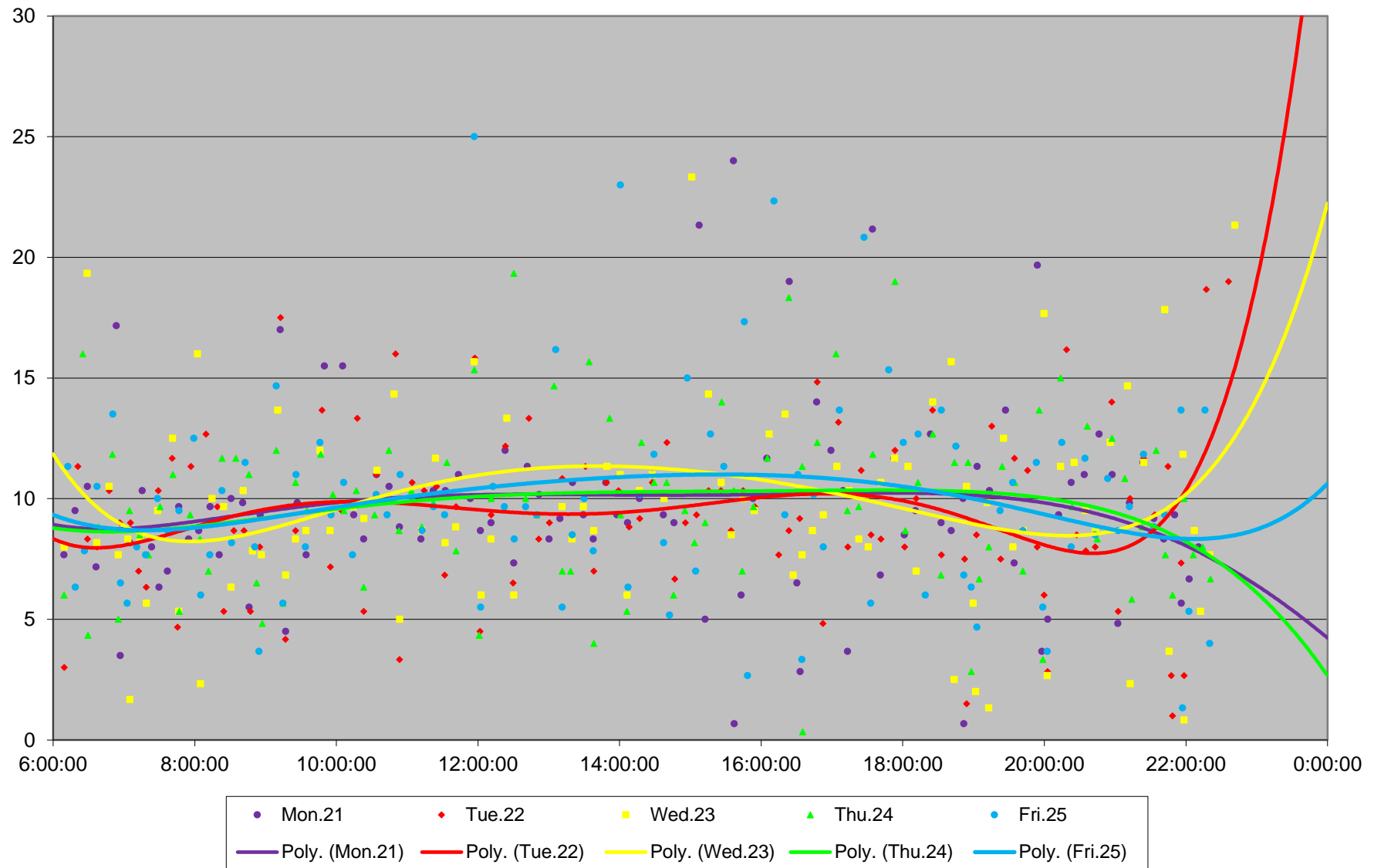


929 Dufferin Express Headways at Transit Road Southbound June 2021

Quartiles Week 3

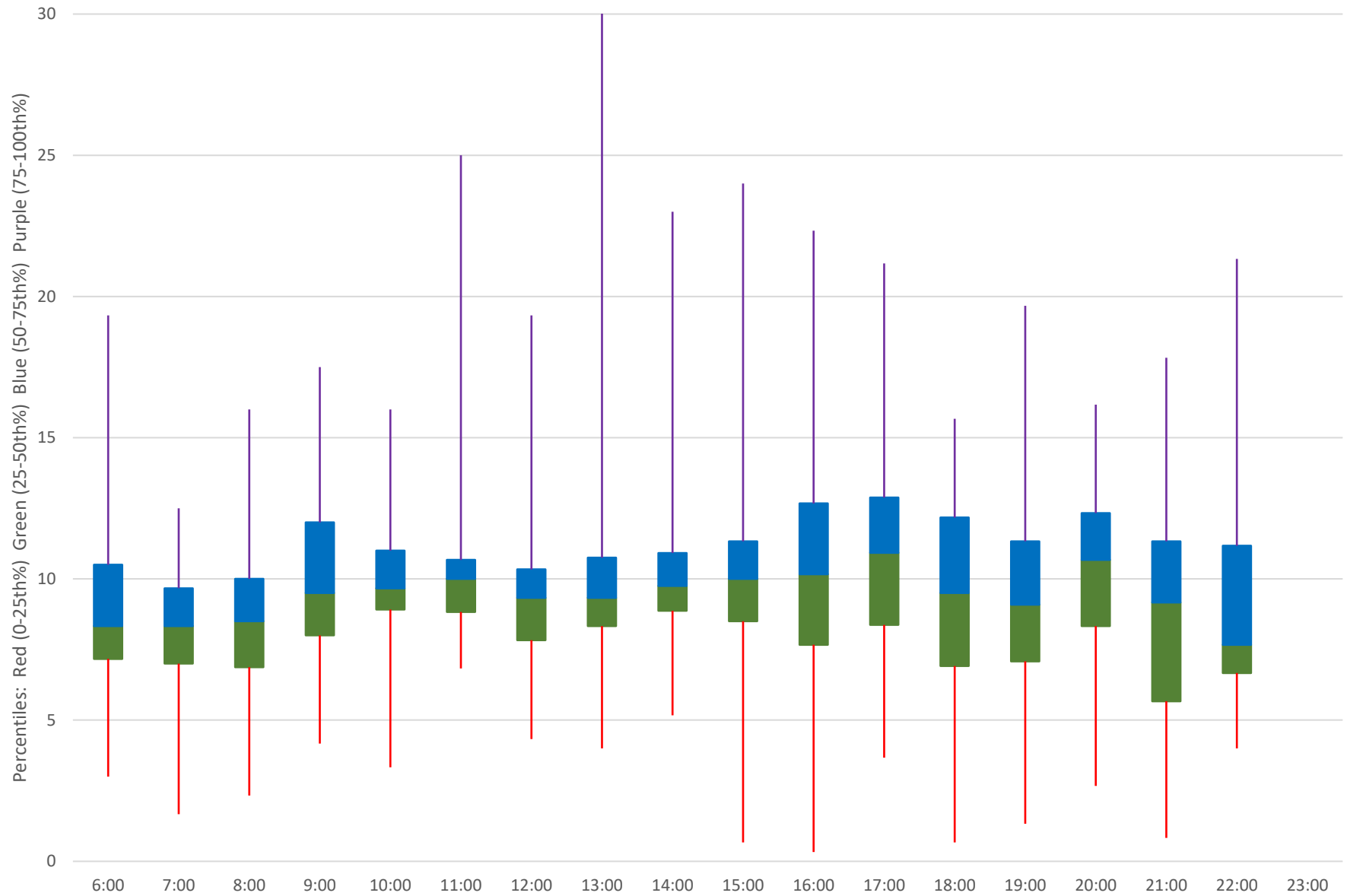


929 Dufferin Express Headways at Transit Road Southbound June 2021

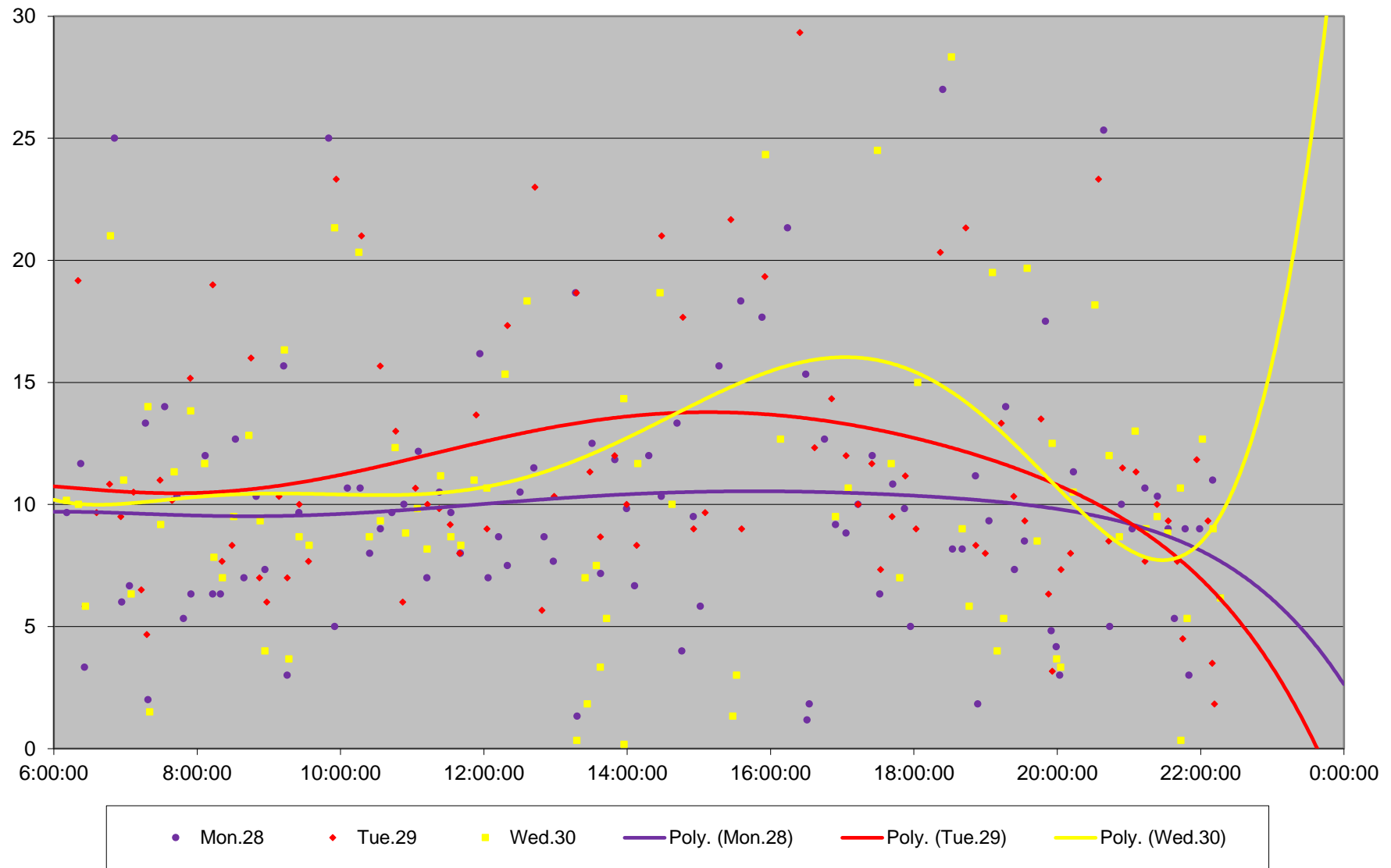


929 Dufferin Express Headways at Transit Road Southbound June 2021

Quartiles Week 4



929 Dufferin Express Headways at Transit Road Southbound June 2021



929 Dufferin Express Headways at Transit Road Southbound June 2021

Quartiles Week 5

