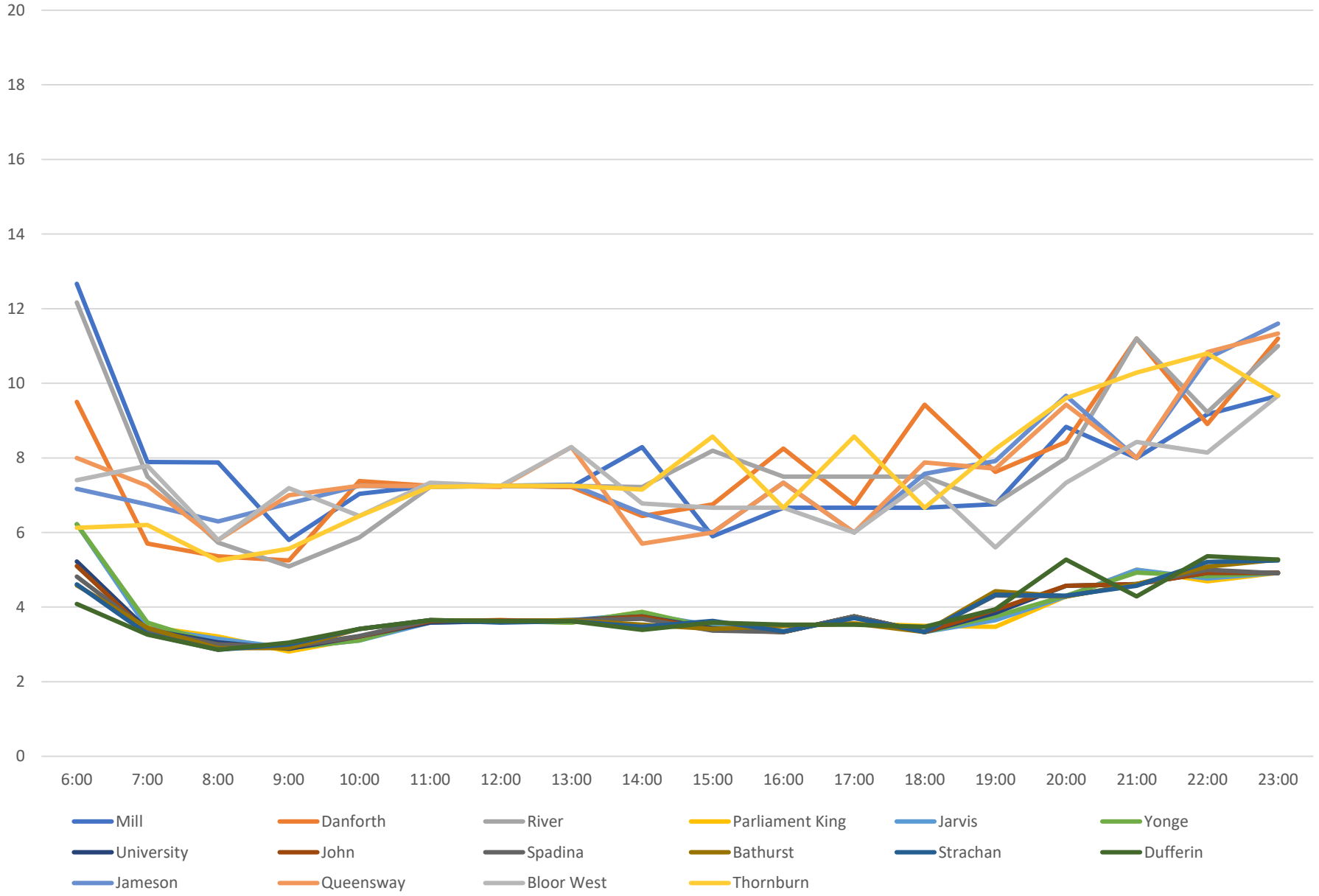
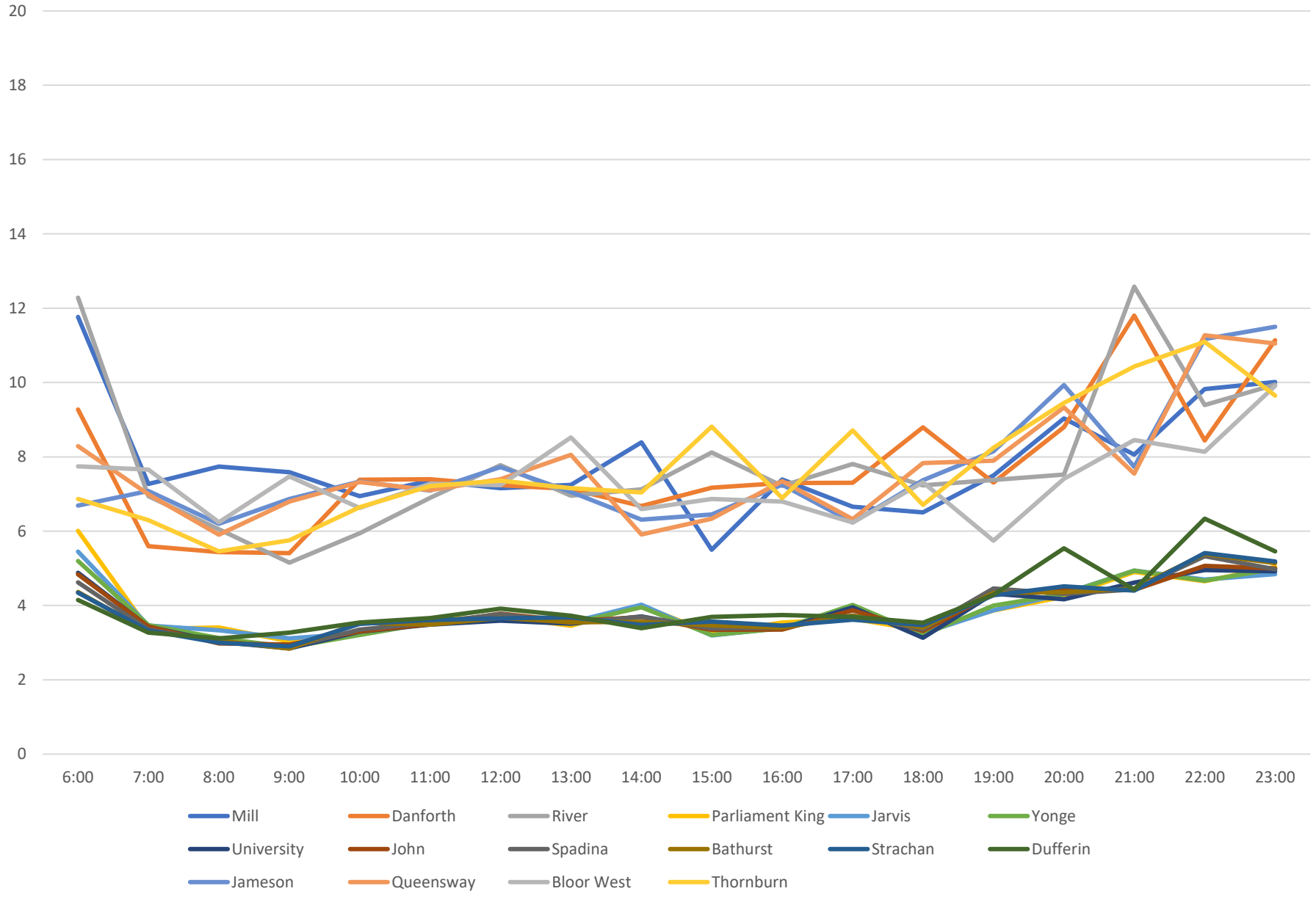


504 King Scheduled Headway Eastbound December 2020 Week 1



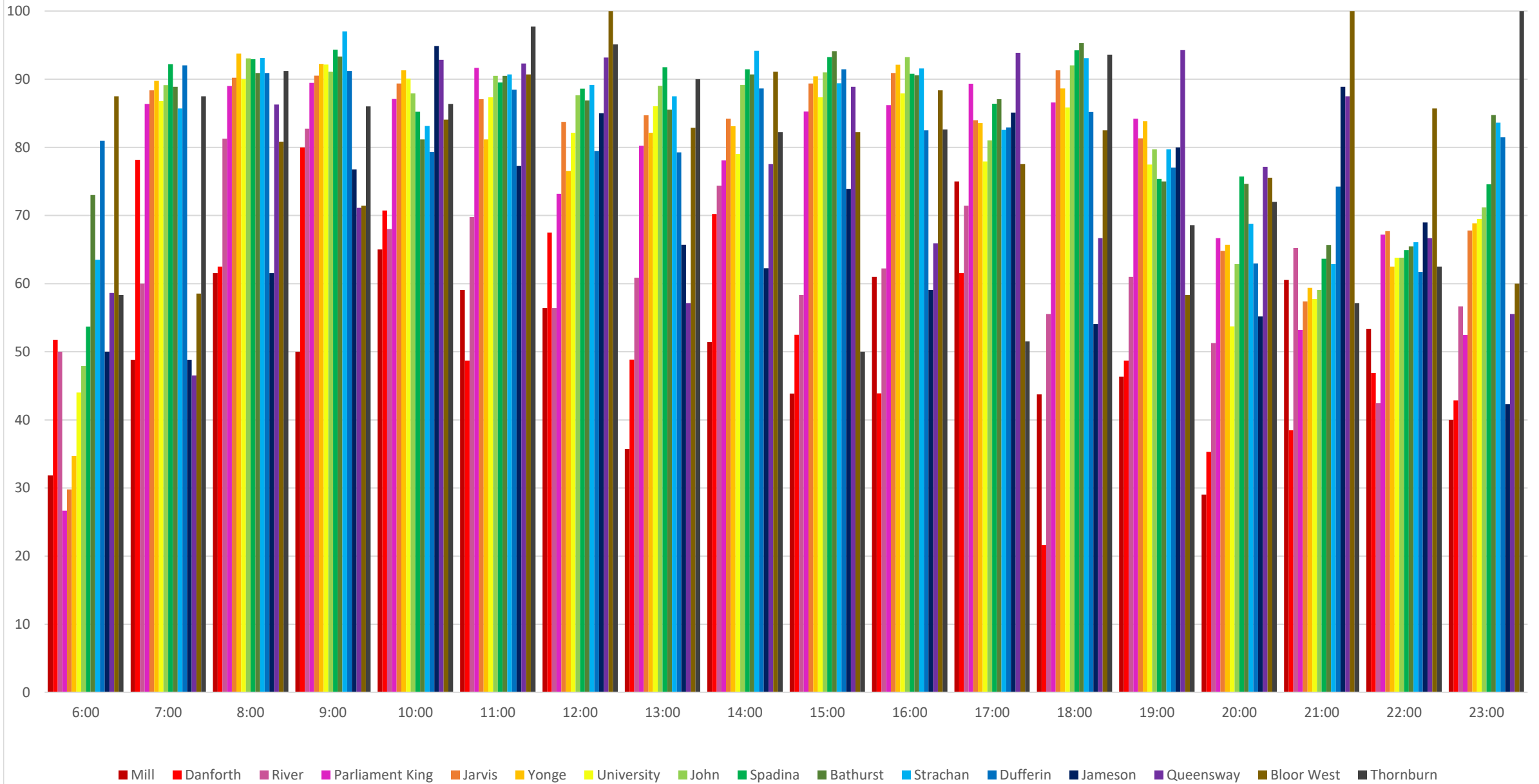
504 King Average Headway Eastbound December 2020 Week 2



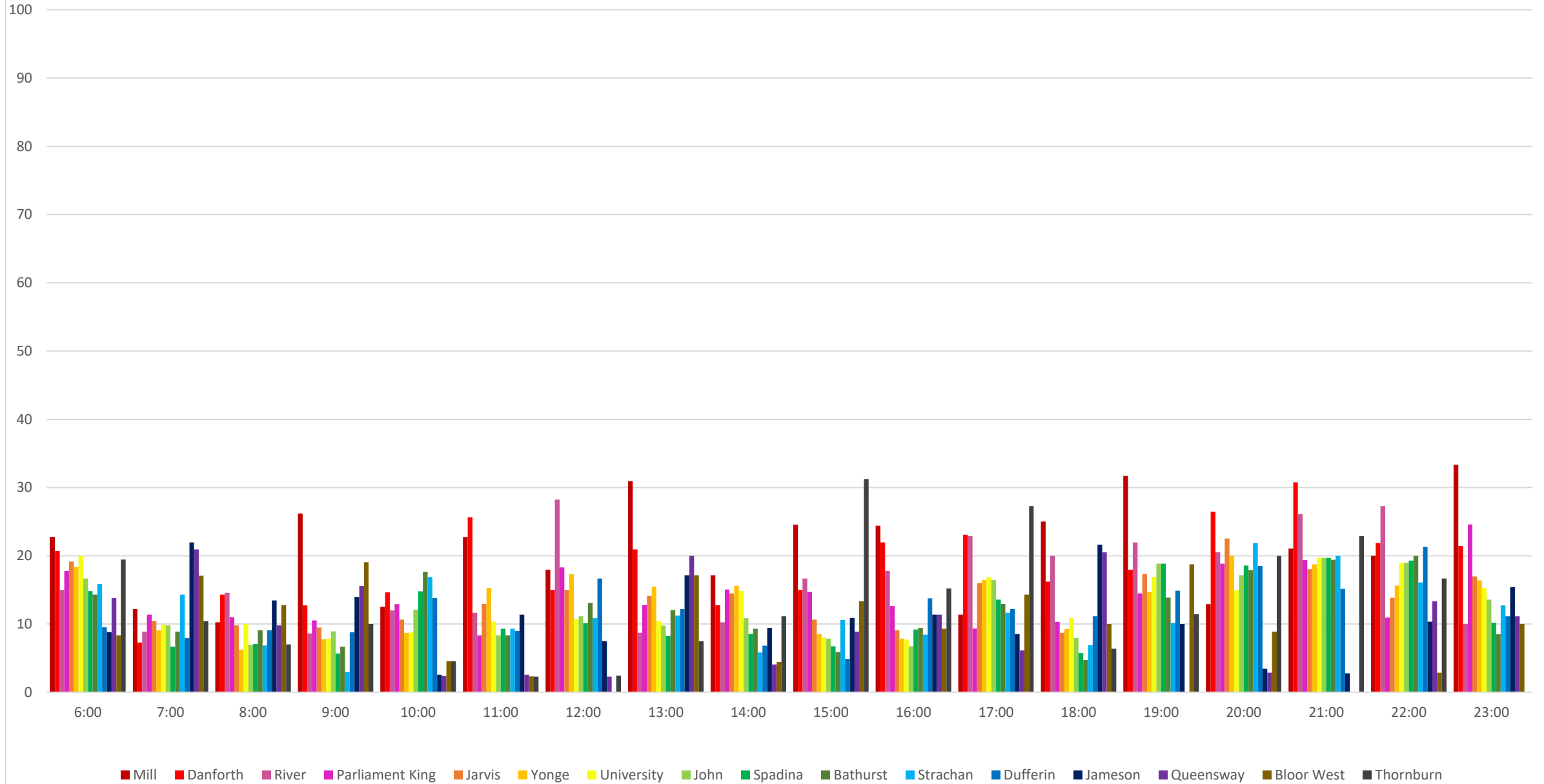




504 King Percent of Headways Within Std Eastbound December 2020 Week 2

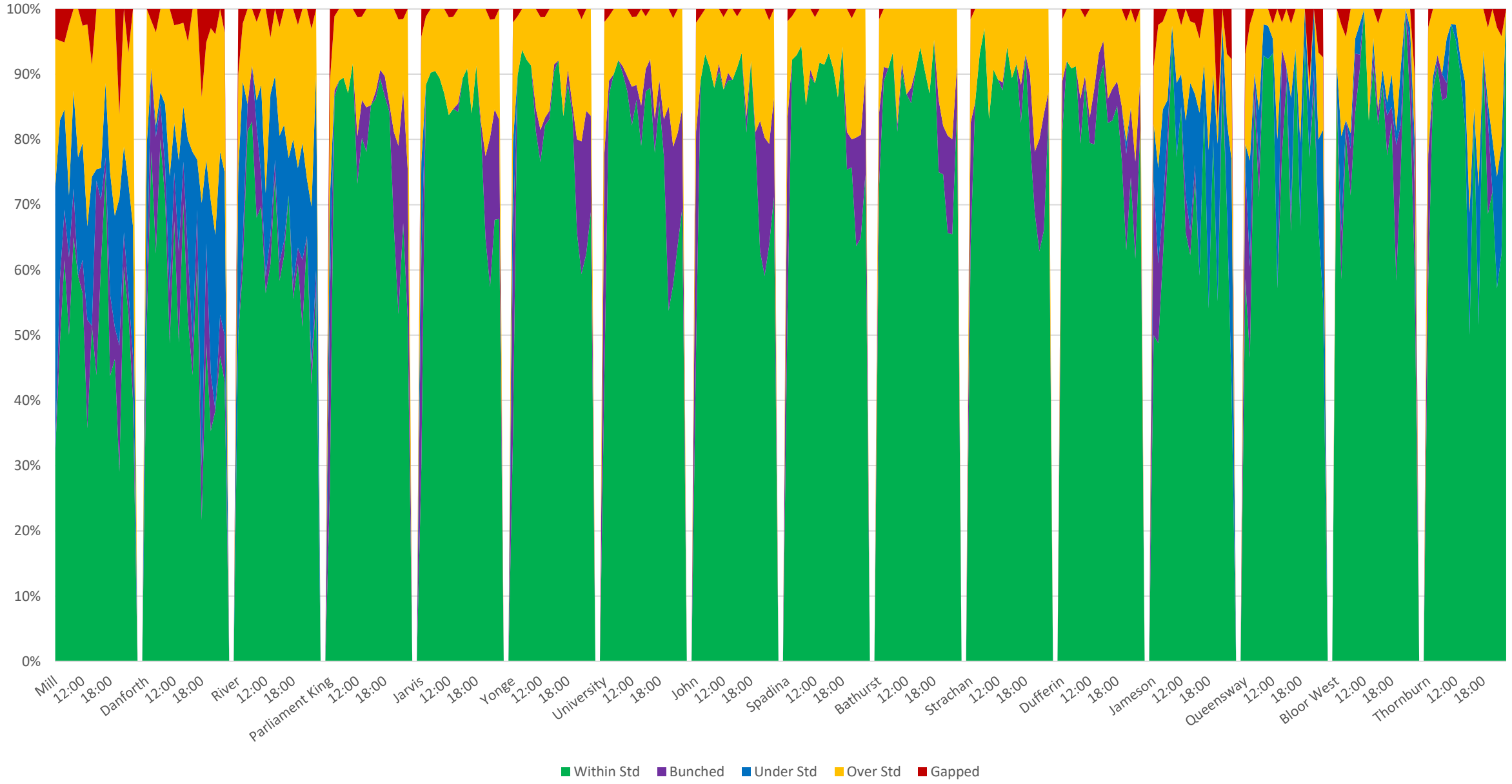


504 King Percent of Headways Over Std Eastbound December 2020 Week 2



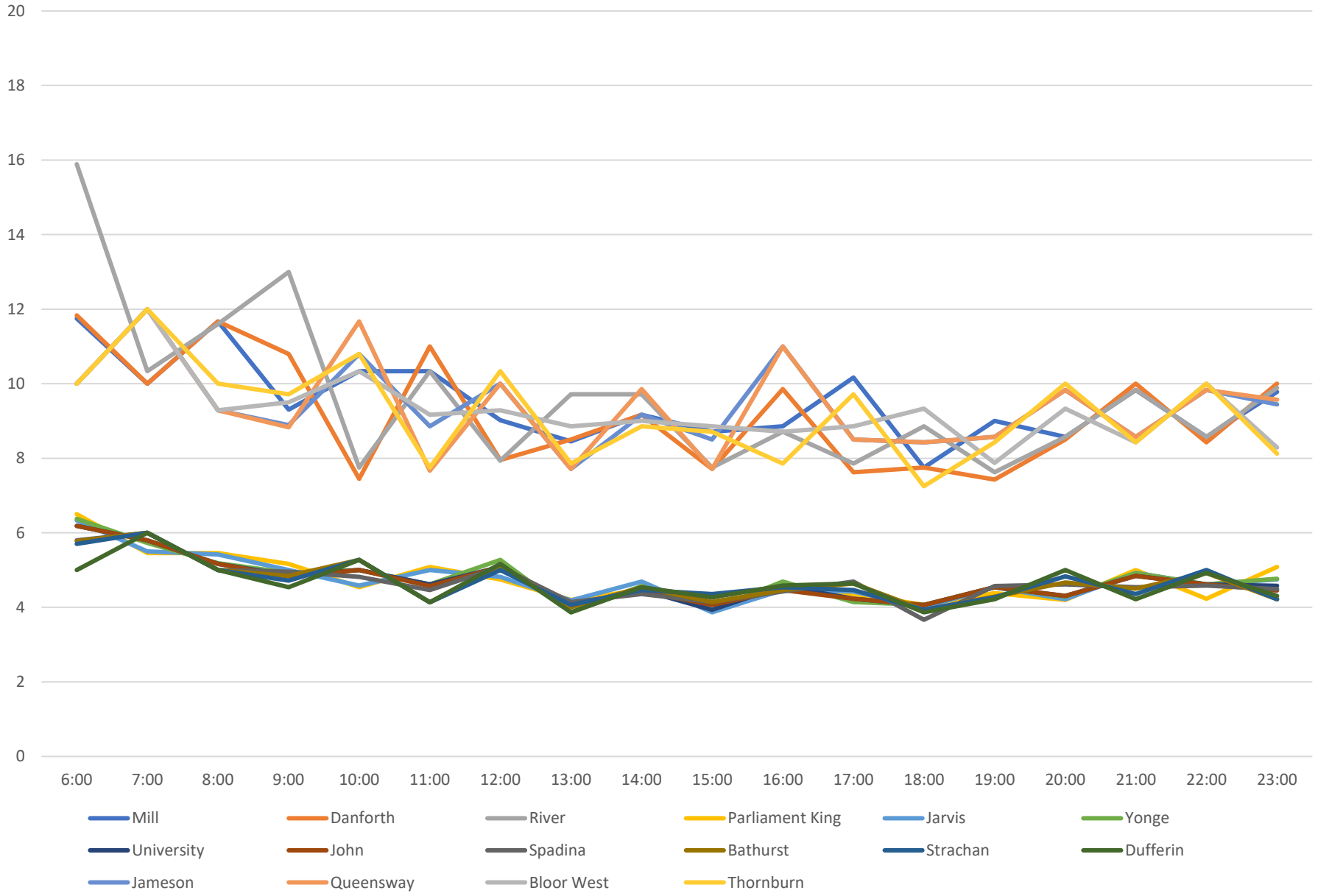


504 King Headway Distribution Eastbound December 2020 Week 2

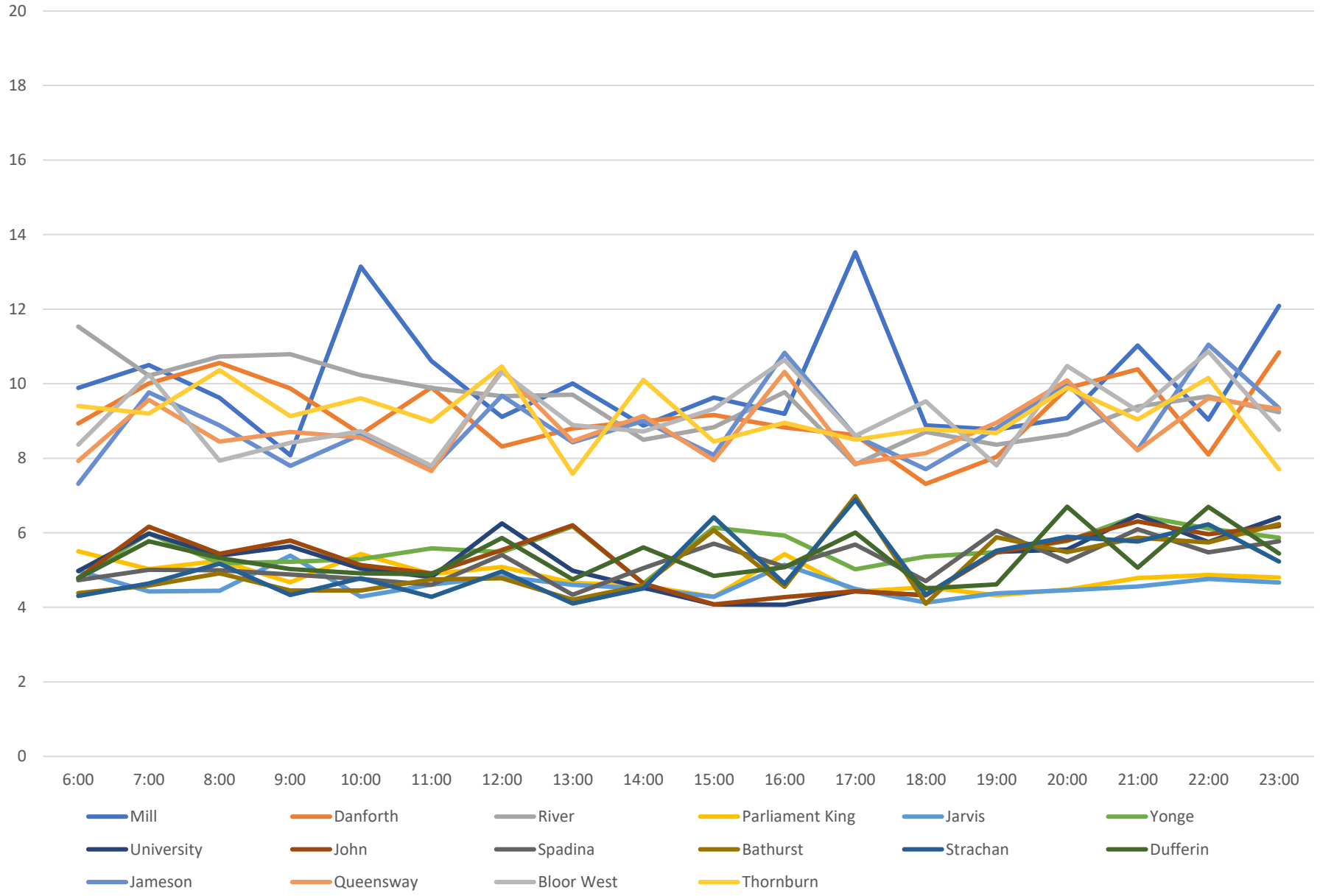




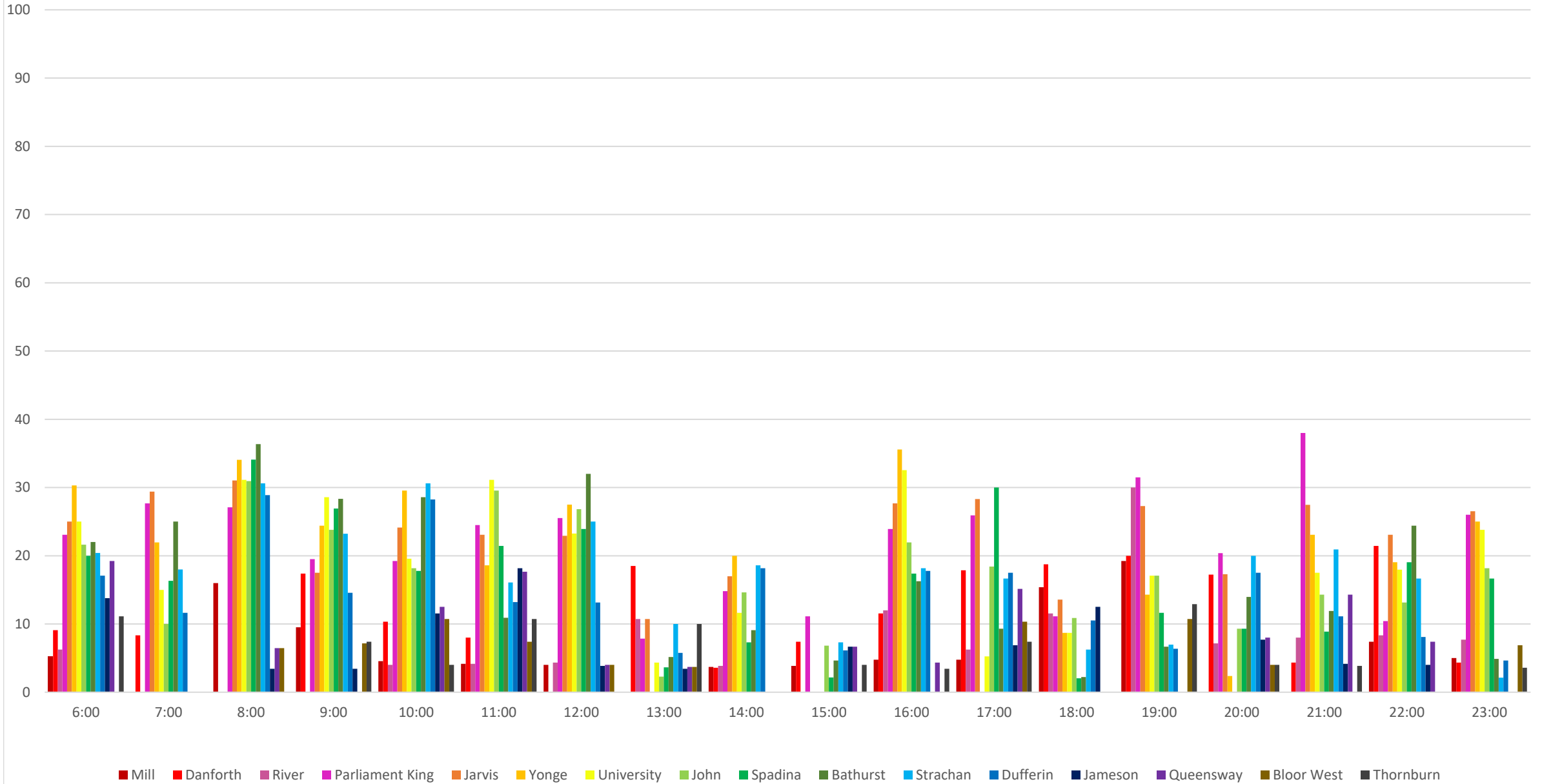
504 King Scheduled Headway Eastbound December 2020 Saturdays



504 King Average Headway Eastbound December 2020 Saturdays

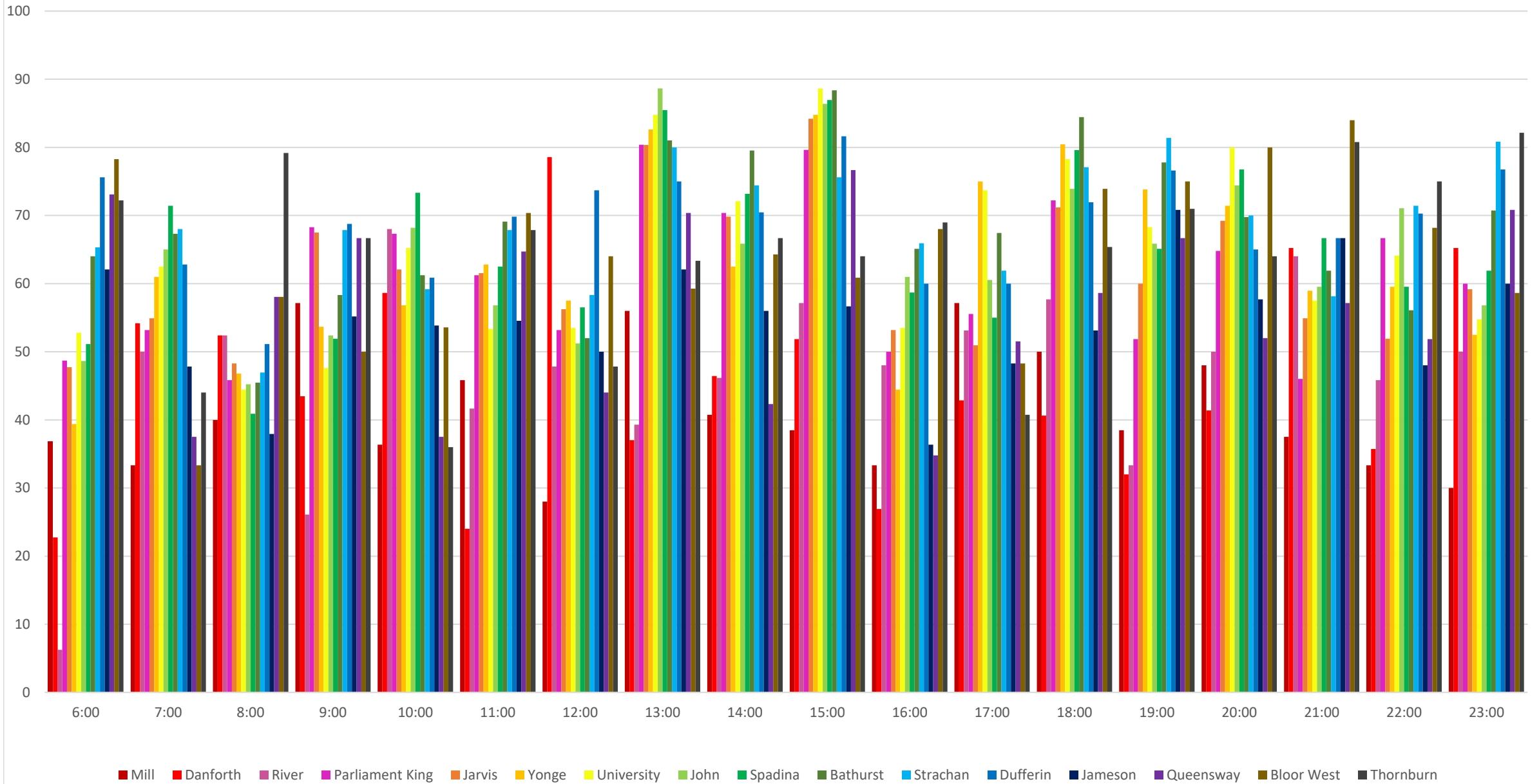


504 King Percent of Headways Bunched Eastbound December 2020 Saturdays

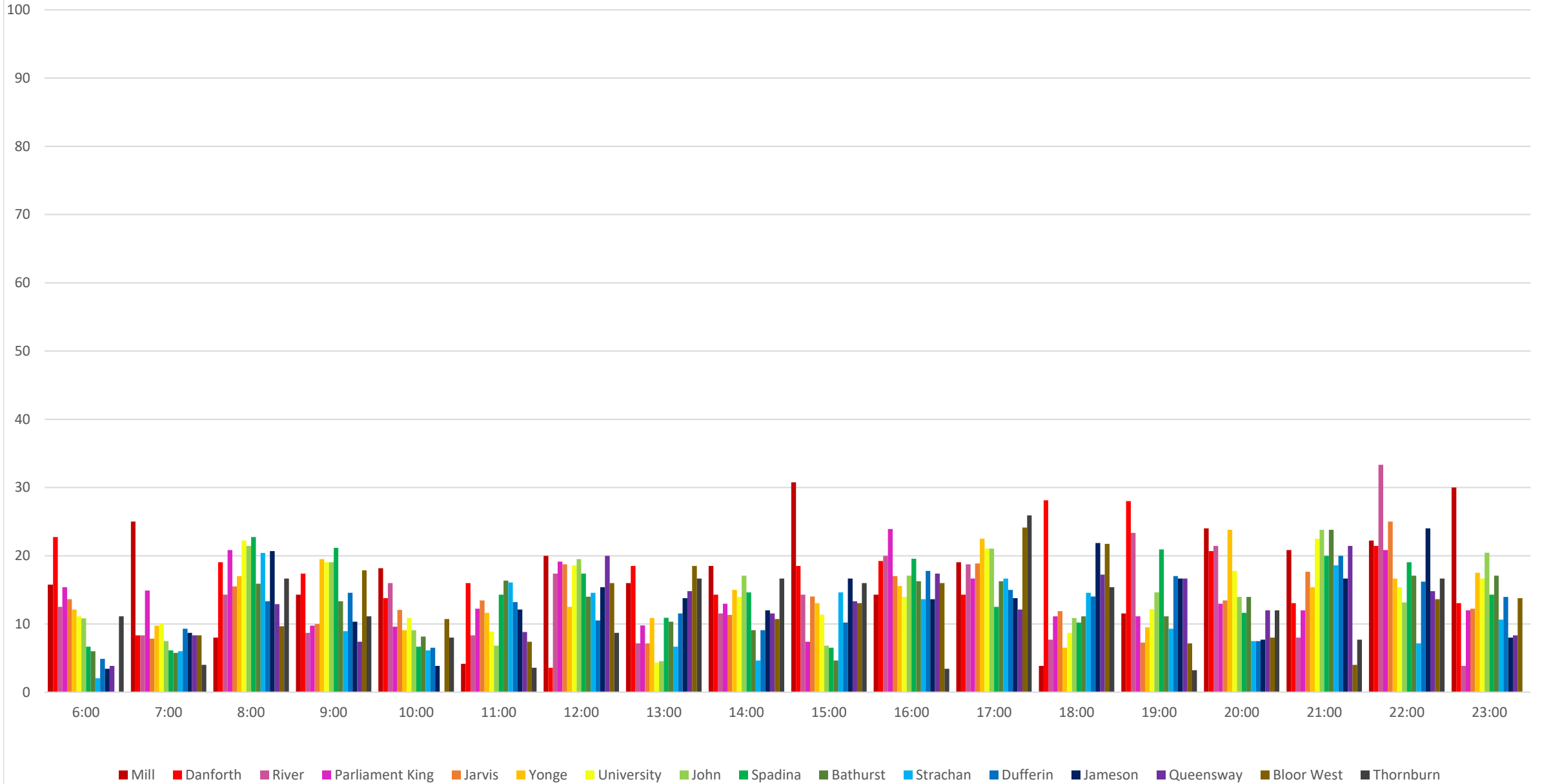




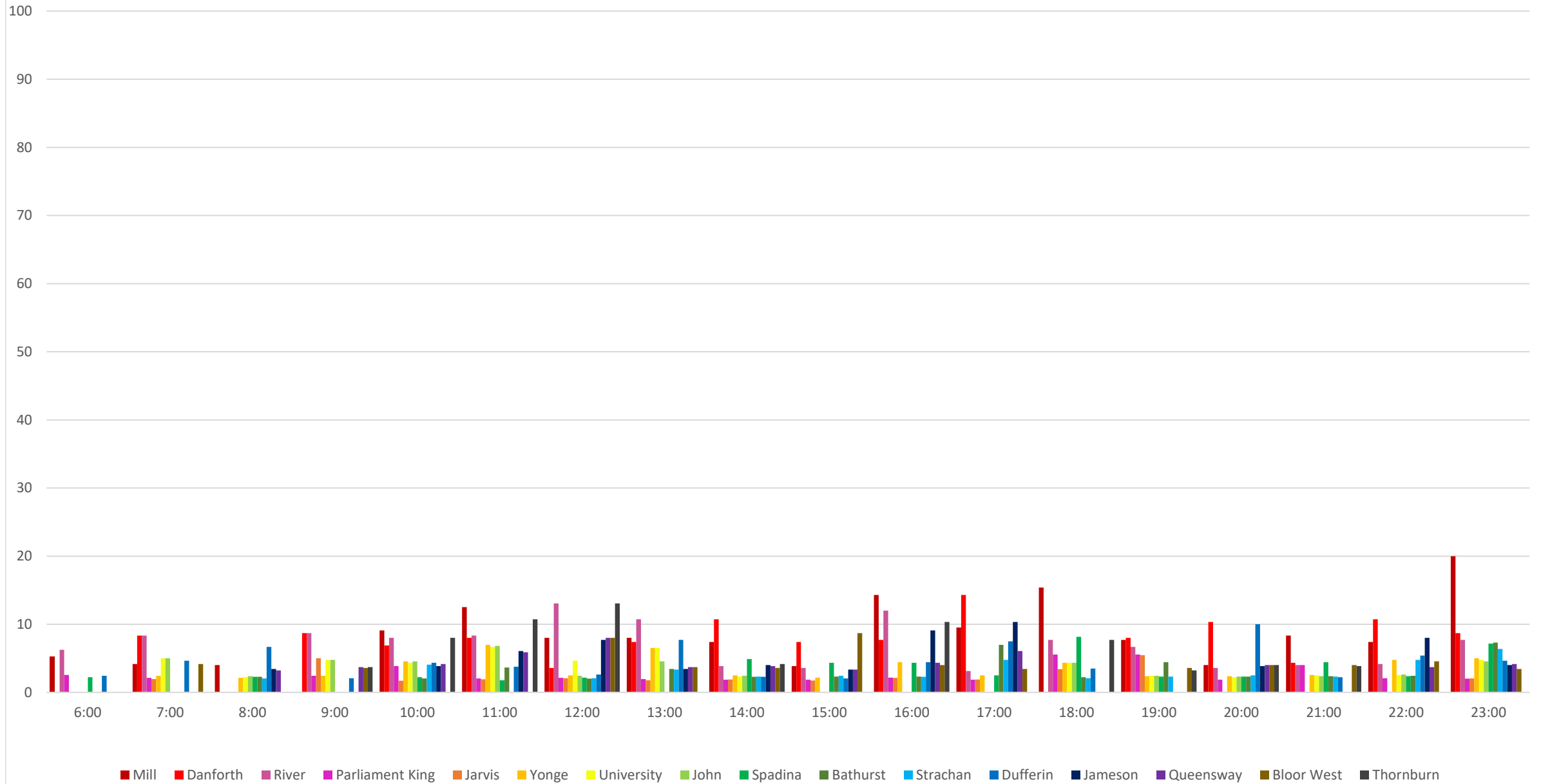
504 King Percent of Headways Within Std Eastbound December 2020 Saturdays



504 King Percent of Headways Over Std Eastbound December 2020 Saturdays



504 King Percent of Headways Gapped Eastbound December 2020 Saturdays

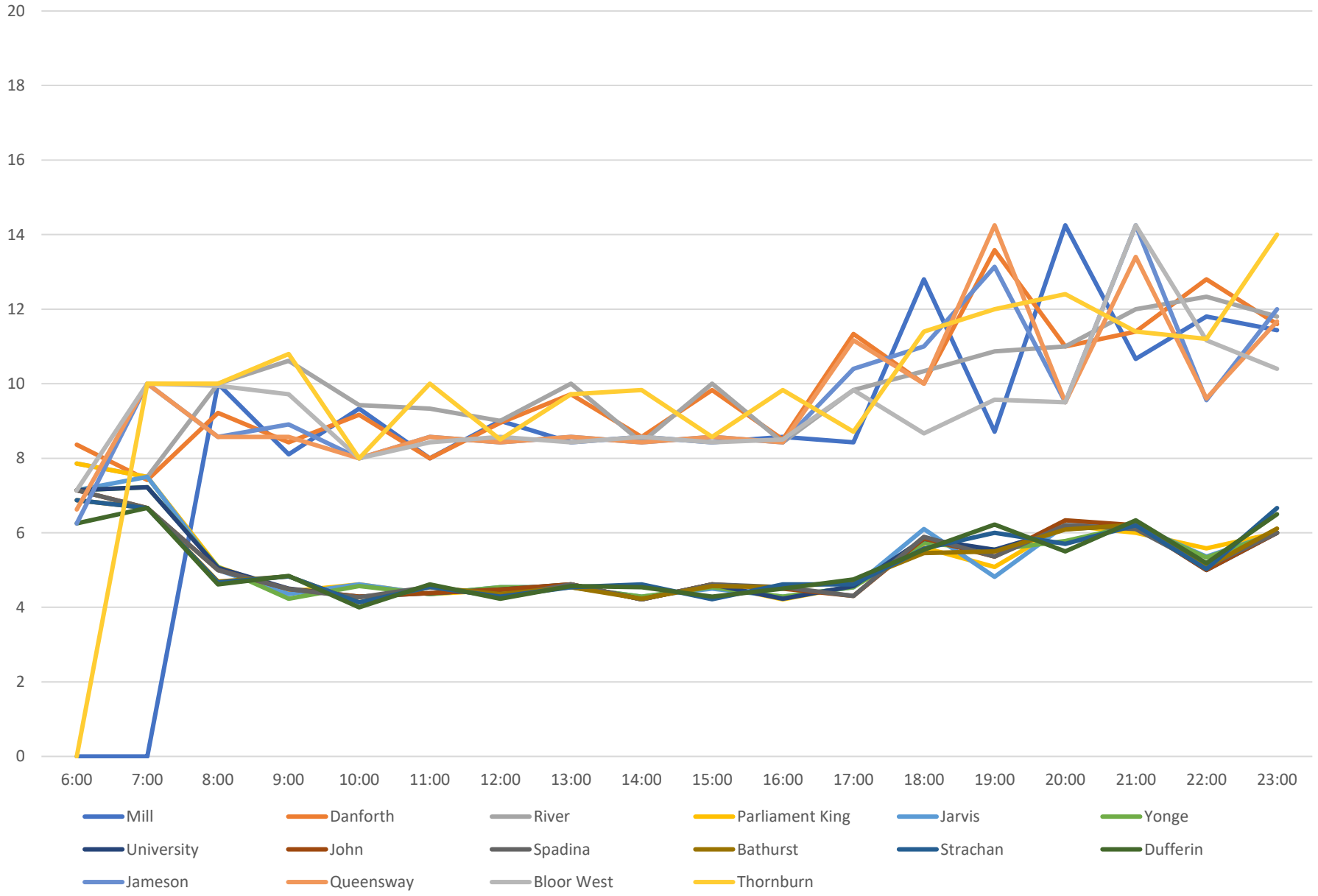


504 King Headway Distribution Eastbound December 2020 Saturdays

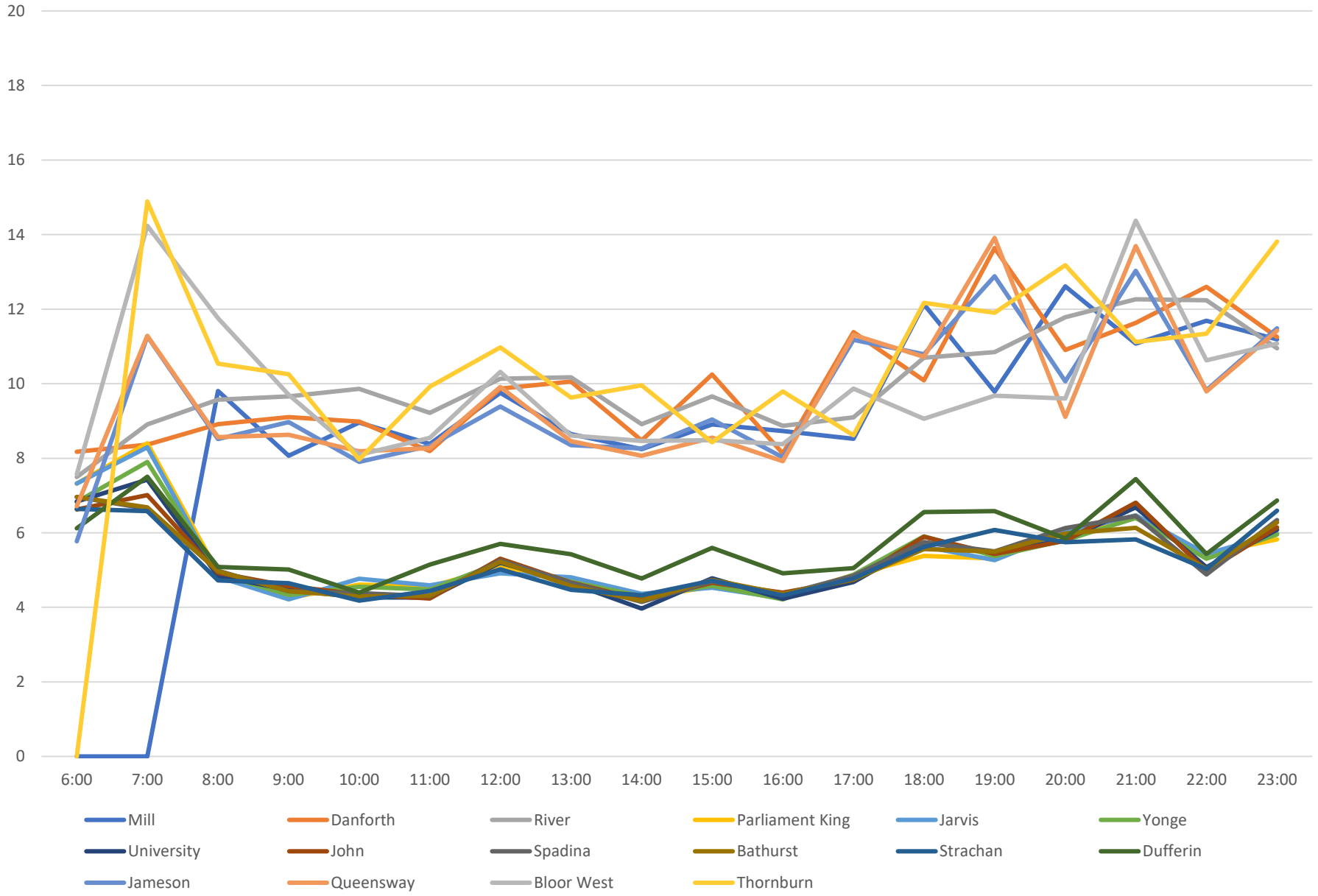




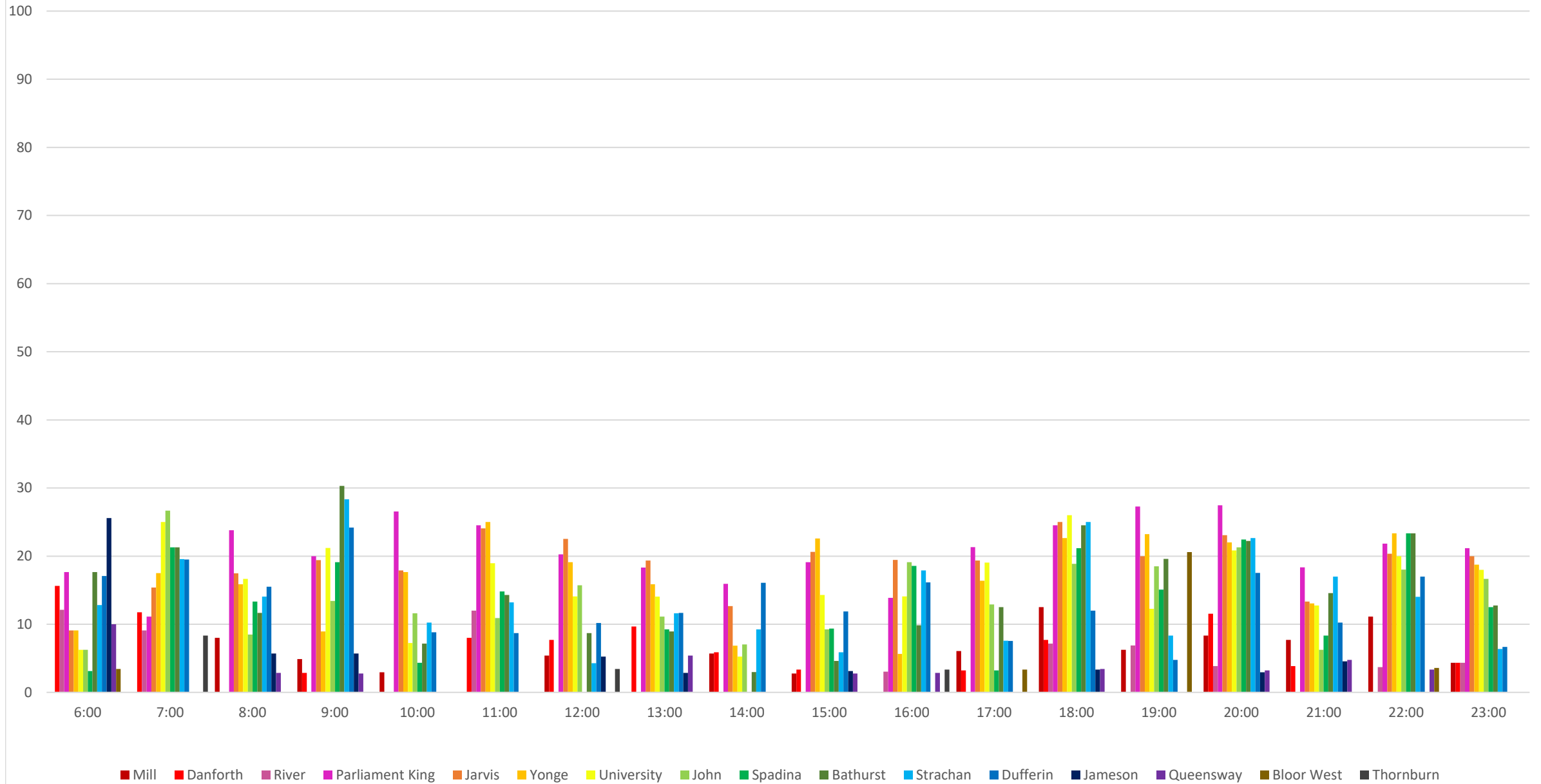
504 King Scheduled Headway Eastbound December 2020 Sundays



504 King Average Headway Eastbound December 2020 Sundays

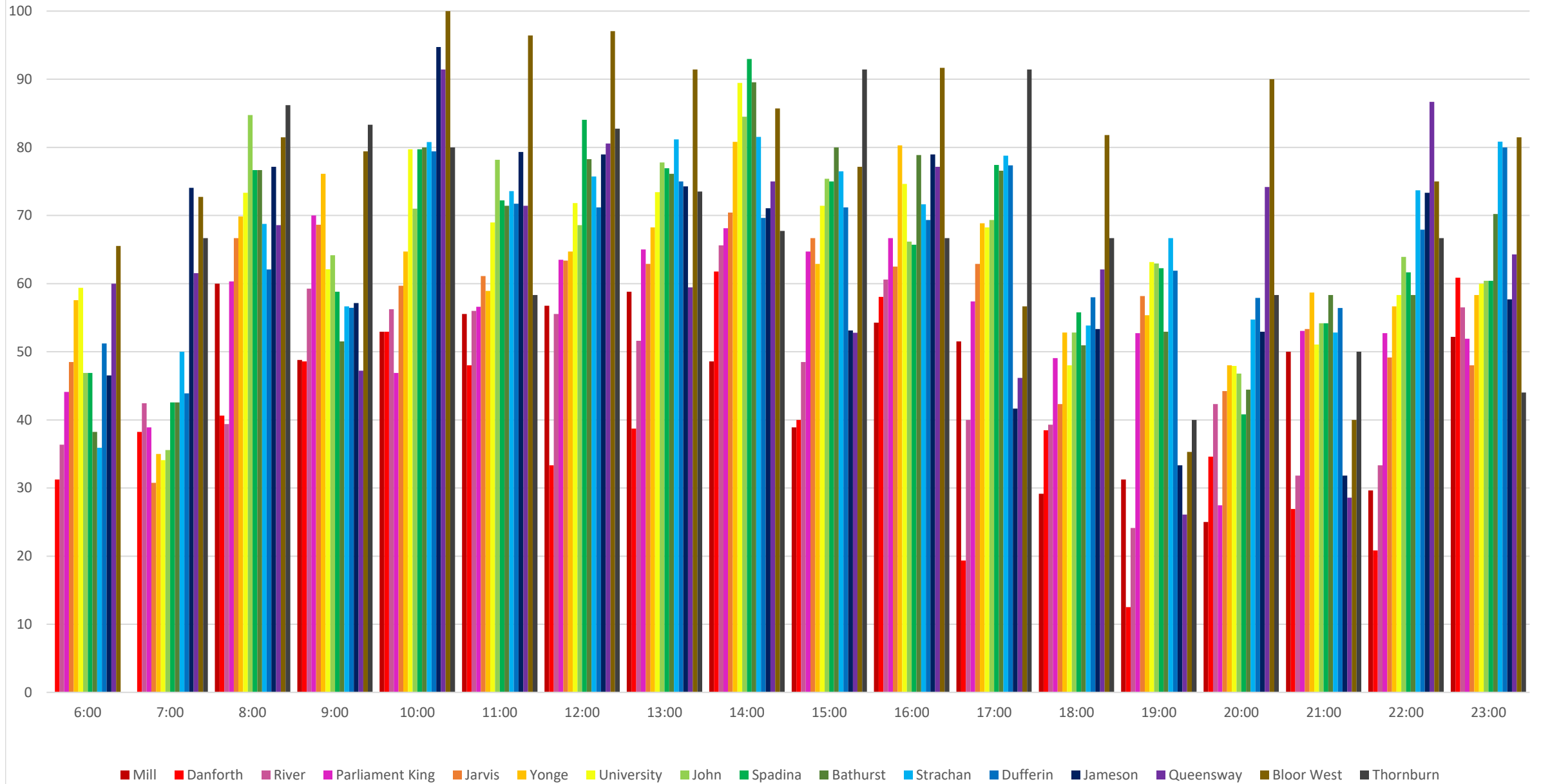


504 King Percent of Headways Bunched Eastbound December 2020 Sundays

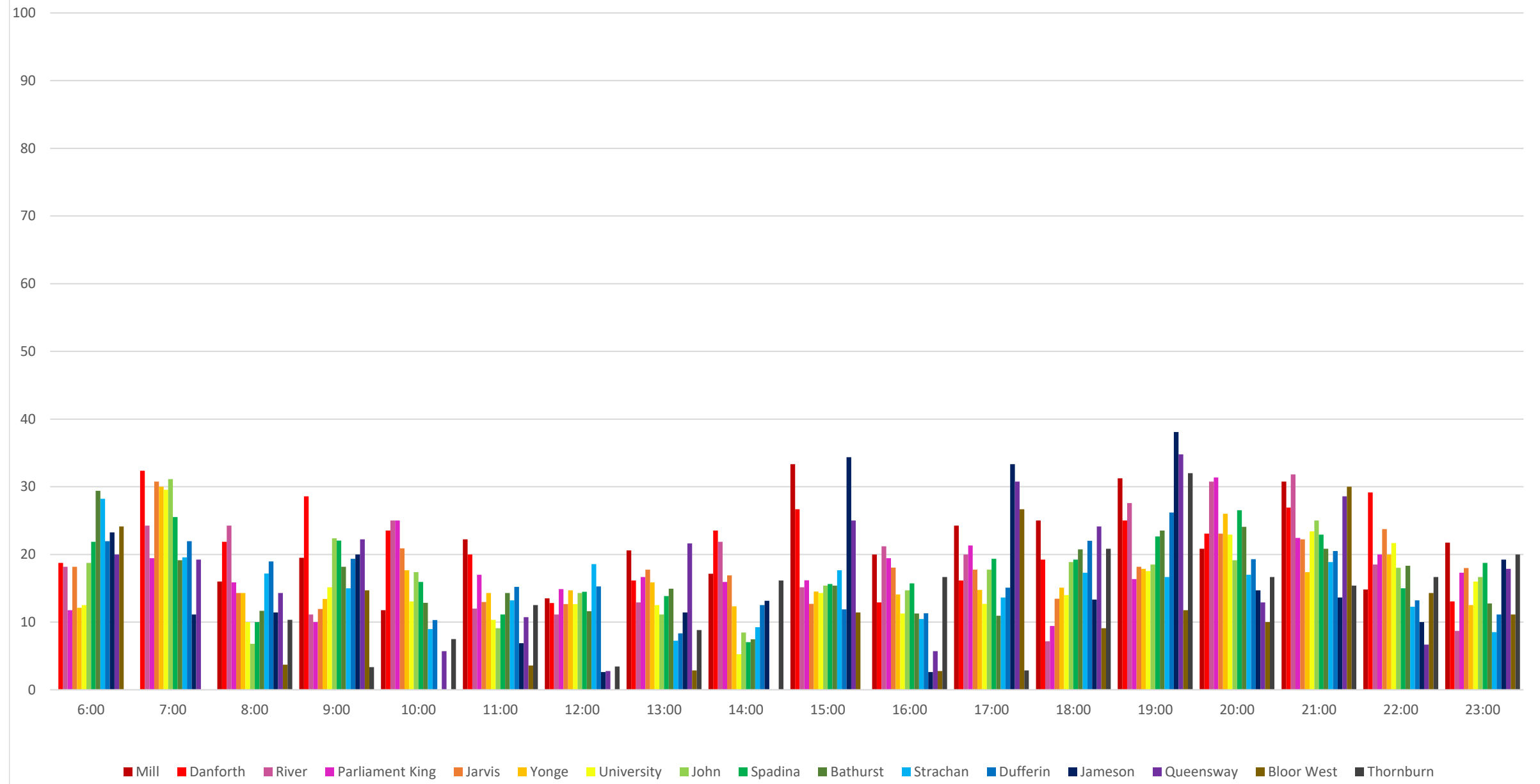




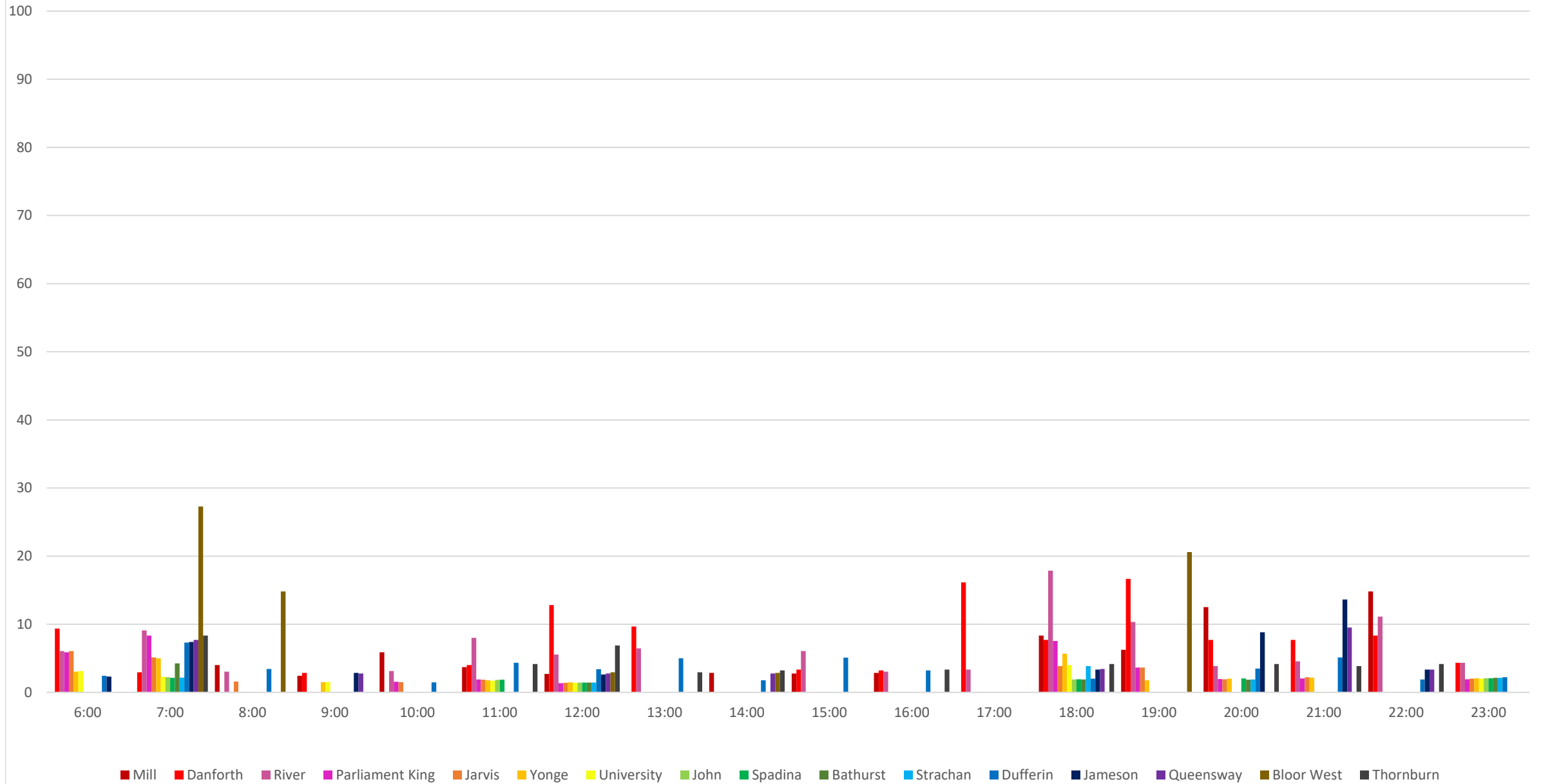
504 King Percent of Headways Within Std Eastbound December 2020 Sundays



504 King Percent of Headways Over Std Eastbound December 2020 Sundays



504 King Percent of Headways Gapped Eastbound December 2020 Sundays



504 King Headway Distribution Eastbound December 2020 Sundays

