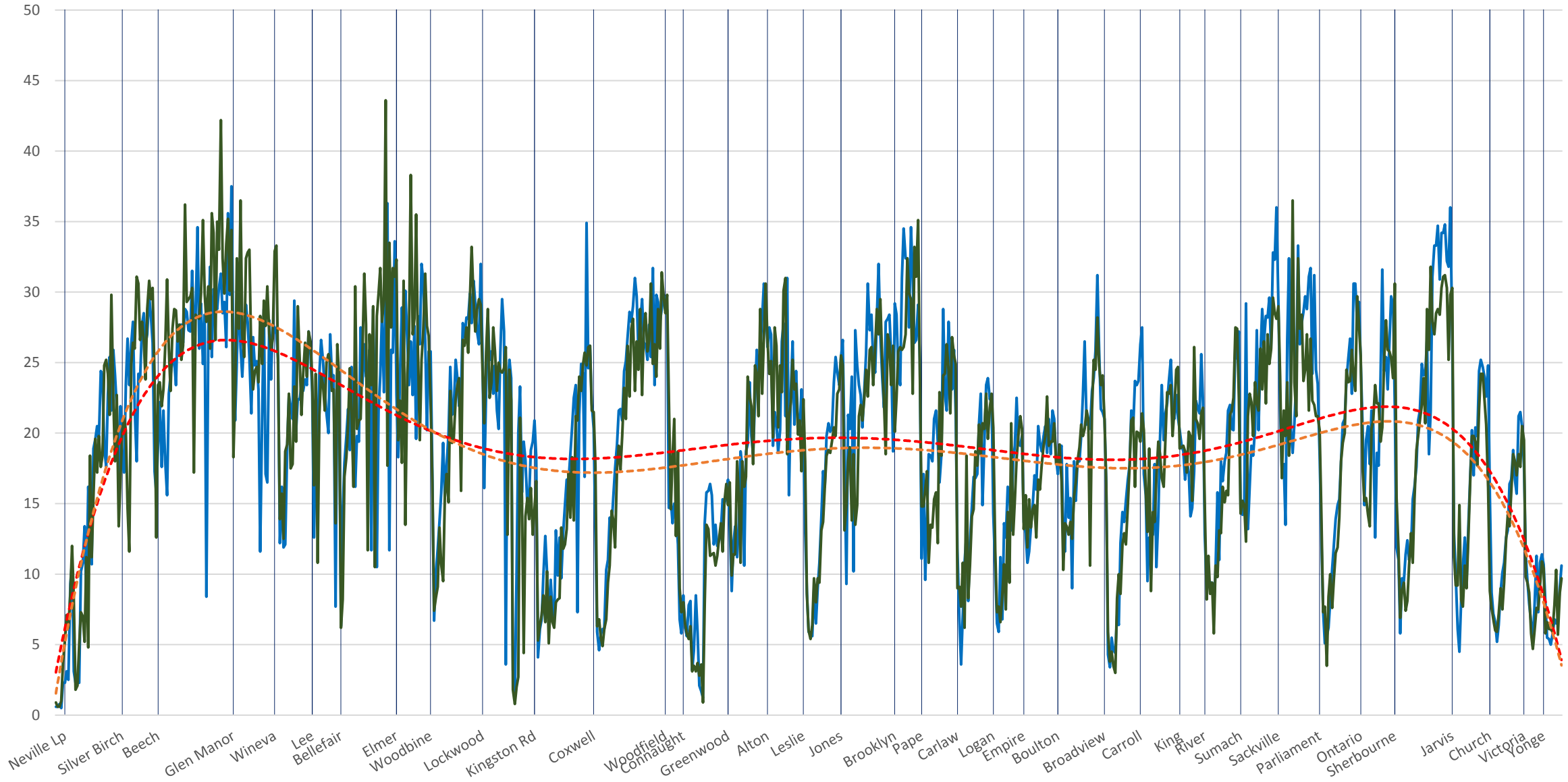
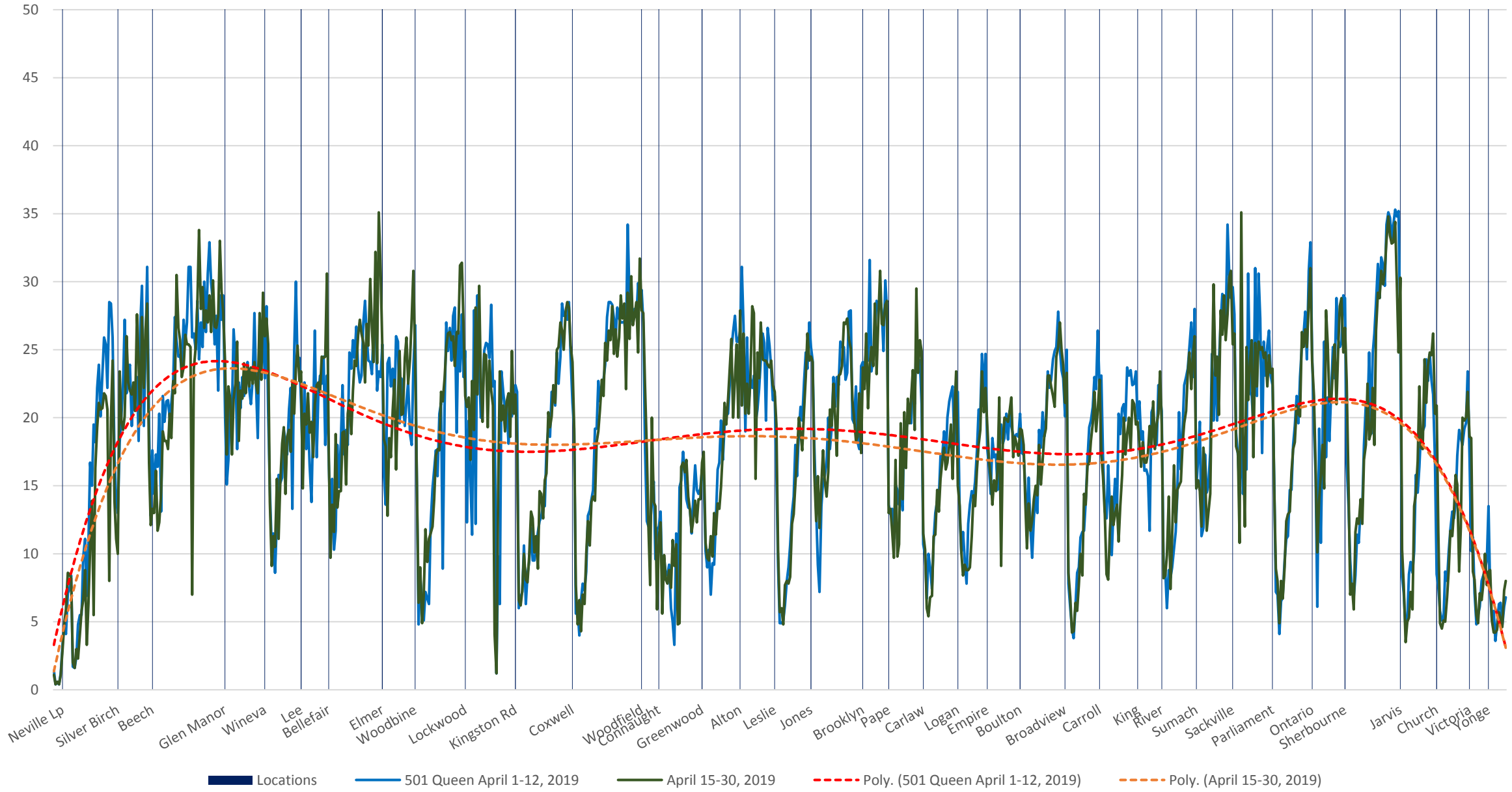


501 Queen April 1-12, 2019 (Blue) vs April 15-30, 2019 (Green) Eastbound Average Speed 600 to 700

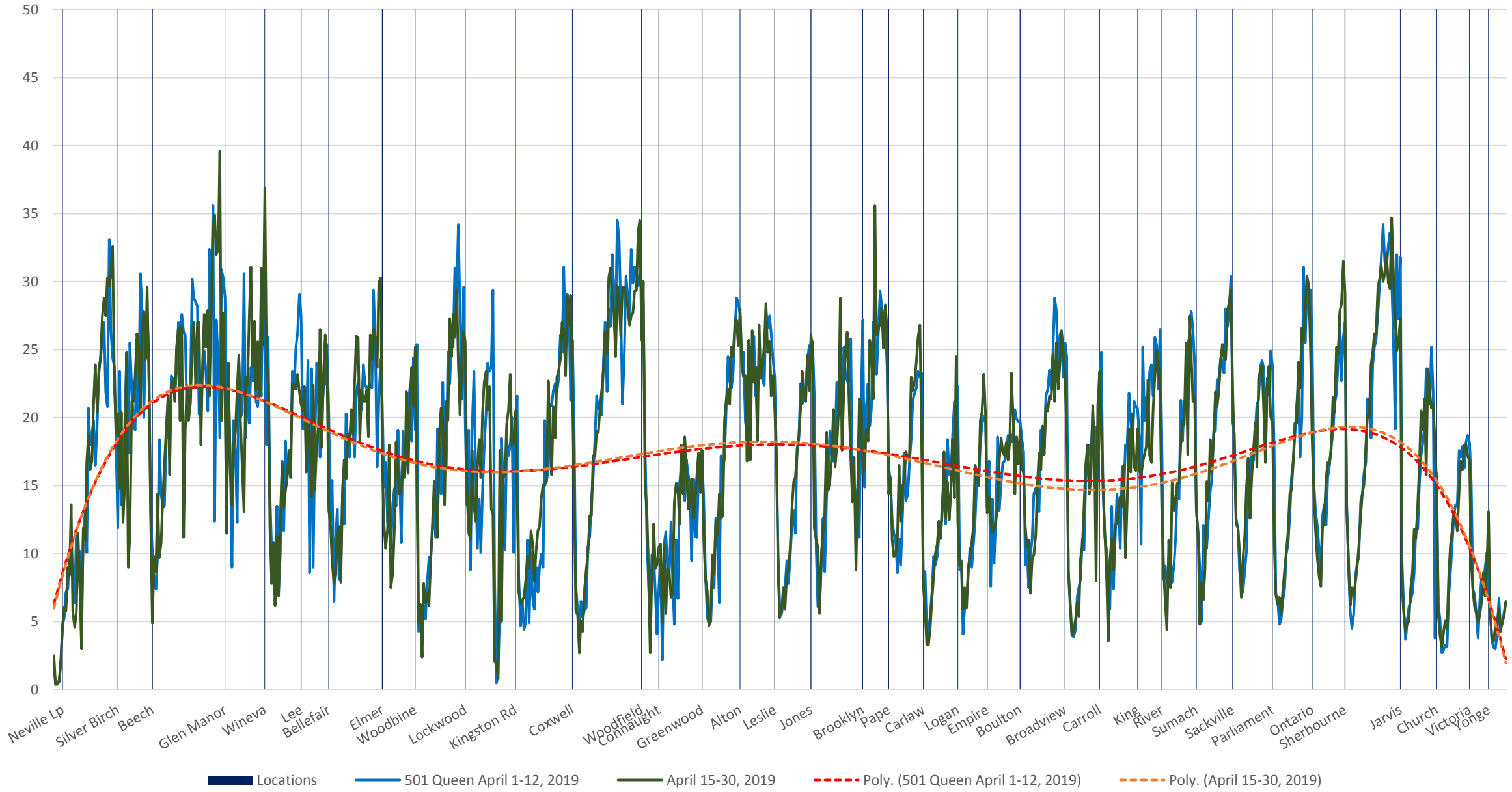


Locations 501 Queen April 1-12, 2019 April 15-30, 2019 Poly. (501 Queen April 1-12, 2019) Poly. (April 15-30, 2019)

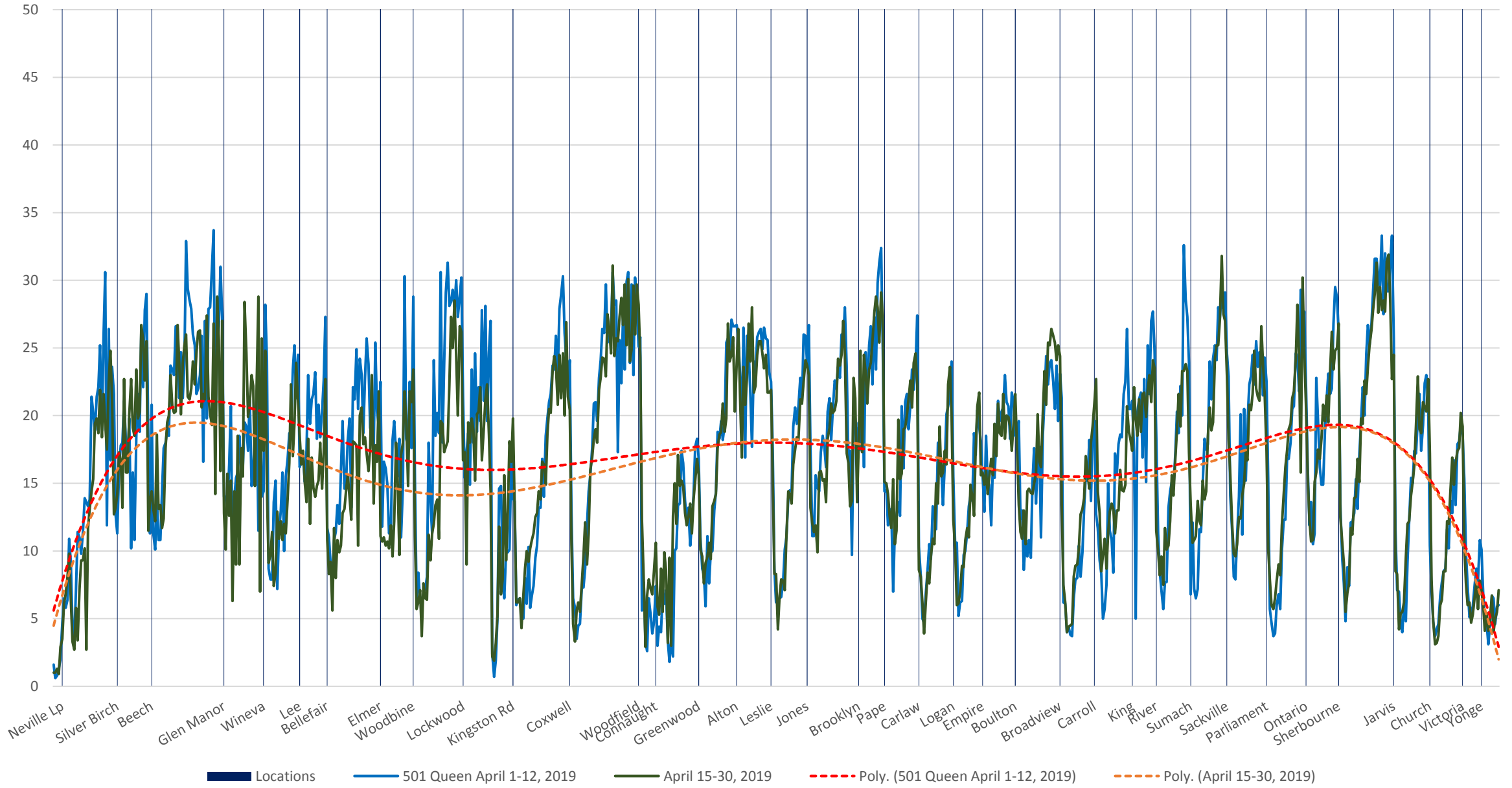
501 Queen April 1-12, 2019 (Blue) vs April 15-30, 2019 (Green) Eastbound Average Speed 700 to 800



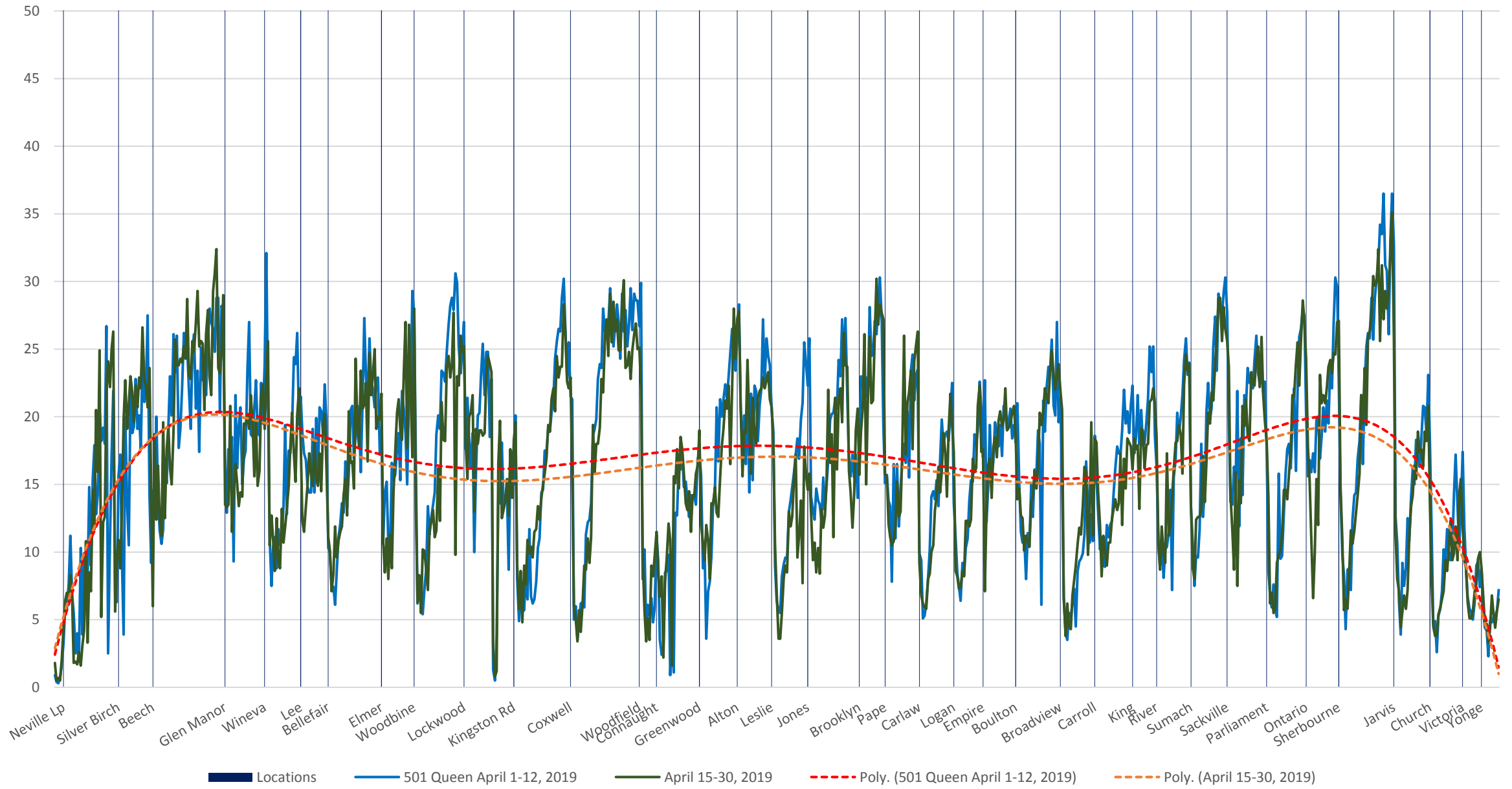
501 Queen April 1-12, 2019 (Blue) vs April 15-30, 2019 (Green) Eastbound Average Speed 800 to 900



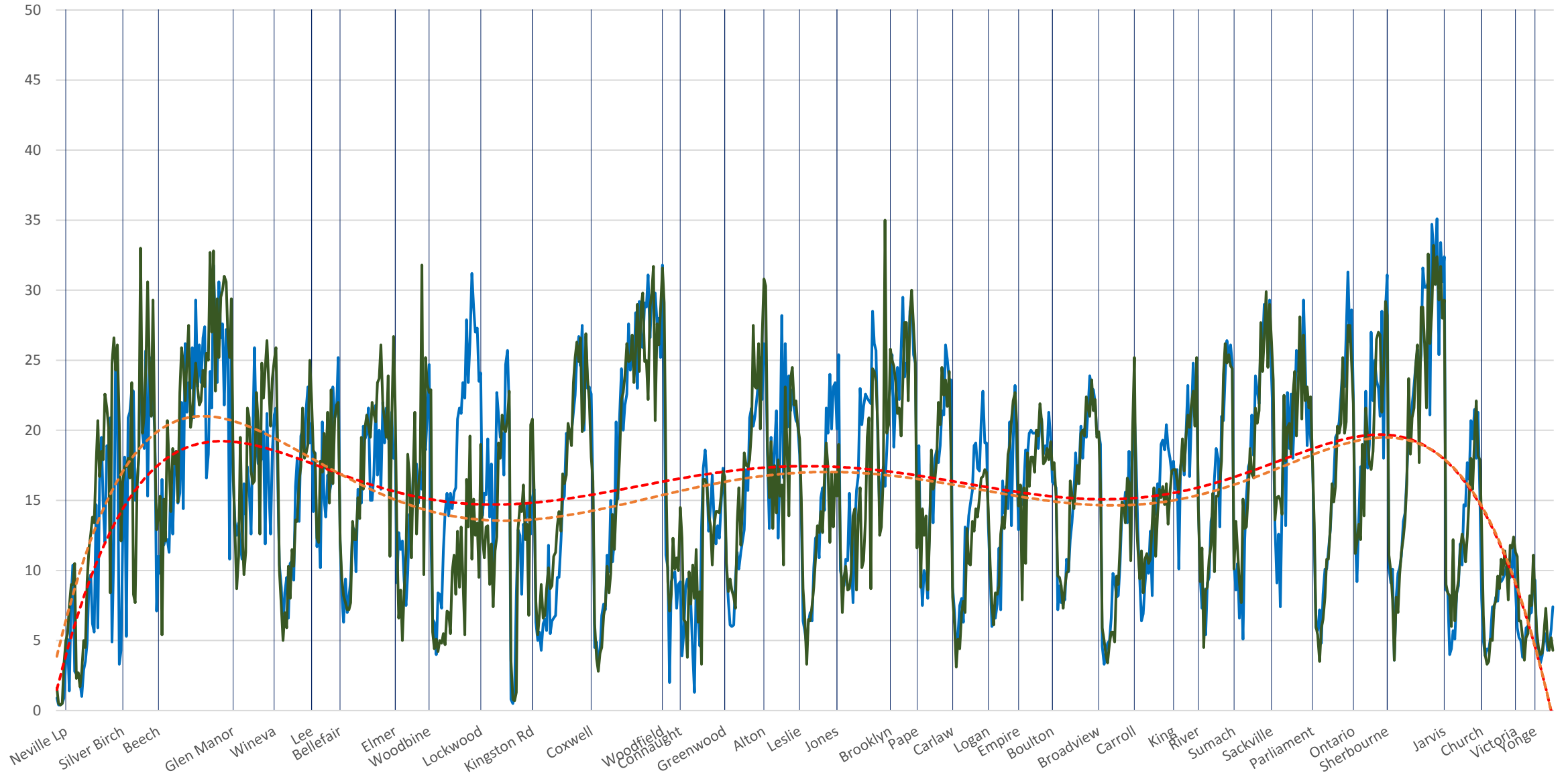
501 Queen April 1-12, 2019 (Blue) vs April 15-30, 2019 (Green) Eastbound Average Speed 900 to 1000



501 Queen April 1-12, 2019 (Blue) vs April 15-30, 2019 (Green) Eastbound Average Speed 1000 to 1100

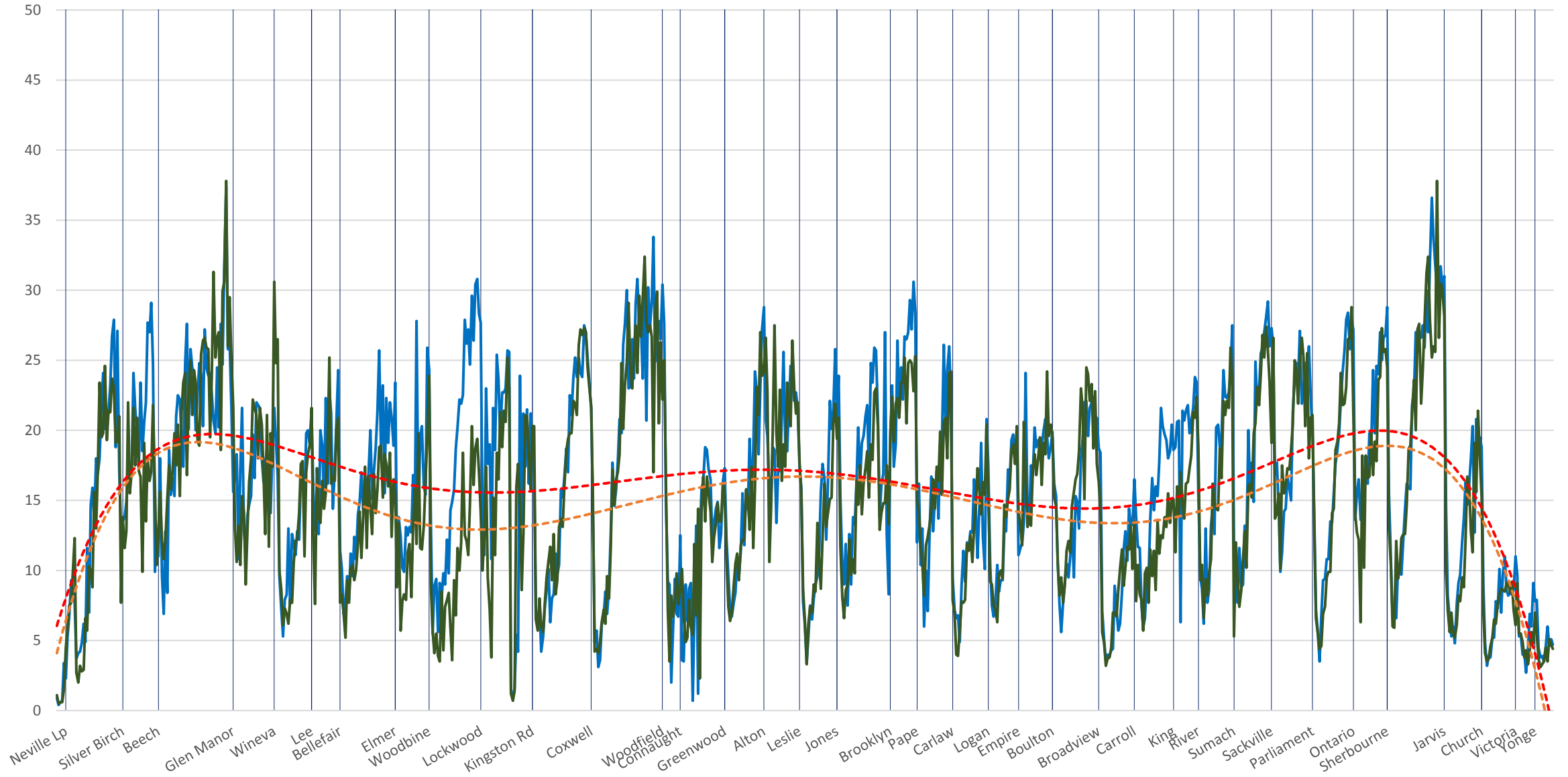


501 Queen April 1-12, 2019 (Blue) vs April 15-30, 2019 (Green) Eastbound Average Speed 1100 to 1200



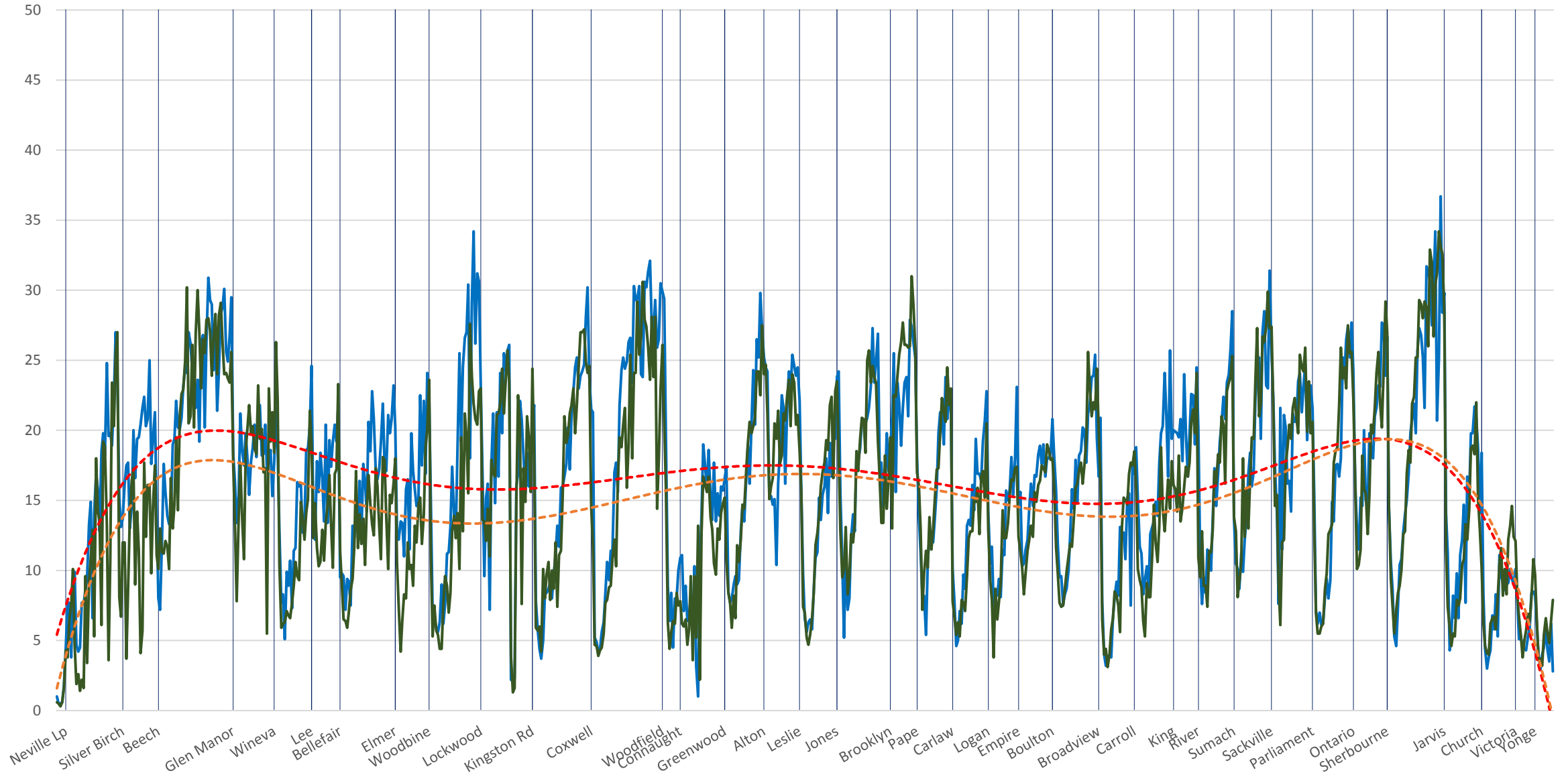
Locations 501 Queen April 1-12, 2019 April 15-30, 2019 Poly. (501 Queen April 1-12, 2019) Poly. (April 15-30, 2019)

501 Queen April 1-12, 2019 (Blue) vs April 15-30, 2019 (Green) Eastbound Average Speed 1200 to 1300



■ Locations    — 501 Queen April 1-12, 2019    — April 15-30, 2019    - - - Poly. (501 Queen April 1-12, 2019)    - - - Poly. (April 15-30, 2019)

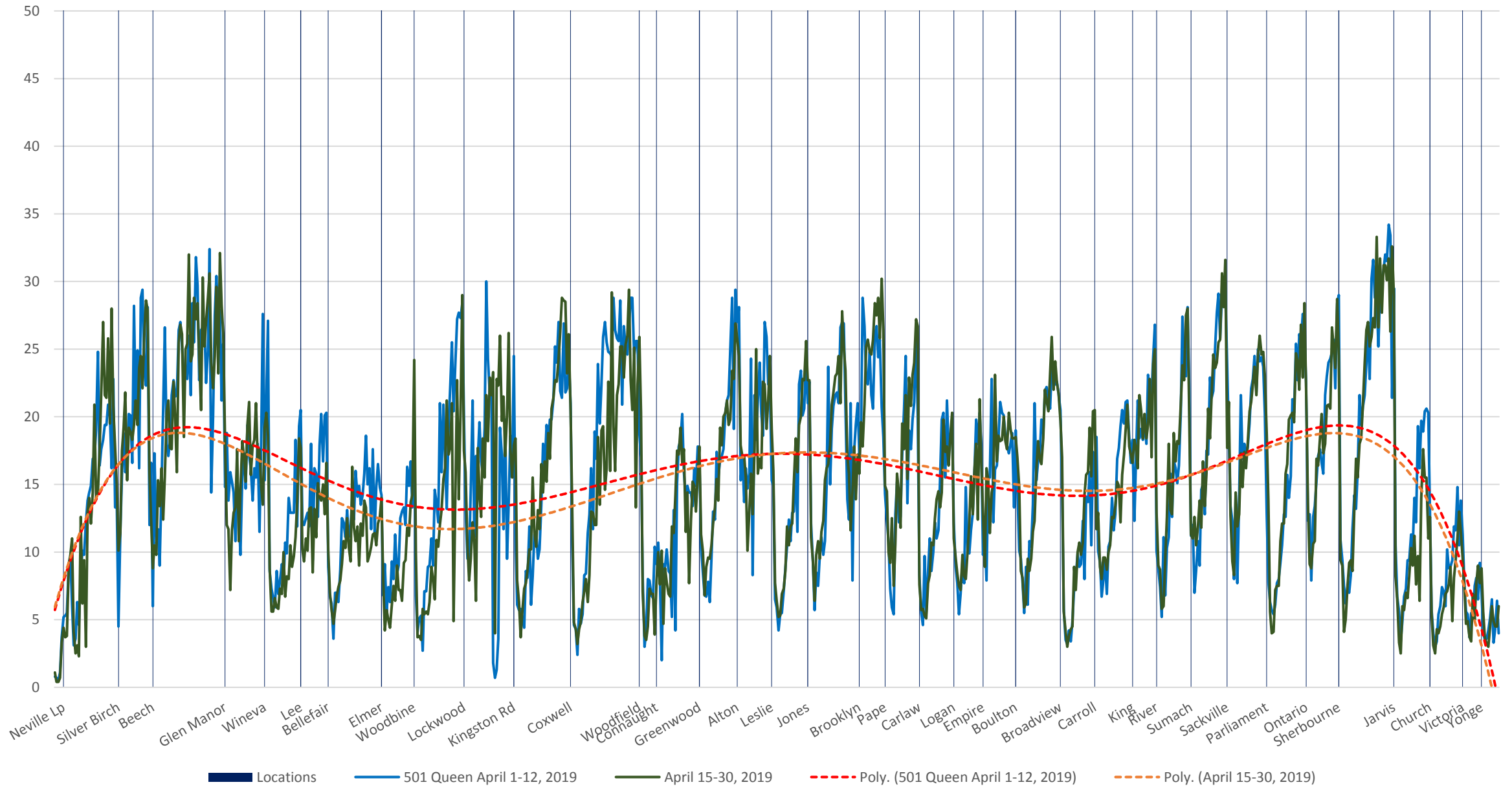
501 Queen April 1-12, 2019 (Blue) vs April 15-30, 2019 (Green) Eastbound Average Speed 1300 to 1400



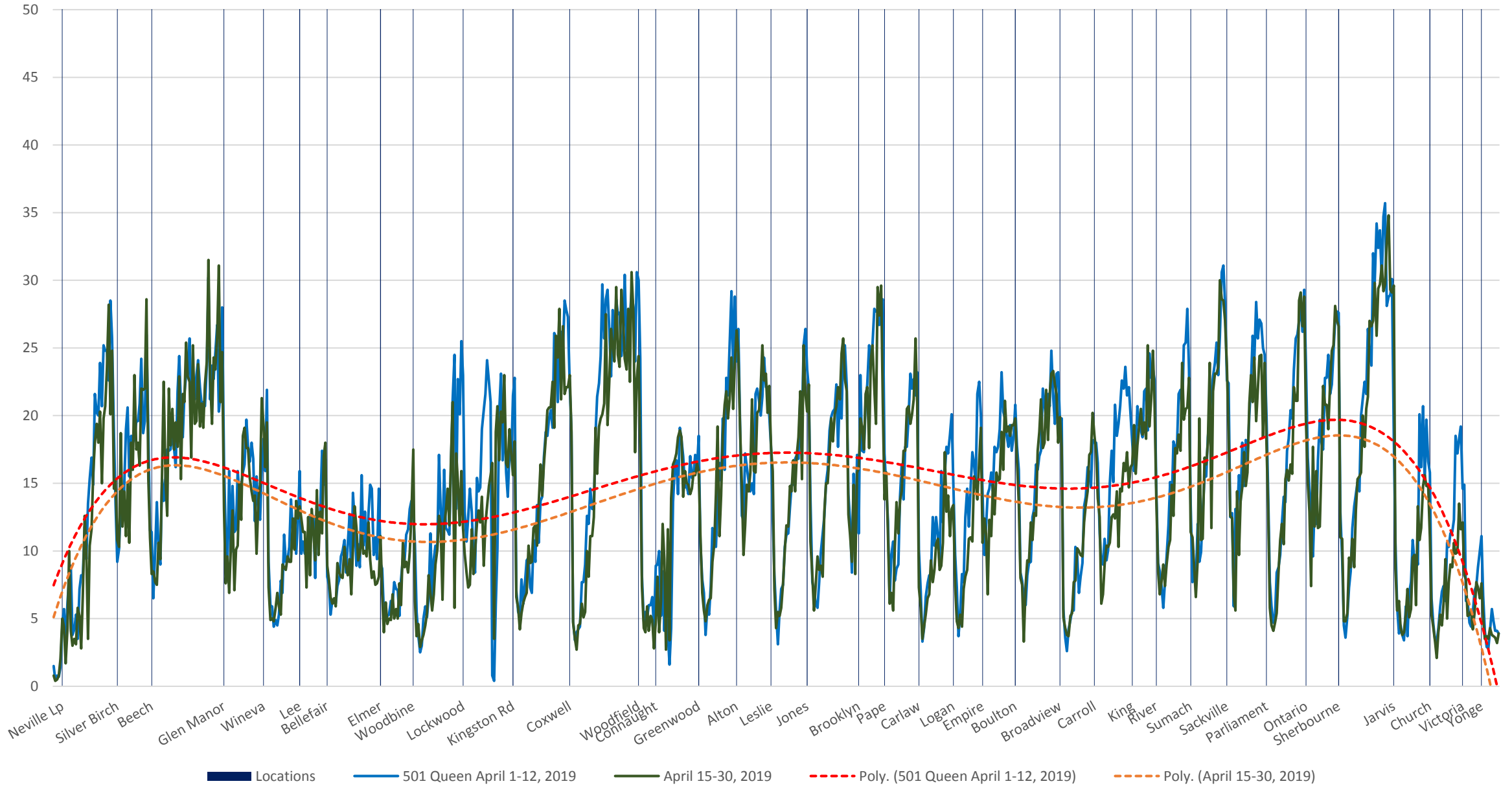
Locations 501 Queen April 1-12, 2019 April 15-30, 2019 Poly. (501 Queen April 1-12, 2019) Poly. (April 15-30, 2019)



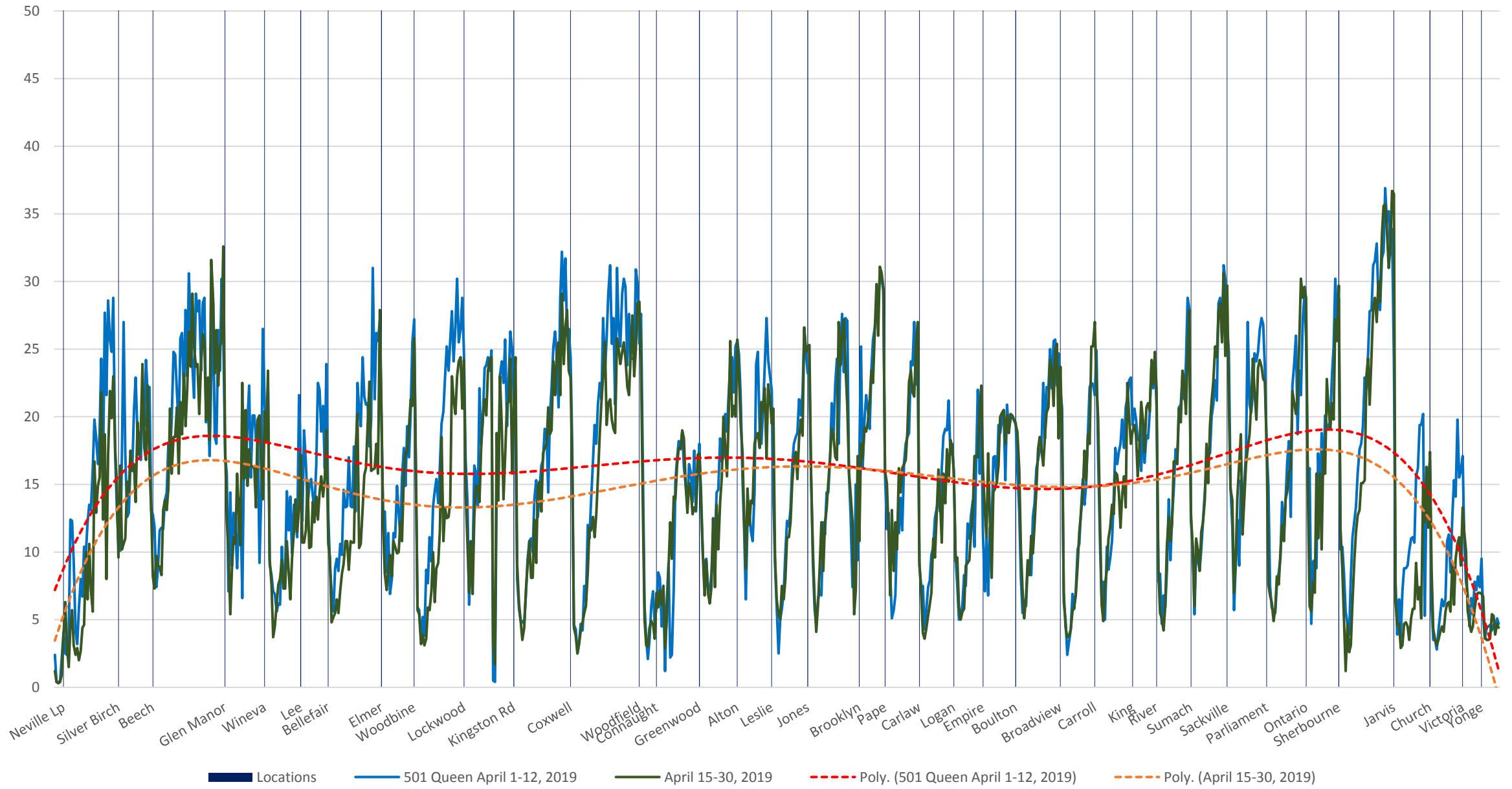
501 Queen April 1-12, 2019 (Blue) vs April 15-30, 2019 (Green) Eastbound Average Speed 1400 to 1500



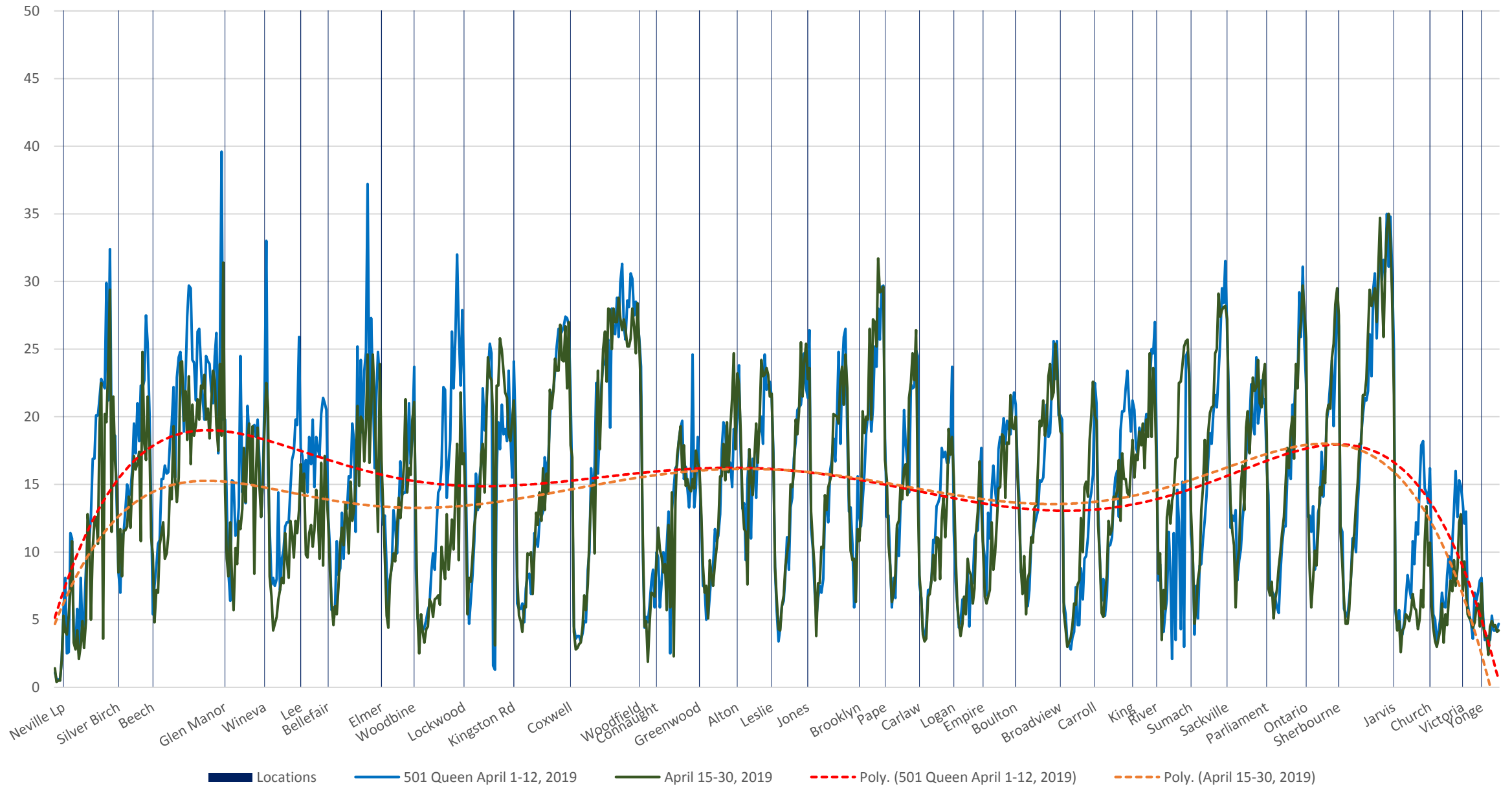
501 Queen April 1-12, 2019 (Blue) vs April 15-30, 2019 (Green) Eastbound Average Speed 1500 to 1600



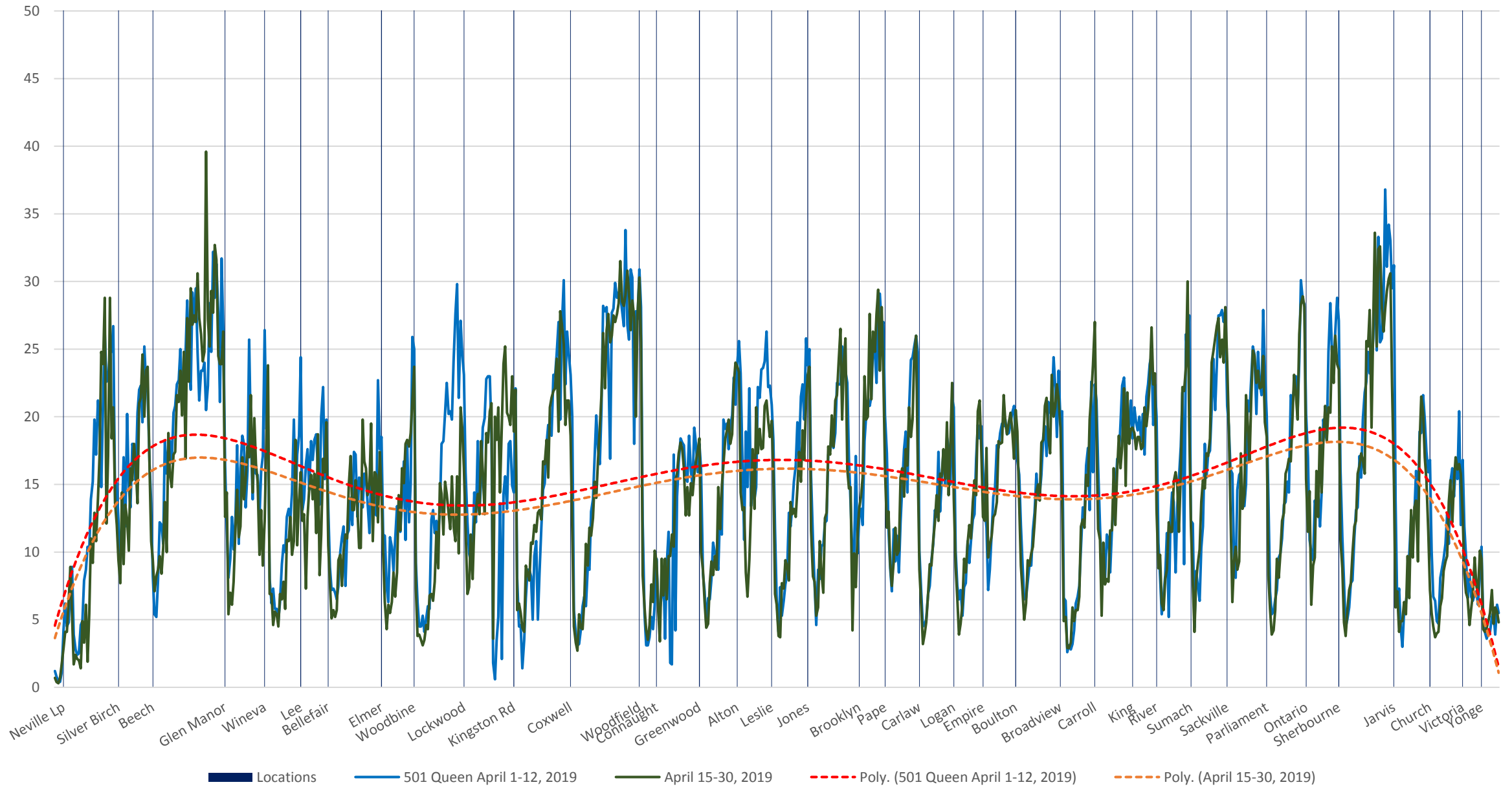
501 Queen April 1-12, 2019 (Blue) vs April 15-30, 2019 (Green) Eastbound Average Speed 1600 to 1700



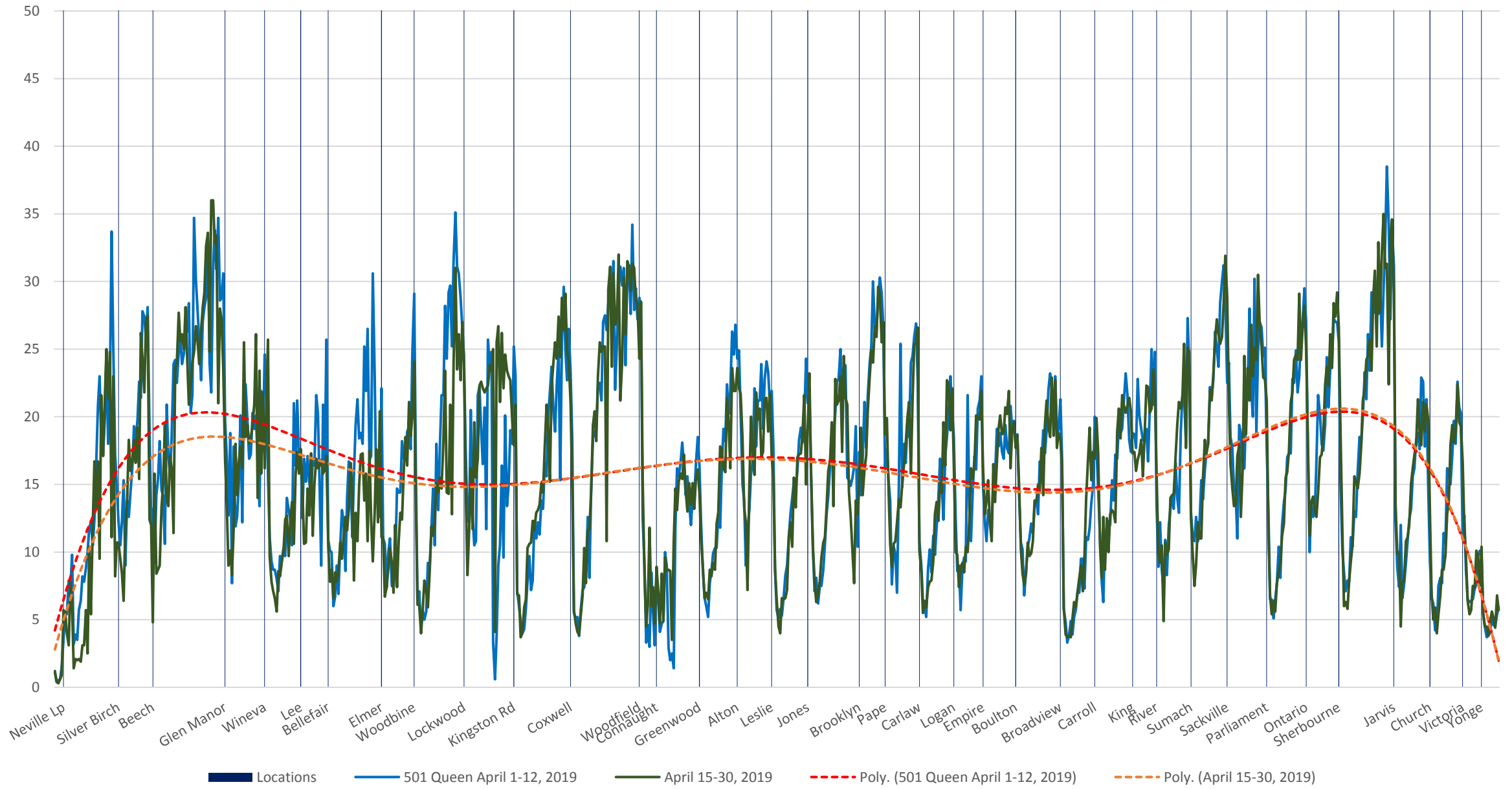
501 Queen April 1-12, 2019 (Blue) vs April 15-30, 2019 (Green) Eastbound Average Speed 1700 to 1800



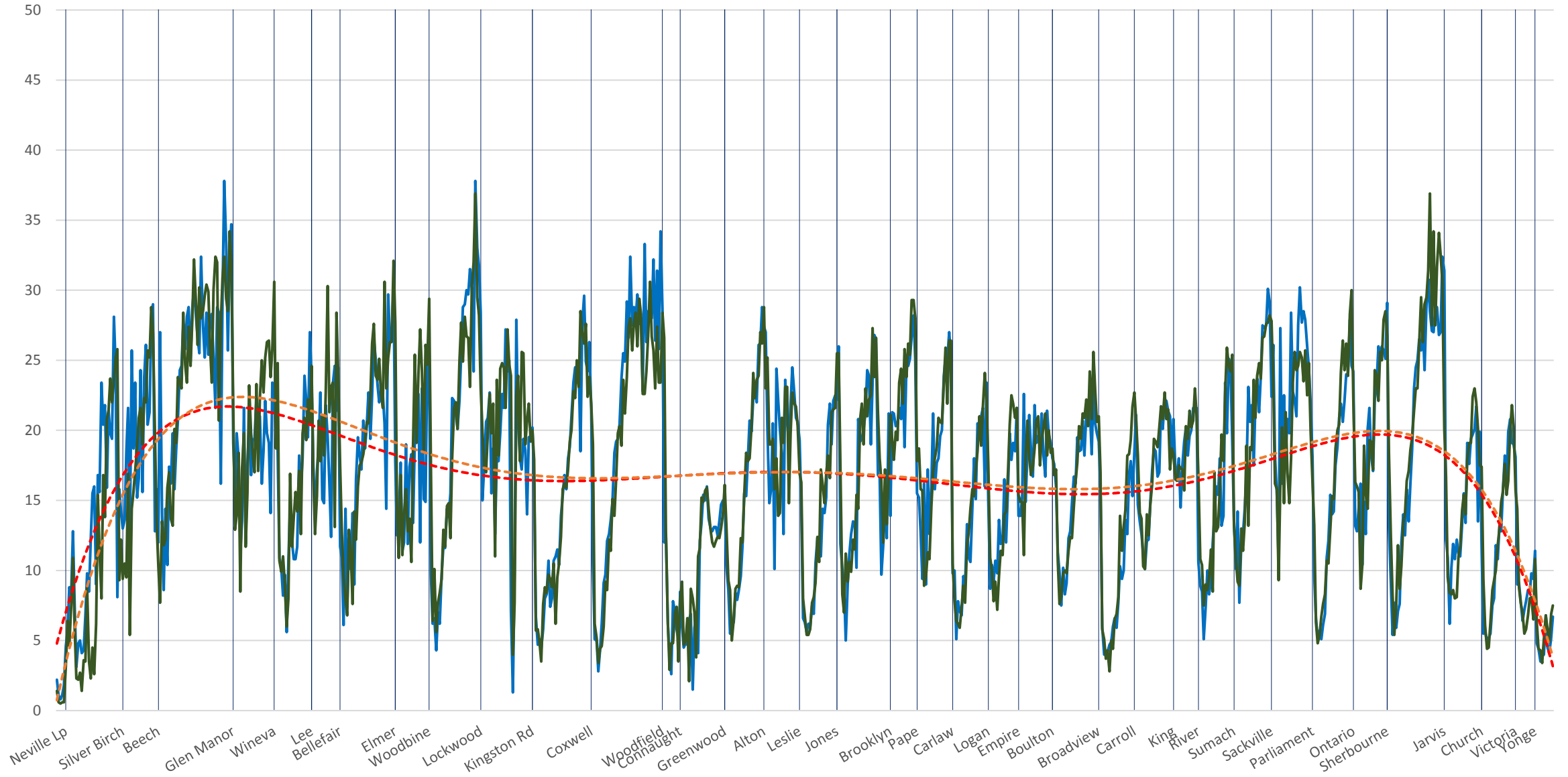
501 Queen April 1-12, 2019 (Blue) vs April 15-30, 2019 (Green) Eastbound Average Speed 1800 to 1900



501 Queen April 1-12, 2019 (Blue) vs April 15-30, 2019 (Green) Eastbound Average Speed 1900 to 2000

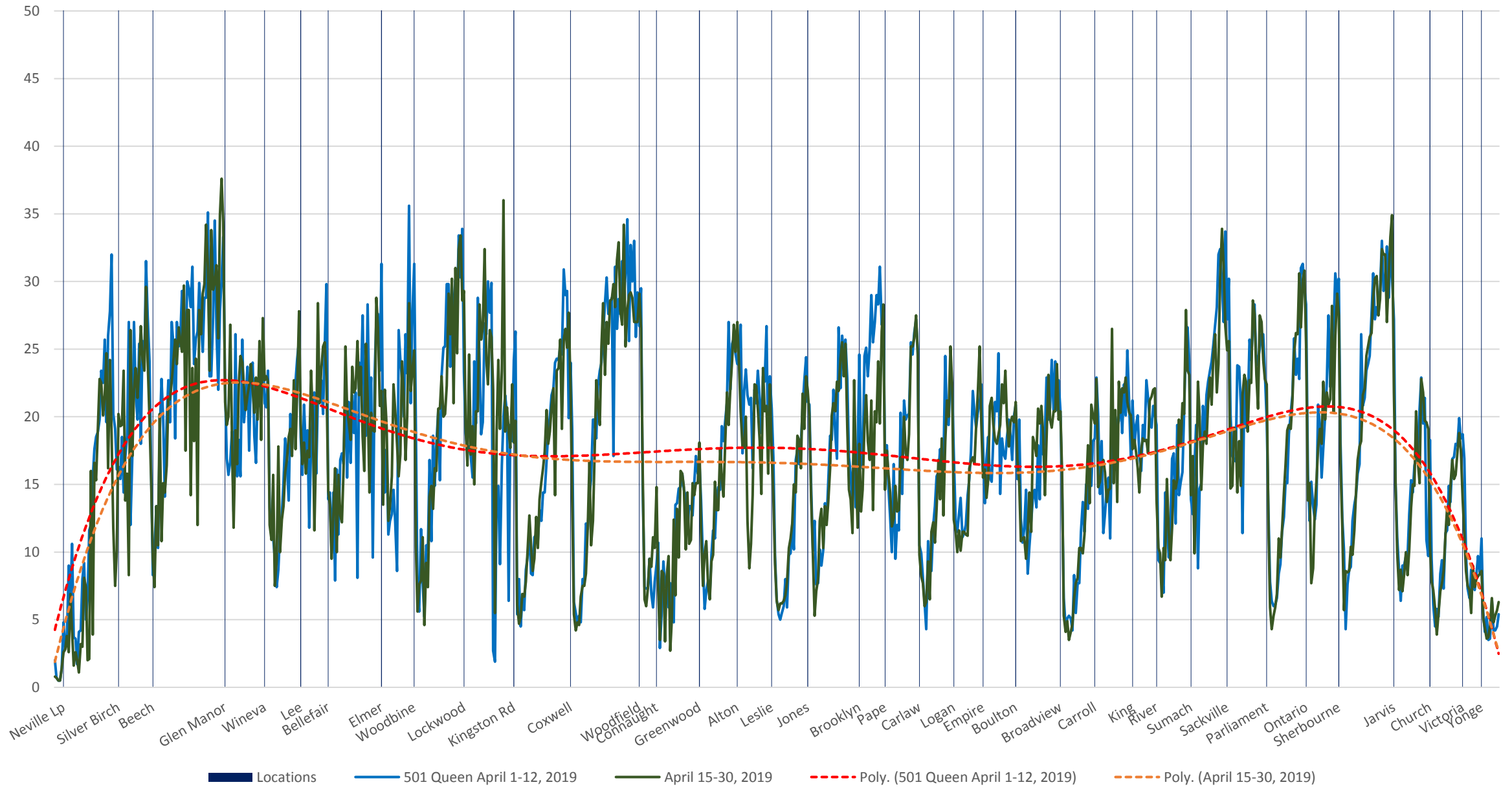


501 Queen April 1-12, 2019 (Blue) vs April 15-30, 2019 (Green) Eastbound Average Speed 2000 to 2100



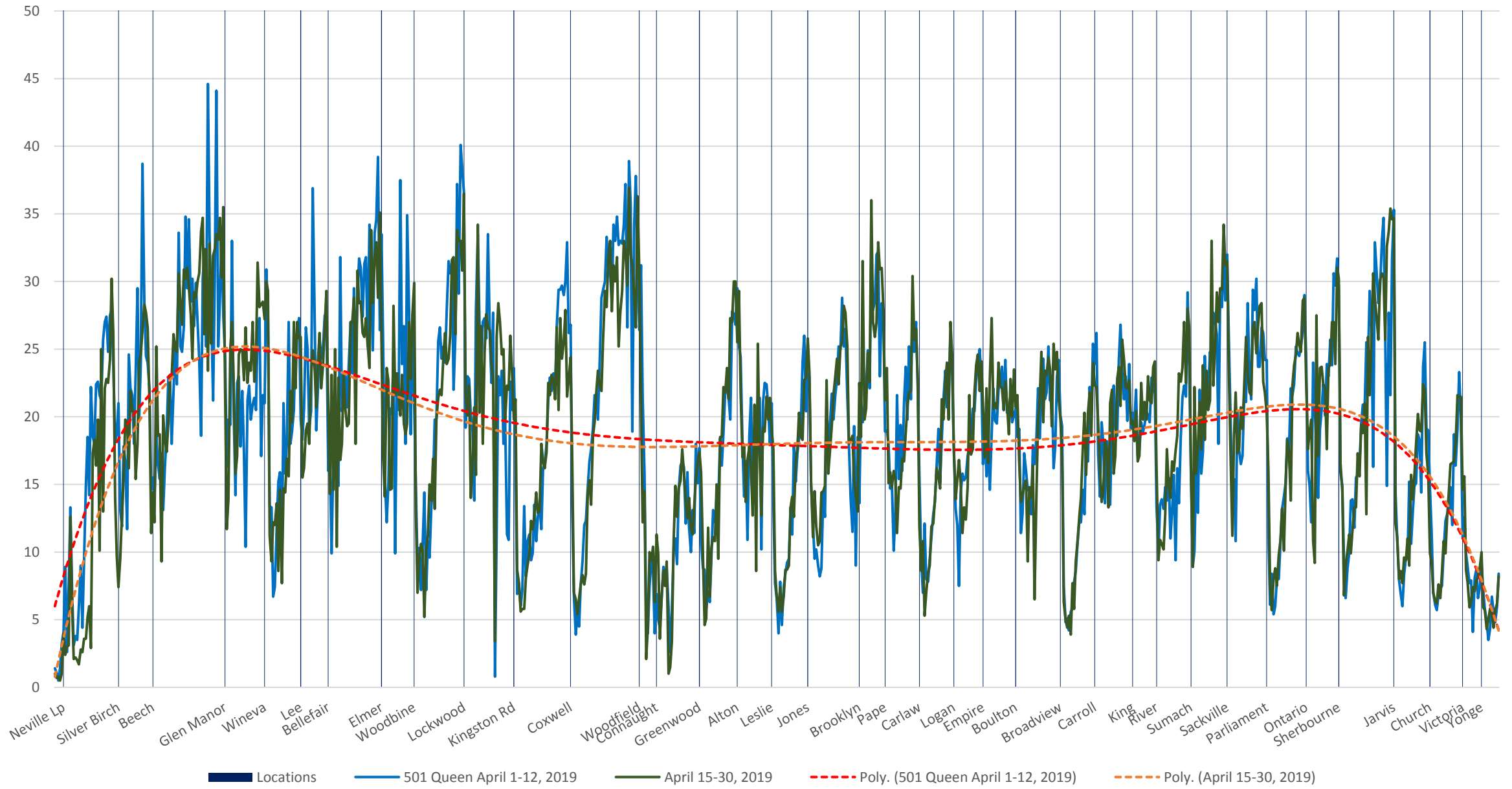
Locations 501 Queen April 1-12, 2019 April 15-30, 2019 Poly. (501 Queen April 1-12, 2019) Poly. (April 15-30, 2019)

501 Queen April 1-12, 2019 (Blue) vs April 15-30, 2019 (Green) Eastbound Average Speed 2100 to 2200





501 Queen April 1-12, 2019 (Blue) vs April 15-30, 2019 (Green) Eastbound Average Speed 2200 to 2300



501 Queen April 1-12, 2019 (Blue) vs April 15-30, 2019 (Green) Eastbound Average Speed 2300 to 2400

