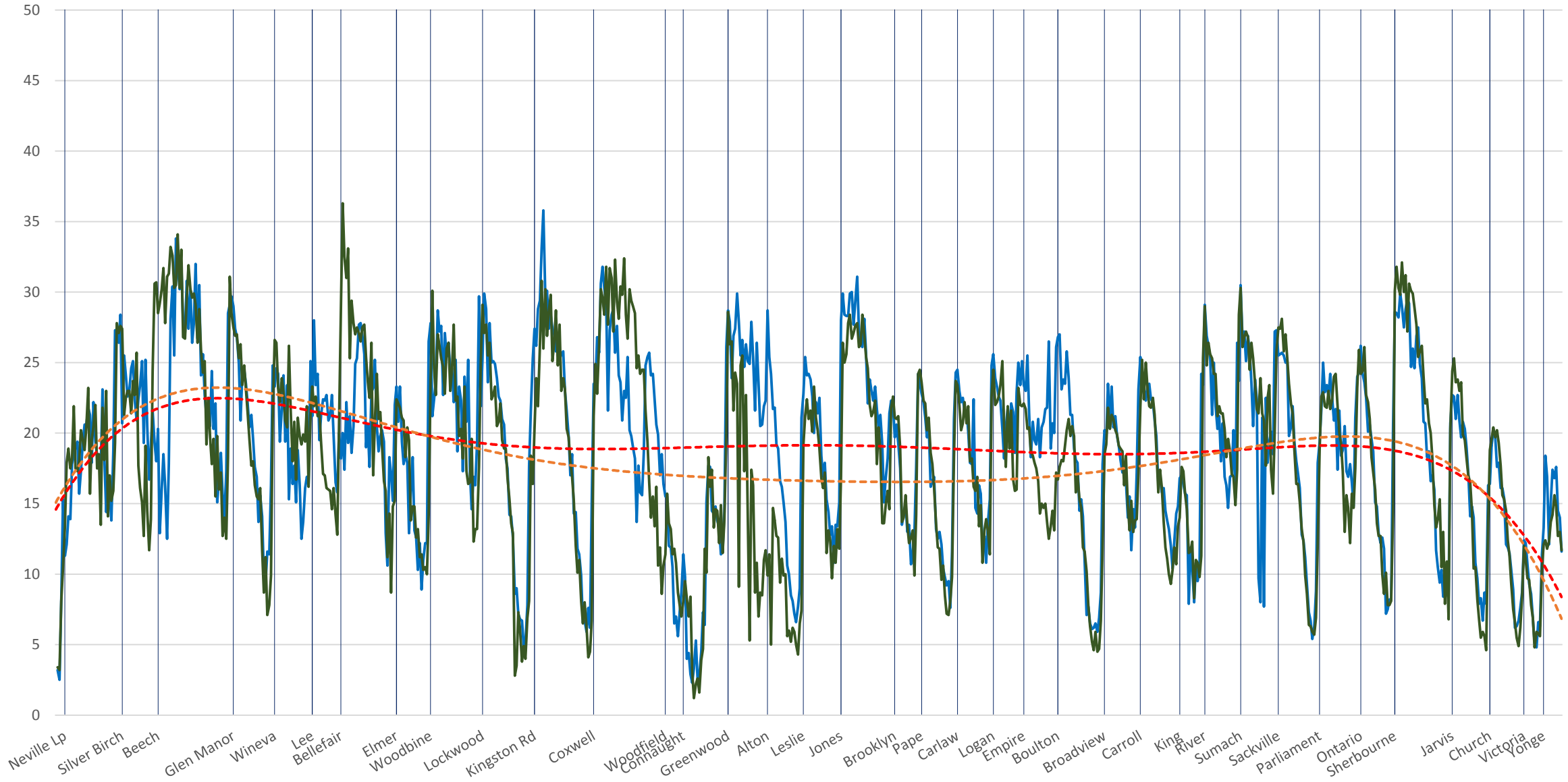
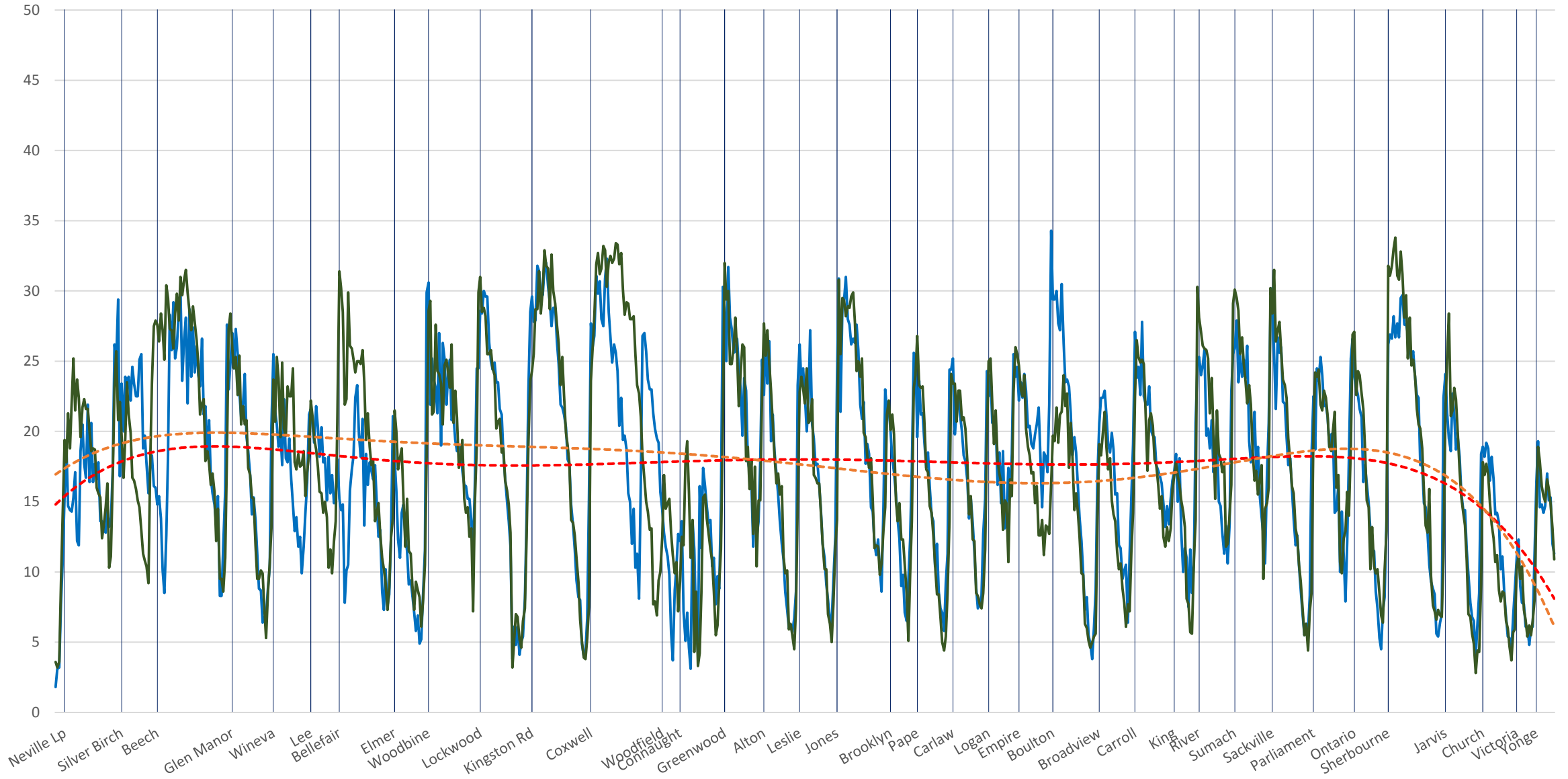


501 Queen Apr 2018 (Blue) vs Apr 2019 (Green) Westbound Average Speed 600 to 700



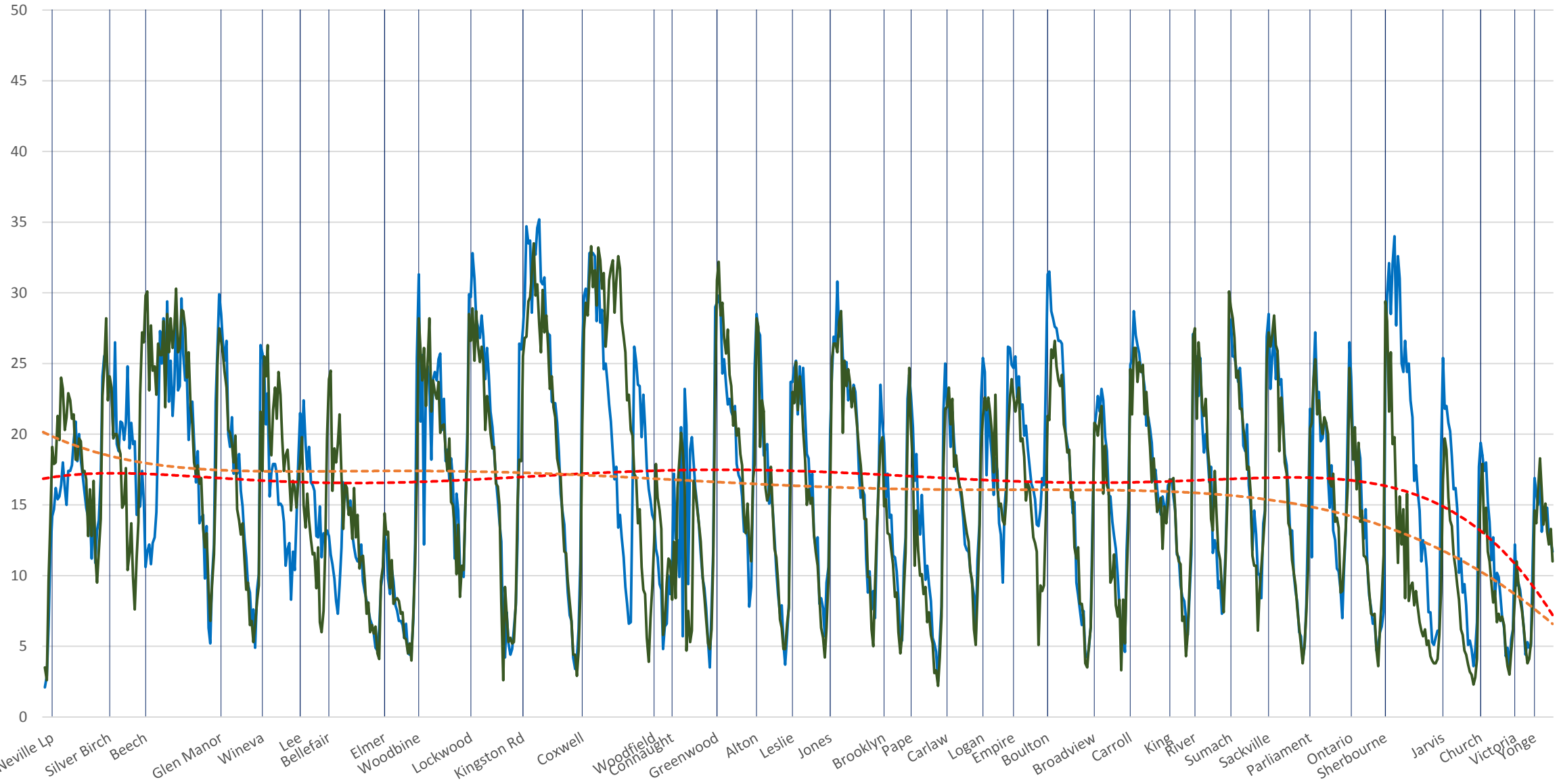
█ Locations   
 — 501 Queen Apr 2018   
 — Apr 2019   
 - - - Poly. (501 Queen Apr 2018)   
 - - - Poly. (Apr 2019)

501 Queen Apr 2018 (Blue) vs Apr 2019 (Green) Westbound Average Speed 700 to 800



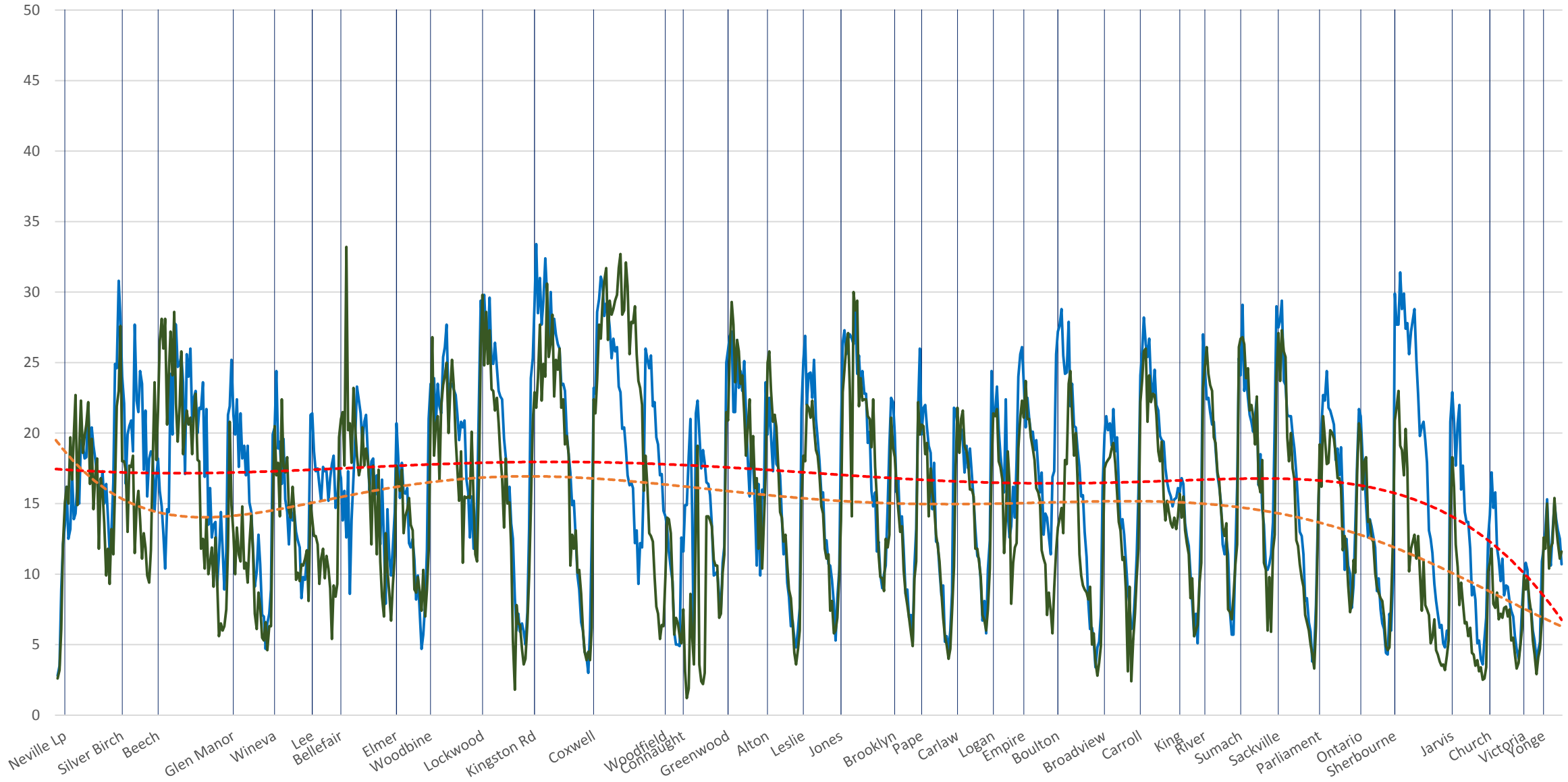
█ Locations   
 — 501 Queen Apr 2018   
 — Apr 2019   
 - - - Poly. (501 Queen Apr 2018)   
 - - - Poly. (Apr 2019)

501 Queen Apr 2018 (Blue) vs Apr 2019 (Green) Westbound Average Speed 800 to 900



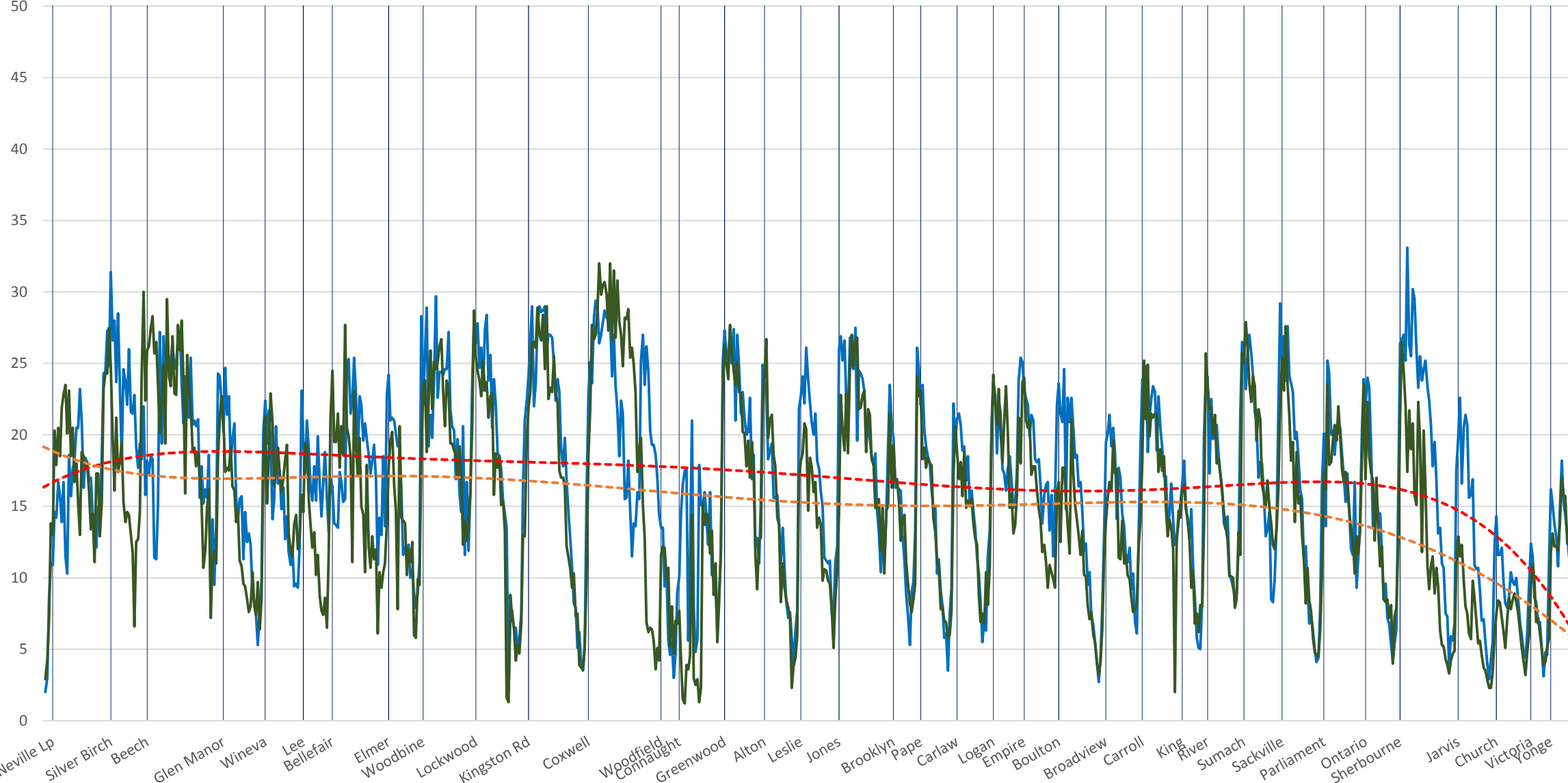
█ Locations    
 — 501 Queen Apr 2018    
 — Apr 2019    
 - - - Poly. (501 Queen Apr 2018)    
 - - - Poly. (Apr 2019)

501 Queen Apr 2018 (Blue) vs Apr 2019 (Green) Westbound Average Speed 900 to 1000



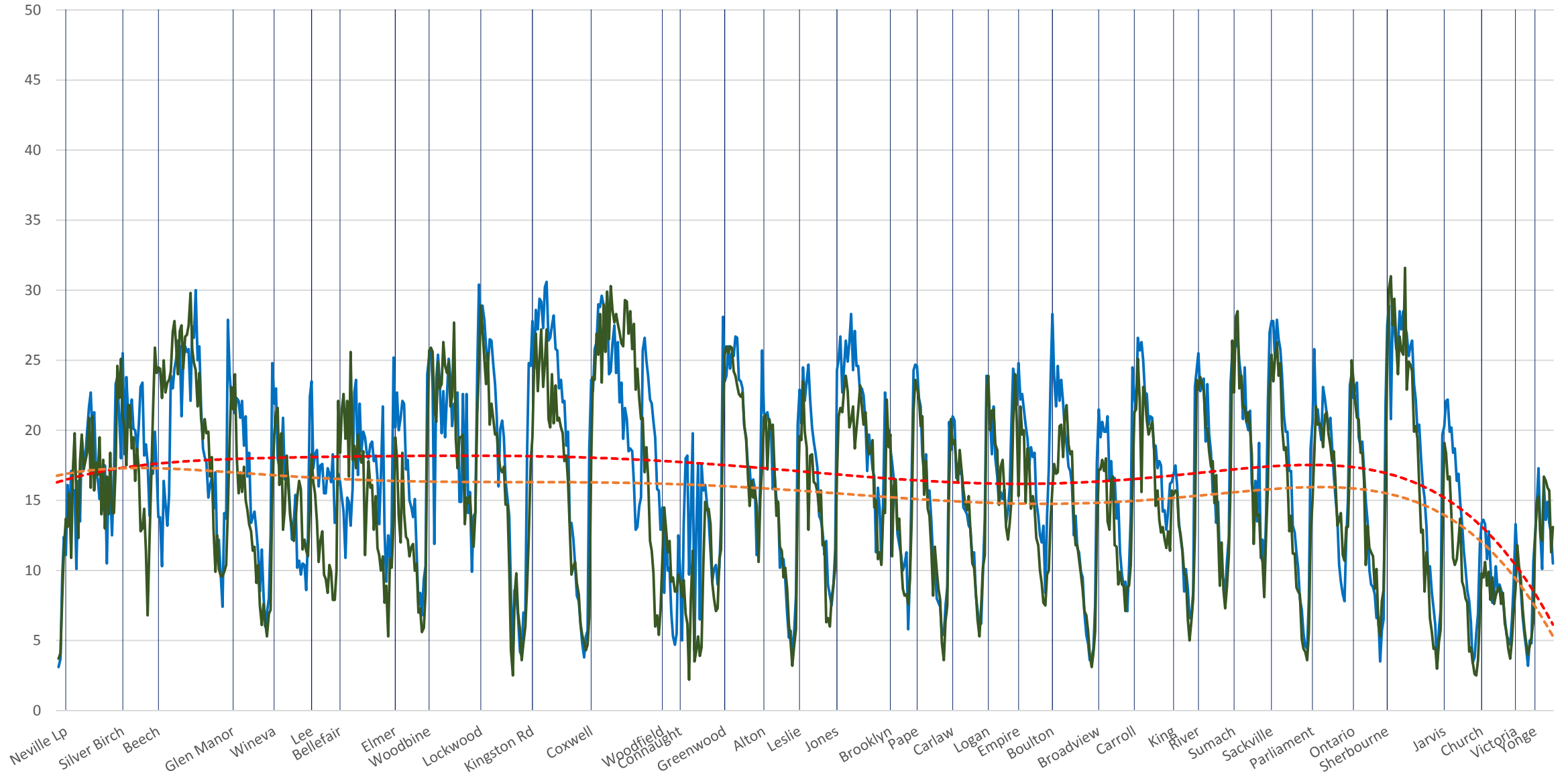
Locations 501 Queen Apr 2018 Apr 2019 Poly. (501 Queen Apr 2018) Poly. (Apr 2019)

501 Queen Apr 2018 (Blue) vs Apr 2019 (Green) Westbound Average Speed 1000 to 1100



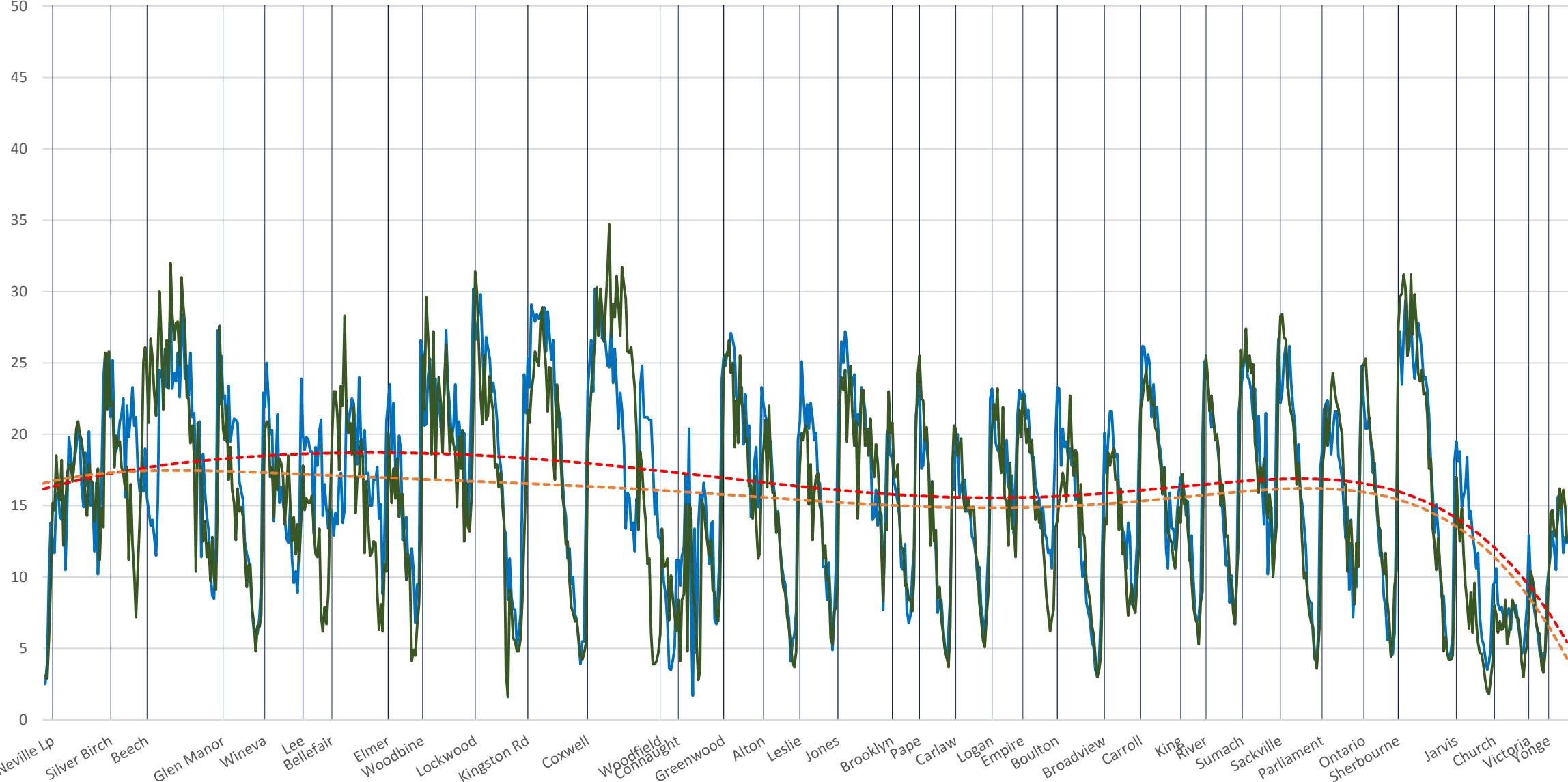
Locations 501 Queen Apr 2018 Apr 2019 Poly. (501 Queen Apr 2018) Poly. (Apr 2019)

501 Queen Apr 2018 (Blue) vs Apr 2019 (Green) Westbound Average Speed 1100 to 1200



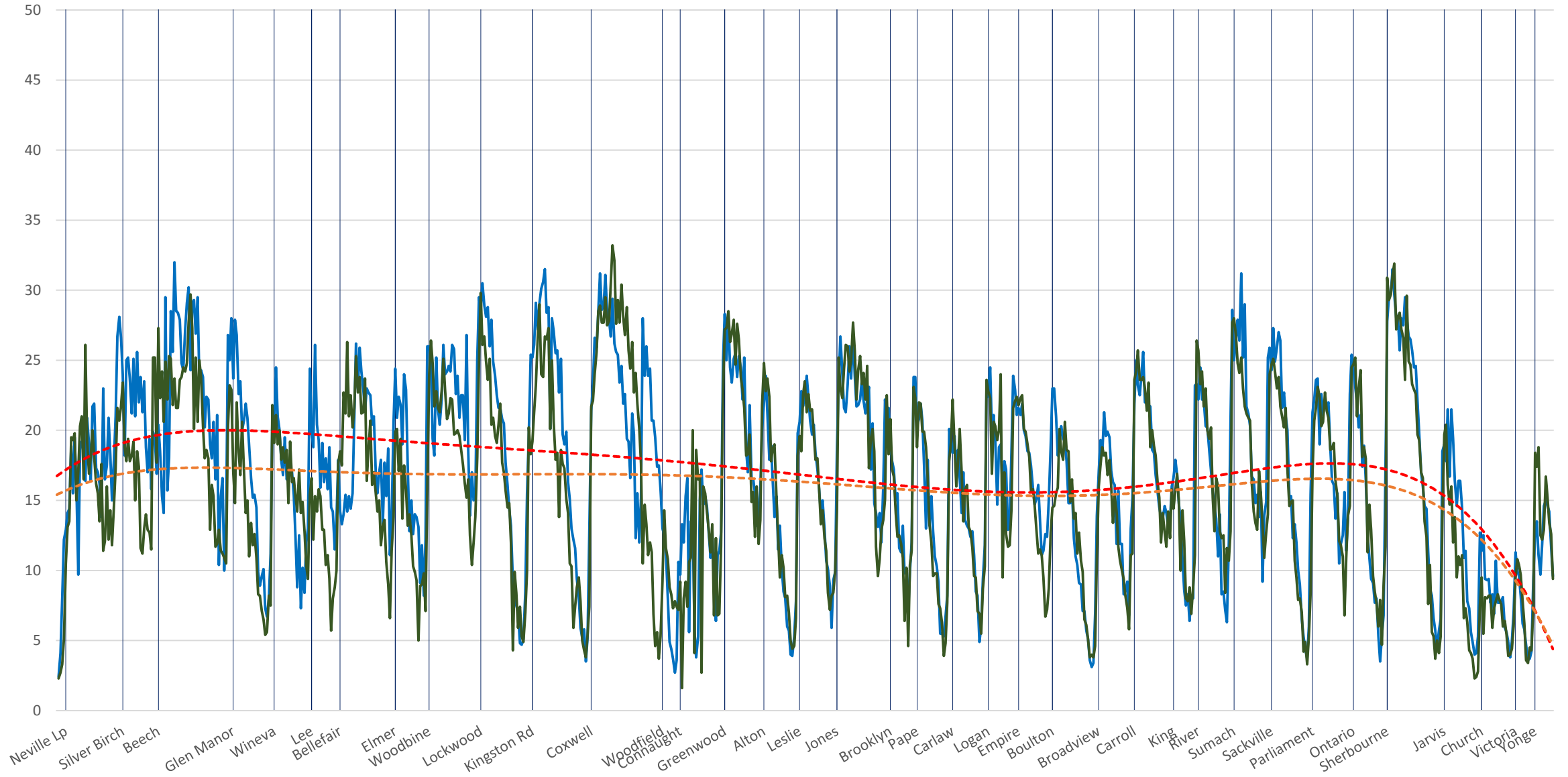
█ Locations    
 — 501 Queen Apr 2018    
 — Apr 2019    
 - - - Poly. (501 Queen Apr 2018)    
 - - - Poly. (Apr 2019)

501 Queen Apr 2018 (Blue) vs Apr 2019 (Green) Westbound Average Speed 1200 to 1300



Locations 501 Queen Apr 2018 Apr 2019 Poly. (501 Queen Apr 2018) Poly. (Apr 2019)

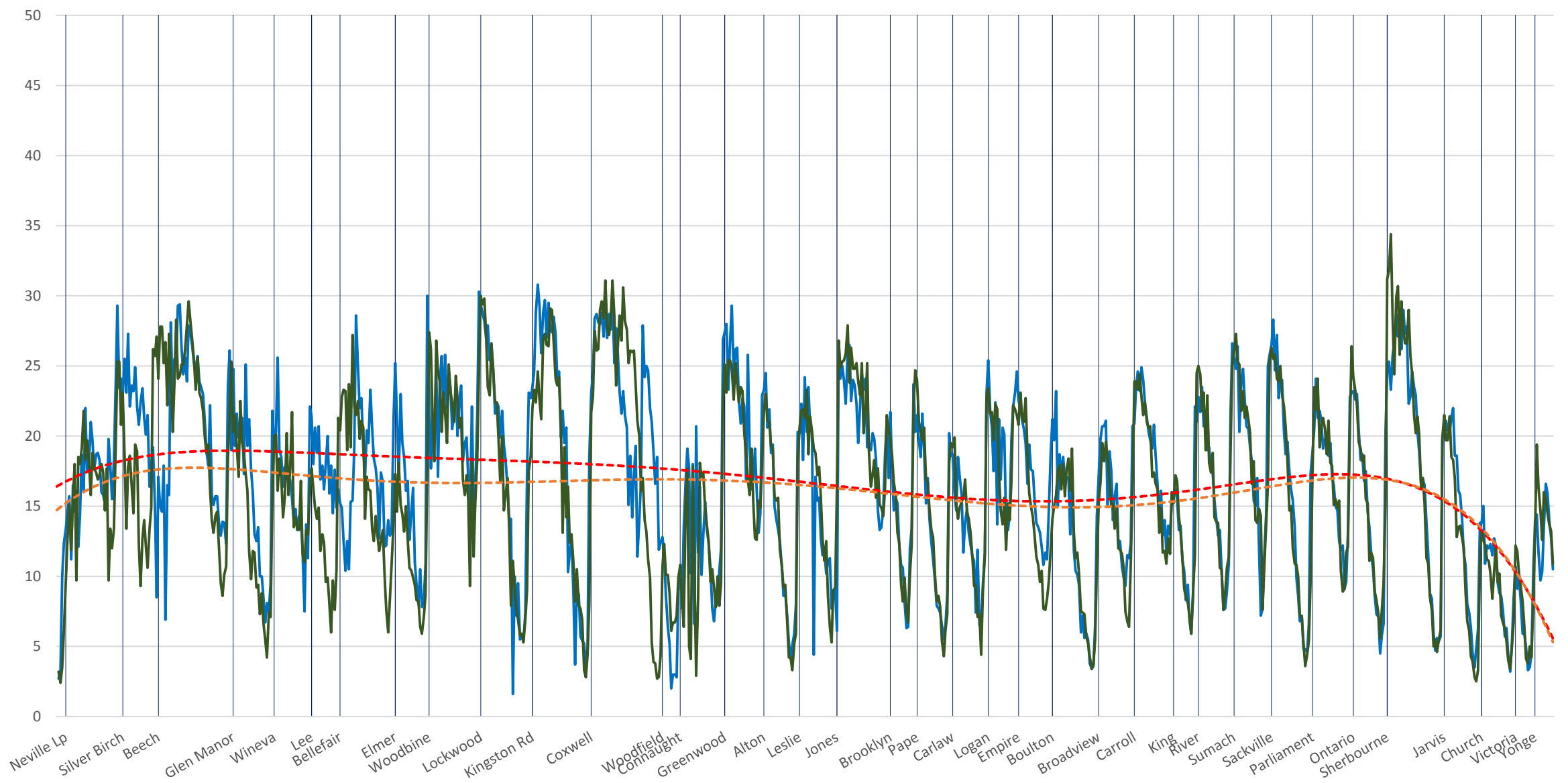
501 Queen Apr 2018 (Blue) vs Apr 2019 (Green) Westbound Average Speed 1300 to 1400



█ Locations    
 — 501 Queen Apr 2018    
 — Apr 2019    
 - - - Poly. (501 Queen Apr 2018)    
 - - - Poly. (Apr 2019)

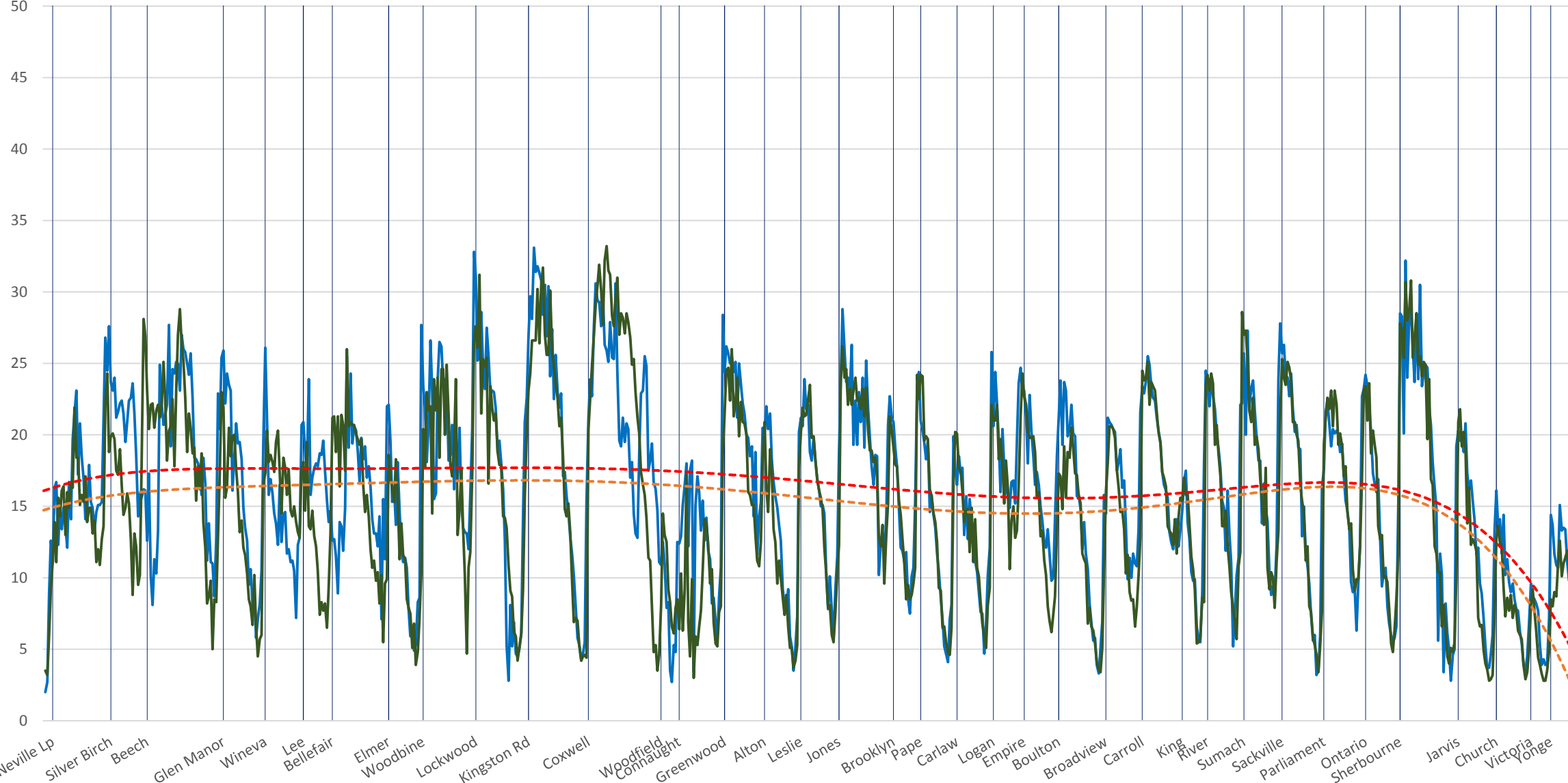


501 Queen Apr 2018 (Blue) vs Apr 2019 (Green) Westbound Average Speed 1400 to 1500



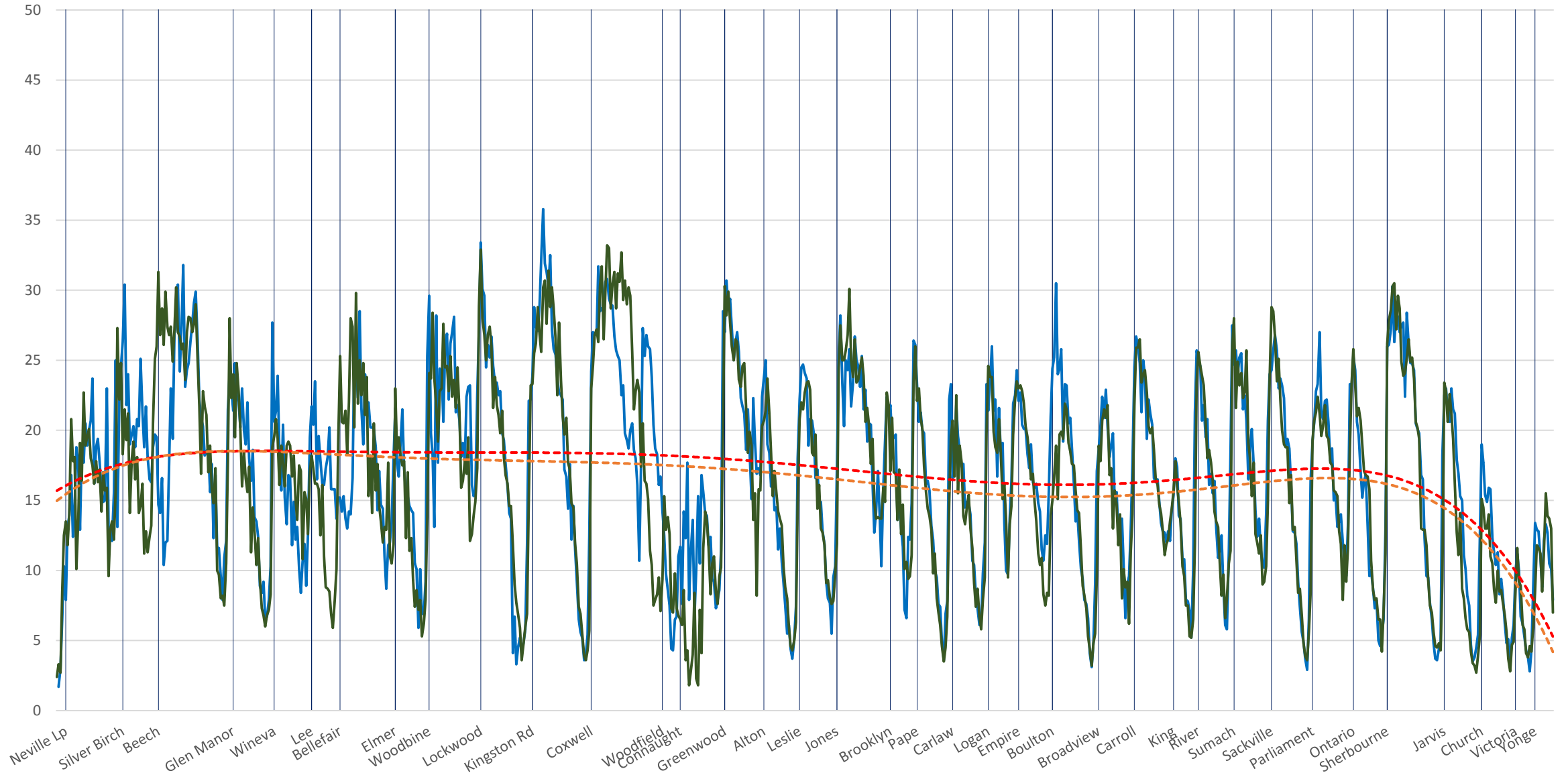
█ Locations   
 — 501 Queen Apr 2018   
 — Apr 2019   
 - - - Poly. (501 Queen Apr 2018)   
 - - - Poly. (Apr 2019)

501 Queen Apr 2018 (Blue) vs Apr 2019 (Green) Westbound Average Speed 1500 to 1600



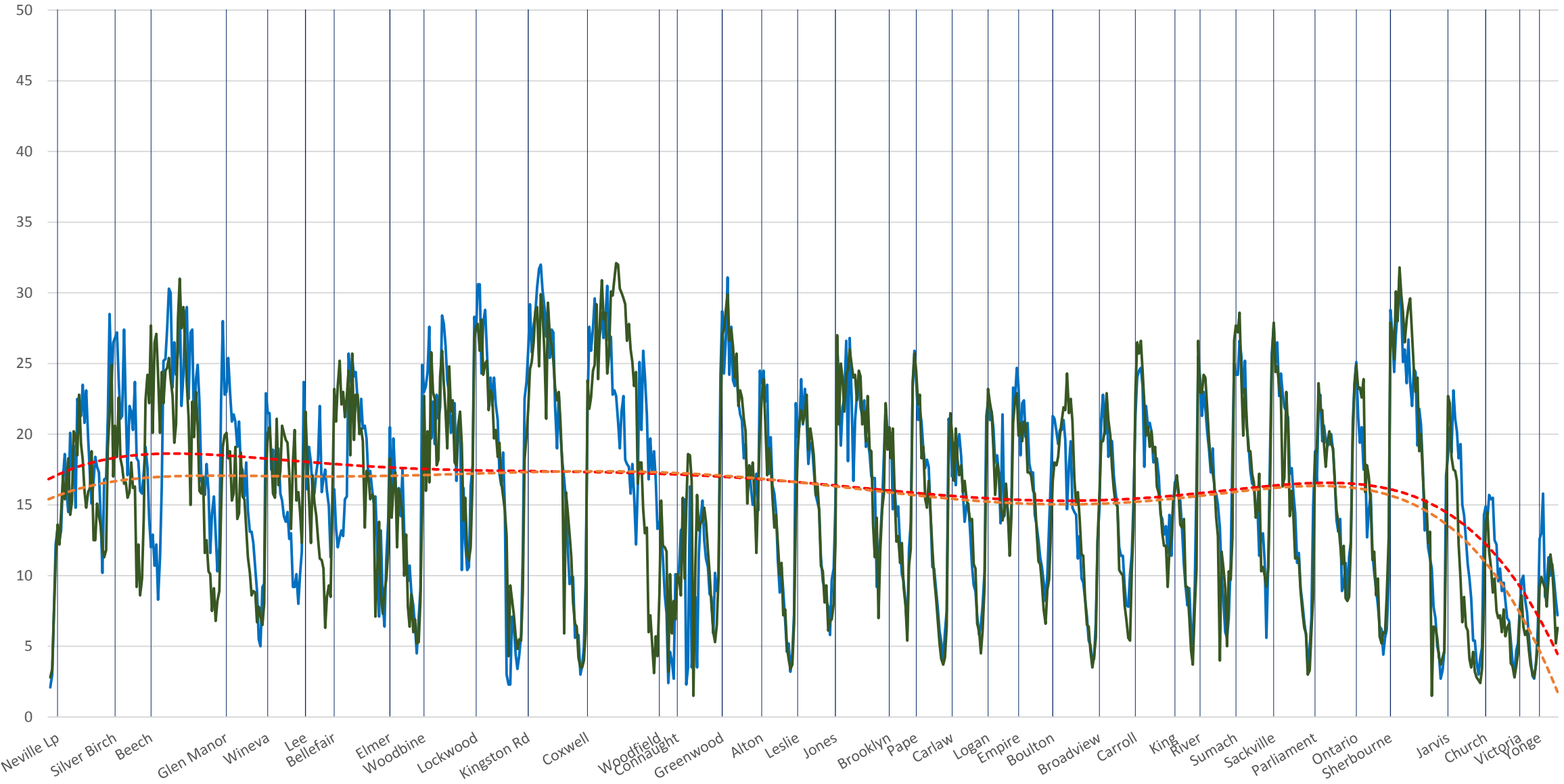
Locations 501 Queen Apr 2018 Apr 2019 Poly. (501 Queen Apr 2018) Poly. (Apr 2019)

501 Queen Apr 2018 (Blue) vs Apr 2019 (Green) Westbound Average Speed 1600 to 1700



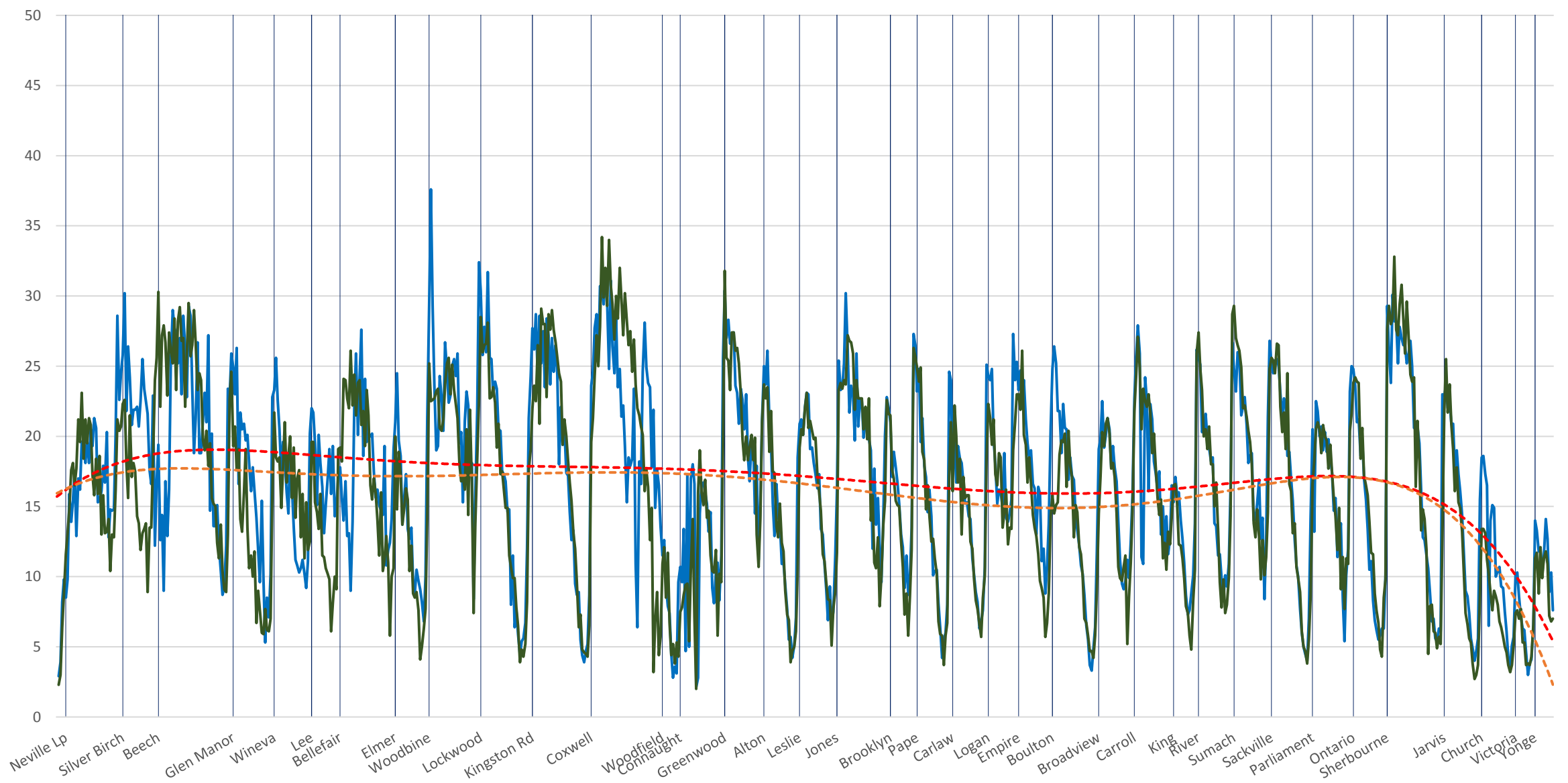
█ Locations    
 — 501 Queen Apr 2018    
 — Apr 2019    
 - - - Poly. (501 Queen Apr 2018)    
 - - - Poly. (Apr 2019)

501 Queen Apr 2018 (Blue) vs Apr 2019 (Green) Westbound Average Speed 1700 to 1800



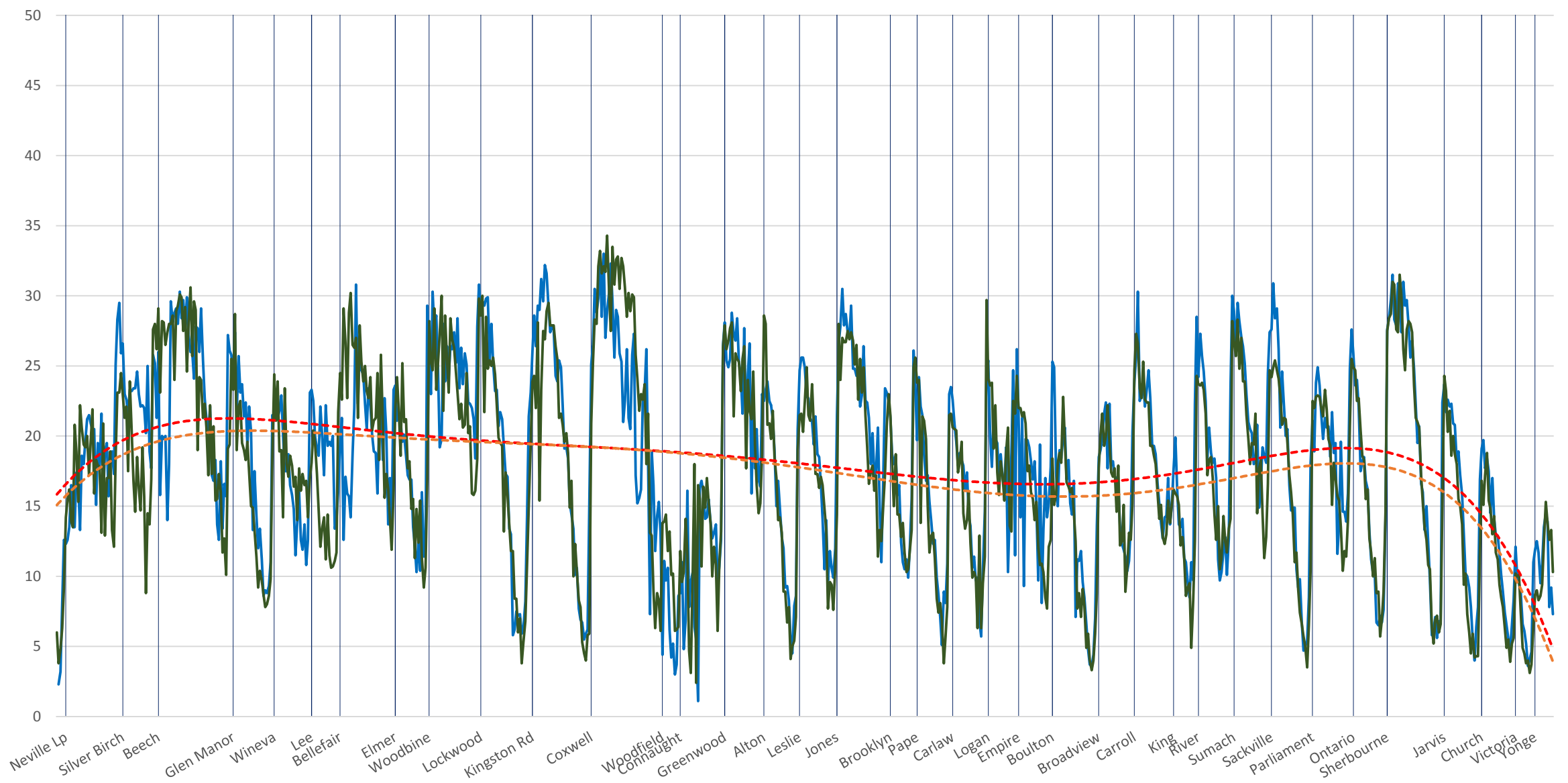
Locations 501 Queen Apr 2018 Apr 2019 Poly. (501 Queen Apr 2018) Poly. (Apr 2019)

501 Queen Apr 2018 (Blue) vs Apr 2019 (Green) Westbound Average Speed 1800 to 1900



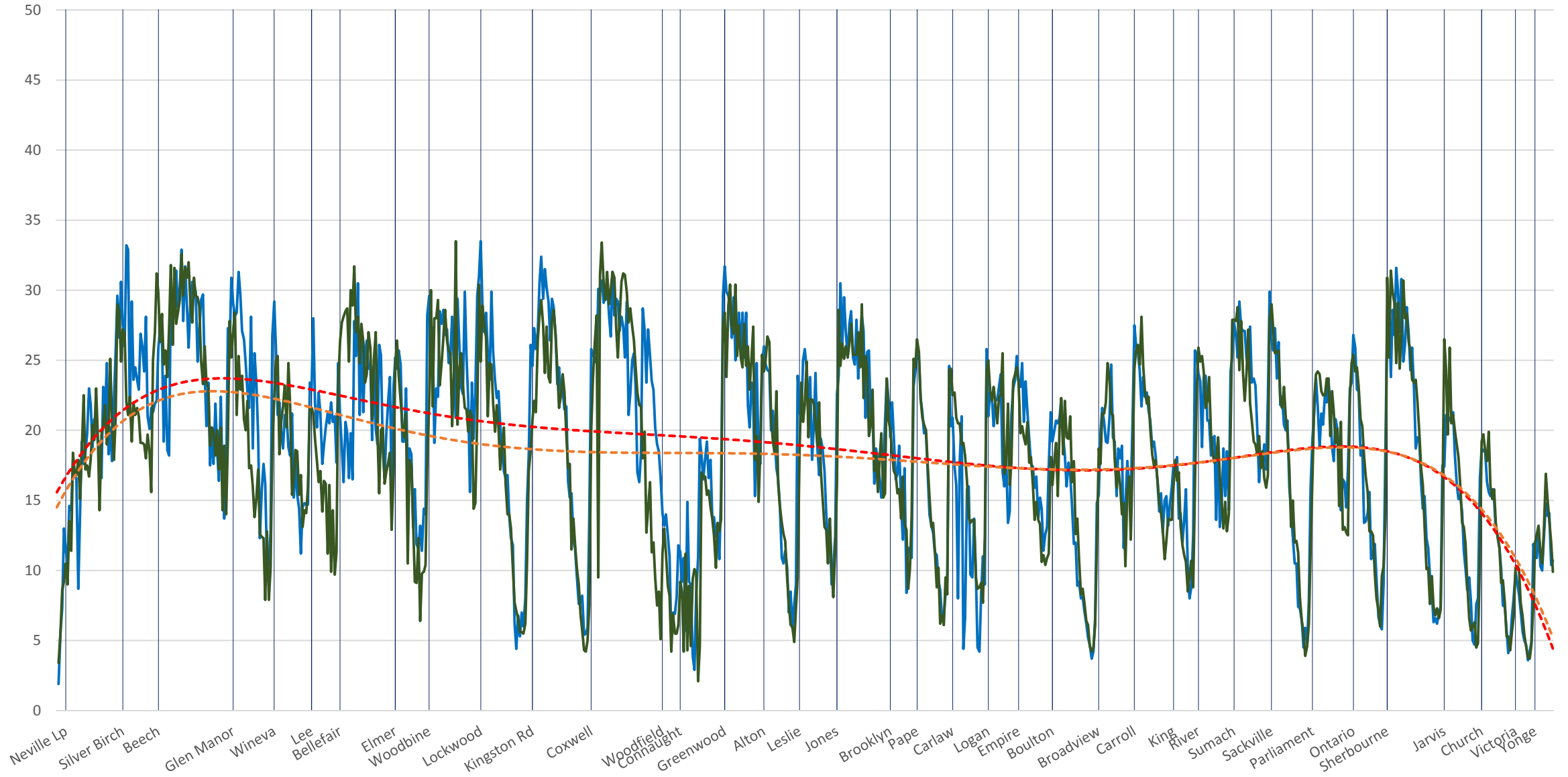
Locations    501 Queen Apr 2018    Apr 2019    Poly. (501 Queen Apr 2018)    Poly. (Apr 2019)

501 Queen Apr 2018 (Blue) vs Apr 2019 (Green) Westbound Average Speed 1900 to 2000



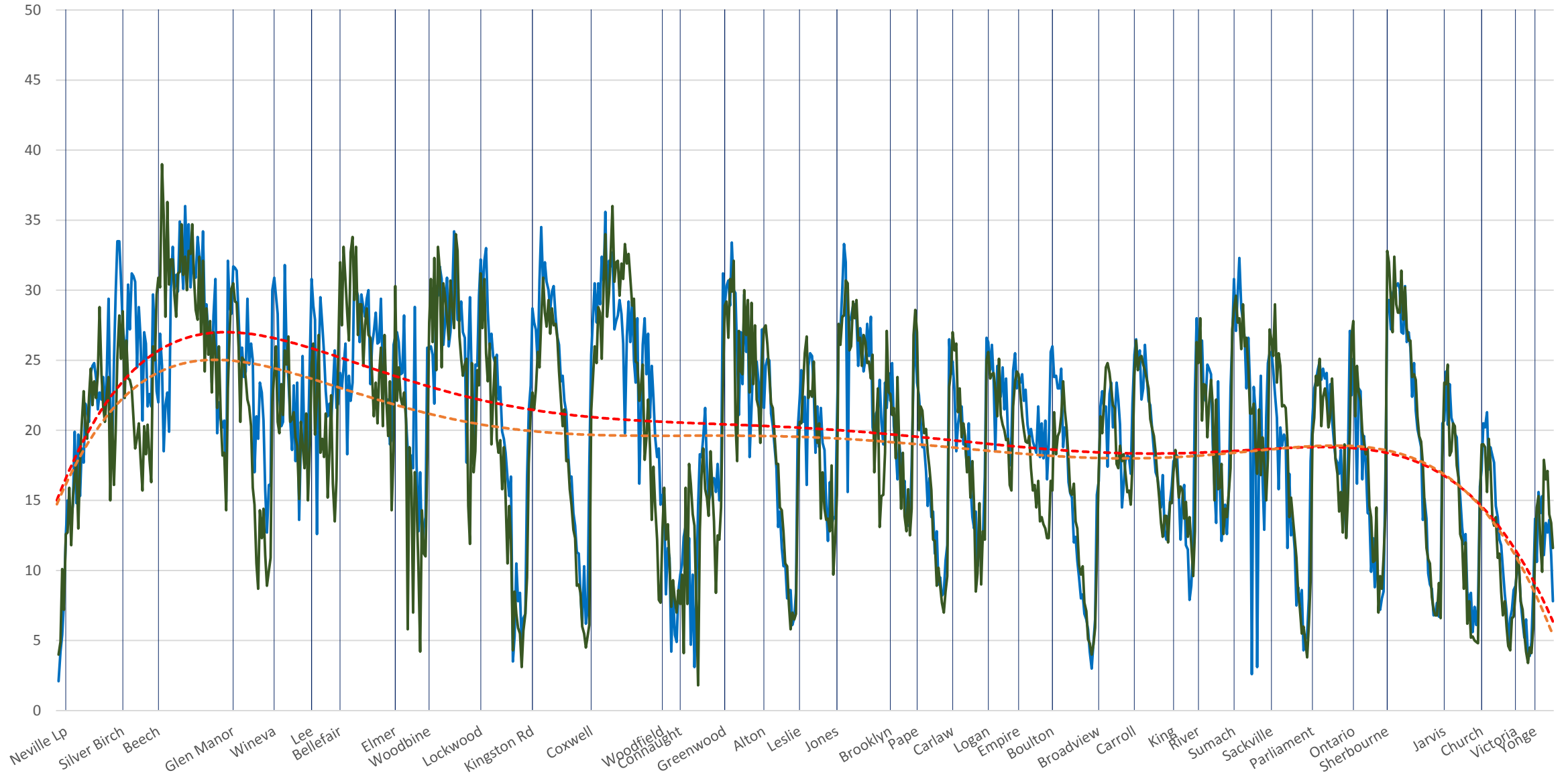
█ Locations    
 — 501 Queen Apr 2018    
 — Apr 2019    
 - - - Poly. (501 Queen Apr 2018)    
 - - - Poly. (Apr 2019)

501 Queen Apr 2018 (Blue) vs Apr 2019 (Green) Westbound Average Speed 2000 to 2100



Locations 501 Queen Apr 2018 Apr 2019 Poly. (501 Queen Apr 2018) Poly. (Apr 2019)

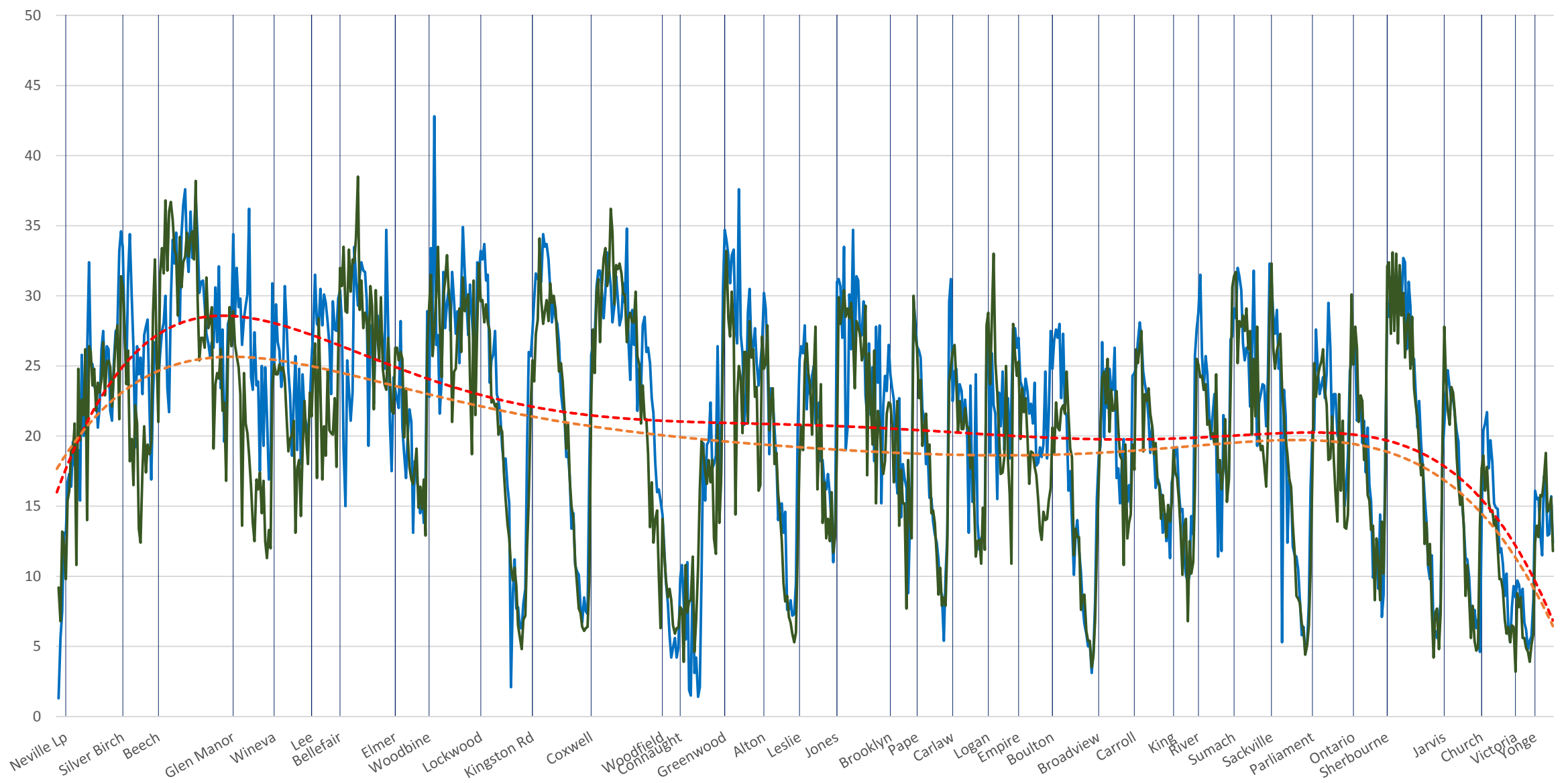
501 Queen Apr 2018 (Blue) vs Apr 2019 (Green) Westbound Average Speed 2100 to 2200



█ Locations    
 — 501 Queen Apr 2018    
 — Apr 2019    
 - - - Poly. (501 Queen Apr 2018)    
 - - - Poly. (Apr 2019)

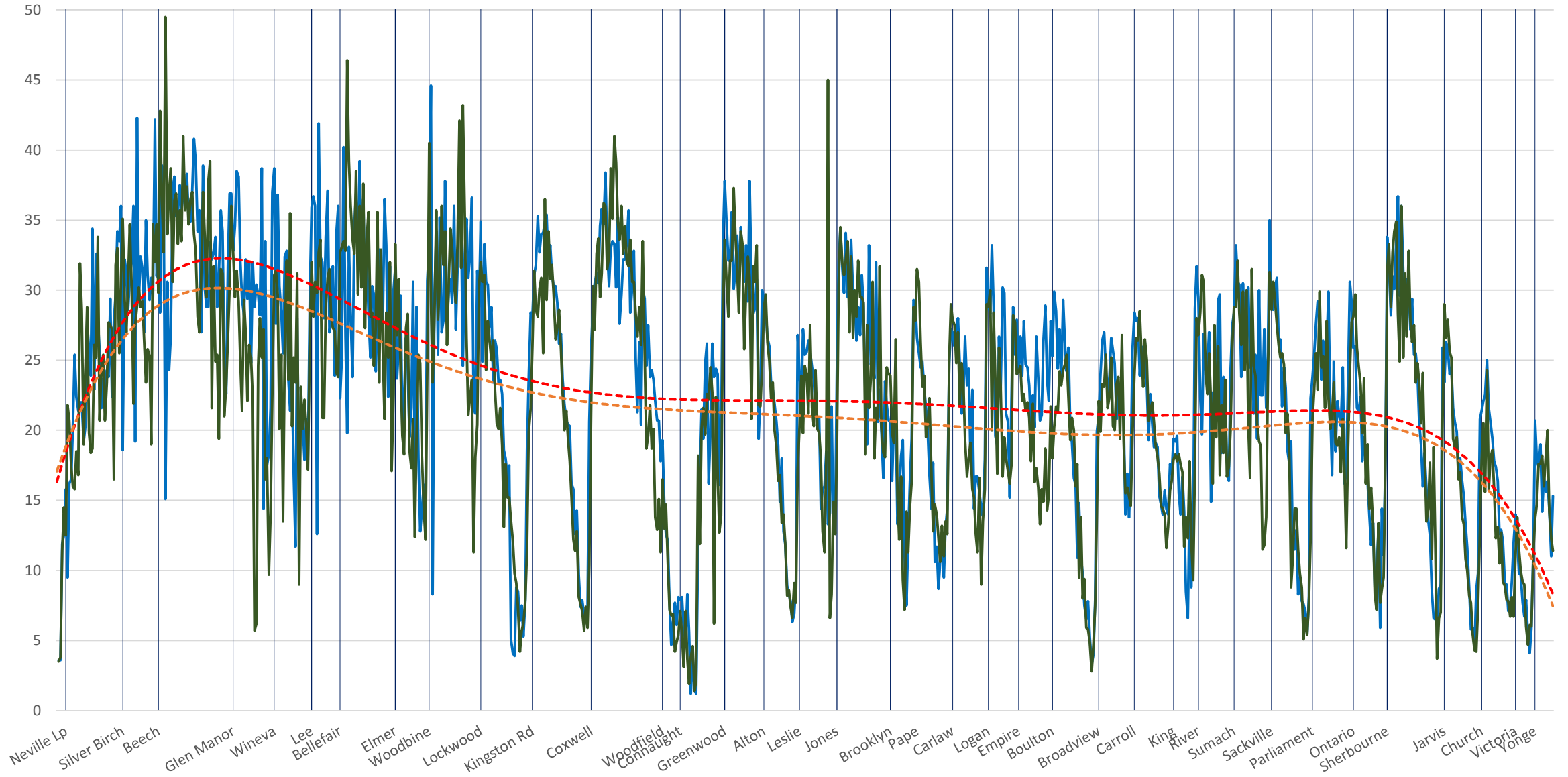


501 Queen Apr 2018 (Blue) vs Apr 2019 (Green) Westbound Average Speed 2200 to 2300



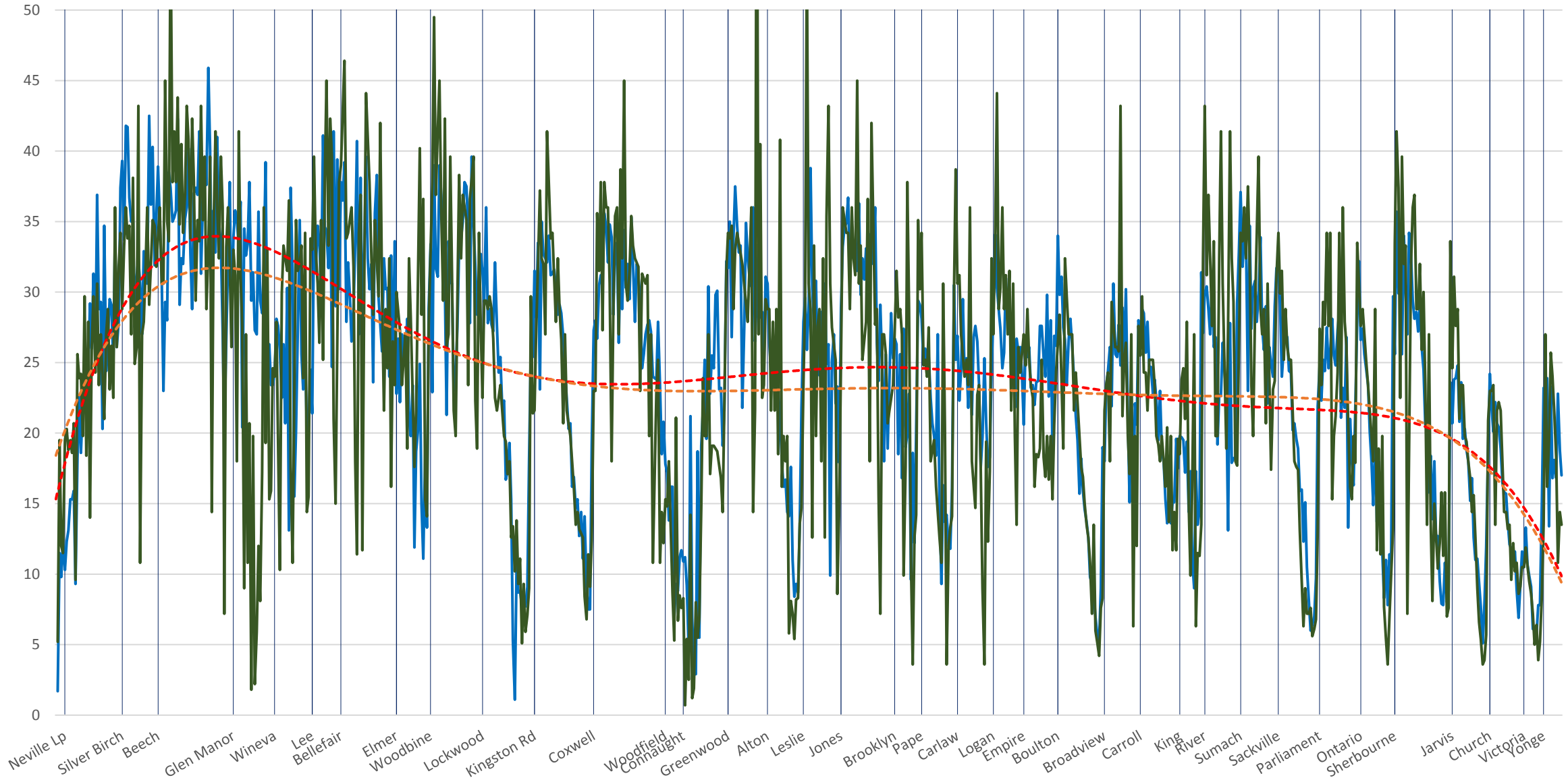
Locations 501 Queen Apr 2018 Apr 2019 Poly. (501 Queen Apr 2018) Poly. (Apr 2019)

501 Queen Apr 2018 (Blue) vs Apr 2019 (Green) Westbound Average Speed 2300 to 2400



Locations 501 Queen Apr 2018 Apr 2019 Poly. (501 Queen Apr 2018) Poly. (Apr 2019)

501 Queen Apr 2018 (Blue) vs Apr 2019 (Green) Westbound Average Speed 2400 to 2500



Locations 501 Queen Apr 2018 Apr 2019 Poly. (501 Queen Apr 2018) Poly. (Apr 2019)