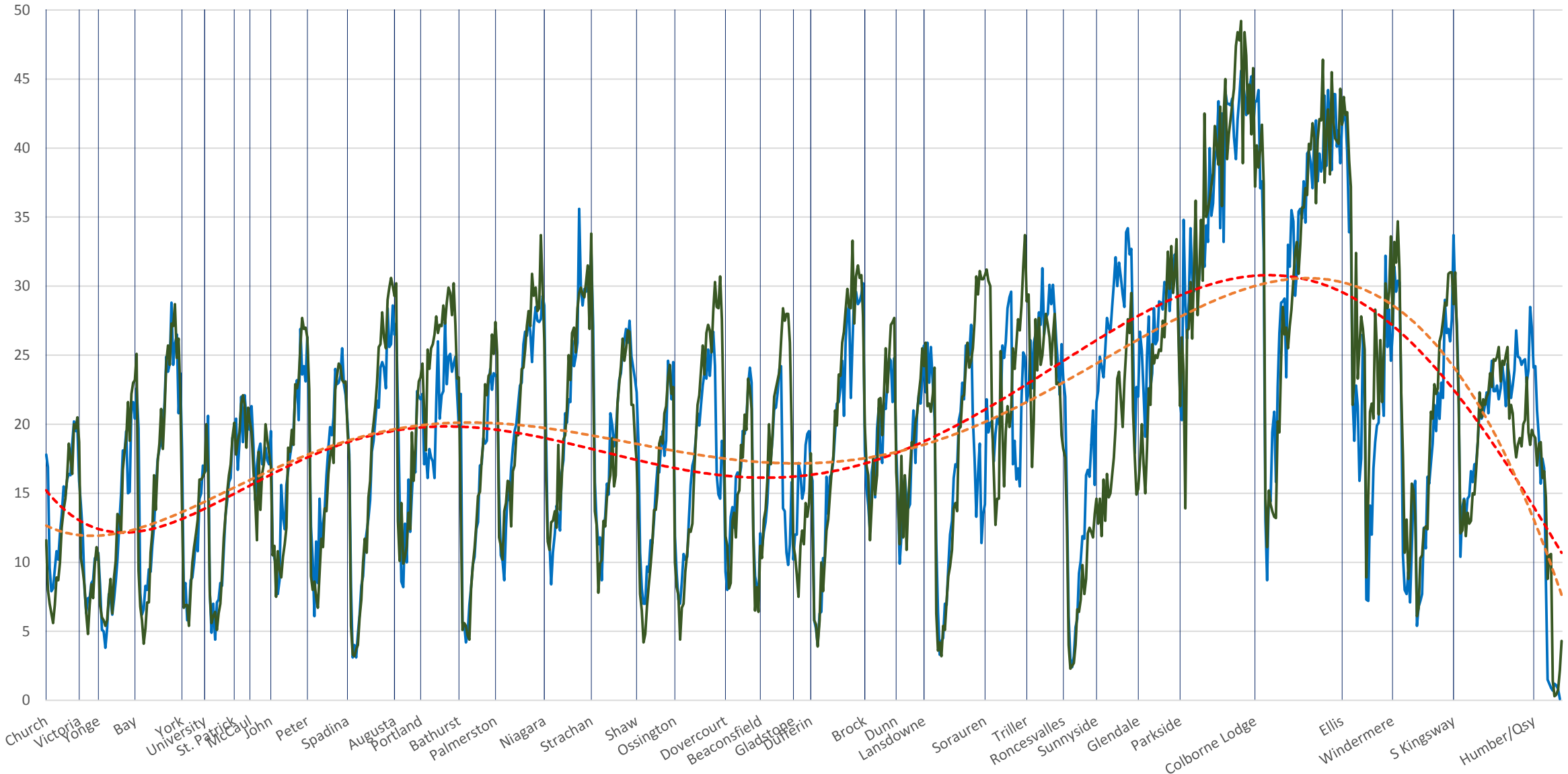
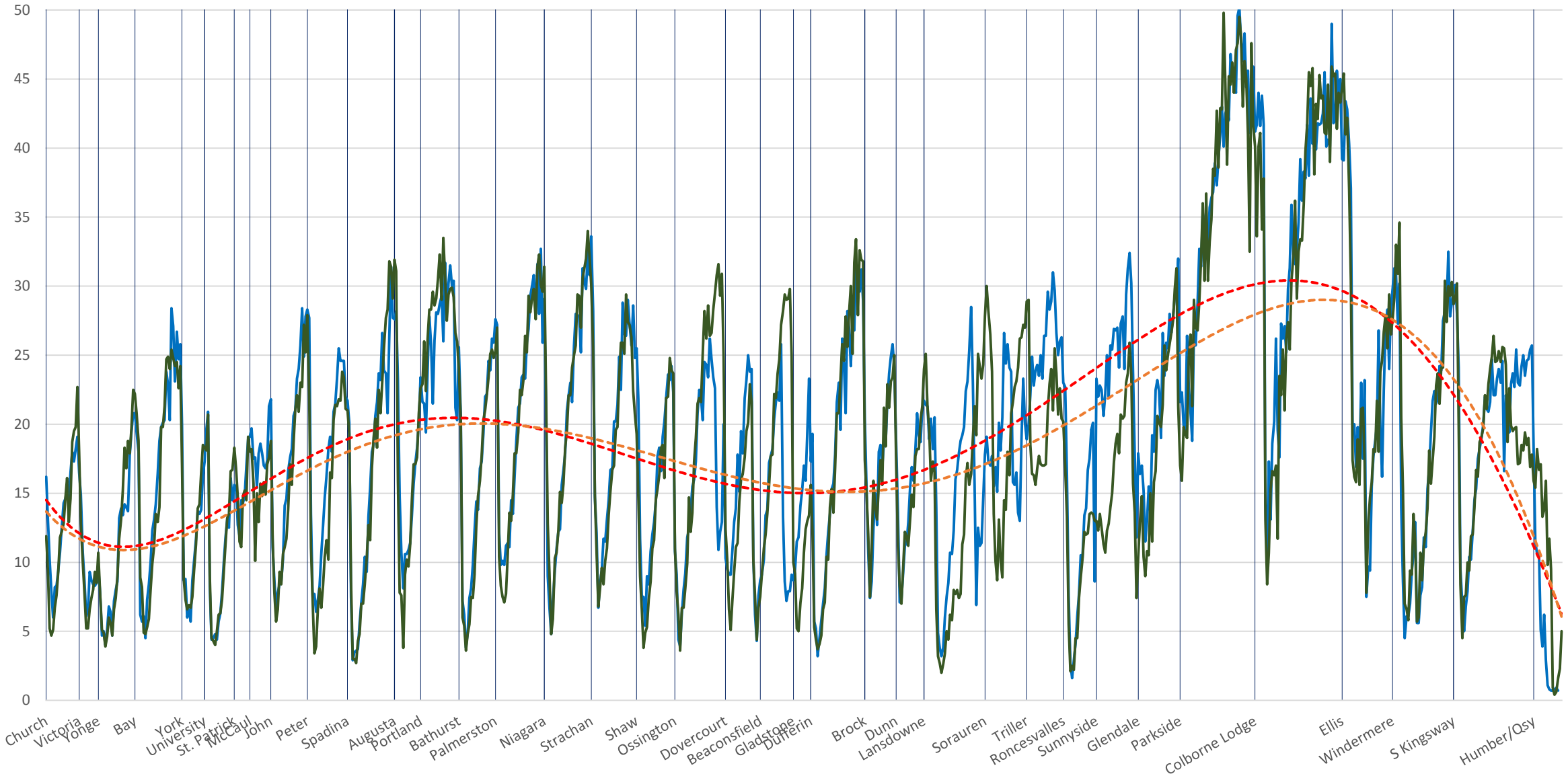


501 Queen Apr 2018 (Blue) vs Apr 2019 (Green) Eastbound Average Speed 600 to 700



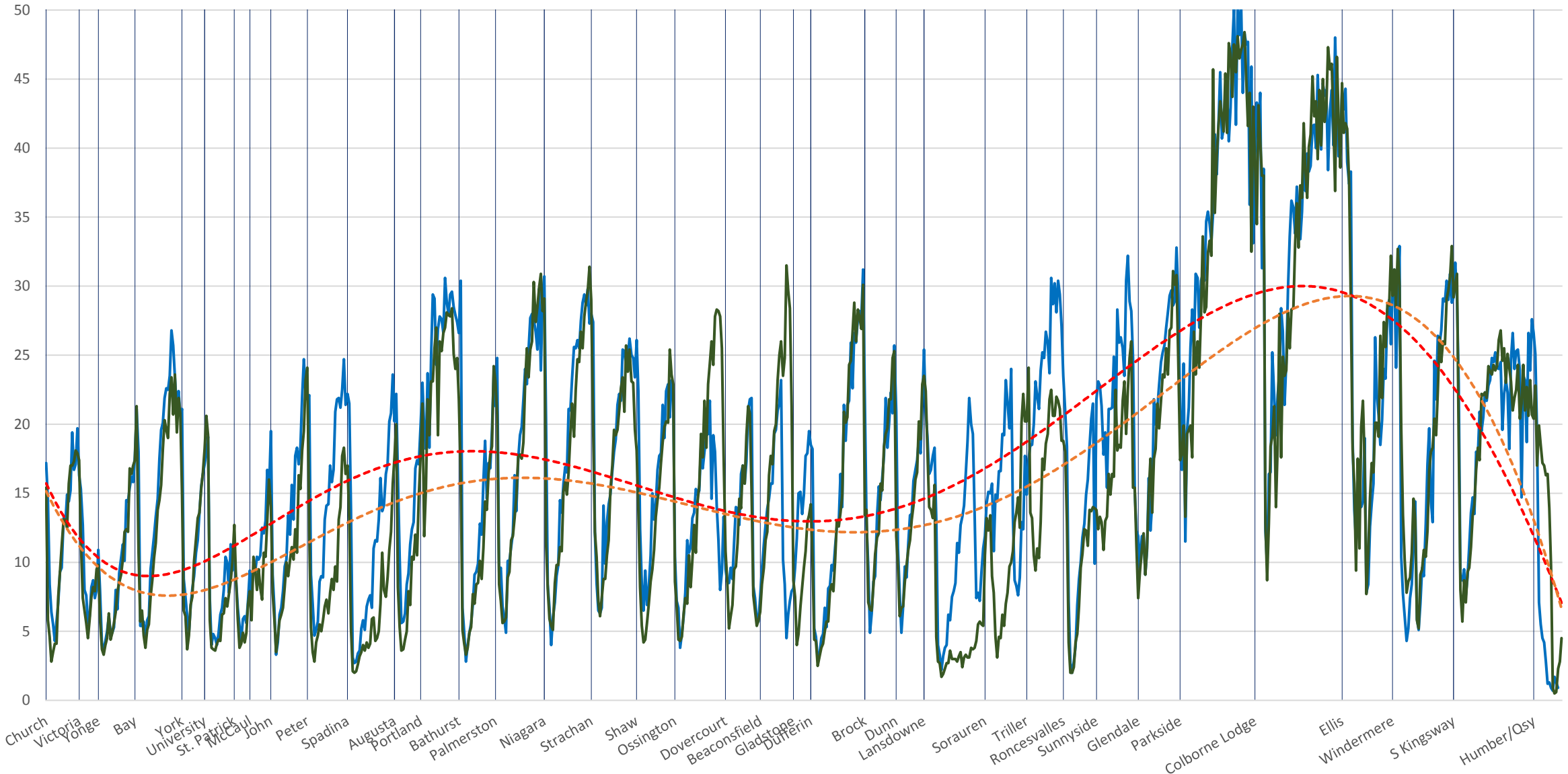
█ 501 Queen Apr 2018
 █ Apr 2019
 - - - Poly. (501 Queen Apr 2018)
 - - - Poly. (Apr 2019)

501 Queen Apr 2018 (Blue) vs Apr 2019 (Green) Eastbound Average Speed 700 to 800



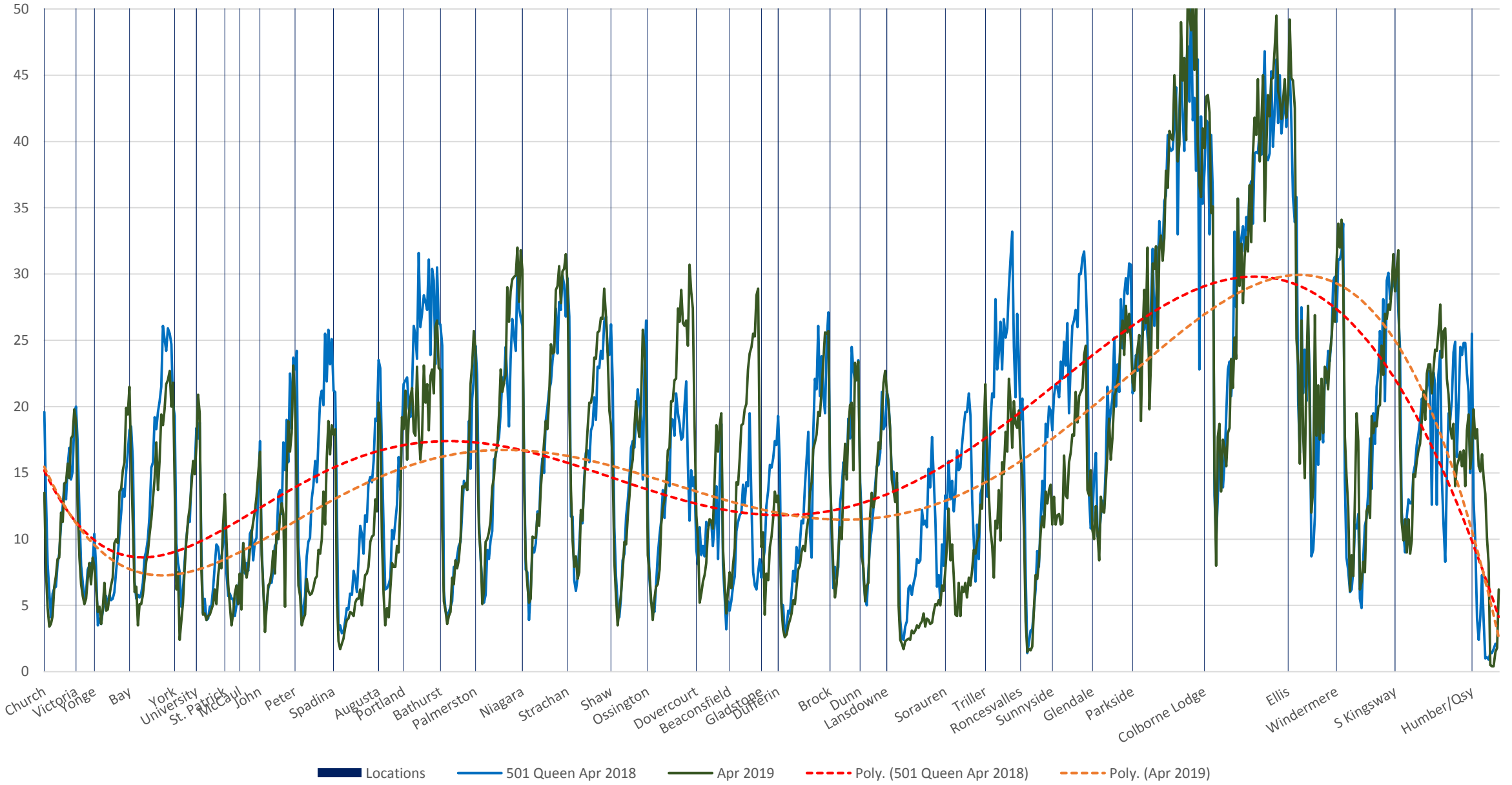
Locations 501 Queen Apr 2018 Apr 2019 Poly. (501 Queen Apr 2018) Poly. (Apr 2019)

501 Queen Apr 2018 (Blue) vs Apr 2019 (Green) Eastbound Average Speed 800 to 900

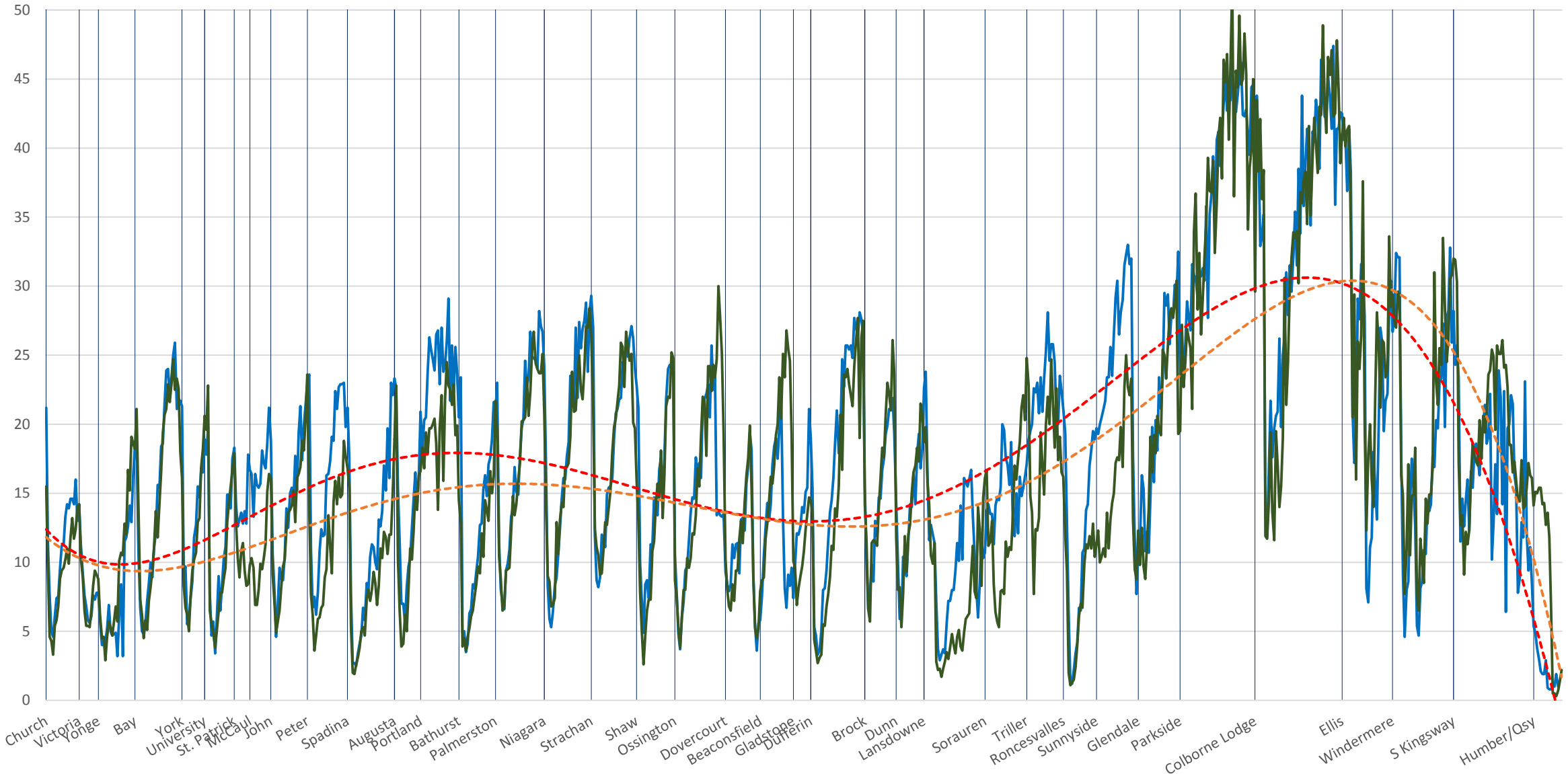


Locations 501 Queen Apr 2018 Apr 2019 Poly. (501 Queen Apr 2018) Poly. (Apr 2019)

501 Queen Apr 2018 (Blue) vs Apr 2019 (Green) Eastbound Average Speed 900 to 1000

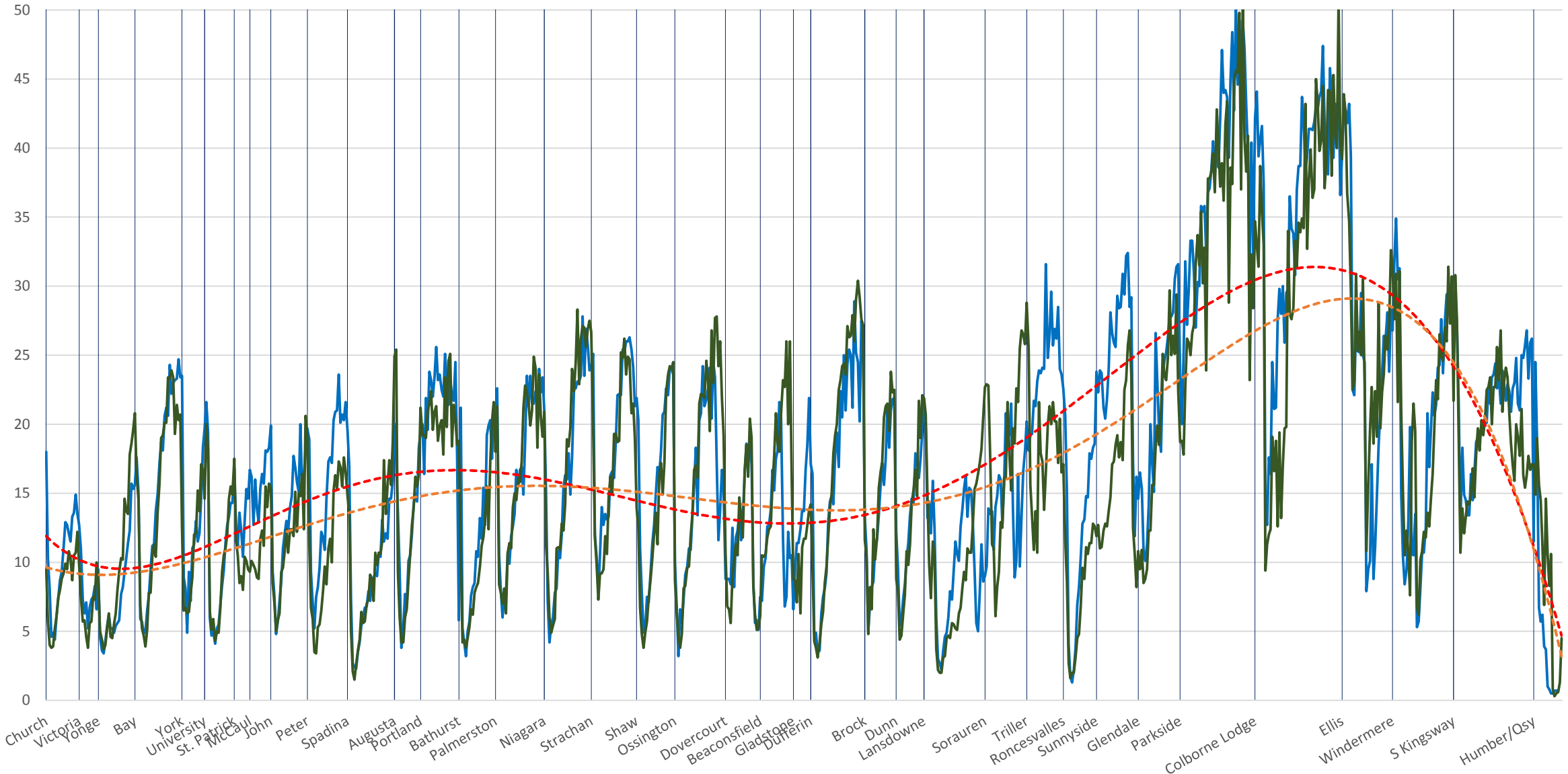


501 Queen Apr 2018 (Blue) vs Apr 2019 (Green) Eastbound Average Speed 1000 to 1100



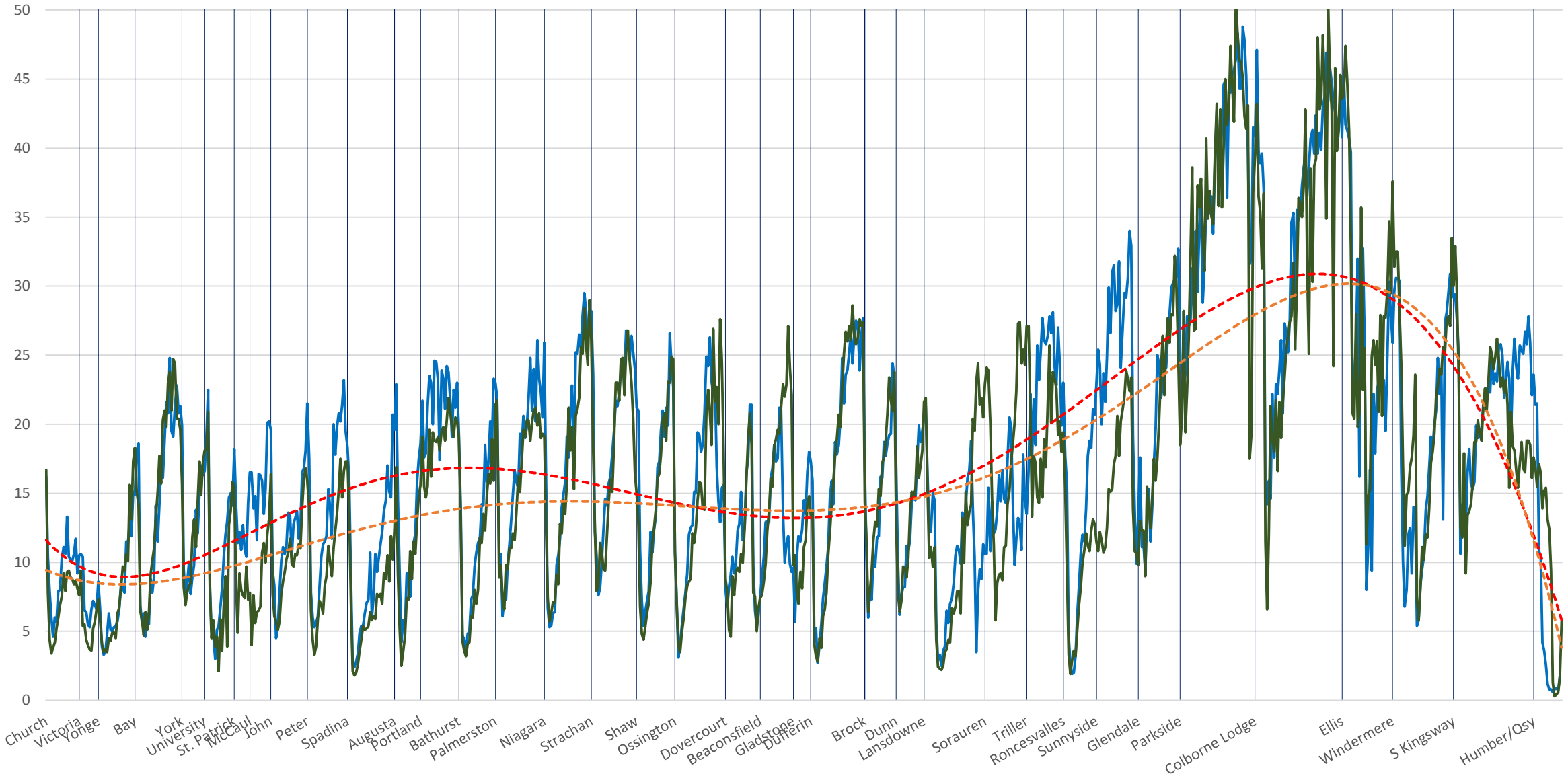
Locations
 501 Queen Apr 2018
 Apr 2019
 Poly. (501 Queen Apr 2018)
 Poly. (Apr 2019)

501 Queen Apr 2018 (Blue) vs Apr 2019 (Green) Eastbound Average Speed 1100 to 1200



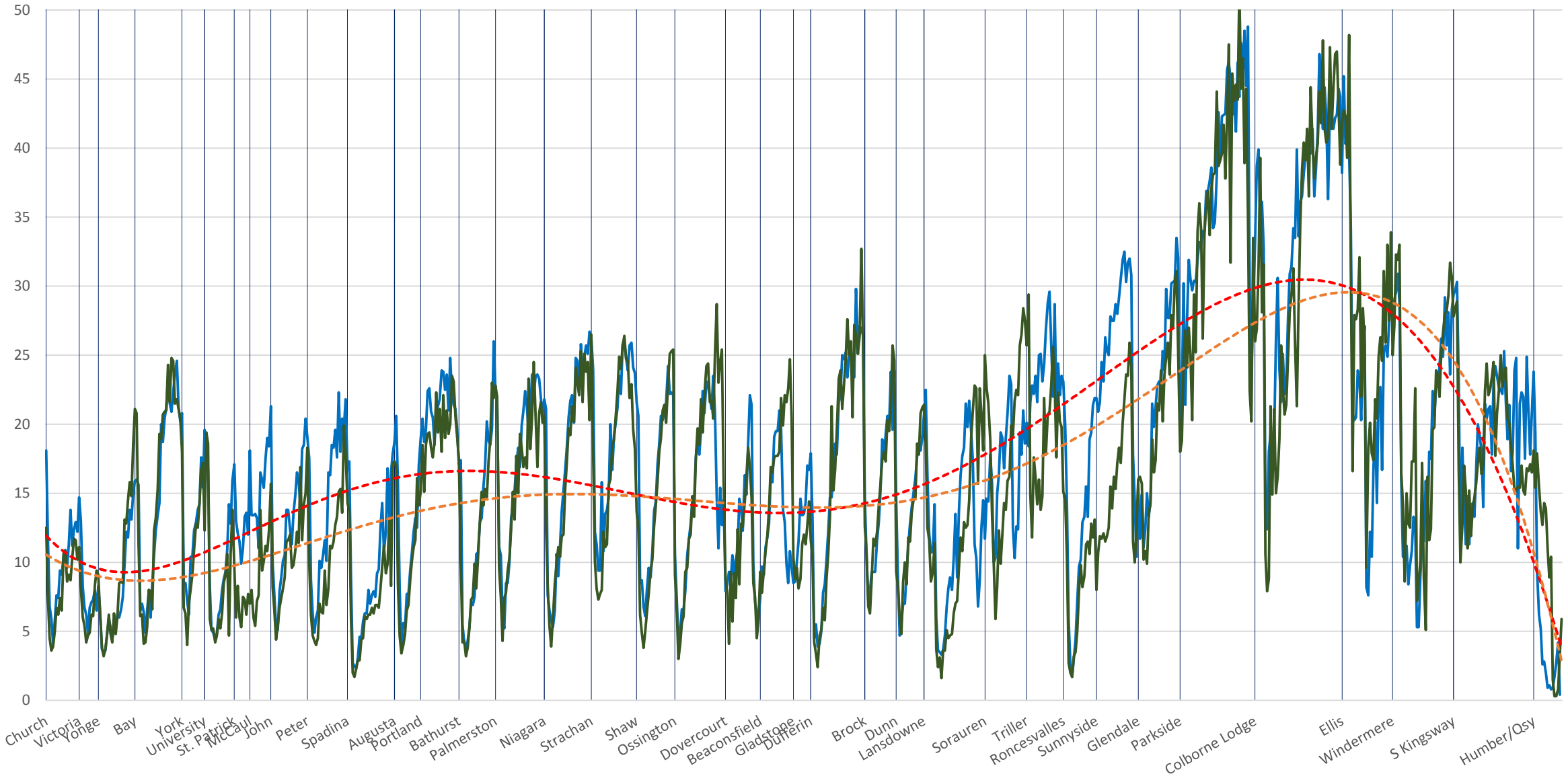
Locations
 501 Queen Apr 2018
 Apr 2019
 Poly. (501 Queen Apr 2018)
 Poly. (Apr 2019)

501 Queen Apr 2018 (Blue) vs Apr 2019 (Green) Eastbound Average Speed 1200 to 1300



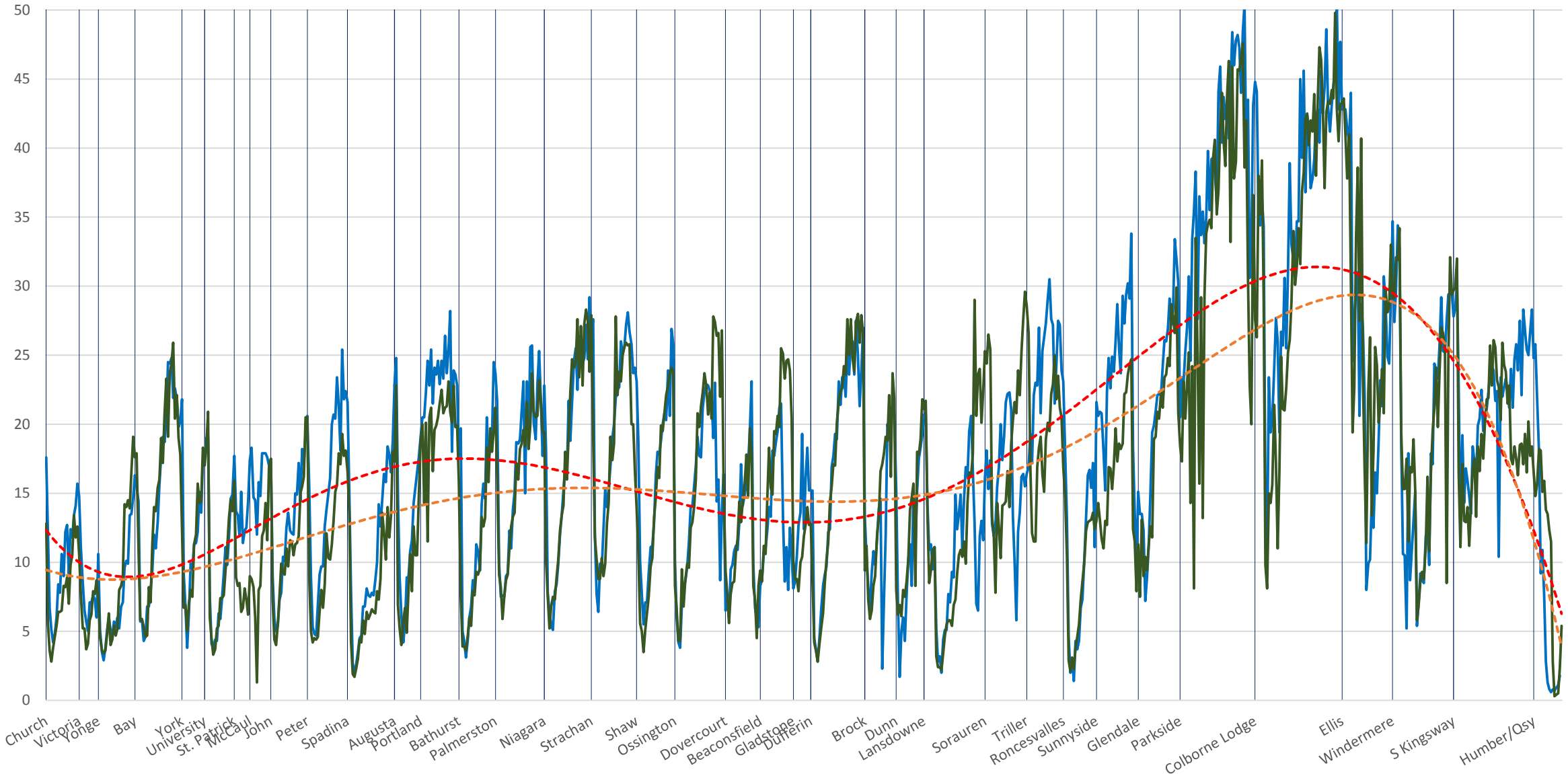
Locations 501 Queen Apr 2018 Apr 2019 Poly. (501 Queen Apr 2018) Poly. (Apr 2019)

501 Queen Apr 2018 (Blue) vs Apr 2019 (Green) Eastbound Average Speed 1300 to 1400



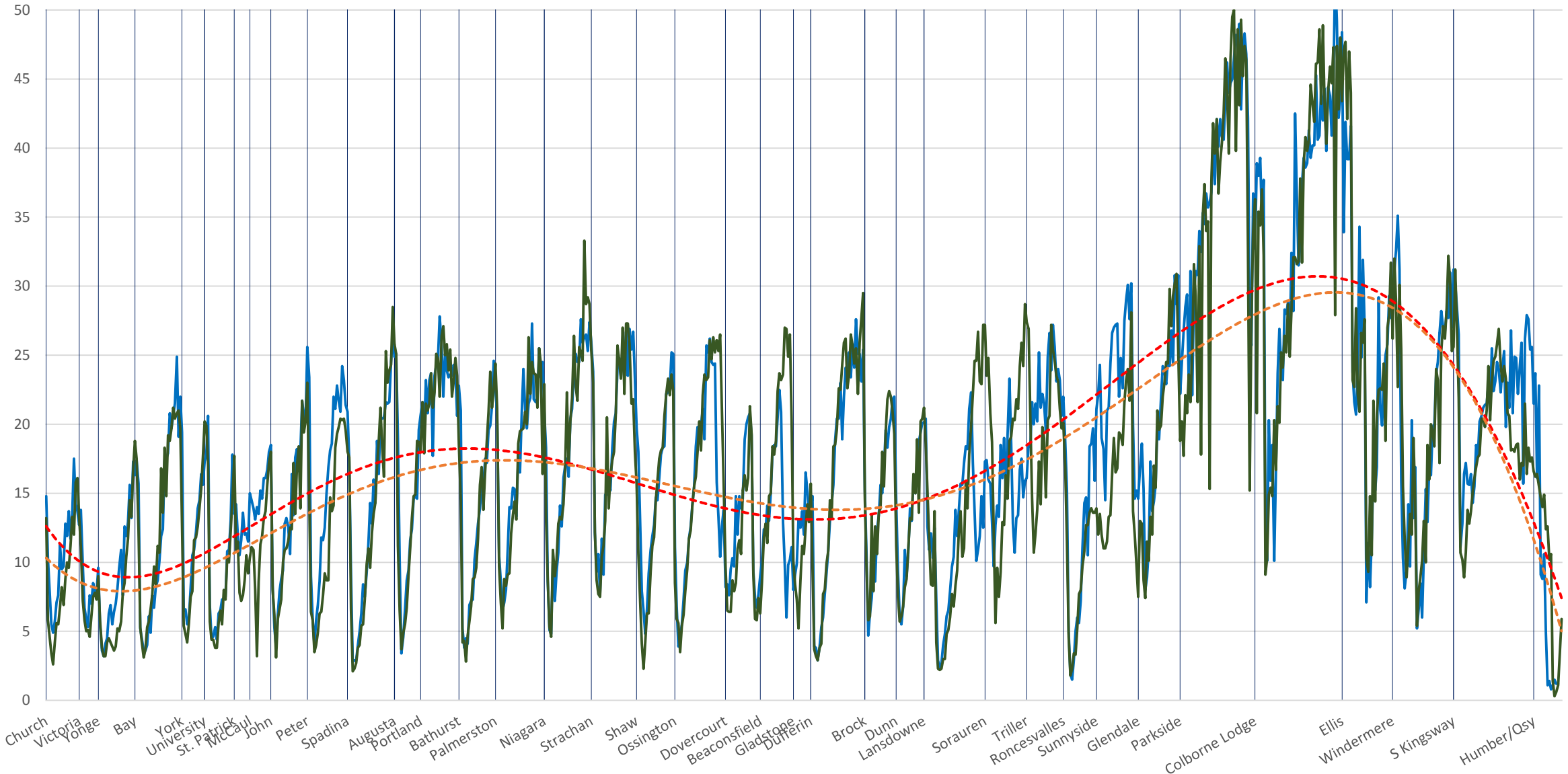
Locations
 501 Queen Apr 2018
 Apr 2019
 Poly. (501 Queen Apr 2018)
 Poly. (Apr 2019)

501 Queen Apr 2018 (Blue) vs Apr 2019 (Green) Eastbound Average Speed 1400 to 1500



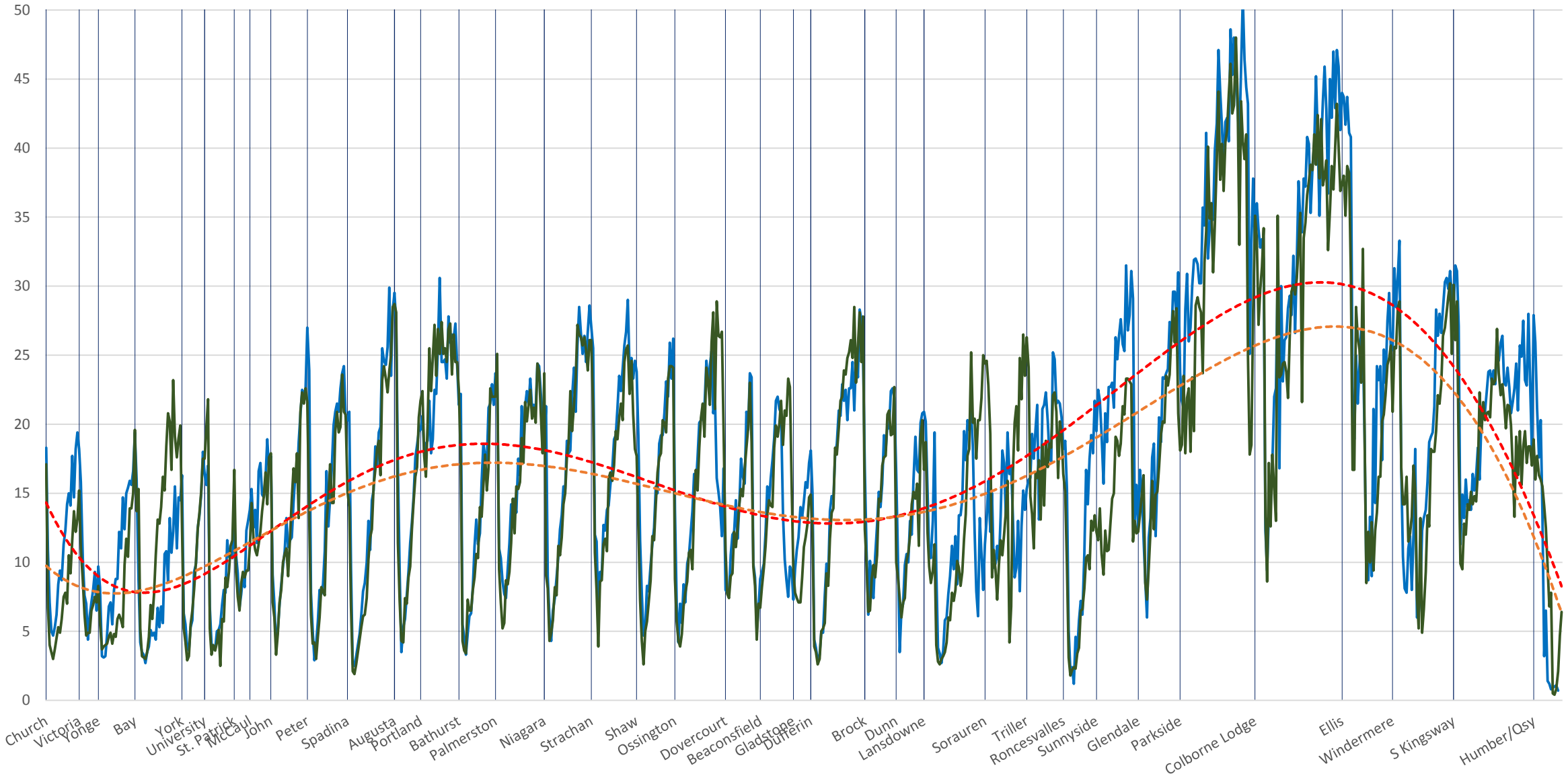
█ 501 Queen Apr 2018
 █ Apr 2019
 - - - Poly. (501 Queen Apr 2018)
 - - - Poly. (Apr 2019)

501 Queen Apr 2018 (Blue) vs Apr 2019 (Green) Eastbound Average Speed 1500 to 1600



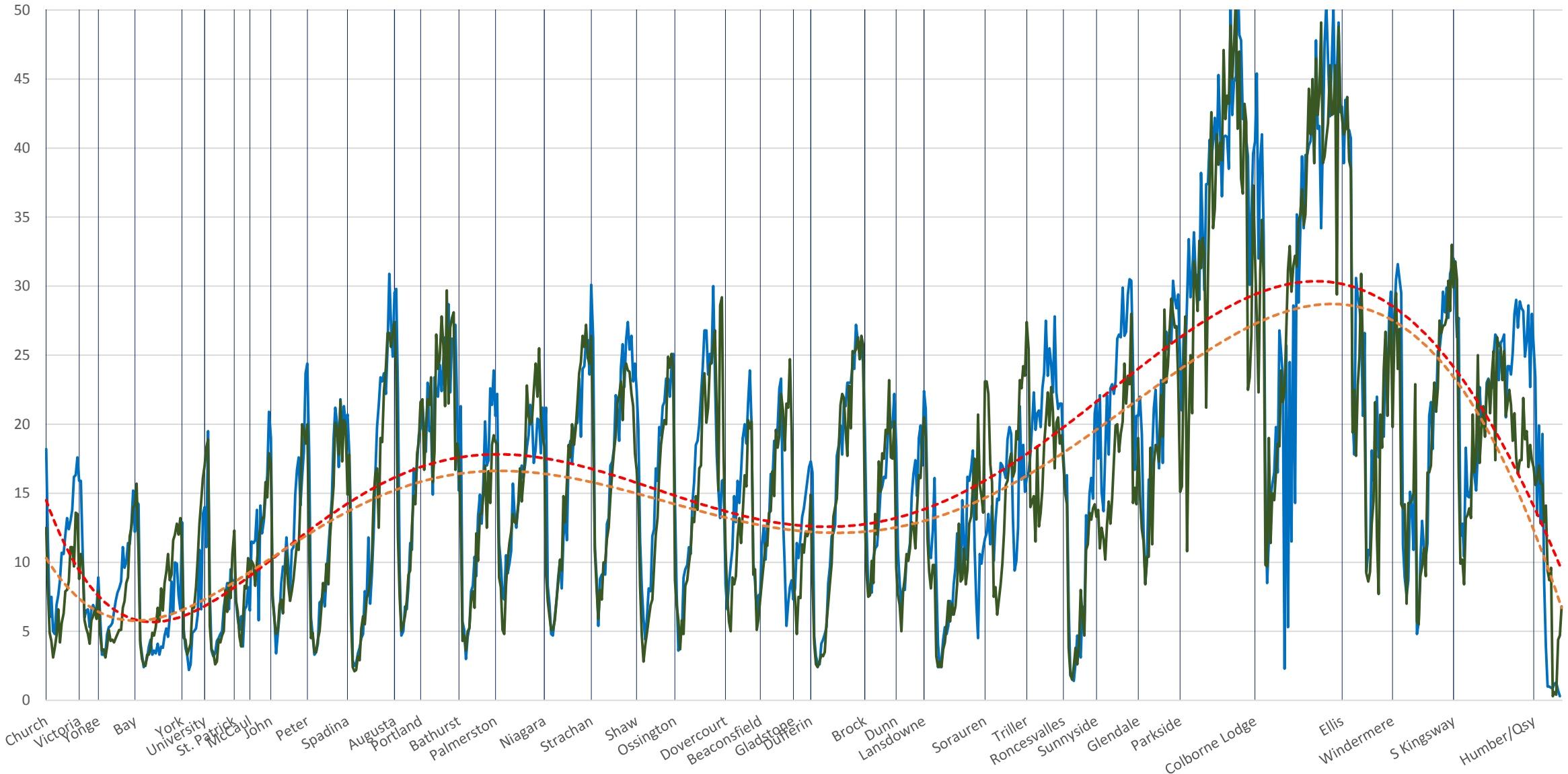
Locations 501 Queen Apr 2018 Apr 2019 Poly. (501 Queen Apr 2018) Poly. (Apr 2019)

501 Queen Apr 2018 (Blue) vs Apr 2019 (Green) Eastbound Average Speed 1600 to 1700



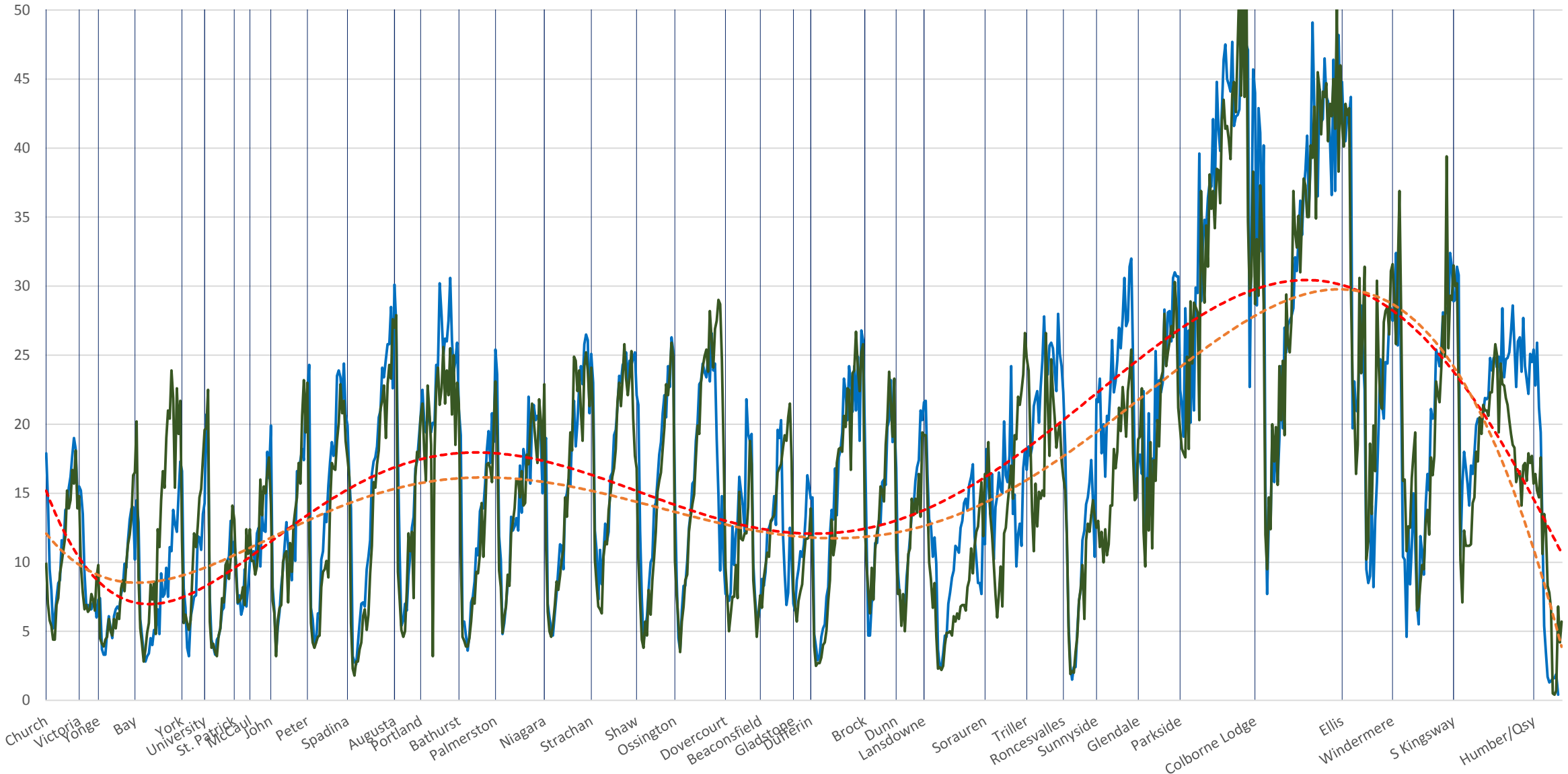
Locations
 501 Queen Apr 2018
 Apr 2019
 Poly. (501 Queen Apr 2018)
 Poly. (Apr 2019)

501 Queen Apr 2018 (Blue) vs Apr 2019 (Green) Eastbound Average Speed 1700 to 1800



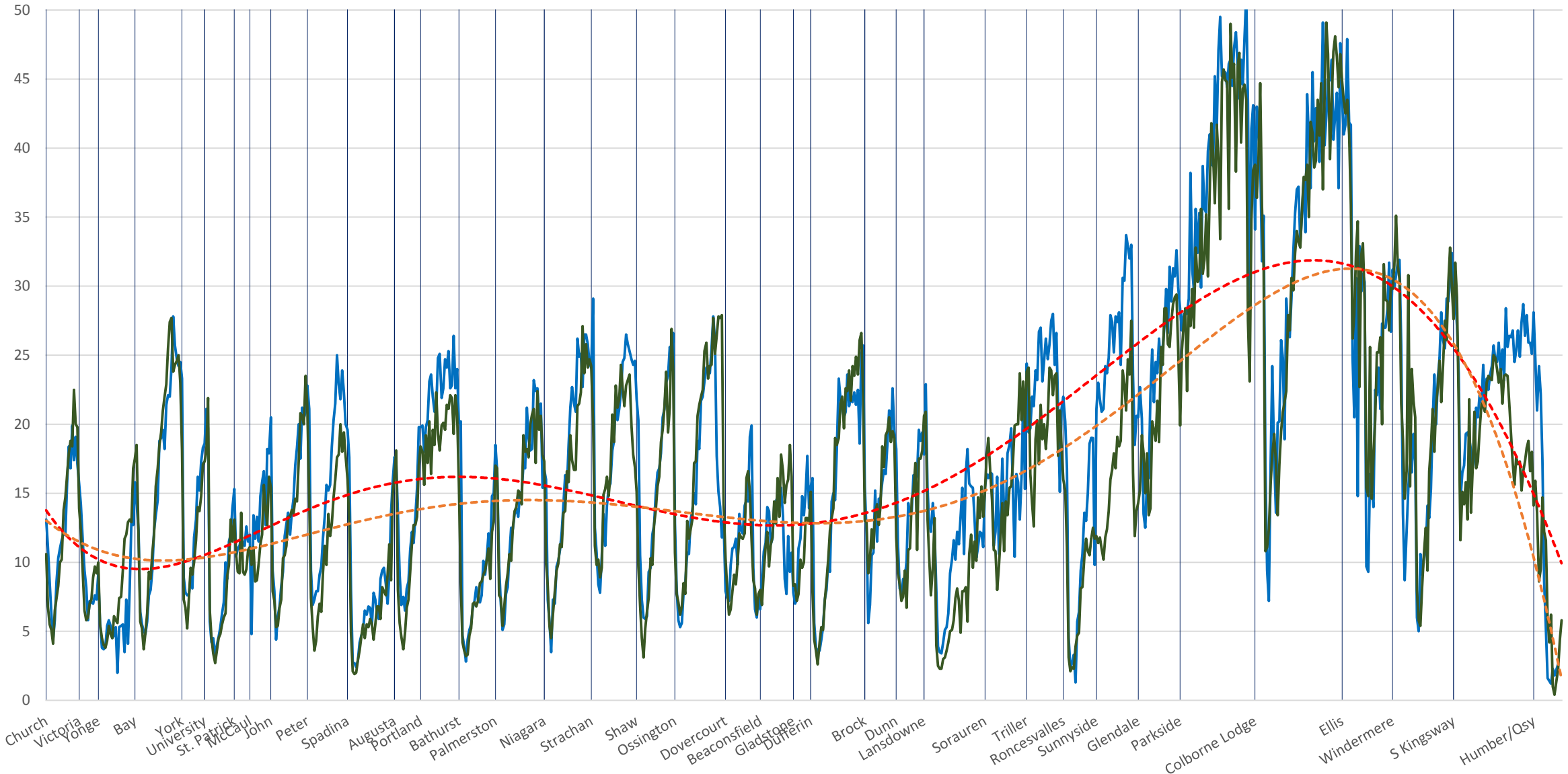
Locations 501 Queen Apr 2018 Apr 2019 Poly. (501 Queen Apr 2018) Poly. (Apr 2019)

501 Queen Apr 2018 (Blue) vs Apr 2019 (Green) Eastbound Average Speed 1800 to 1900



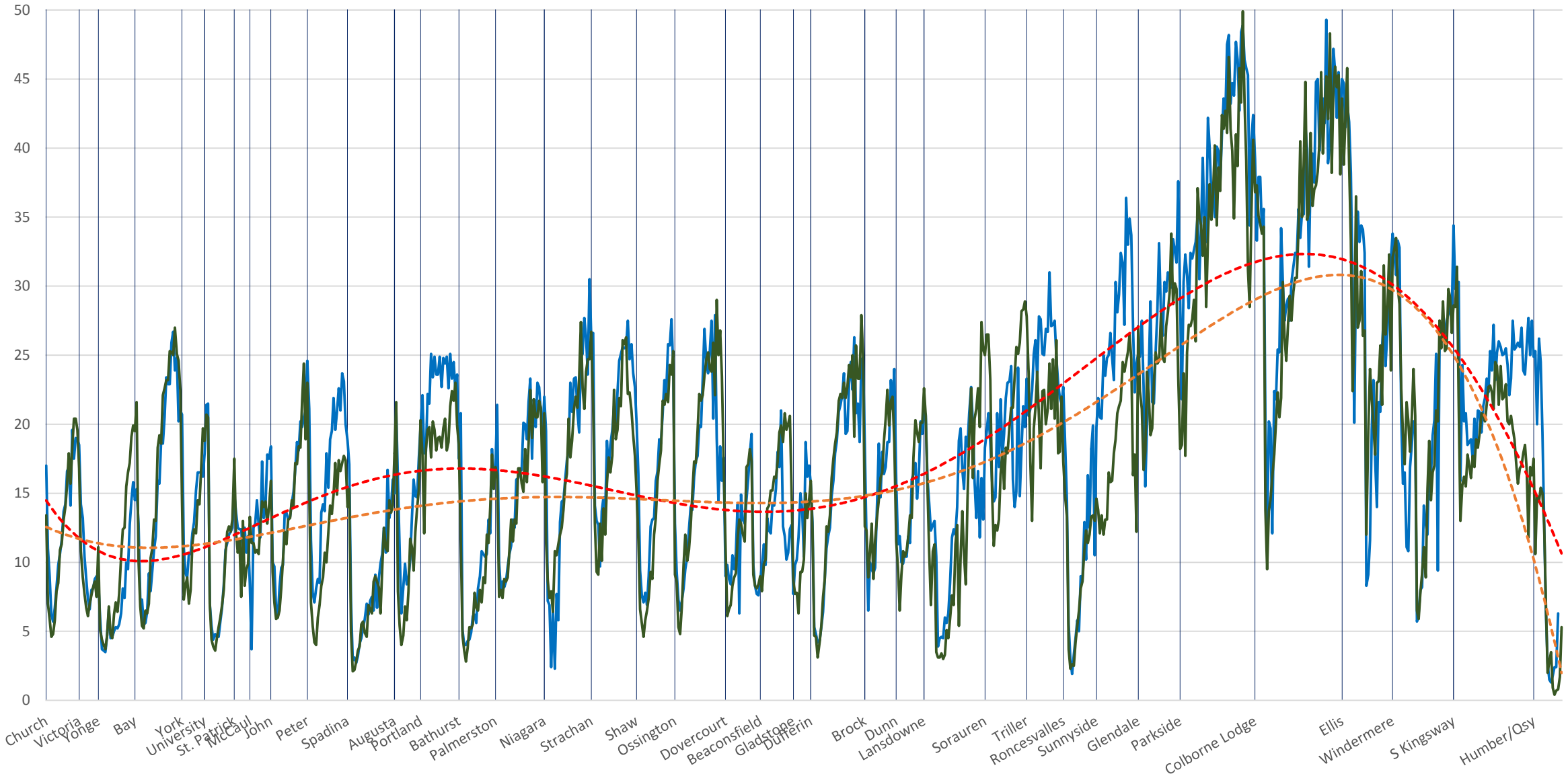
Locations
 501 Queen Apr 2018
 Apr 2019
 Poly. (501 Queen Apr 2018)
 Poly. (Apr 2019)

501 Queen Apr 2018 (Blue) vs Apr 2019 (Green) Eastbound Average Speed 1900 to 2000



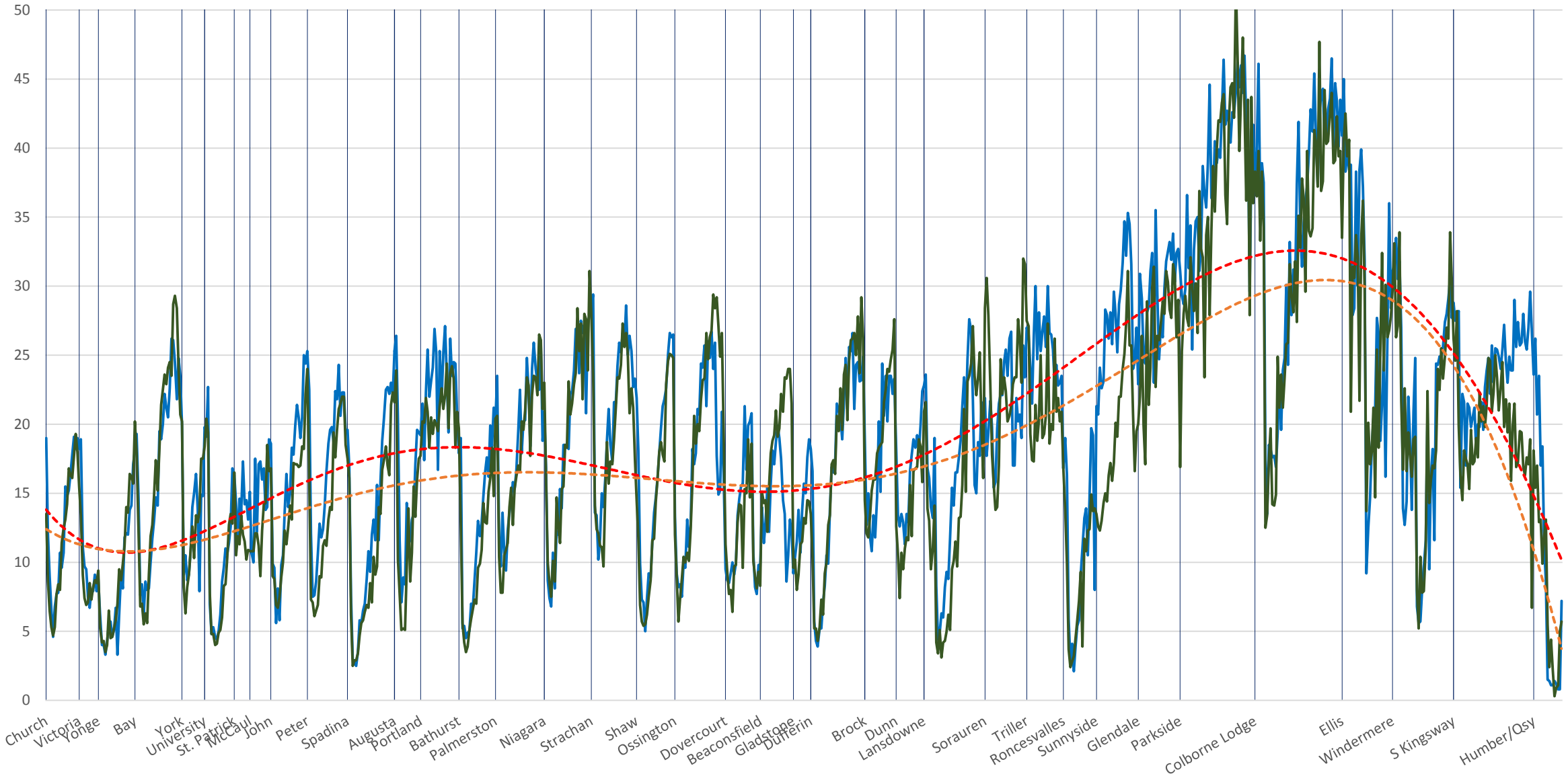
Locations
 501 Queen Apr 2018
 Apr 2019
 Poly. (501 Queen Apr 2018)
 Poly. (Apr 2019)

501 Queen Apr 2018 (Blue) vs Apr 2019 (Green) Eastbound Average Speed 2000 to 2100



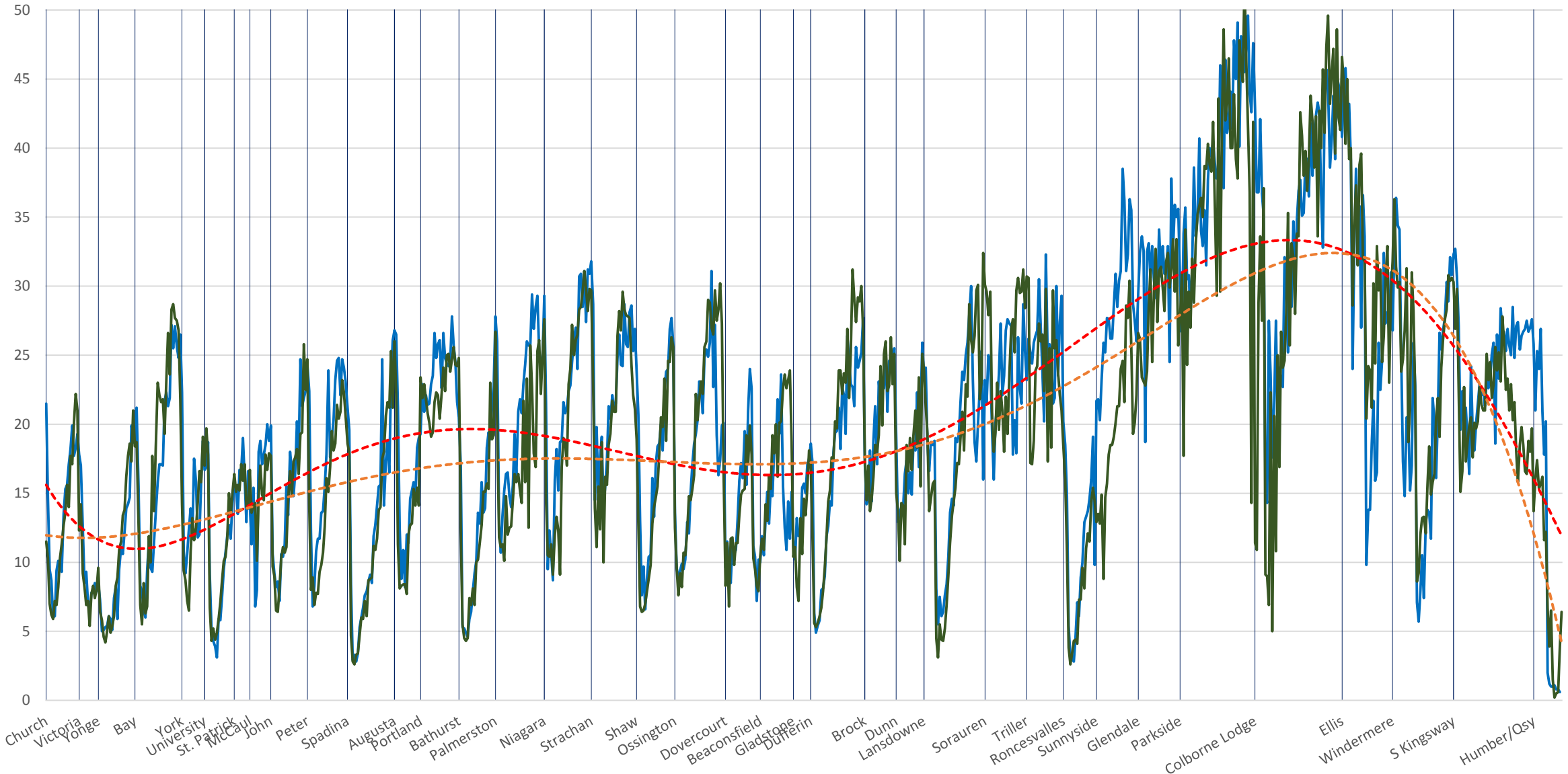
█ Locations
 — 501 Queen Apr 2018
 — Apr 2019
 - - - Poly. (501 Queen Apr 2018)
 - - - Poly. (Apr 2019)

501 Queen Apr 2018 (Blue) vs Apr 2019 (Green) Eastbound Average Speed 2100 to 2200



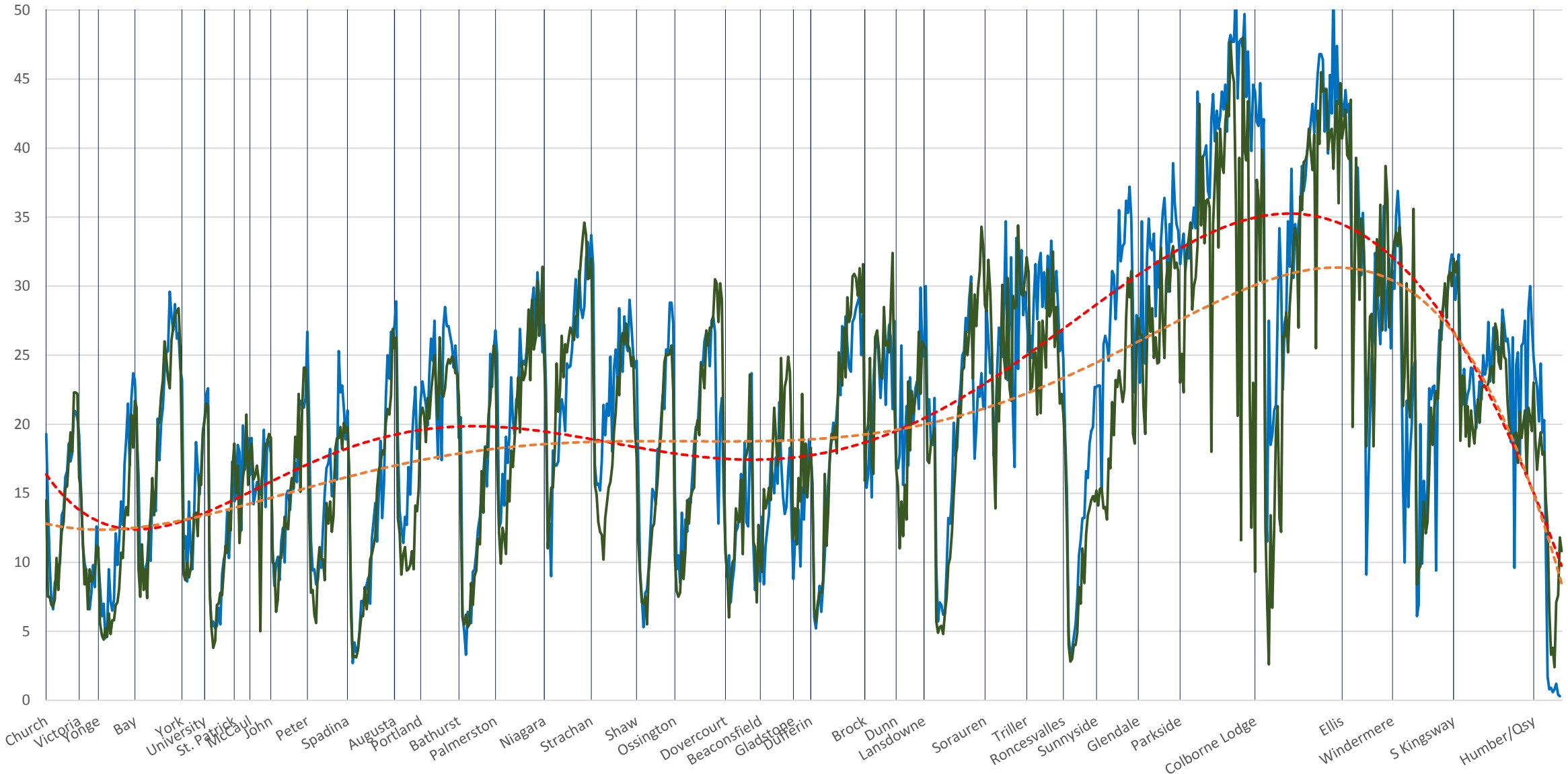
█ Locations
 — 501 Queen Apr 2018
 — Apr 2019
 - - - Poly. (501 Queen Apr 2018)
 - - - Poly. (Apr 2019)

501 Queen Apr 2018 (Blue) vs Apr 2019 (Green) Eastbound Average Speed 2200 to 2300



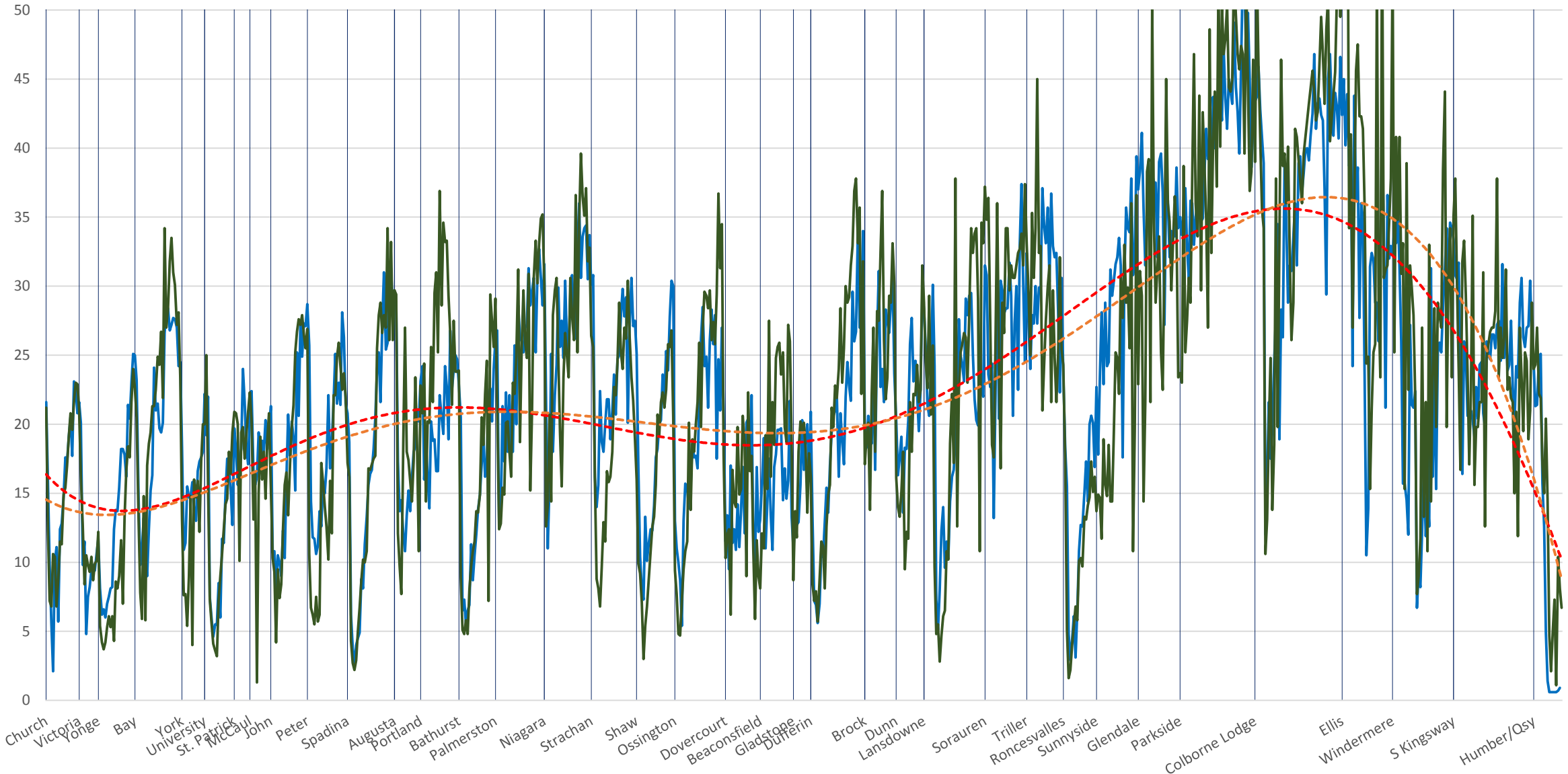
█ Locations
 — 501 Queen Apr 2018
 — Apr 2019
 - - - Poly. (501 Queen Apr 2018)
 - - - Poly. (Apr 2019)

501 Queen Apr 2018 (Blue) vs Apr 2019 (Green) Eastbound Average Speed 2300 to 2400



█ Locations
 — 501 Queen Apr 2018
 — Apr 2019
 - - - Poly. (501 Queen Apr 2018)
 - - - Poly. (Apr 2019)

501 Queen Apr 2018 (Blue) vs Apr 2019 (Green) Eastbound Average Speed 2400 to 2500



█ Locations
 — 501 Queen Apr 2018
 — Apr 2019
 - - - Poly. (501 Queen Apr 2018)
 - - - Poly. (Apr 2019)