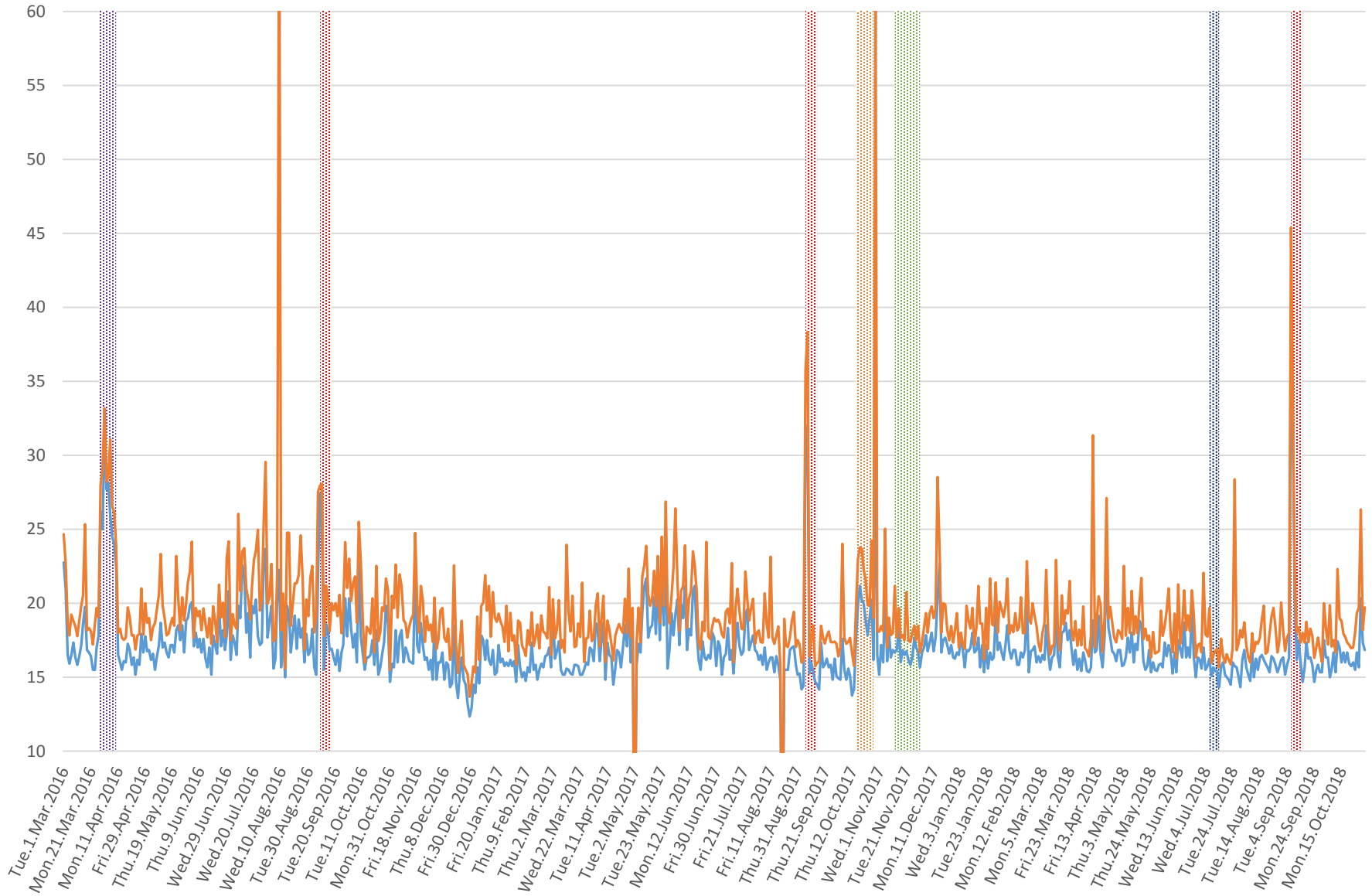
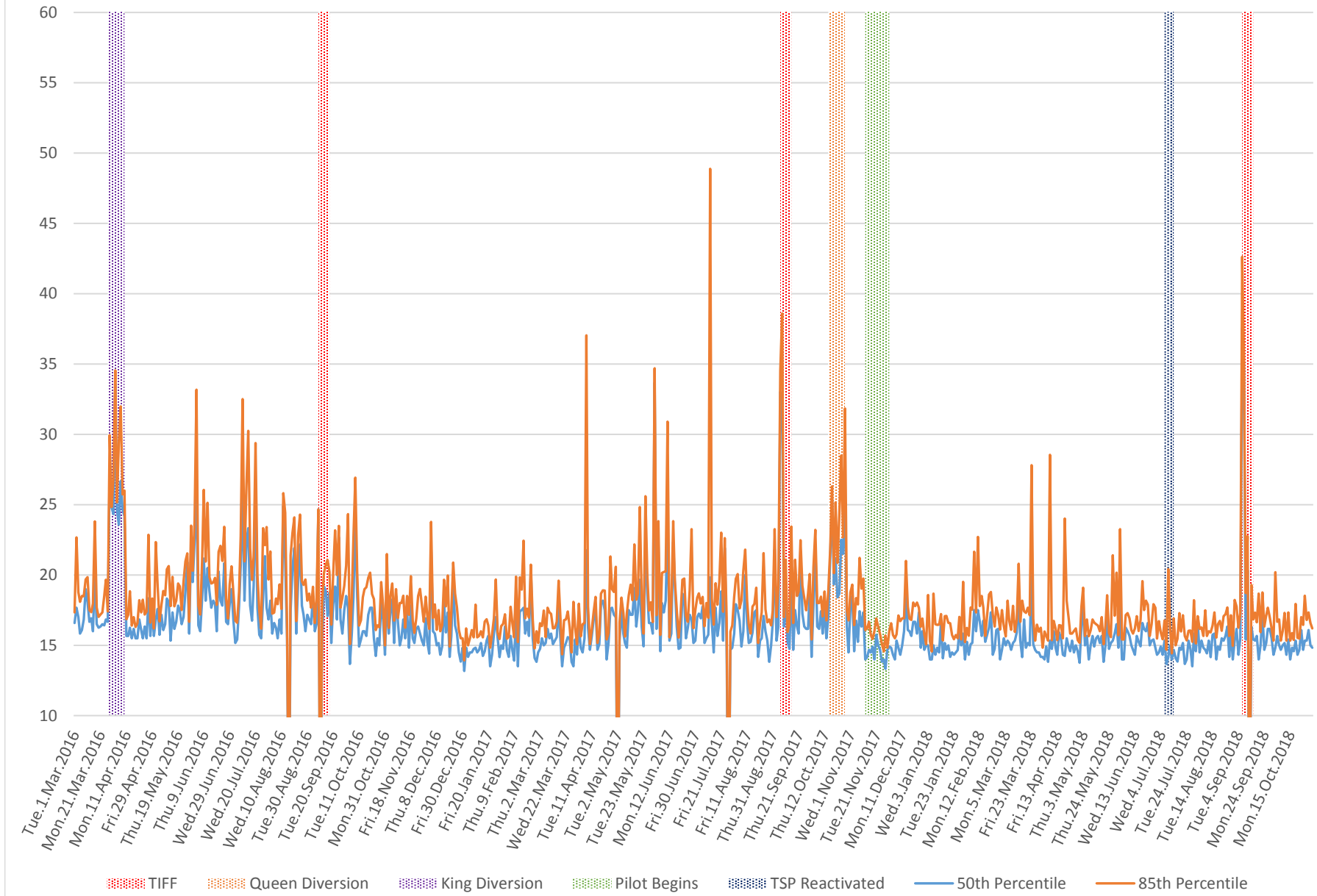


### 504 King Link Times From Jarvis To Bathurst Westbound 2016-2018 8 to 9 AM

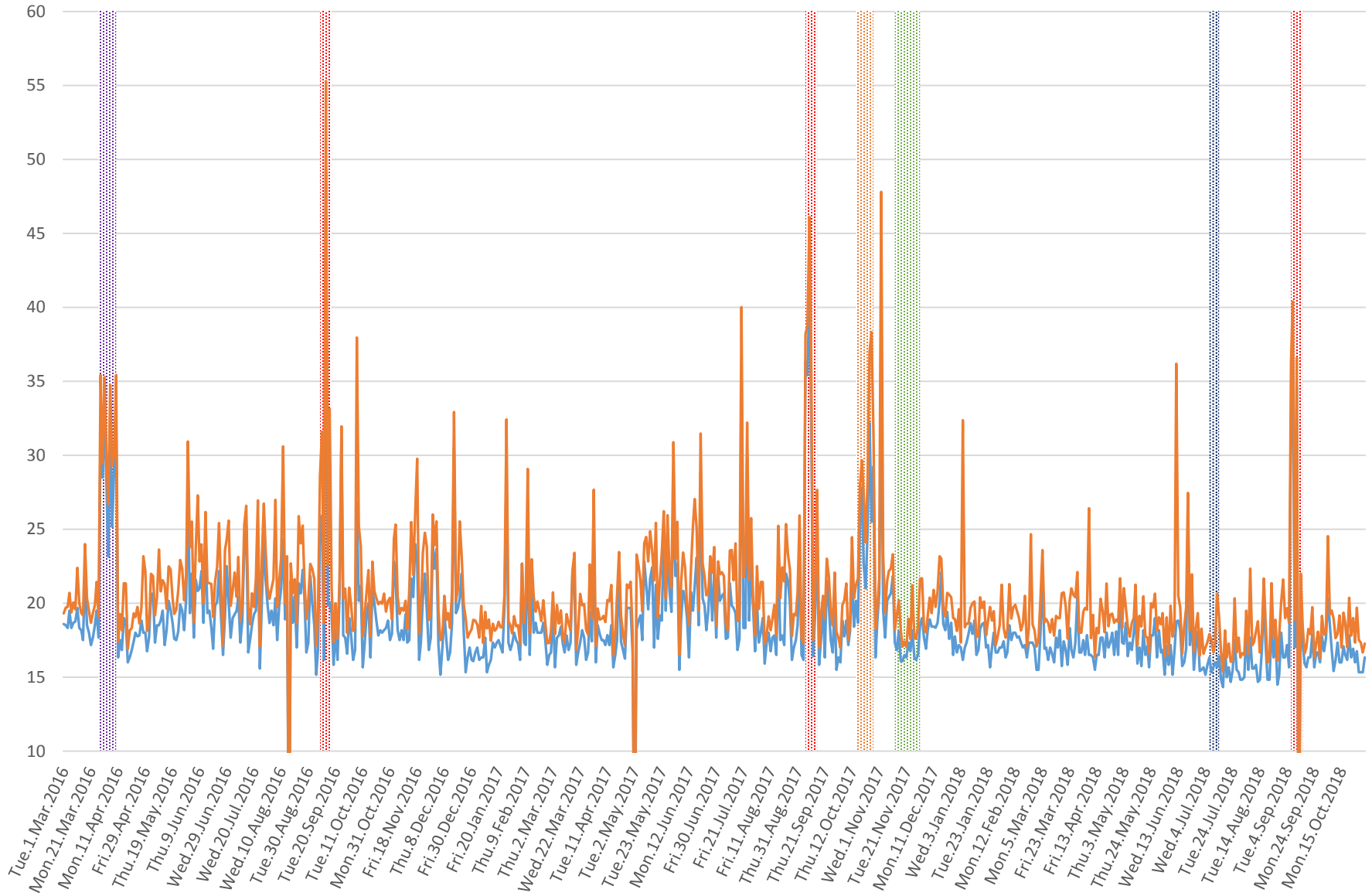


⋯ TIFF    
 ⋯ Queen Diversion    
 ⋯ King Diversion    
 ⋯ Pilot Begins    
 ⋯ TSP Reactivated    
 — 50th Percentile    
 — 85th Percentile

# 504 King Link Times From Jarvis To Bathurst Westbound 2016-2018 1 to 2 PM

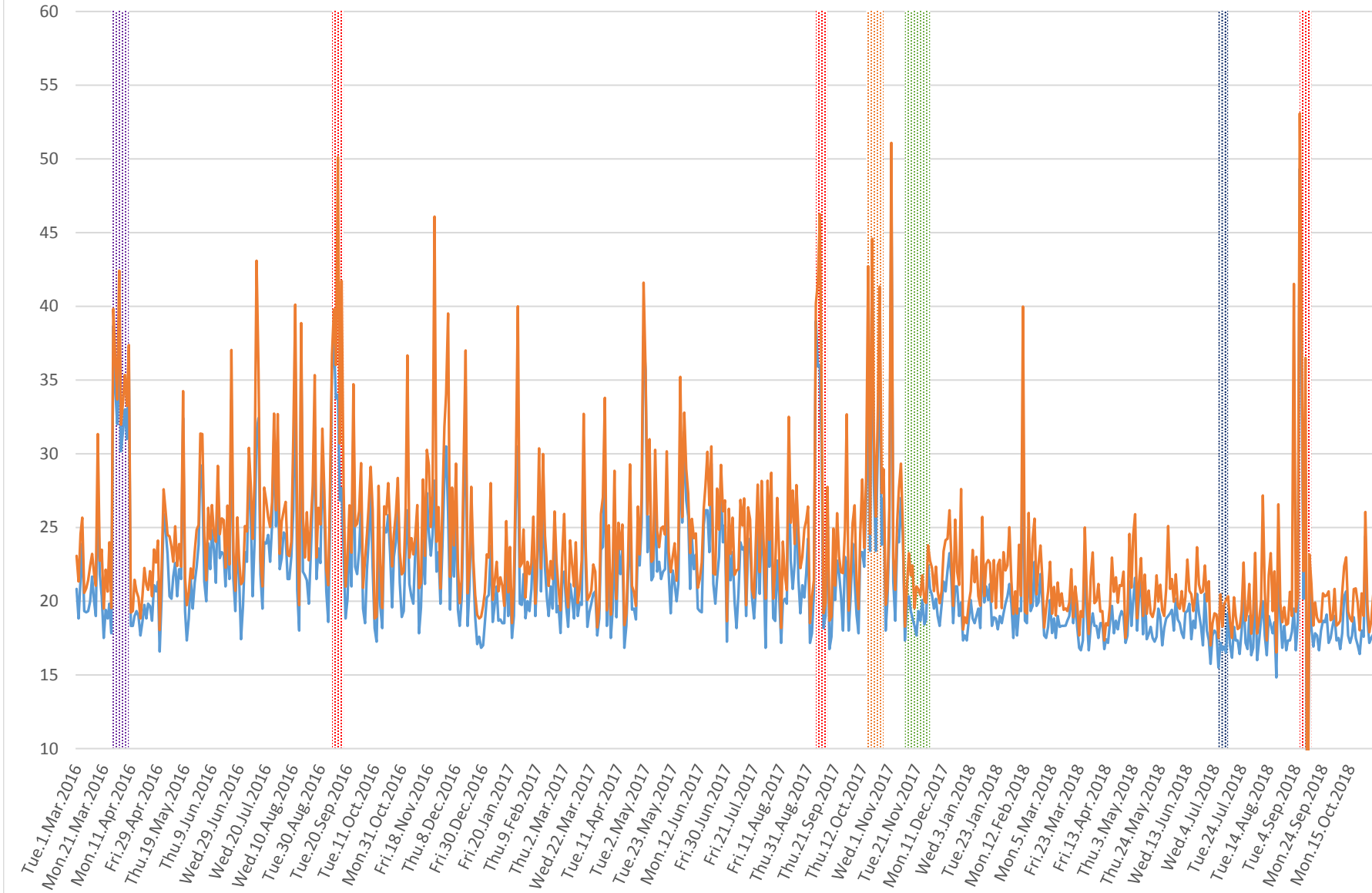


### 504 King Link Times From Jarvis To Bathurst Westbound 2016-2018 4 to 5 PM



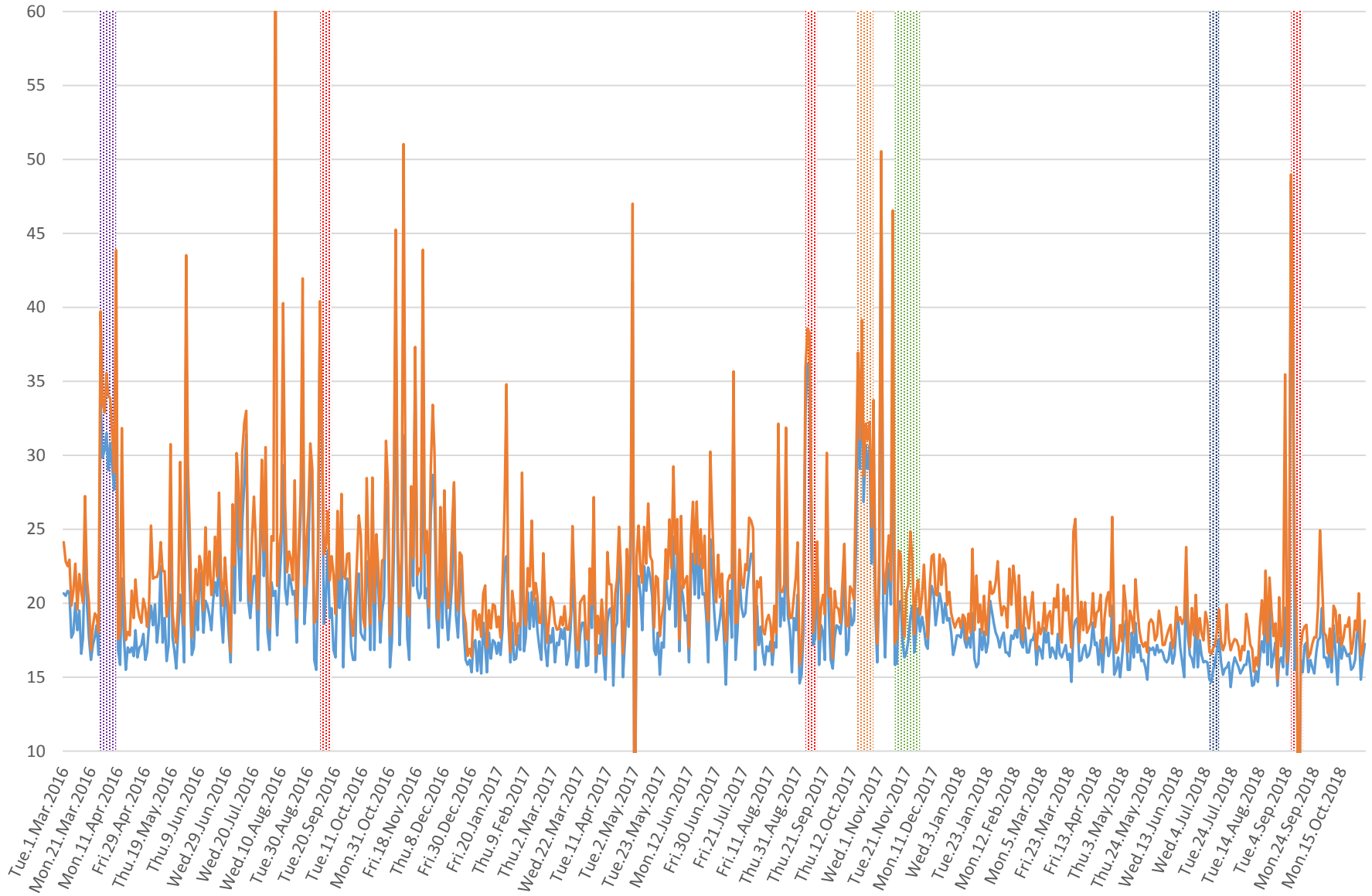
▨ TIFF   
 ▨ Queen Diversion   
 ▨ King Diversion   
 ▨ Pilot Begins   
 ▨ TSP Reactivated   
 — 50th Percentile   
 — 85th Percentile

# 504 King Link Times From Jarvis To Bathurst Westbound 2016-2018 5 to 6 PM



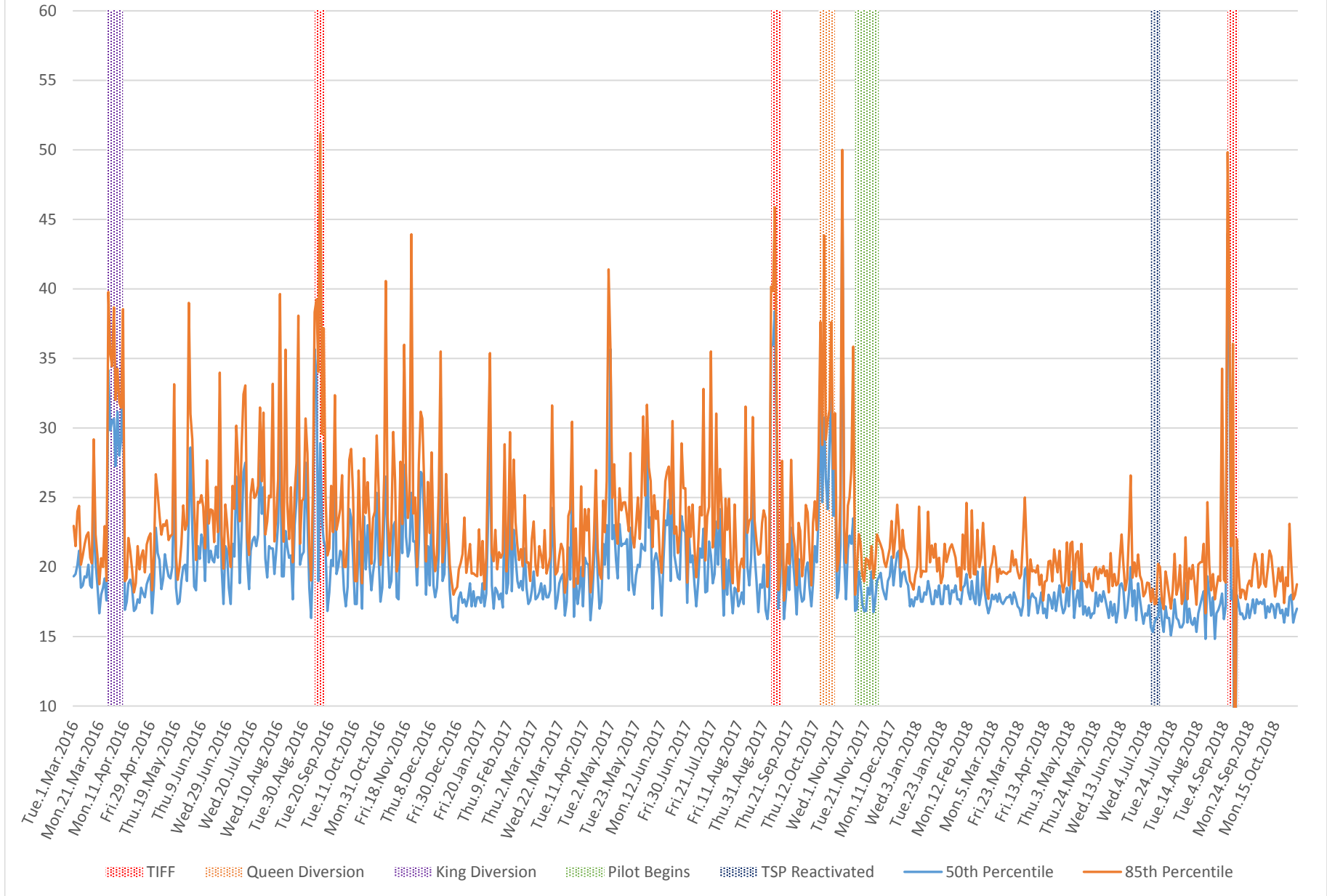
TIFF Queen Diversion King Diversion Pilot Begins TSP Reactivated 50th Percentile 85th Percentile

### 504 King Link Times From Jarvis To Bathurst Westbound 2016-2018 6 to 7 PM

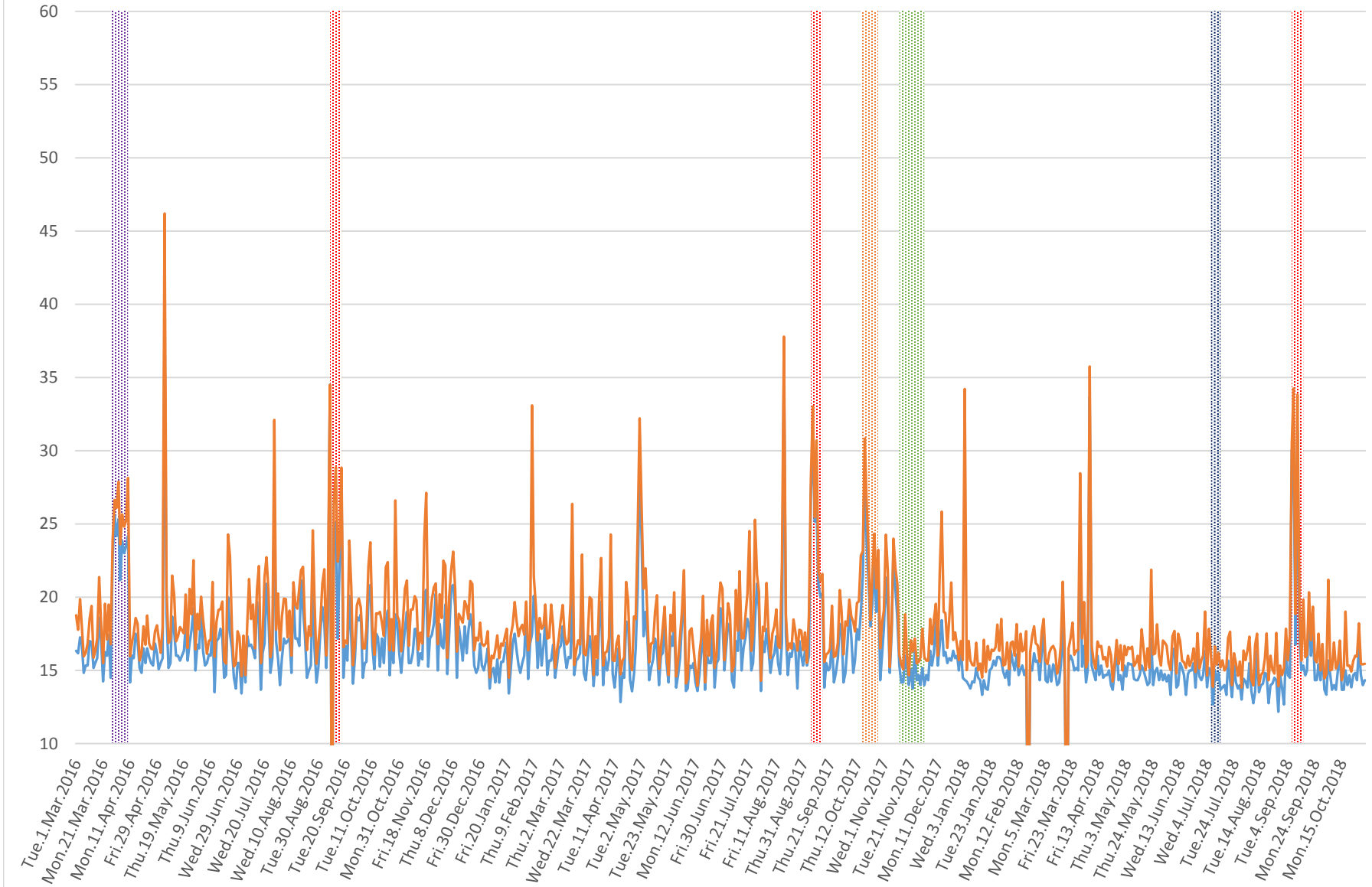


■ Tiff    
 ■ Queen Diversion    
 ■ King Diversion    
 ■ Pilot Begins    
 ■ TSP Reactivated    
 — 50th Percentile    
 — 85th Percentile

# 504 King Link Times From Jarvis To Bathurst Westbound 2016-2018 4 to 7 PM

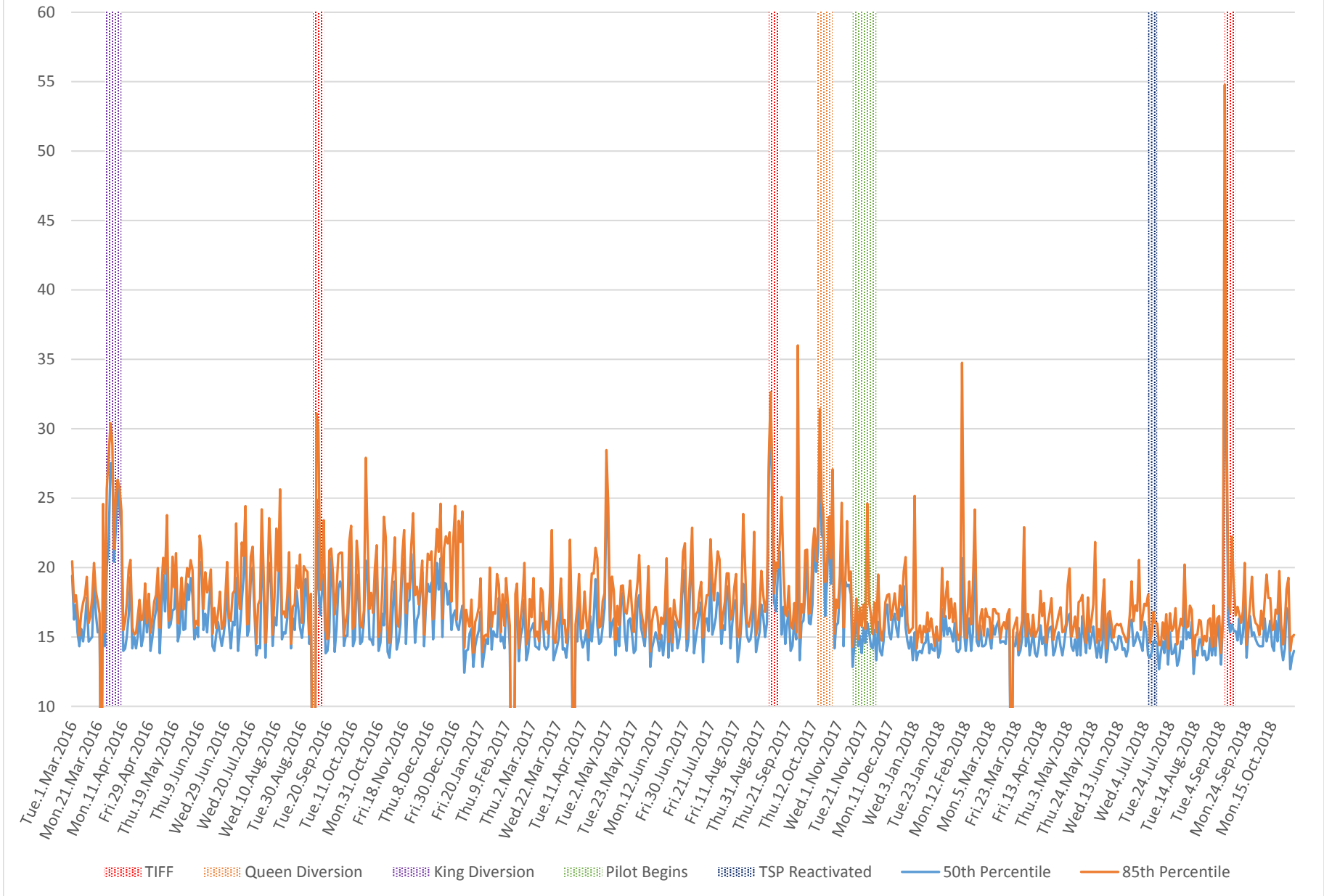


### 504 King Link Times From Jarvis To Bathurst Westbound 2016-2018 8 to 9 PM



⋯ Tiff   
 ⋯ Queen Diversion   
 ⋯ King Diversion   
 ⋯ Pilot Begins   
 ⋯ TSP Reactivated   
 — 50th Percentile   
 — 85th Percentile

# 504 King Link Times From Jarvis To Bathurst Westbound 2016-2018 9 to 10 PM





# 504 King Link Times From Jarvis To Bathurst Westbound 2016-2018 10 to 11 PM

