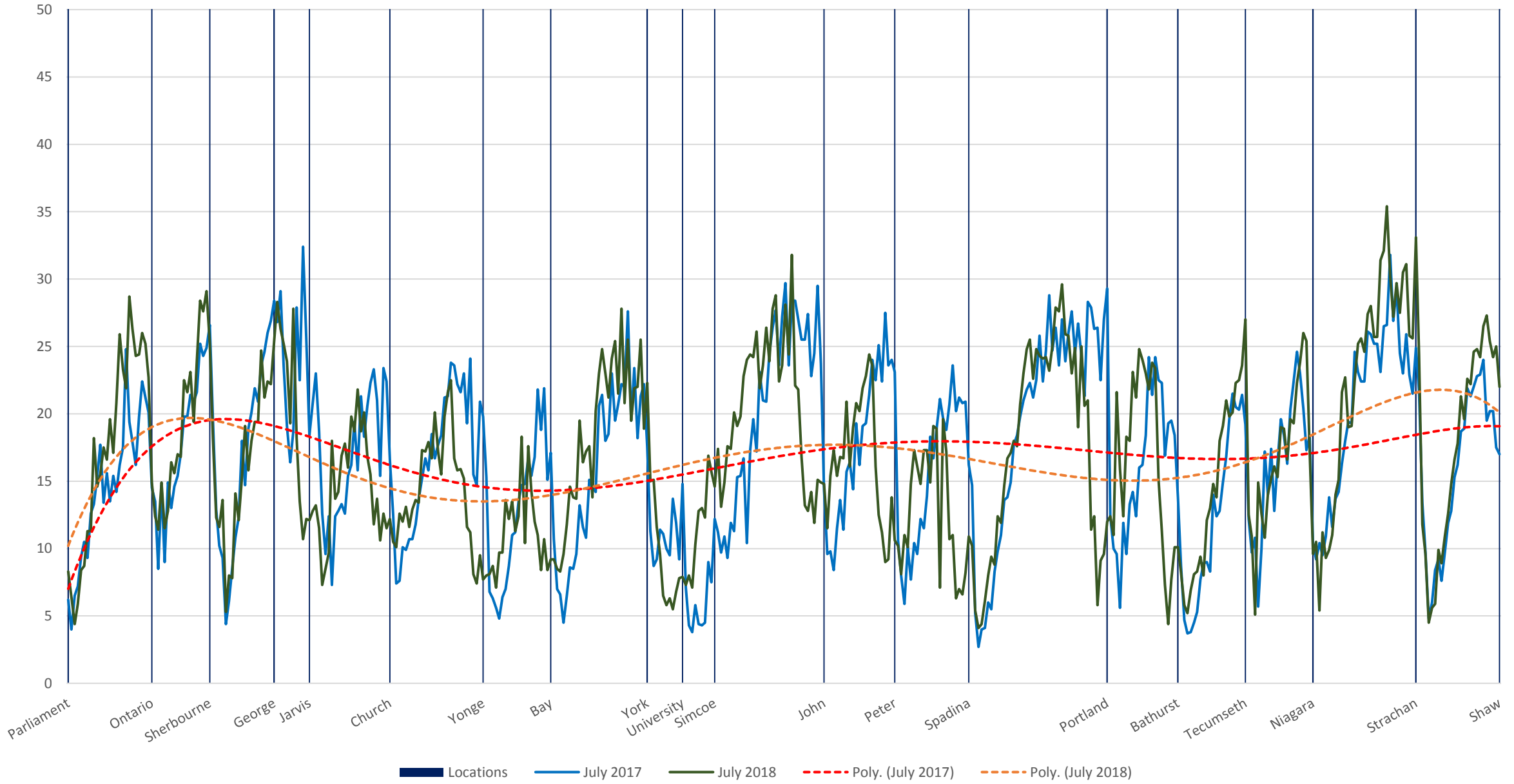
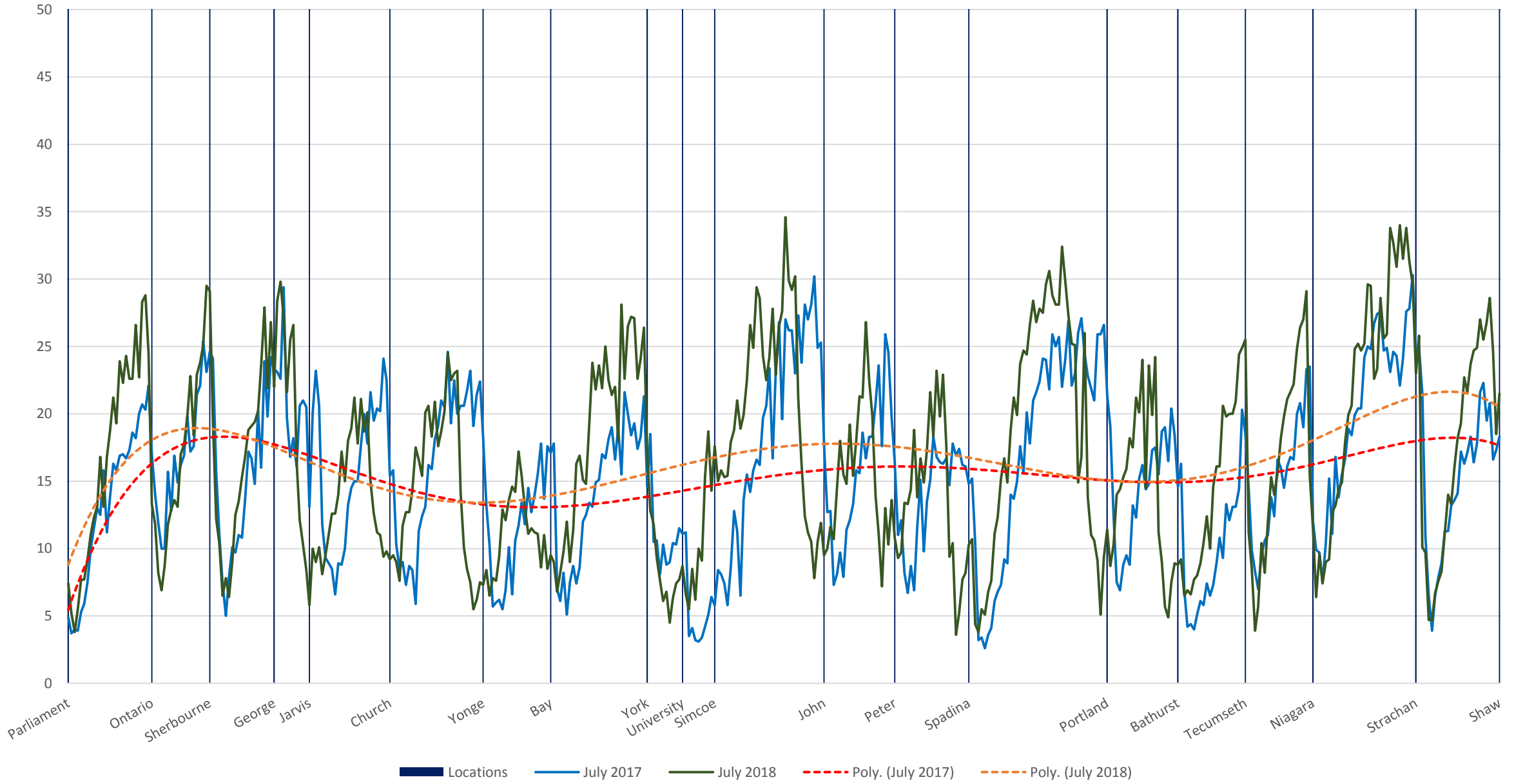


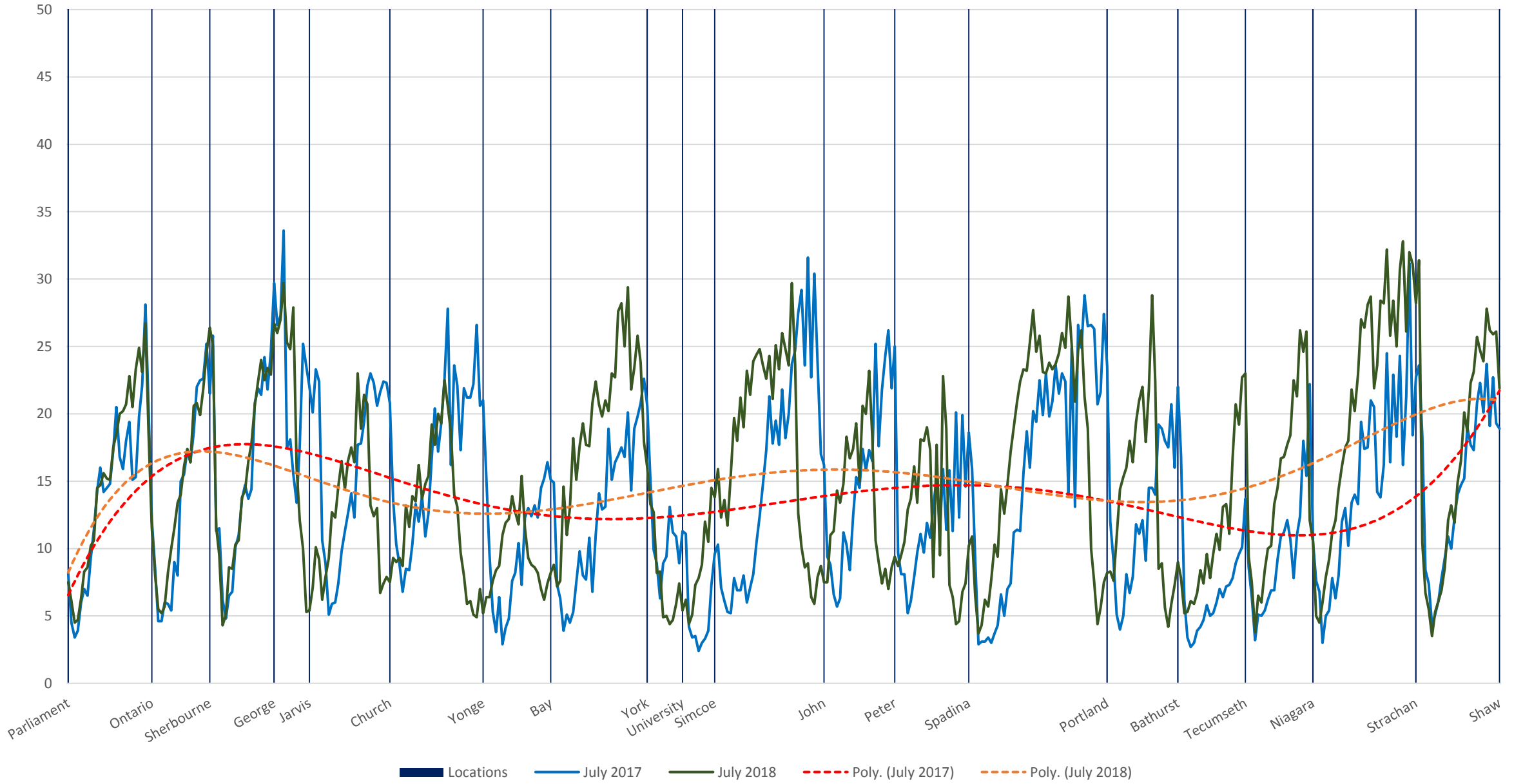
504 King Eastbound July 10-21, 2017 (Blue) vs July 9-20, 2018 (Green) Average Speed 600 to 700



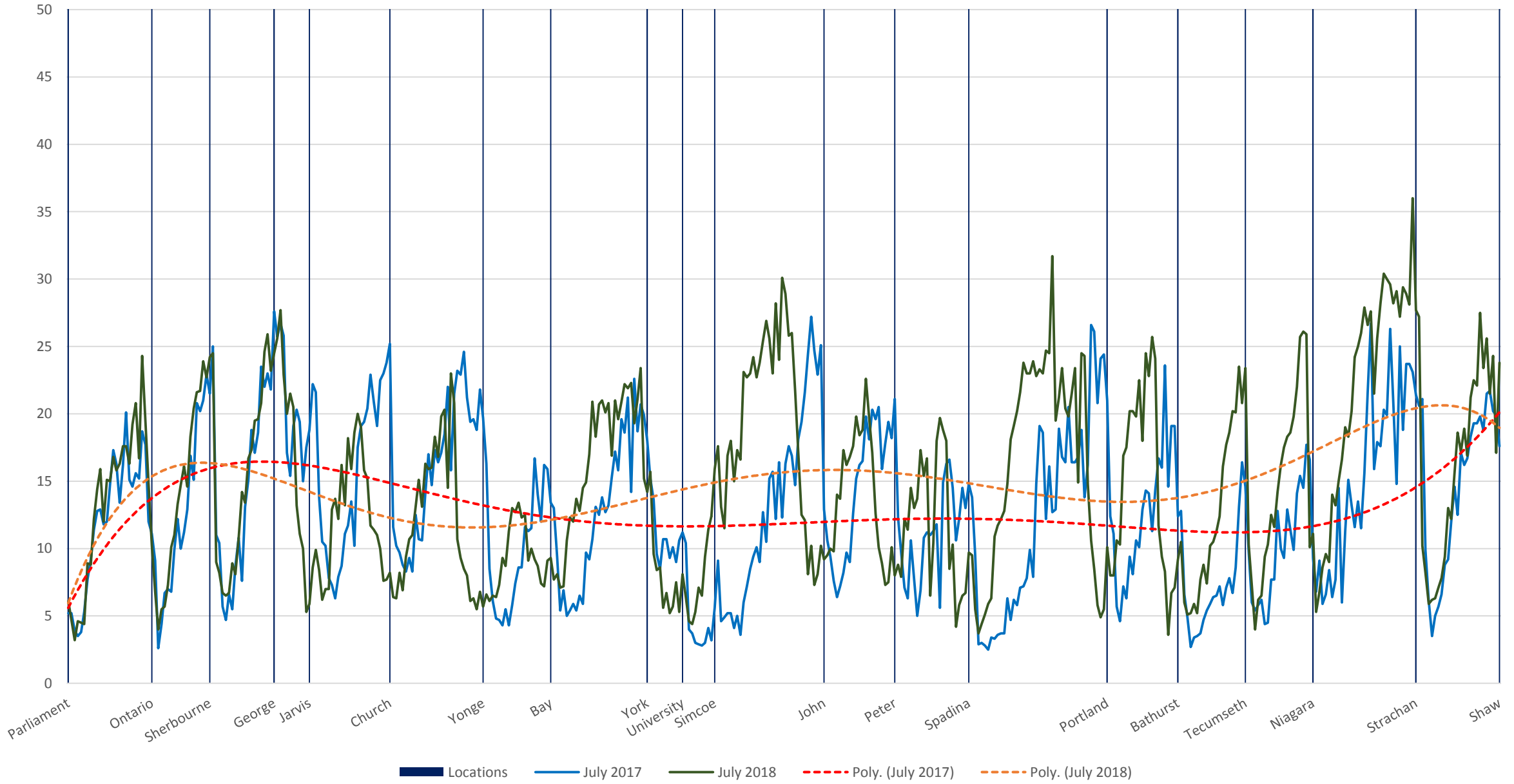
504 King Eastbound July 10-21, 2017 (Blue) vs July 9-20, 2018 (Green) Average Speed 700 to 800



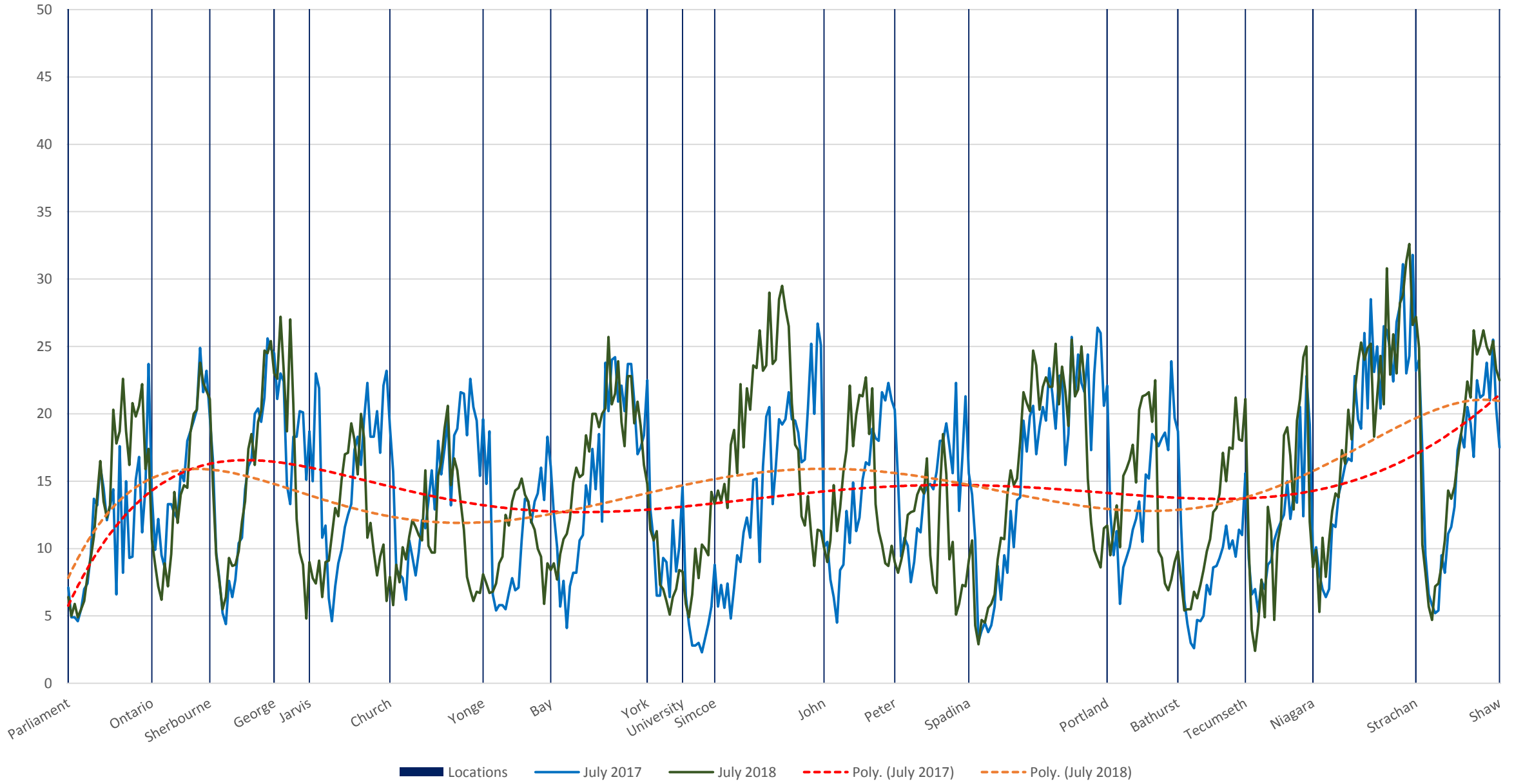
504 King Eastbound July 10-21, 2017 (Blue) vs July 9-20, 2018 (Green) Average Speed 800 to 900



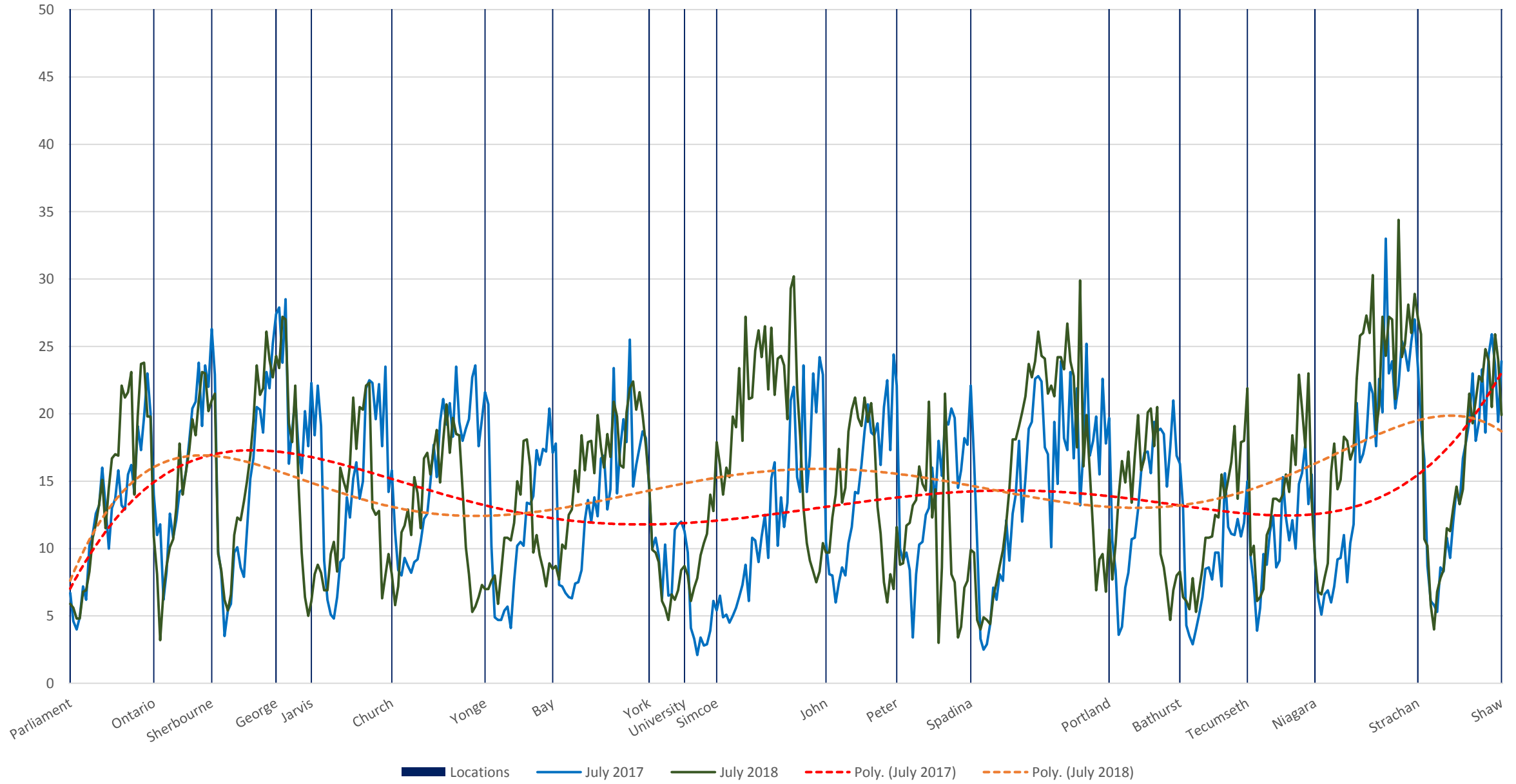
504 King Eastbound July 10-21, 2017 (Blue) vs July 9-20, 2018 (Green) Average Speed 900 to 1000



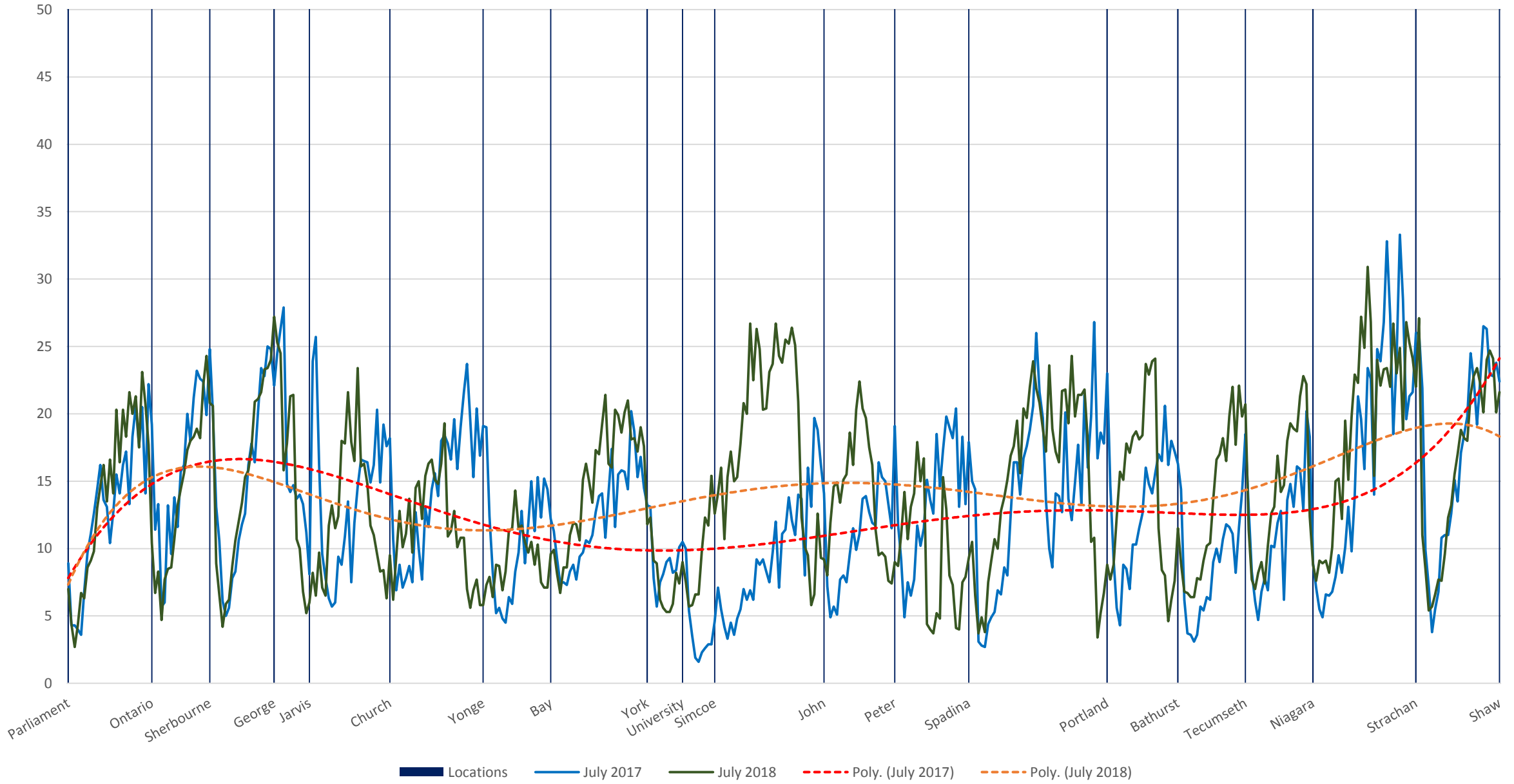
504 King Eastbound July 10-21, 2017 (Blue) vs July 9-20, 2018 (Green) Average Speed 1000 to 1100



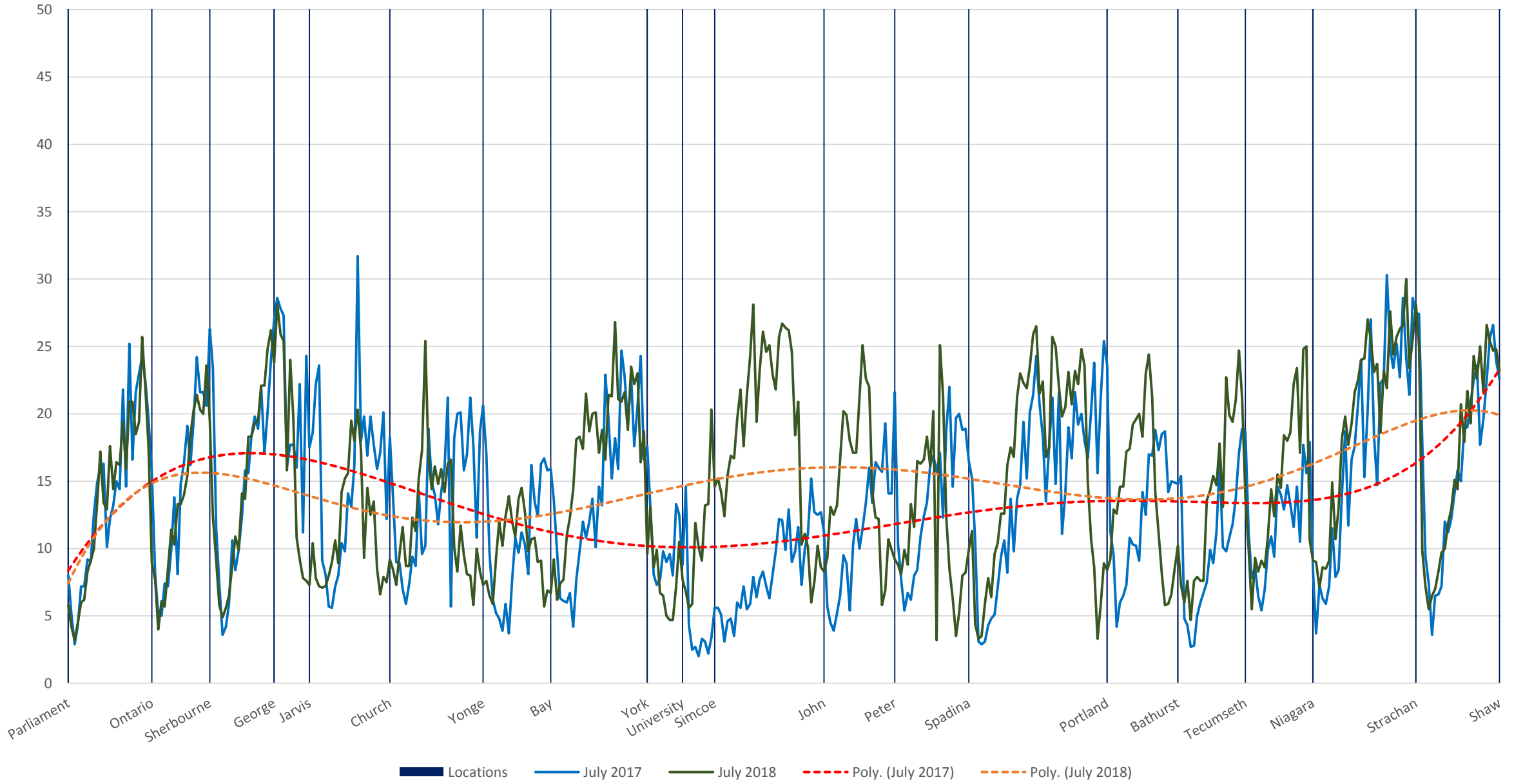
504 King Eastbound July 10-21, 2017 (Blue) vs July 9-20, 2018 (Green) Average Speed 1100 to 1200



504 King Eastbound July 10-21, 2017 (Blue) vs July 9-20, 2018 (Green) Average Speed 1200 to 1300

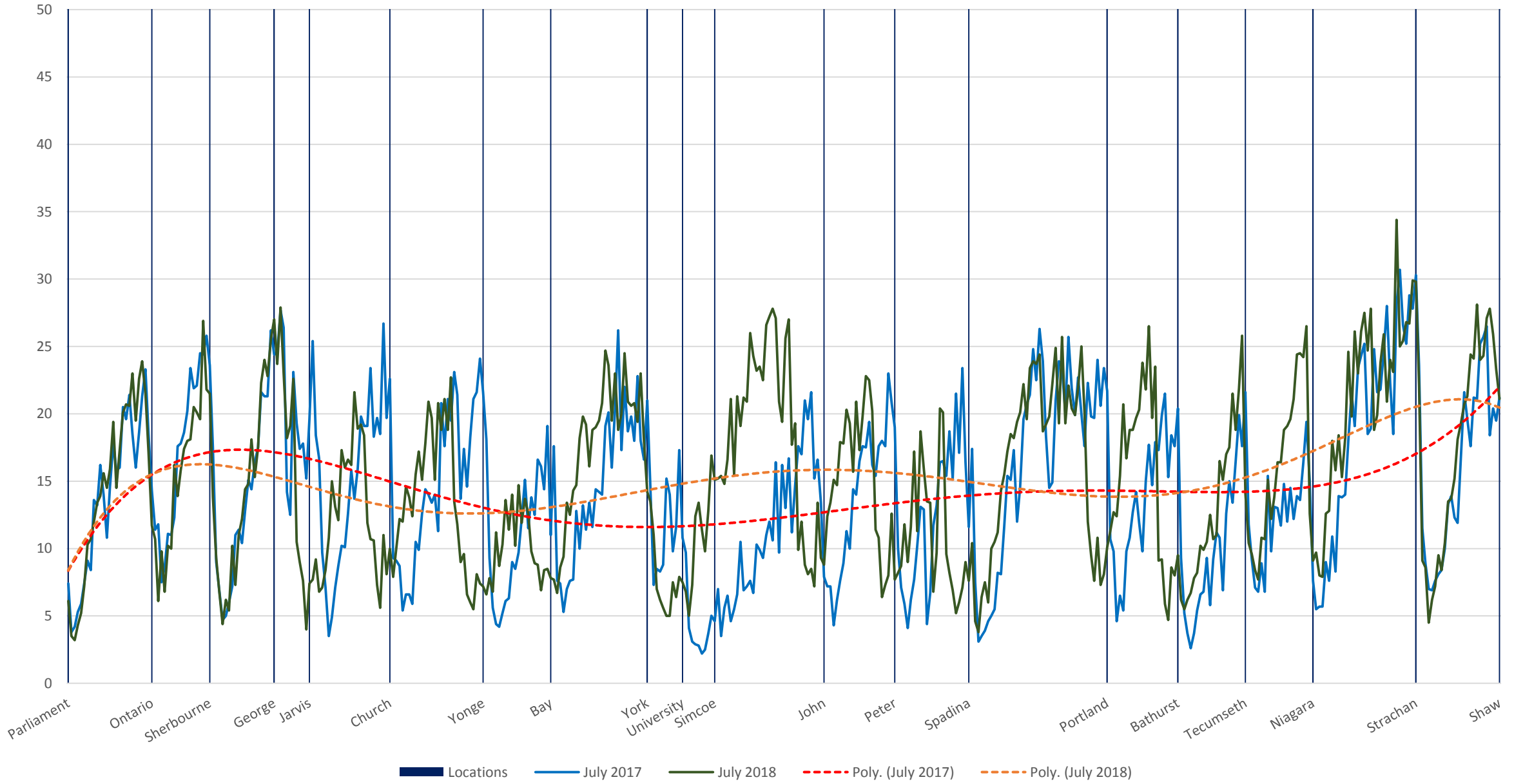


504 King Eastbound July 10-21, 2017 (Blue) vs July 9-20, 2018 (Green) Average Speed 1300 to 1400

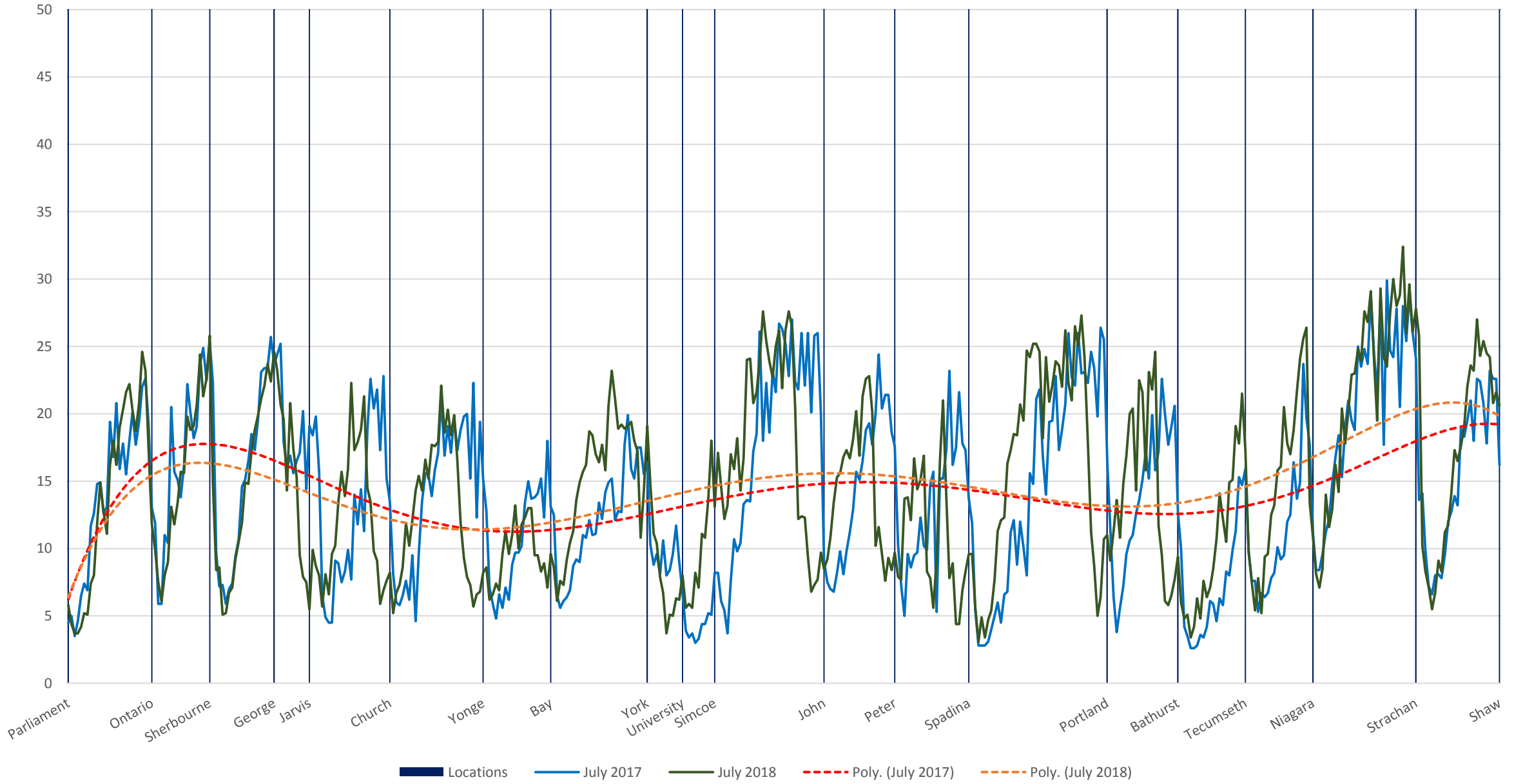




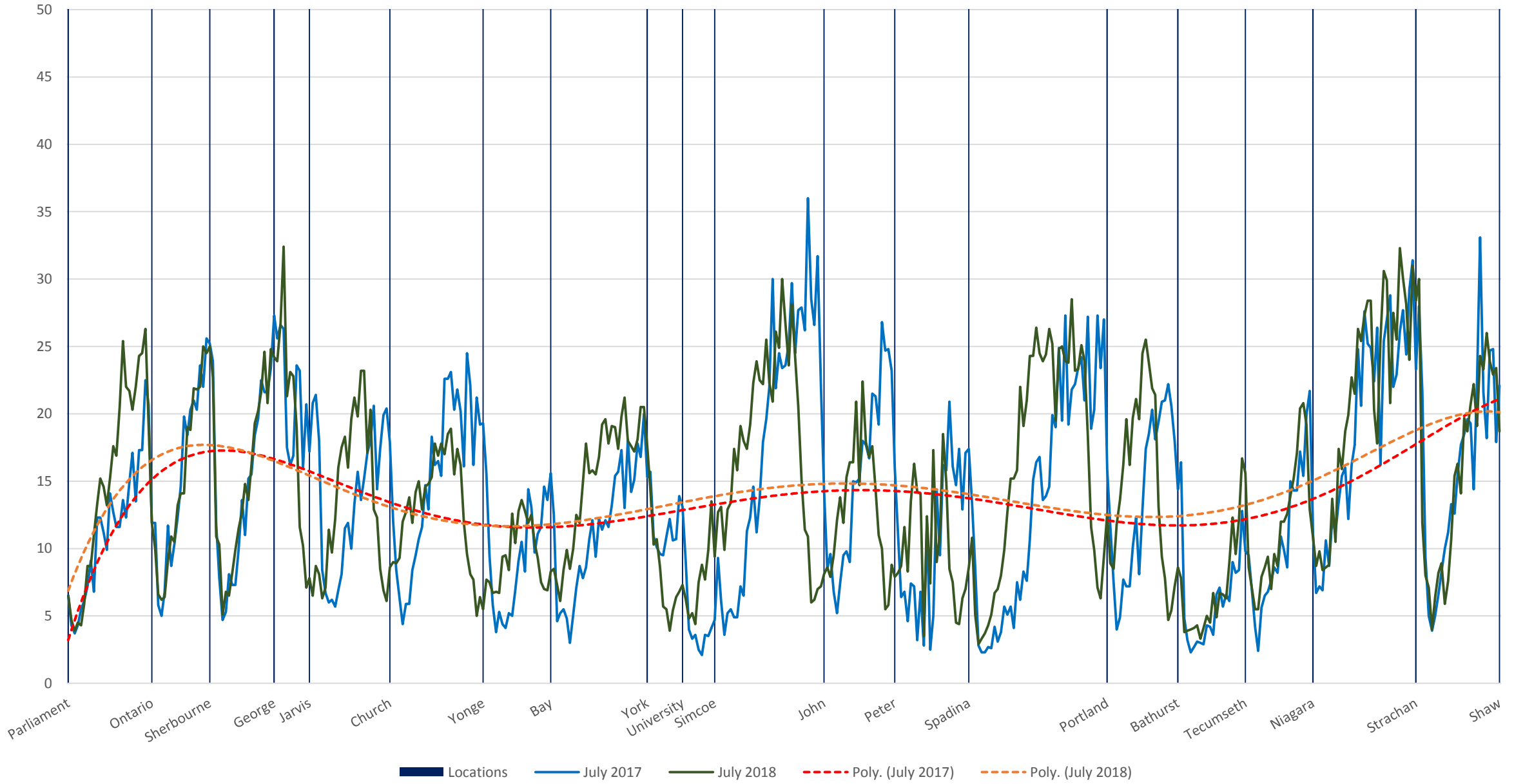
504 King Eastbound July 10-21, 2017 (Blue) vs July 9-20, 2018 (Green) Average Speed 1400 to 1500



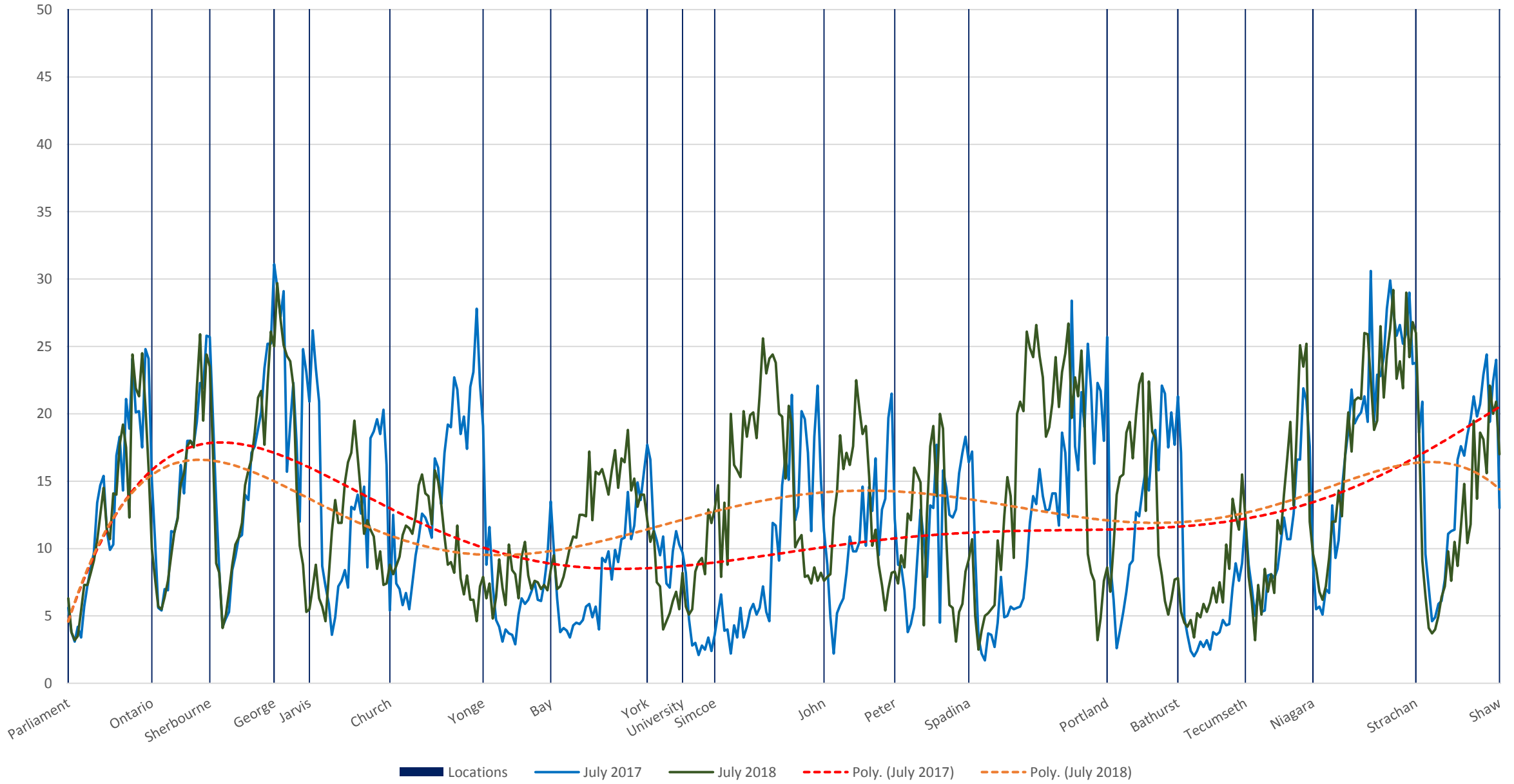
504 King Eastbound July 10-21, 2017 (Blue) vs July 9-20, 2018 (Green) Average Speed 1500 to 1600



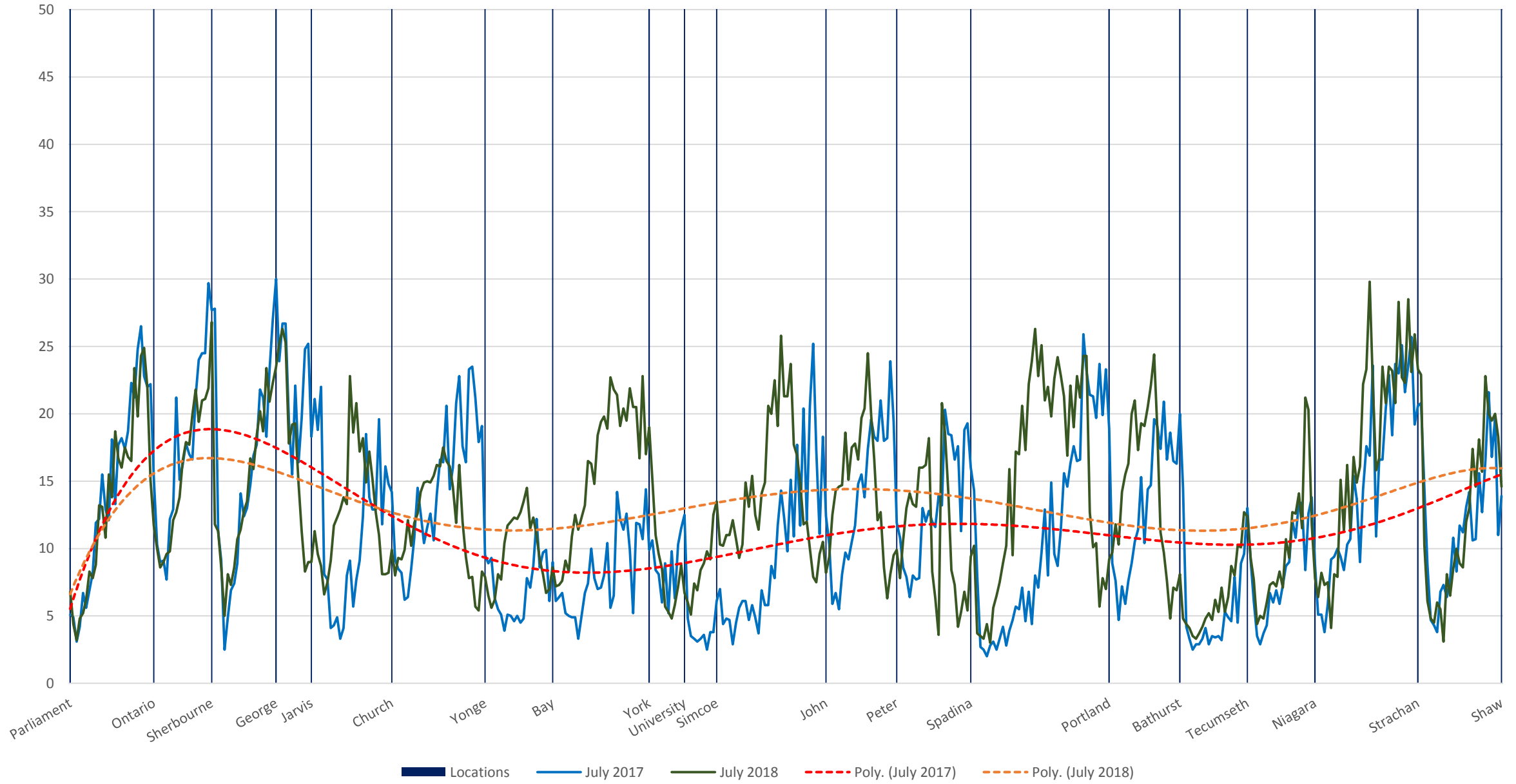
504 King Eastbound July 10-21, 2017 (Blue) vs July 9-20, 2018 (Green) Average Speed 1600 to 1700



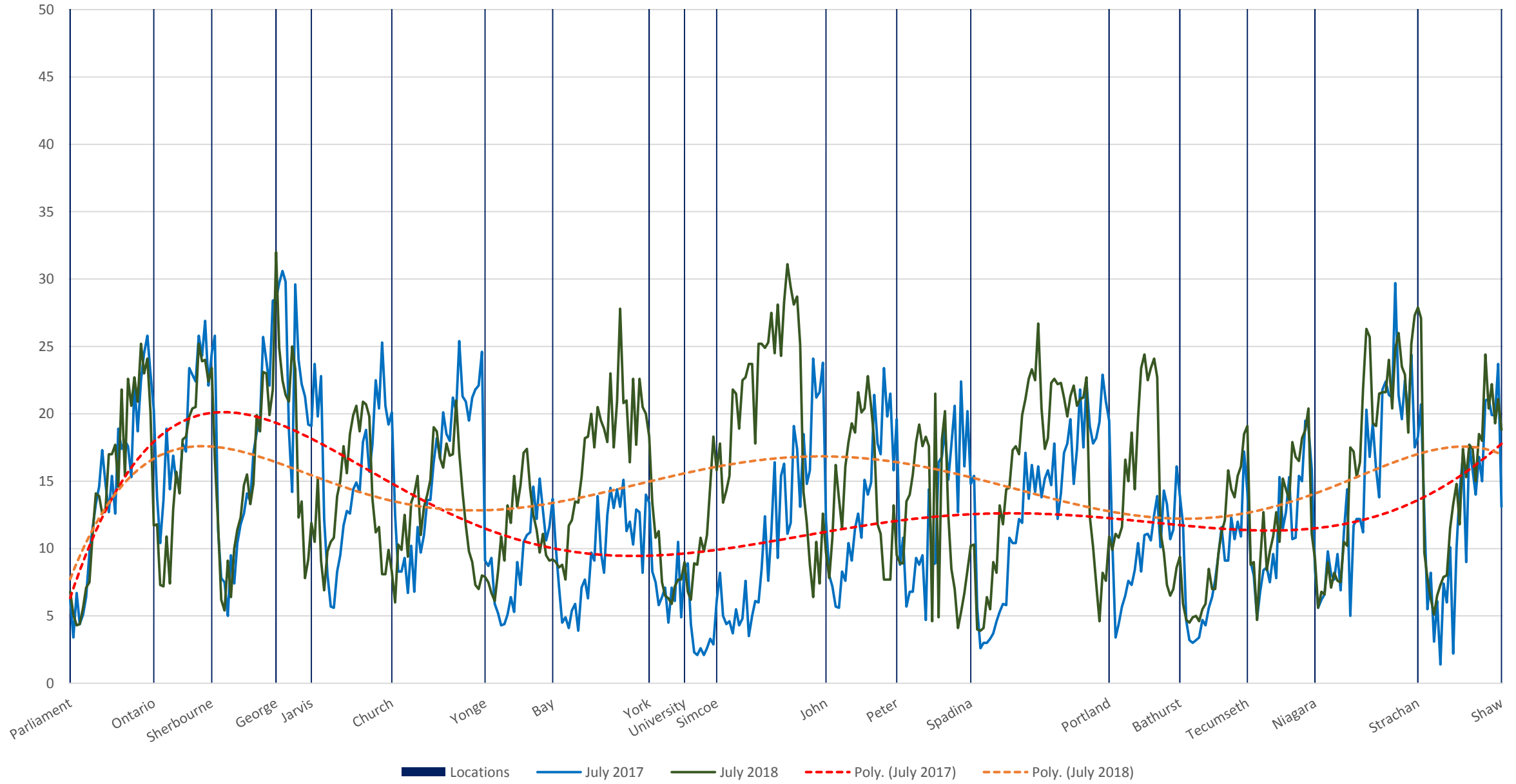
504 King Eastbound July 10-21, 2017 (Blue) vs July 9-20, 2018 (Green) Average Speed 1700 to 1800



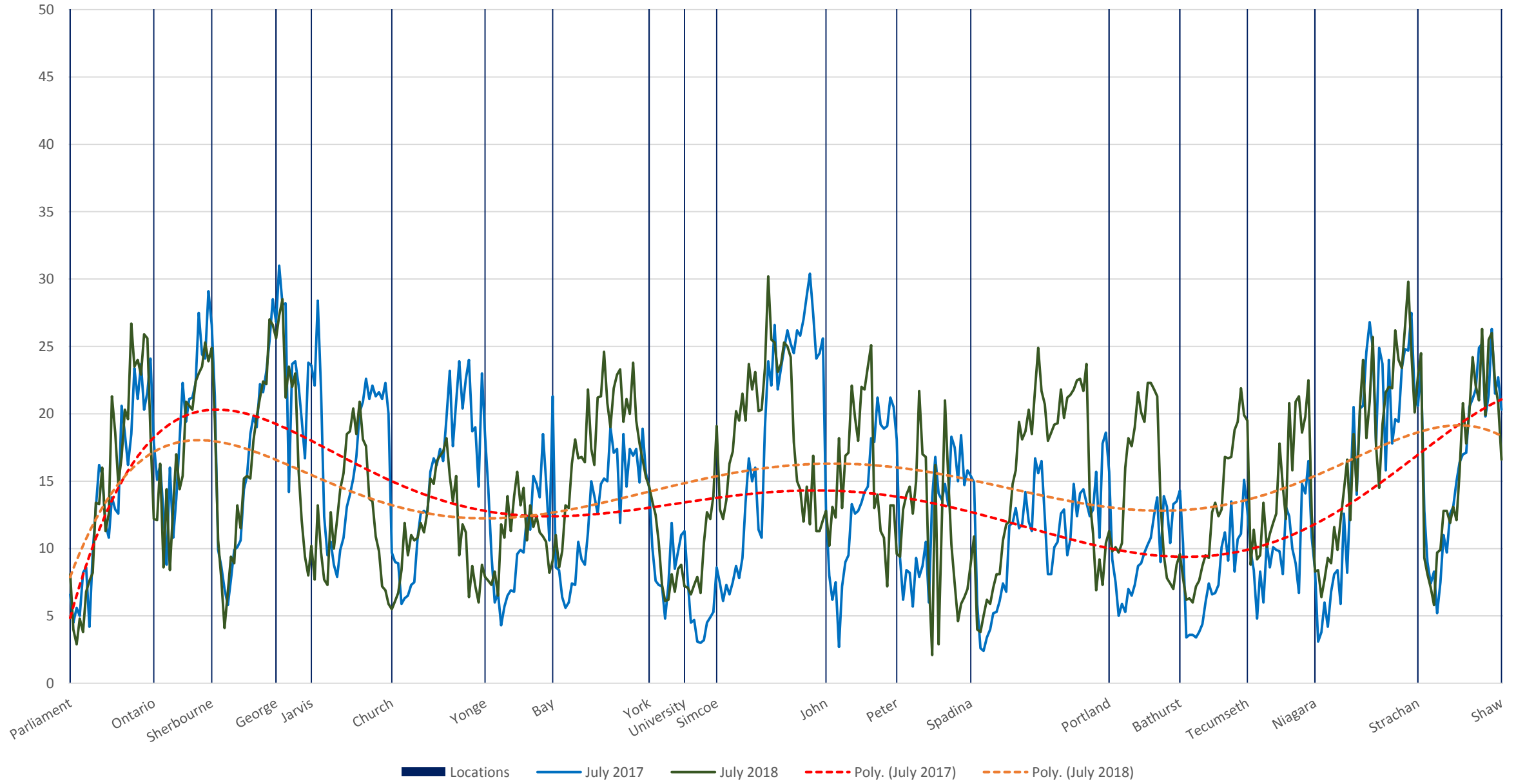
504 King Eastbound July 10-21, 2017 (Blue) vs July 9-20, 2018 (Green) Average Speed 1800 to 1900



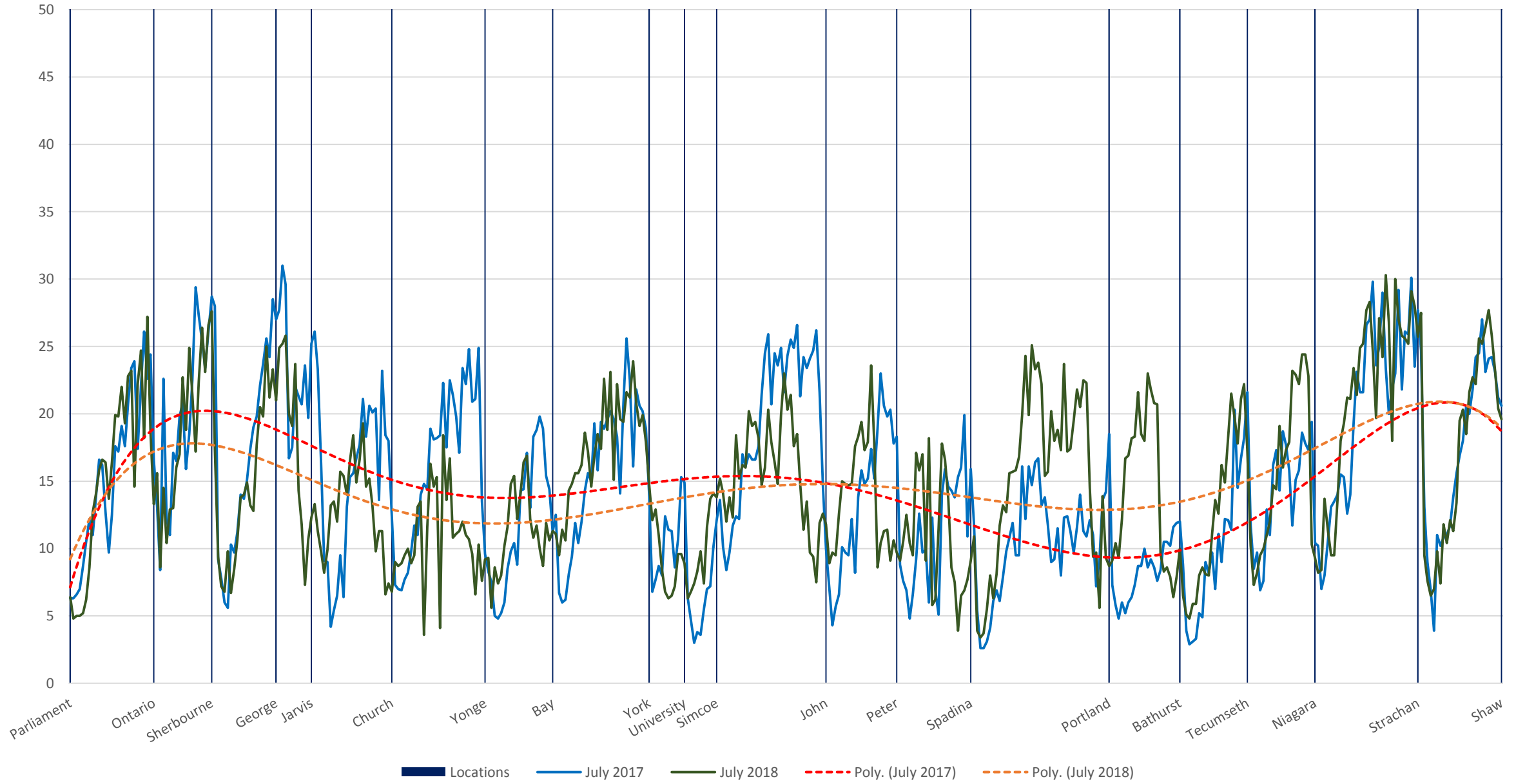
504 King Eastbound July 10-21, 2017 (Blue) vs July 9-20, 2018 (Green) Average Speed 1900 to 2000



504 King Eastbound July 10-21, 2017 (Blue) vs July 9-20, 2018 (Green) Average Speed 2000 to 2100

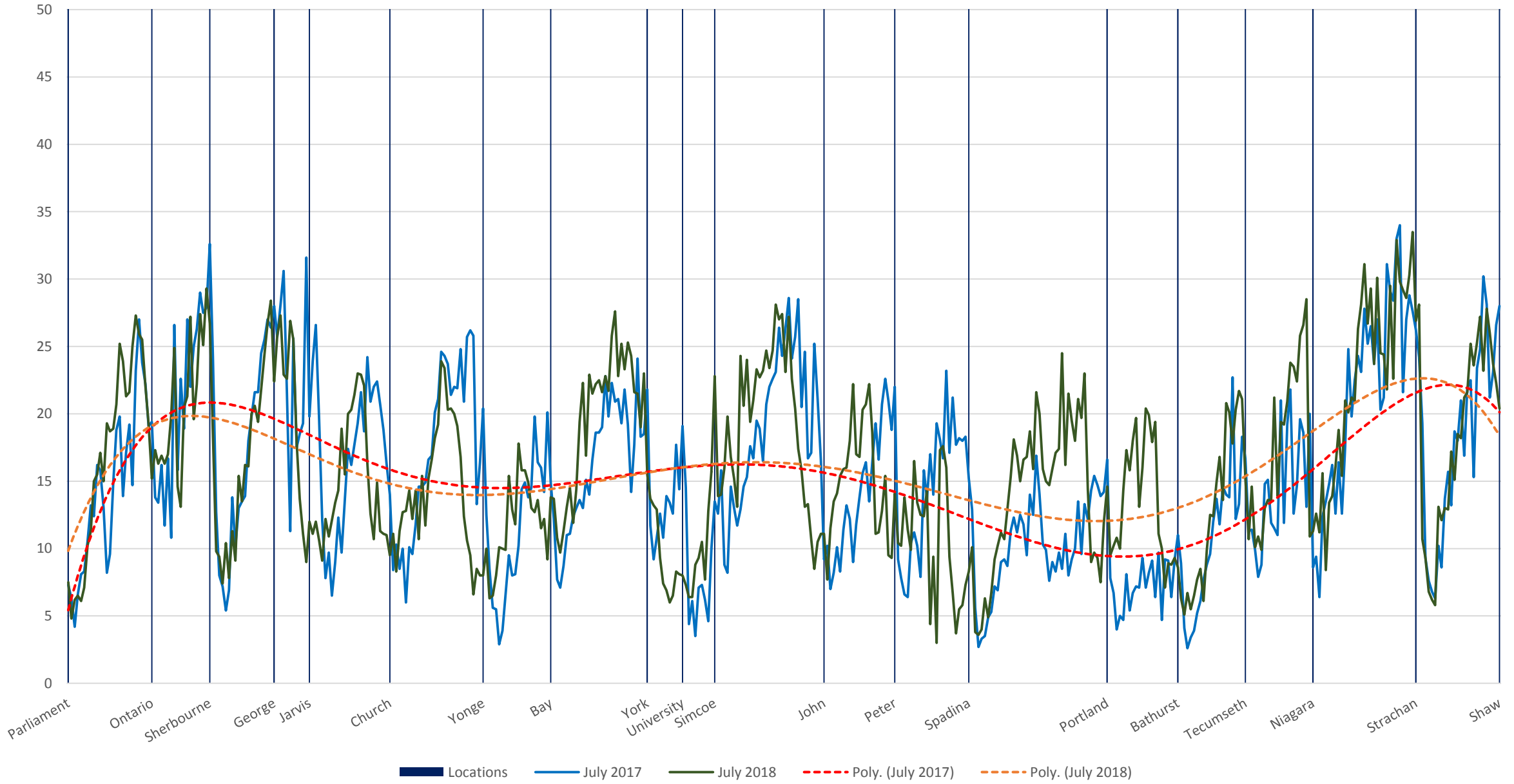


504 King Eastbound July 10-21, 2017 (Blue) vs July 9-20, 2018 (Green) Average Speed 2100 to 2200

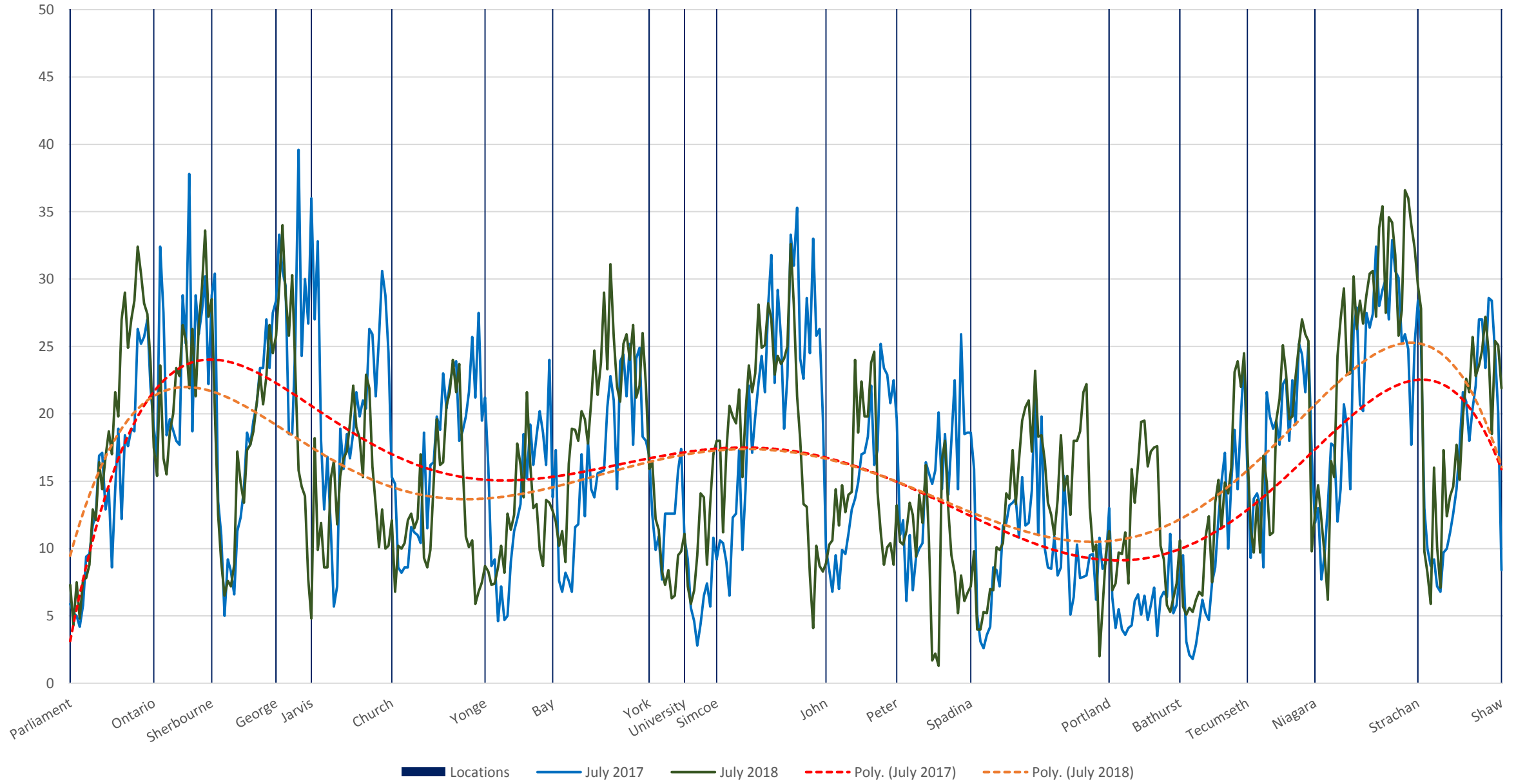




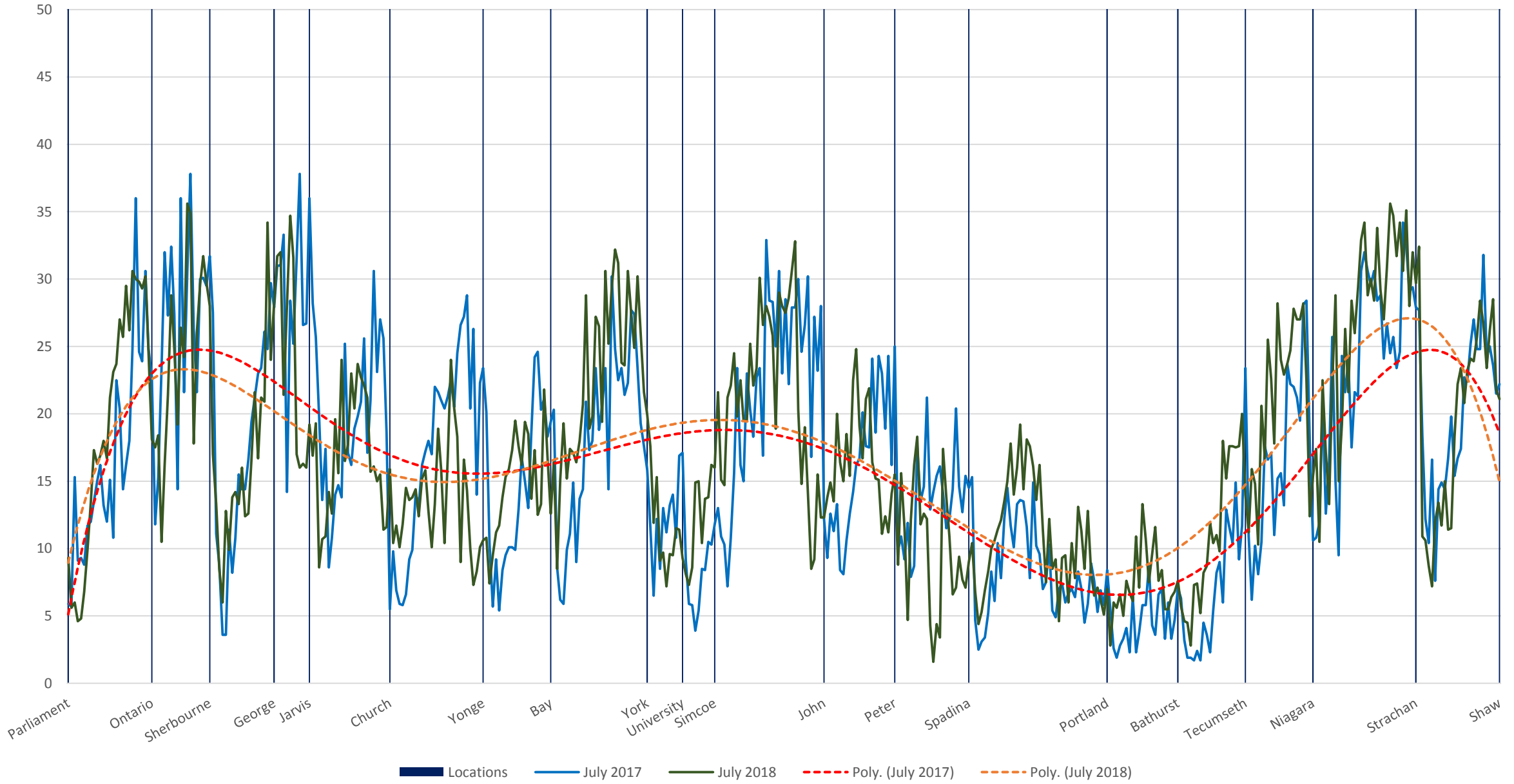
504 King Eastbound July 10-21, 2017 (Blue) vs July 9-20, 2018 (Green) Average Speed 2200 to 2300



504 King Eastbound July 10-21, 2017 (Blue) vs July 9-20, 2018 (Green) Average Speed 2300 to 2400



504 King Eastbound July 10-21, 2017 (Blue) vs July 9-20, 2018 (Green) Average Speed 2400 to 2500



504 King Eastbound July 10-21, 2017 (Blue) vs July 9-20, 2018 (Green) Average Speed 2500 to 2600

