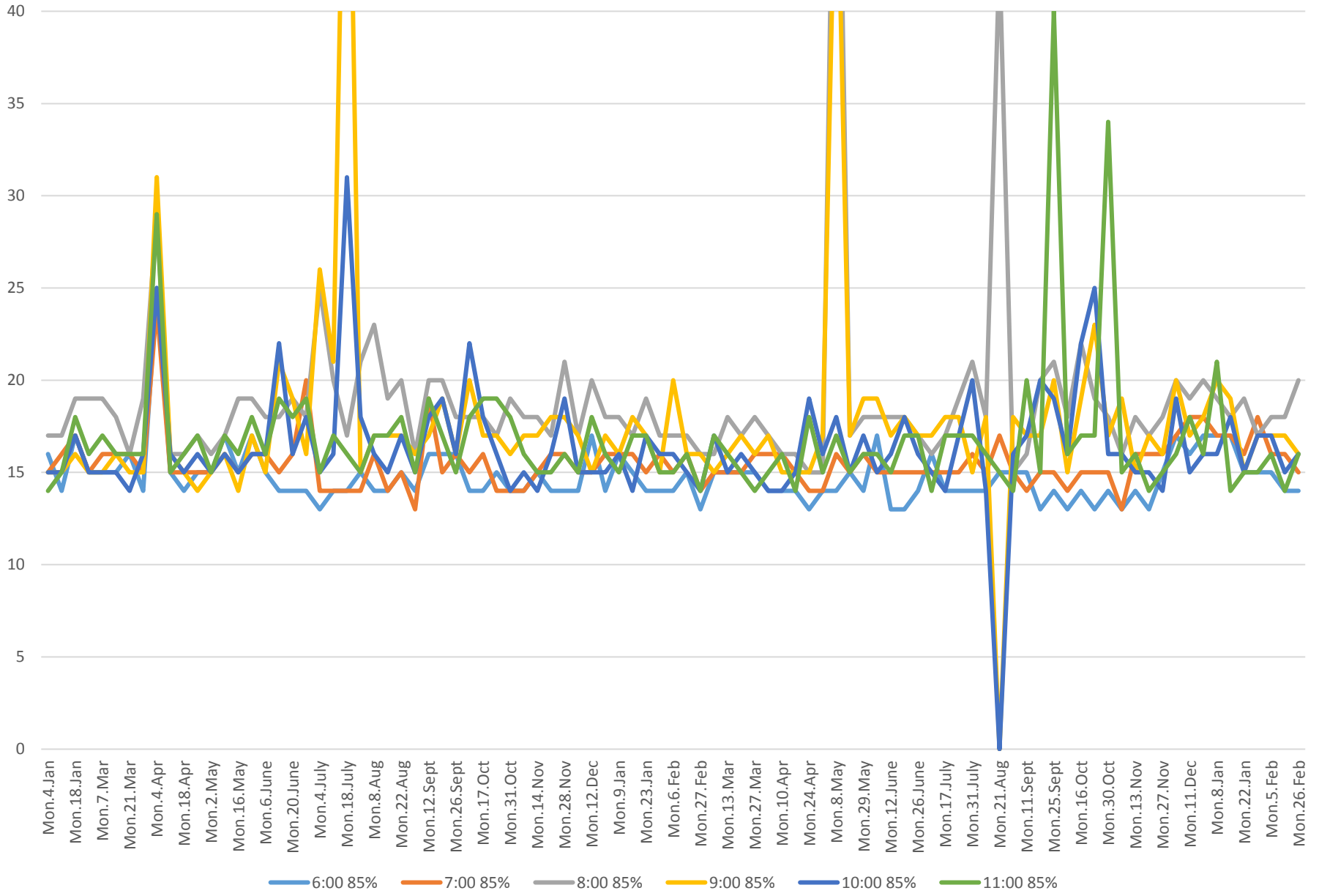
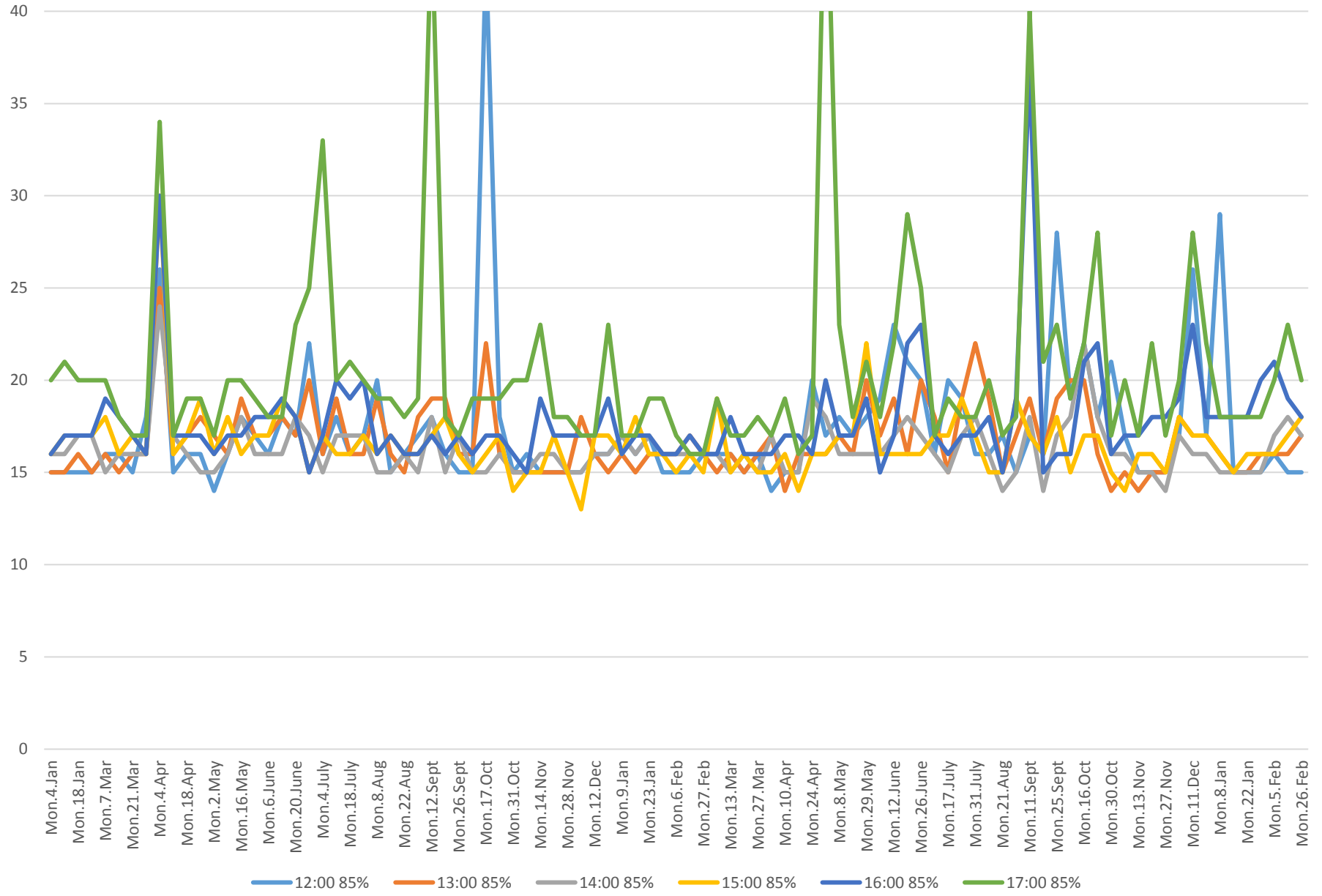


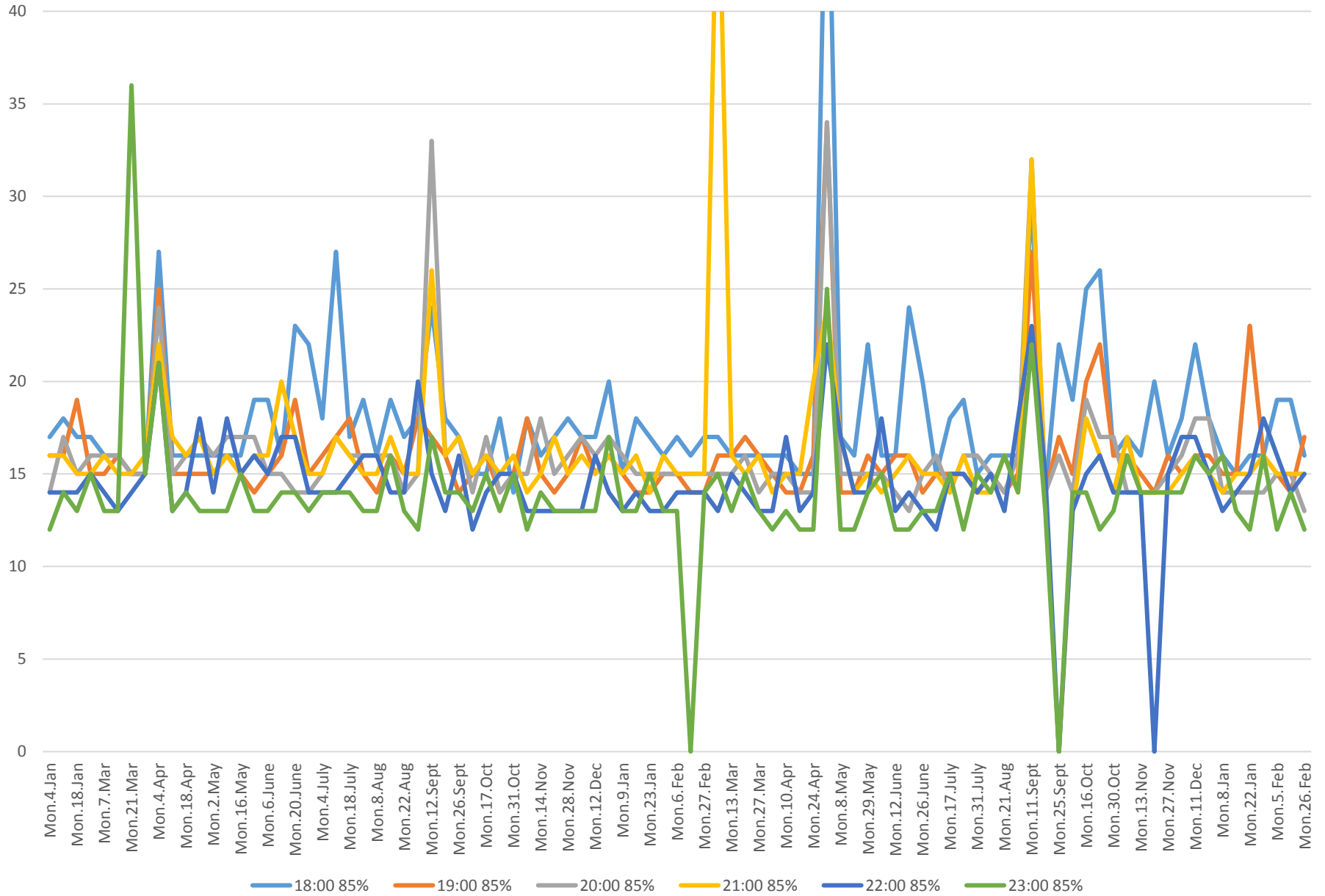
504 King Travel Times Bathurst to Jarvis Eastbound 2016 to 2018 85th Percentile Monday Mornings



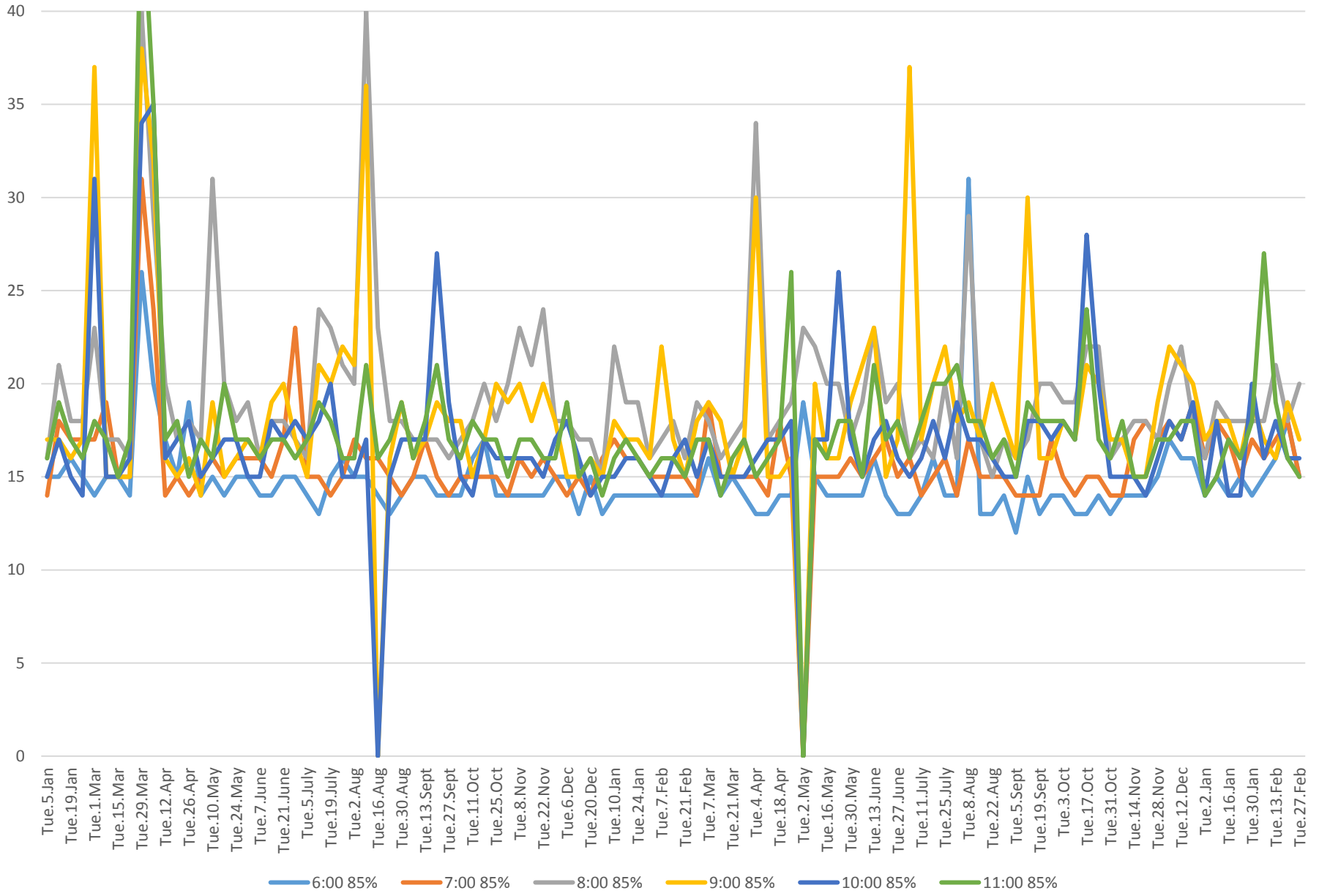
504 King Travel Times Bathurst to Jarvis Eastbound 2016 to 2018 85th Percentile Monday Afternoons



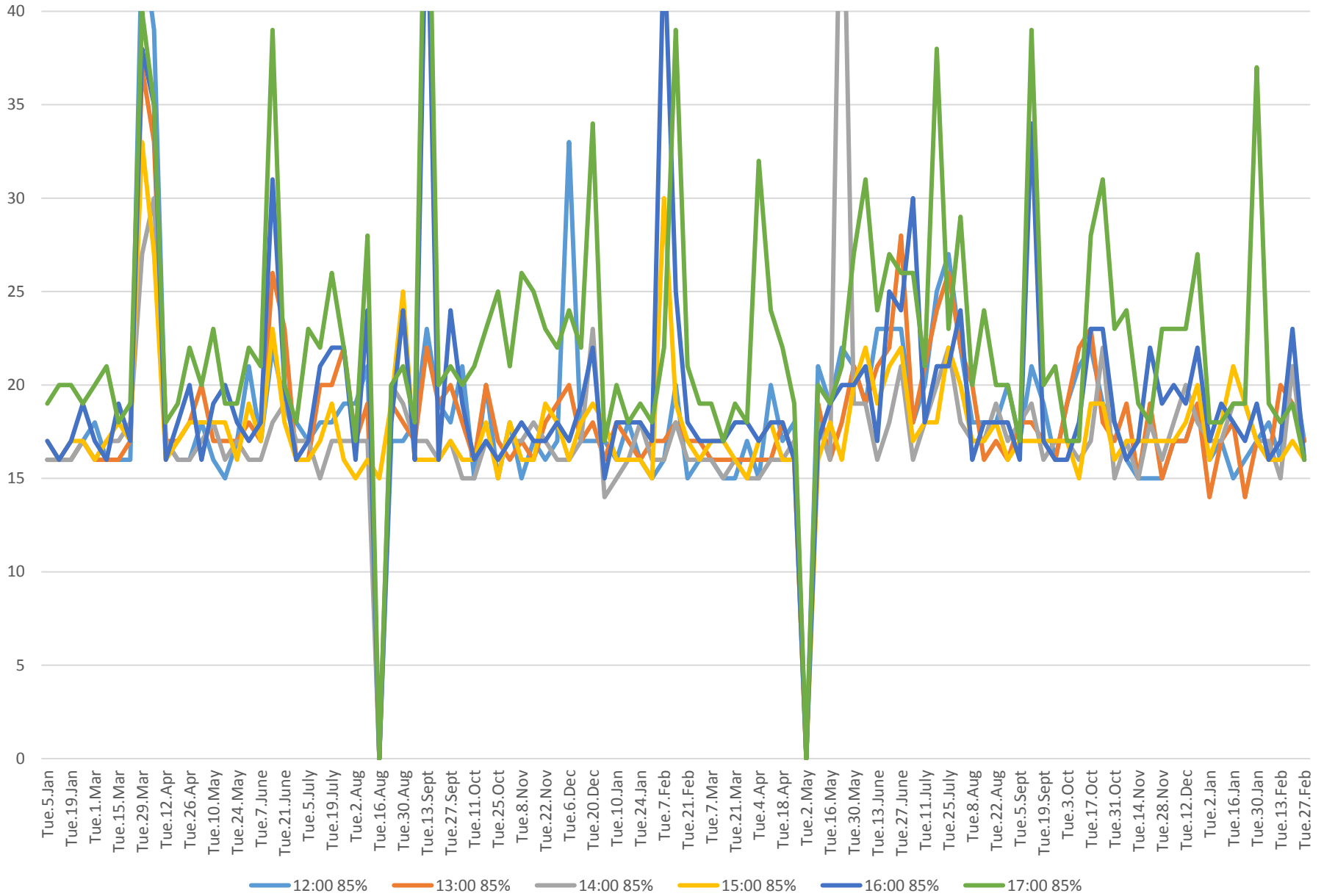
504 King Travel Times Bathurst to Jarvis Eastbound 2016 to 2018 85th Percentile Monday Evenings



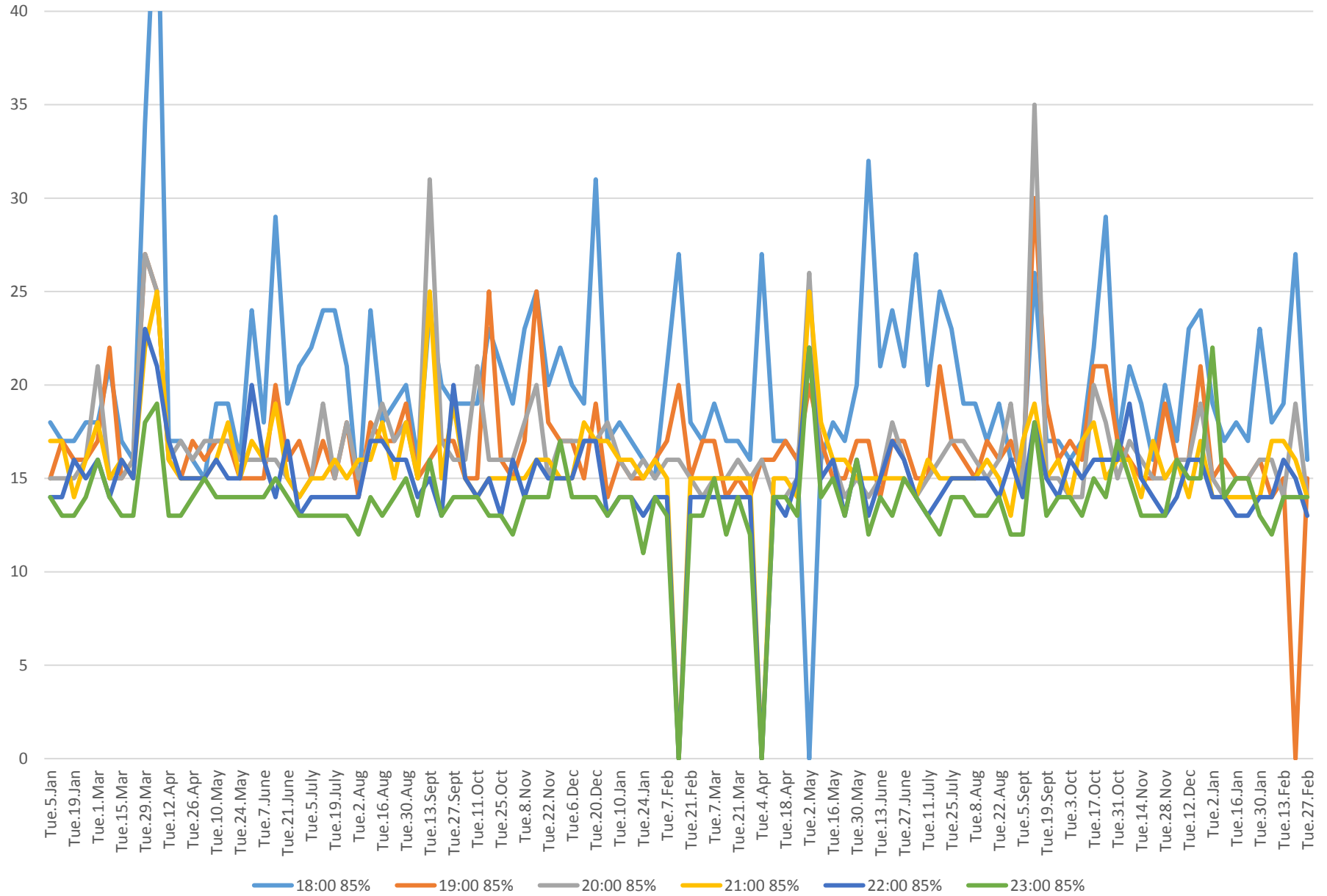
504 King Travel Times Bathurst to Jarvis Eastbound 2016 to 2018 85th Percentile Tuesday Mornings



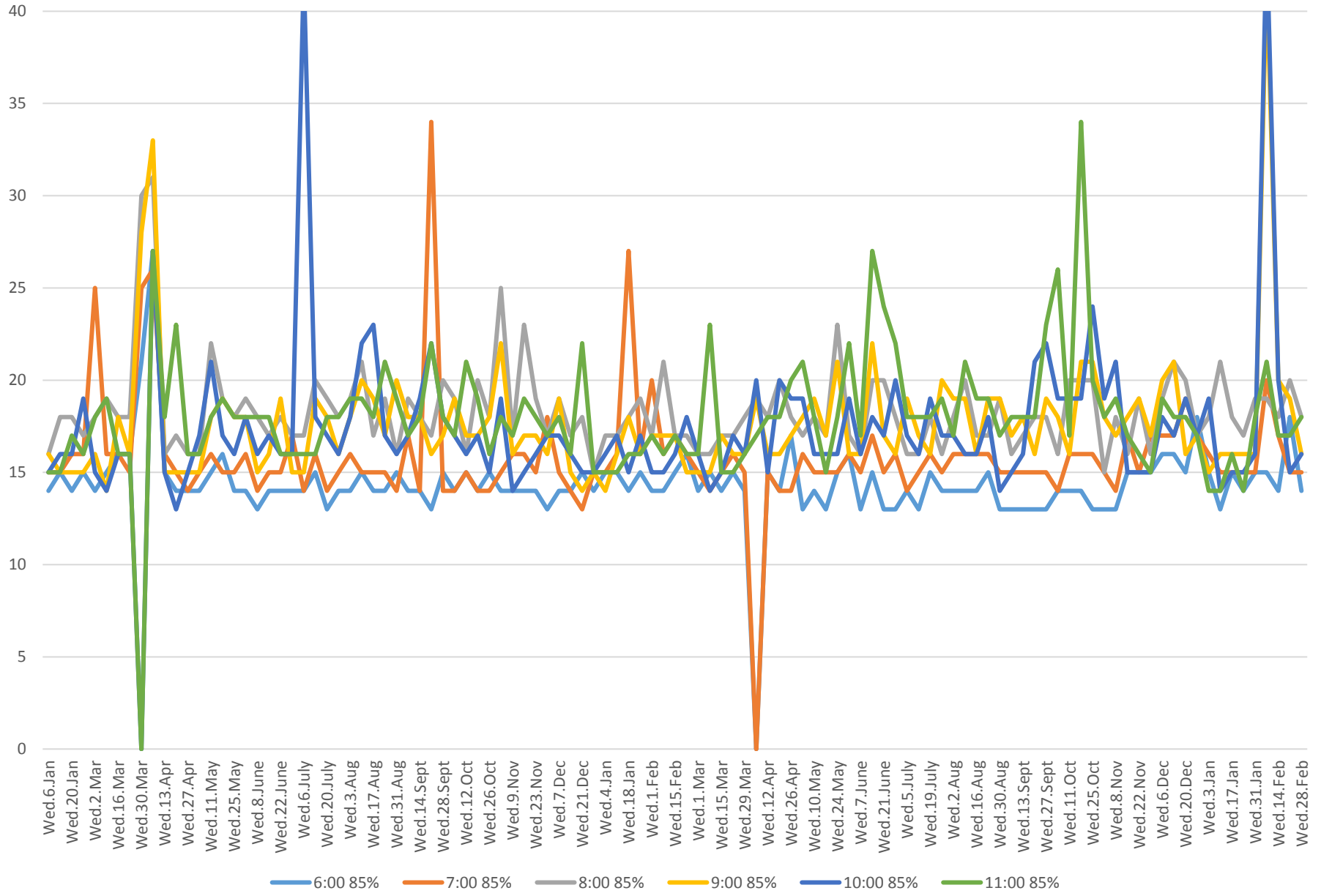
504 King Travel Times Bathurst to Jarvis Eastbound 2016 to 2018 85th Percentile Tuesday Afternoons



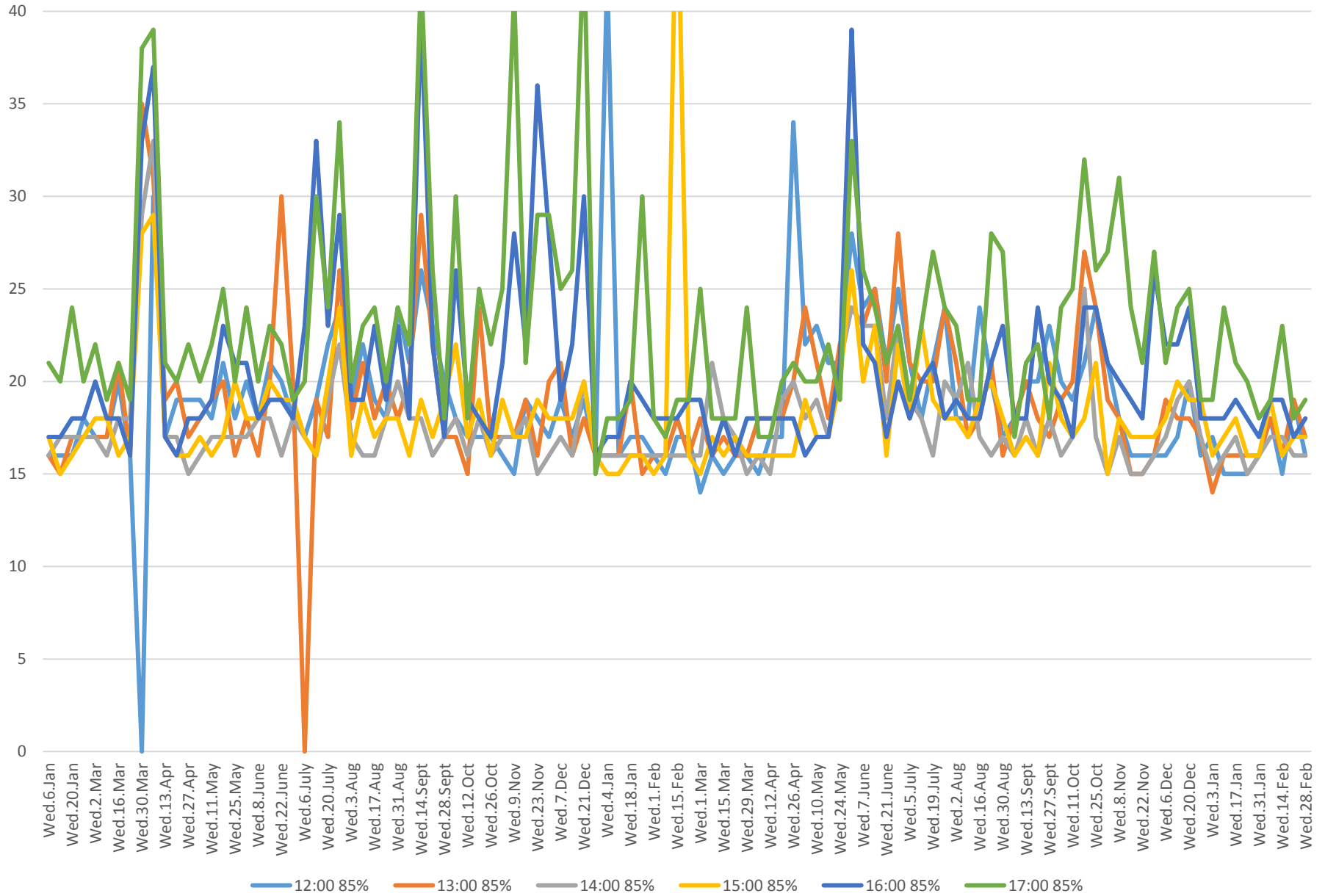
504 King Travel Times Bathurst to Jarvis Eastbound 2016 to 2018 85th Percentile Tuesday Evenings



504 King Travel Times Bathurst to Jarvis Eastbound 2016 to 2018 85th Percentile Wednesday Mornings

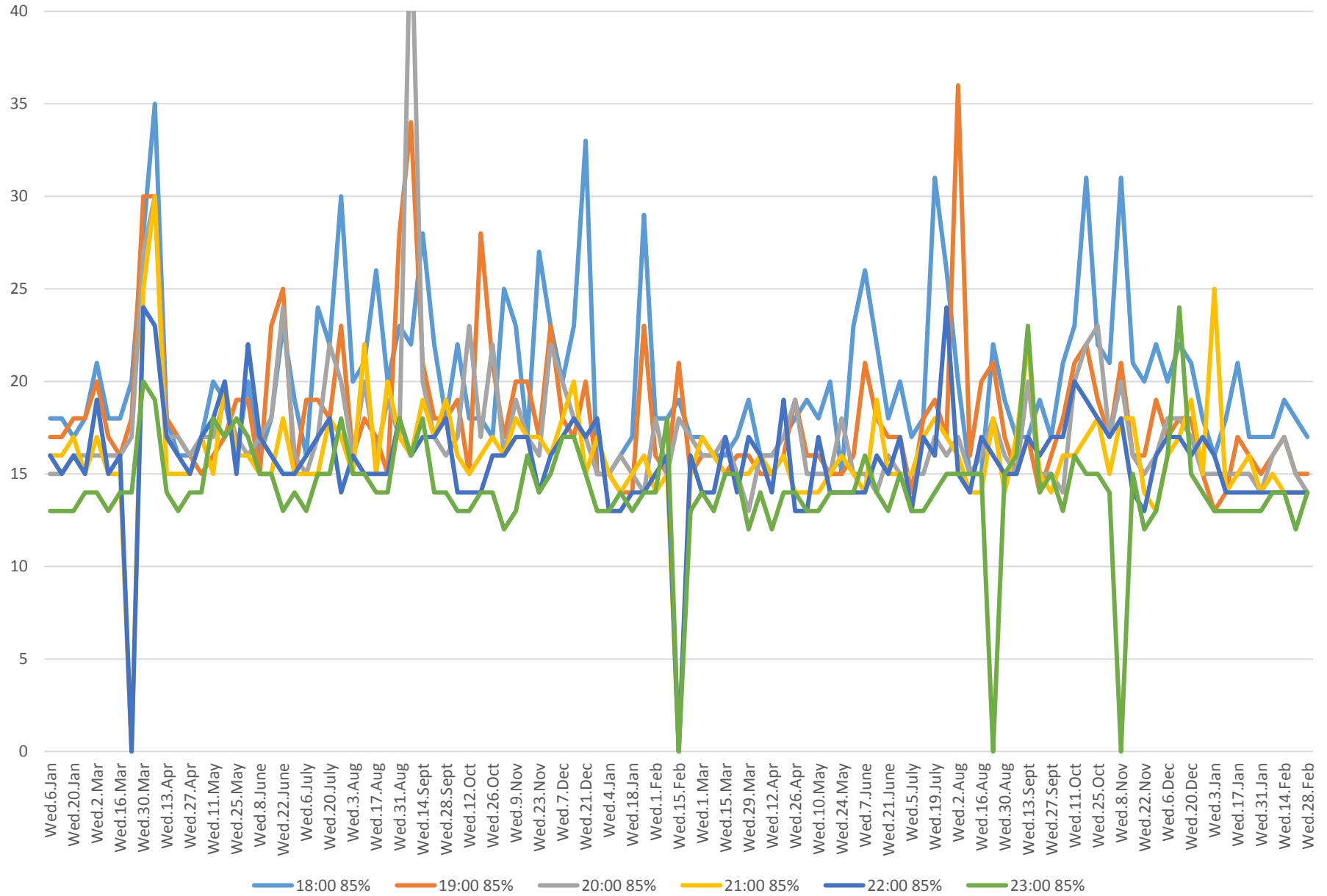


504 King Travel Times Bathurst to Jarvis Eastbound 2016 to 2018 85th Percentile Wednesday Afternoons

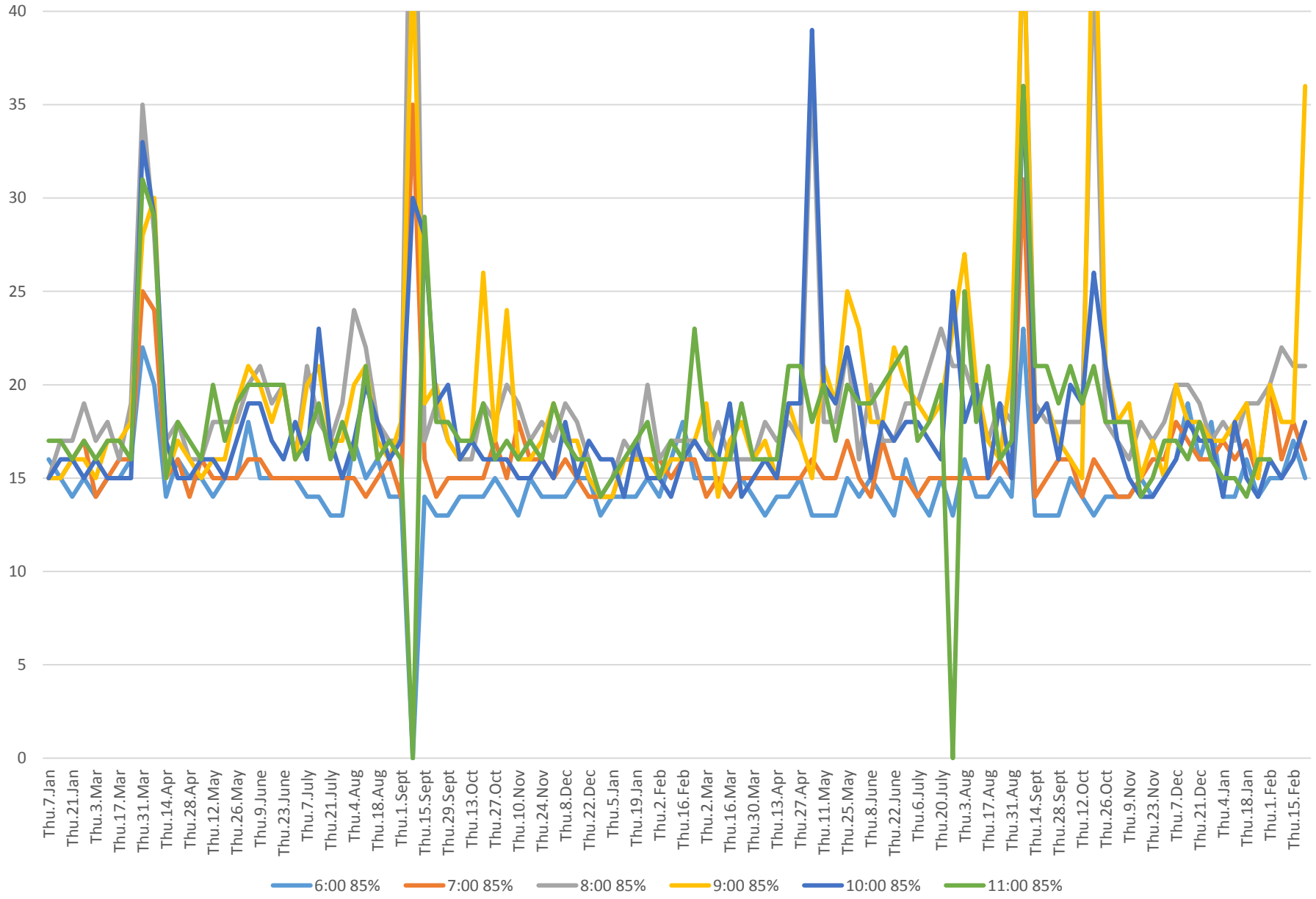




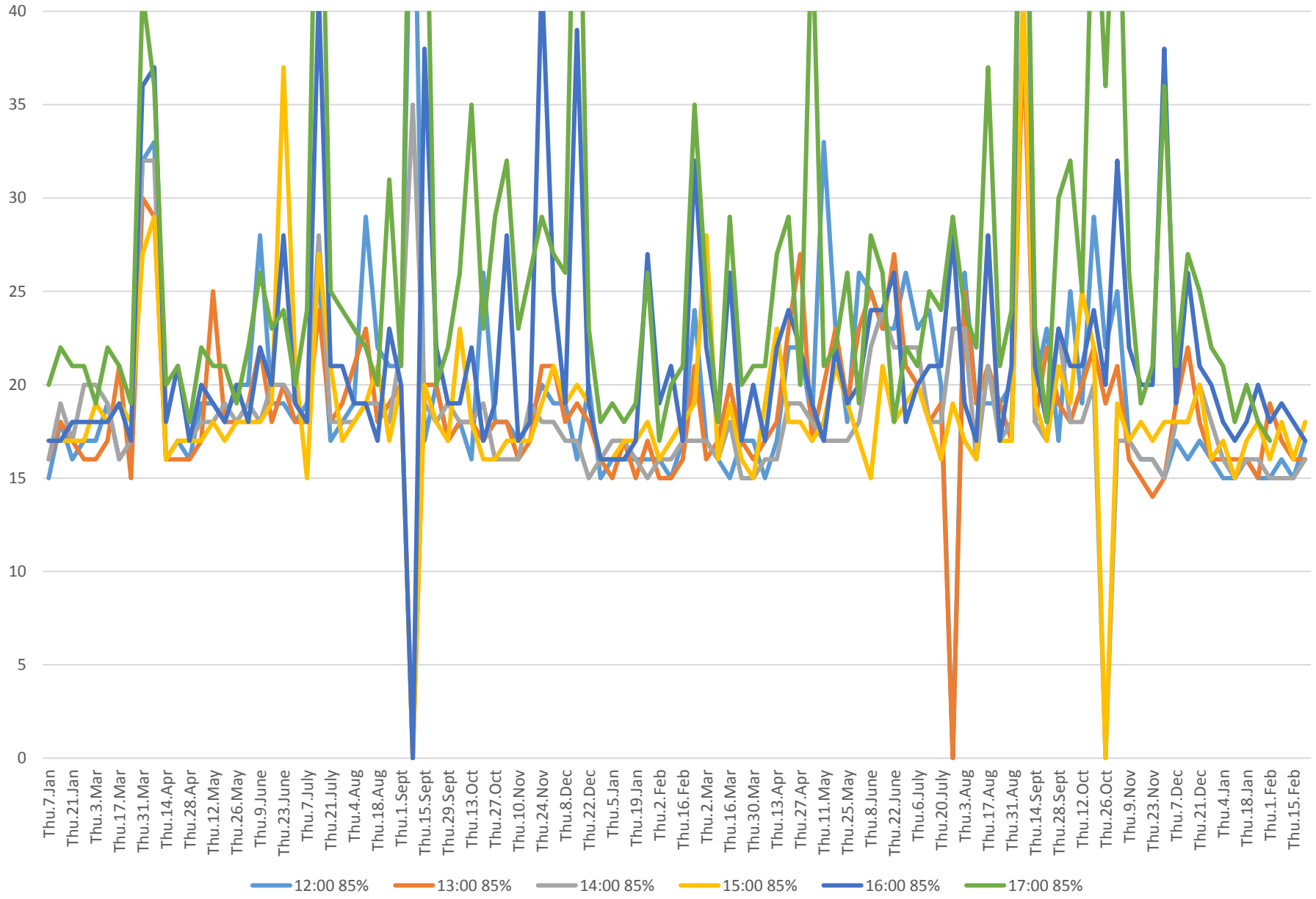
504 King Travel Times Bathurst to Jarvis Eastbound 2016 to 2018 85th Percentile Wednesday Evenings



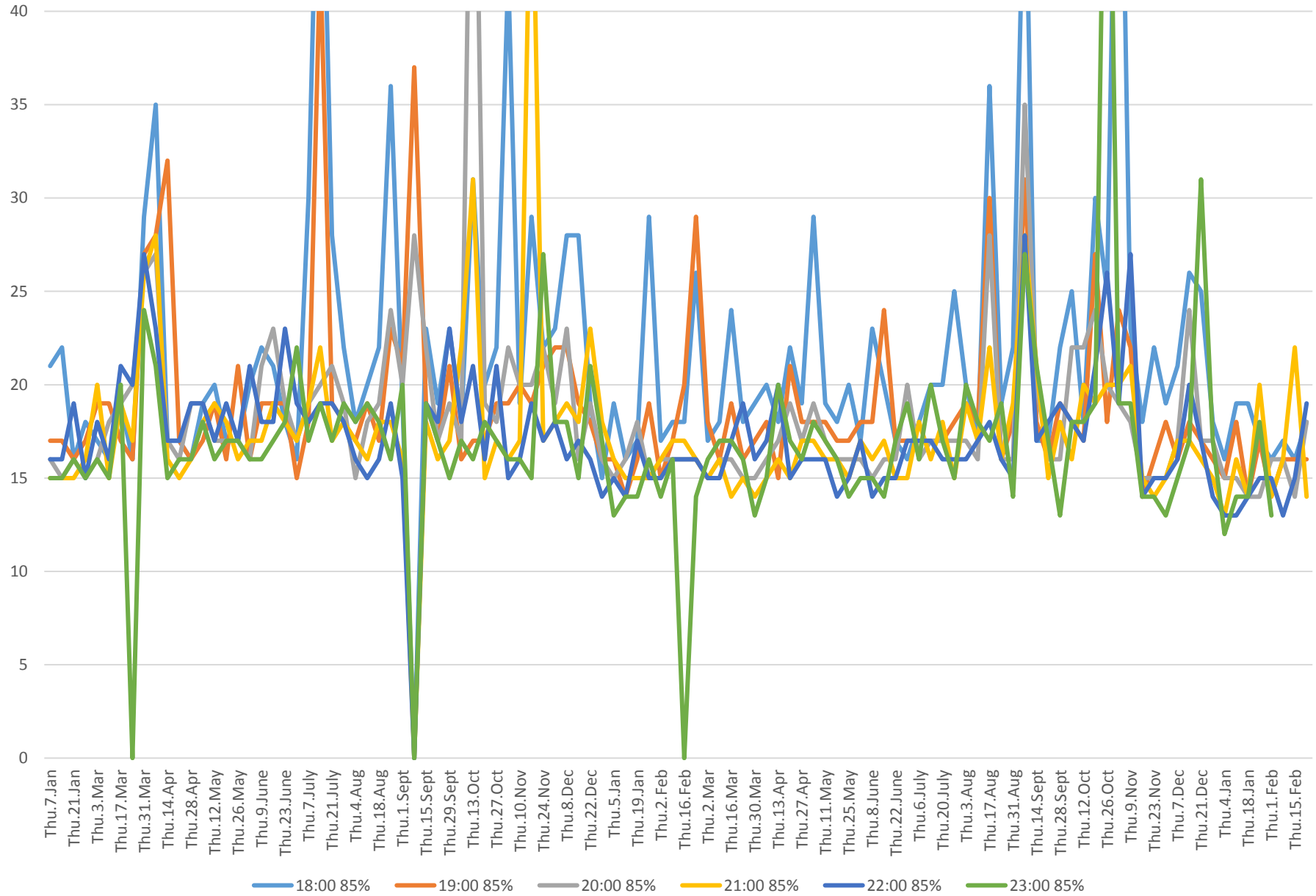
504 King Travel Times Bathurst to Jarvis Eastbound 2016 to 2018 85th Percentile Thursday Mornings



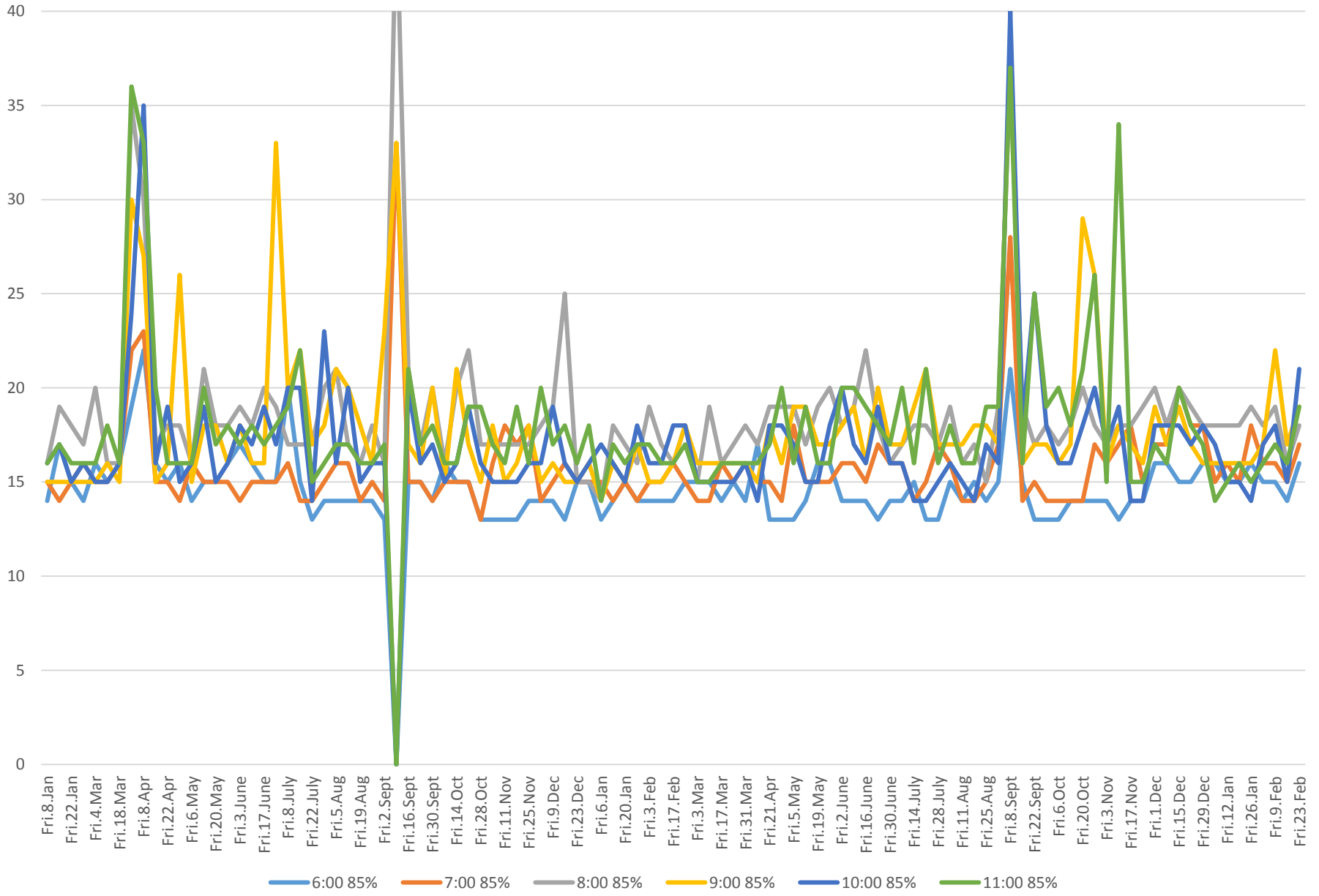
504 King Travel Times Bathurst to Jarvis Eastbound 2016 to 2018 85th Percentile Thursday Afternoons



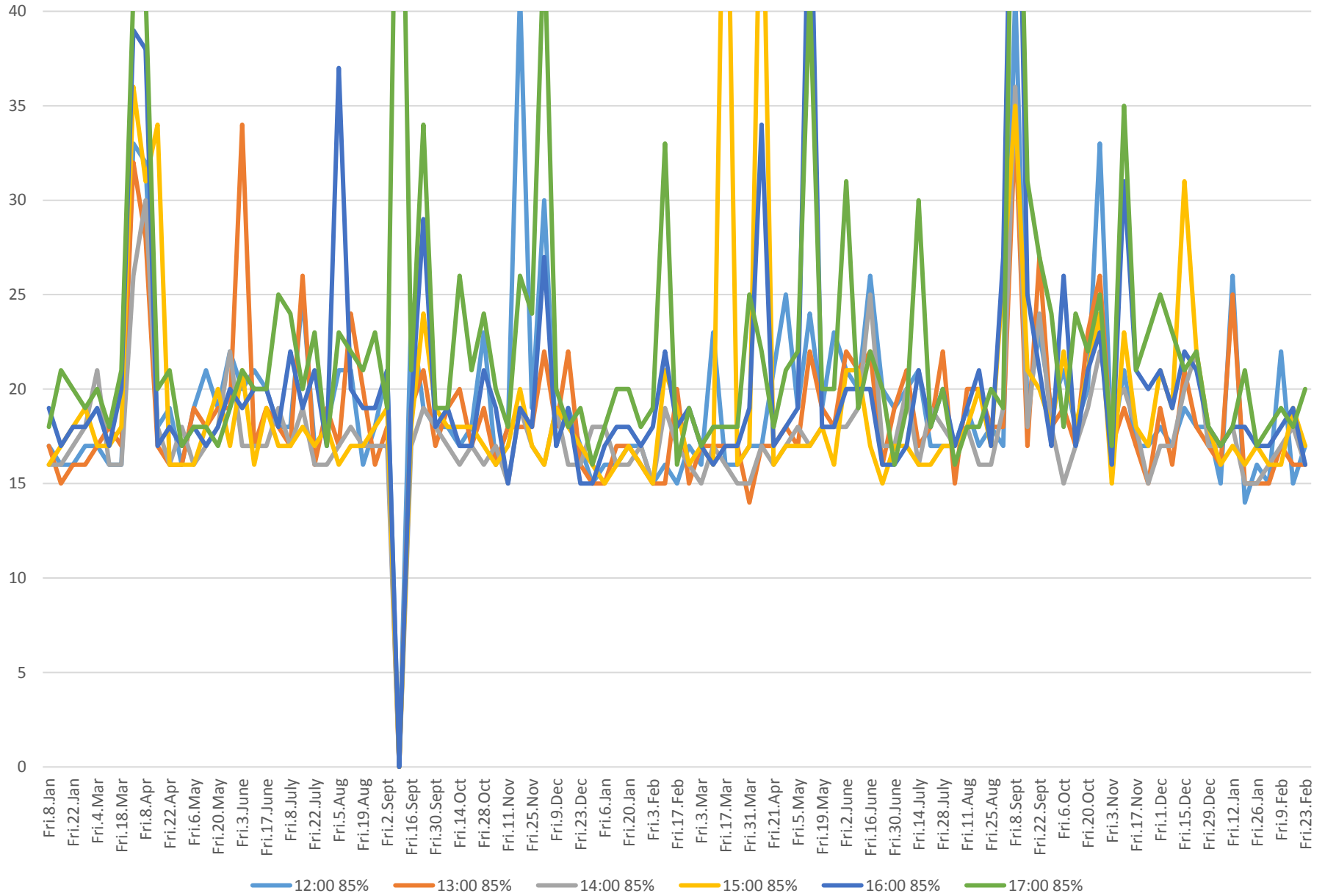
504 King Travel Times Bathurst to Jarvis Eastbound 2016 to 2018 85th Percentile Thursday Evenings



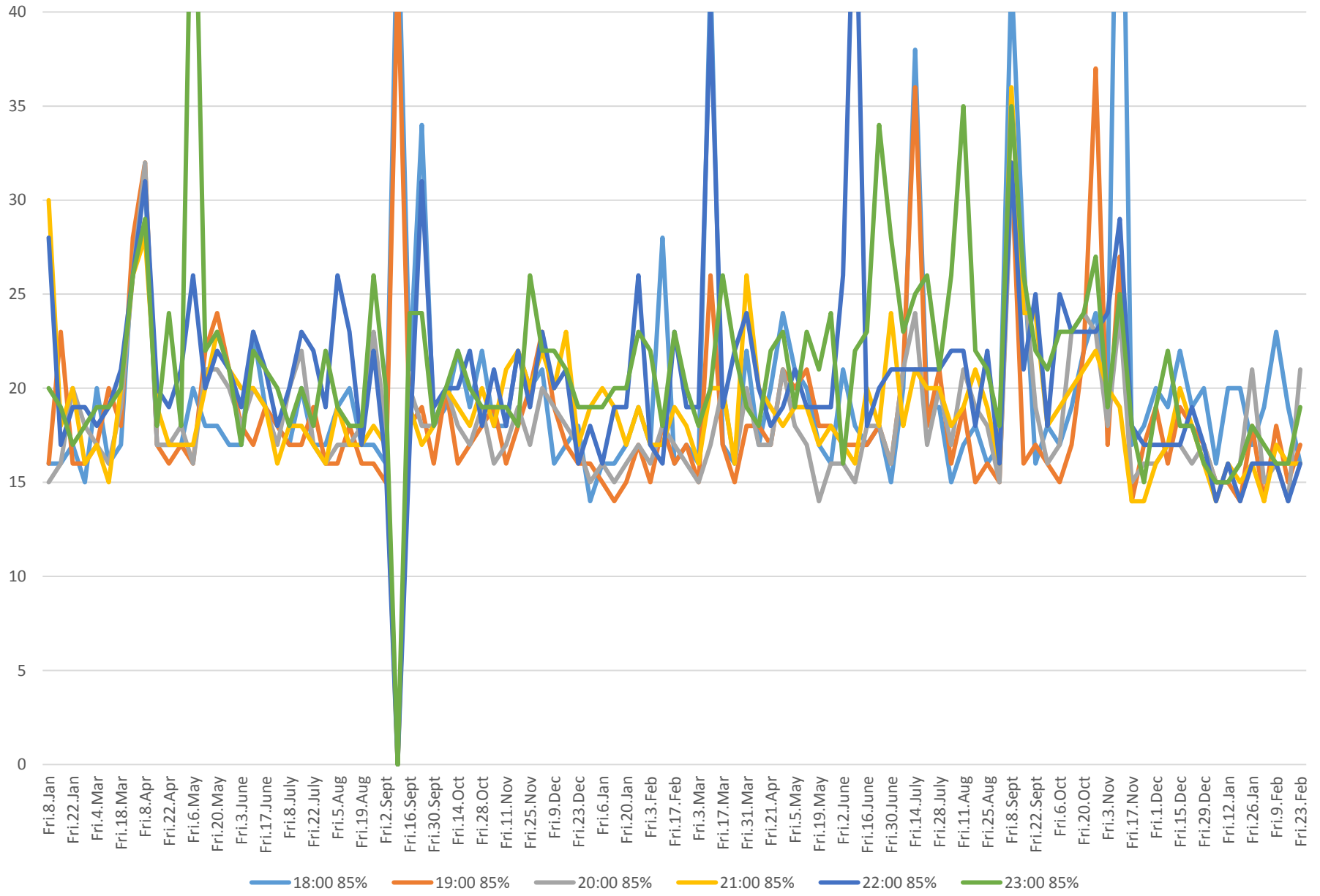
504 King Travel Times Bathurst to Jarvis Eastbound 2016 to 2018 85th Percentile Friday Mornings



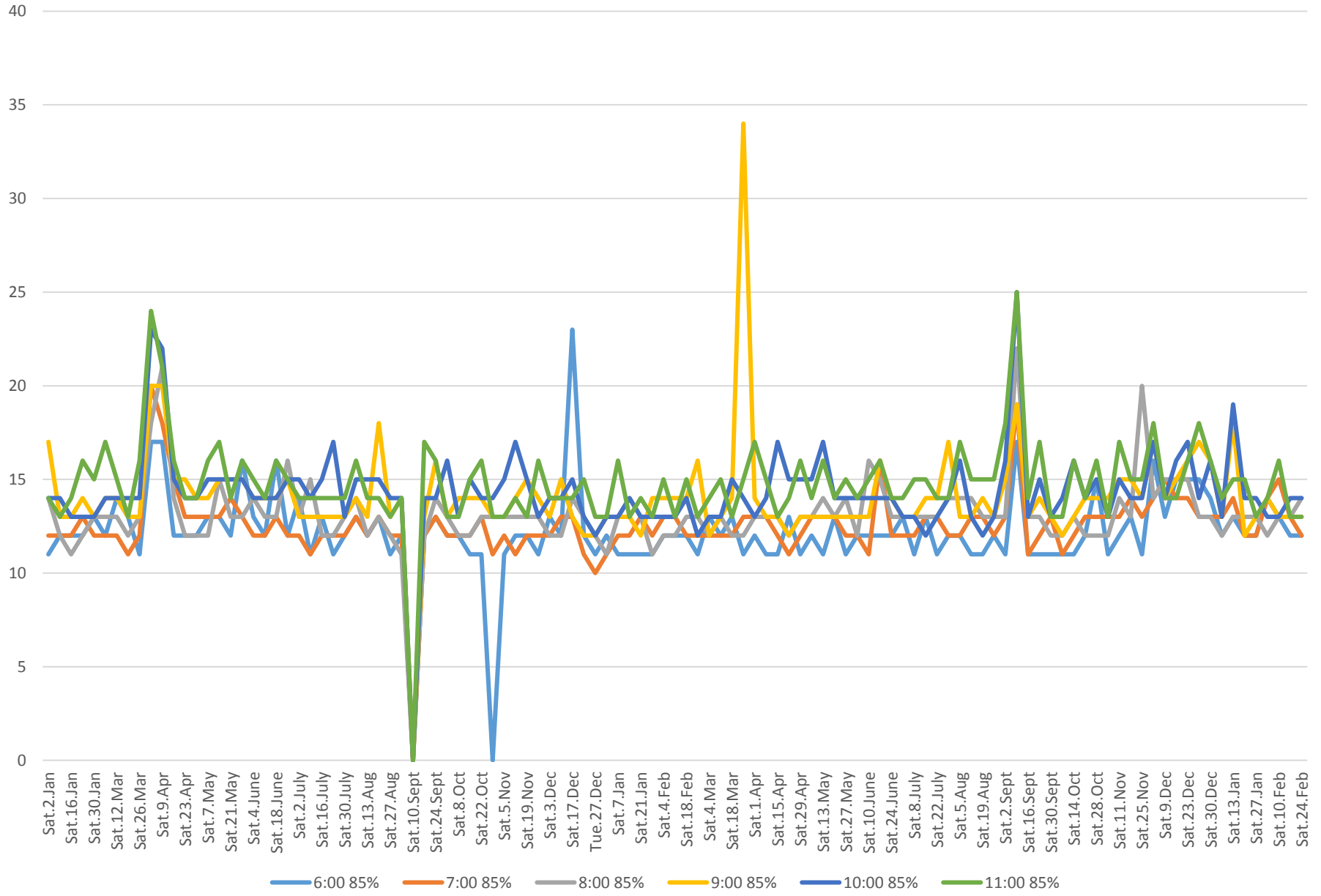
504 King Travel Times Bathurst to Jarvis Eastbound 2016 to 2018 85th Percentile Friday Afternoons



504 King Travel Times Bathurst to Jarvis Eastbound 2016 to 2018 85th Percentile Friday Evenings

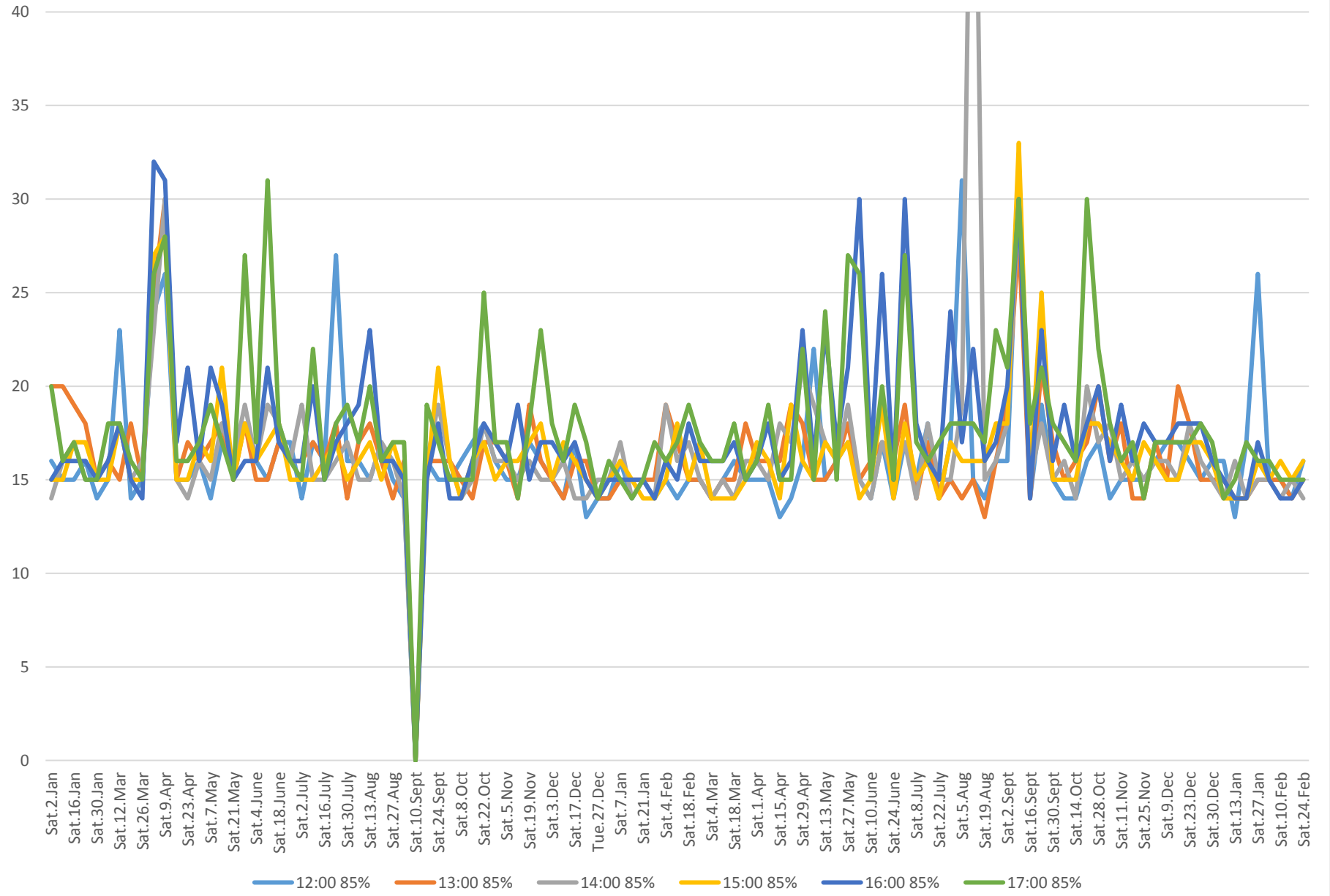


504 King Travel Times Bathurst to Jarvis Eastbound 2016 to 2018 85th Percentile Saturday Mornings

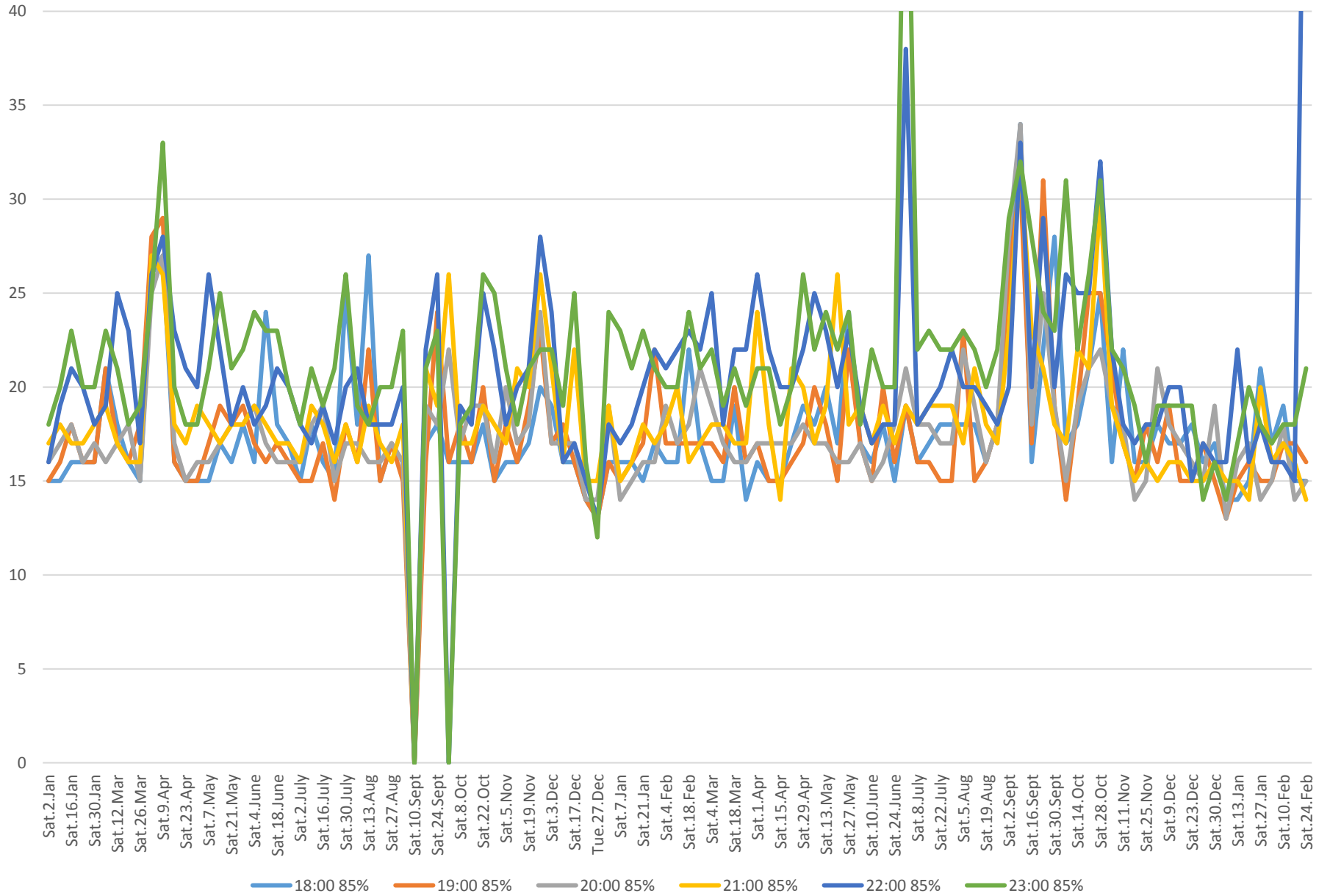




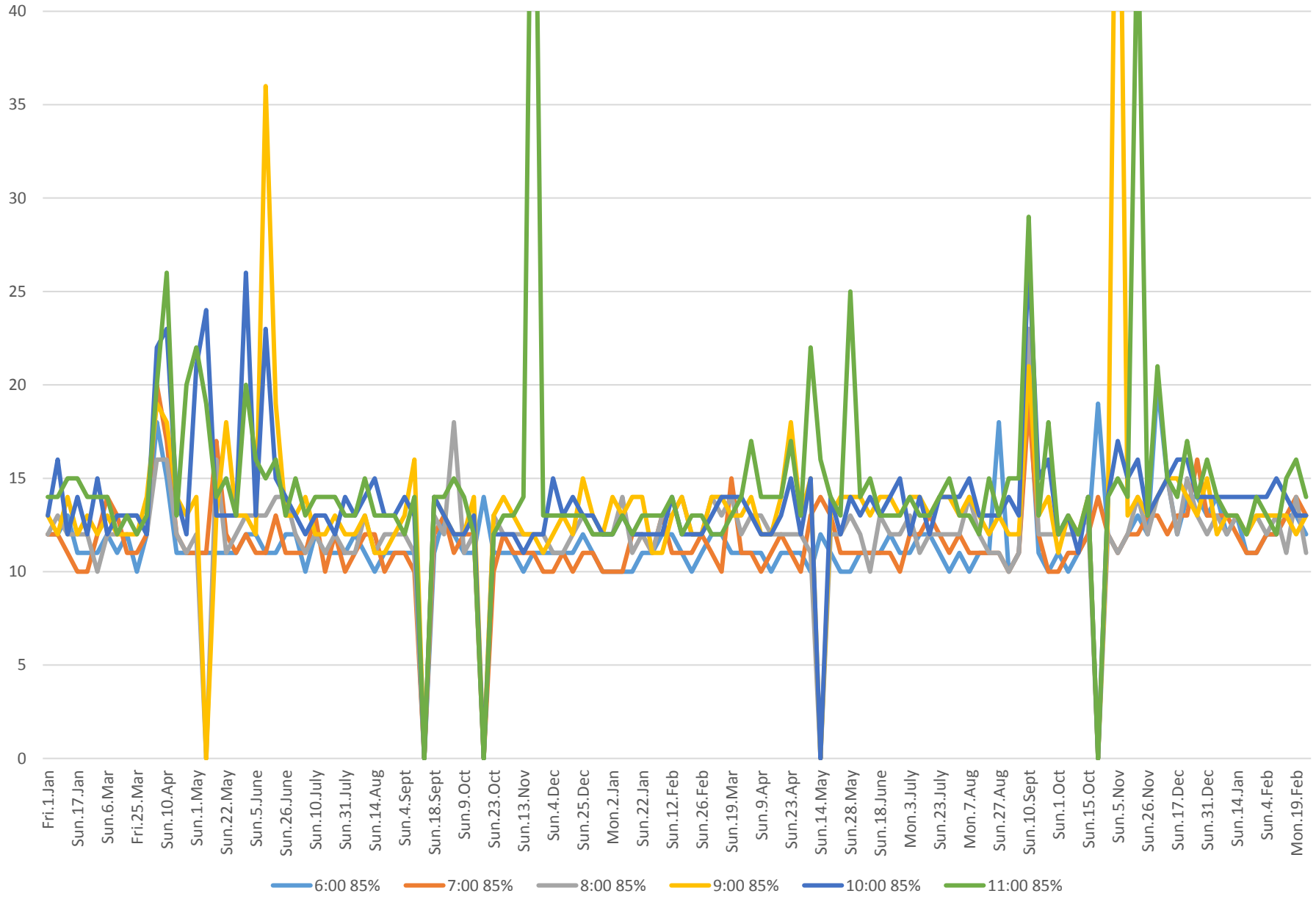
504 King Travel Times Bathurst to Jarvis Eastbound 2016 to 2018 85th Percentile Saturday Afternoons



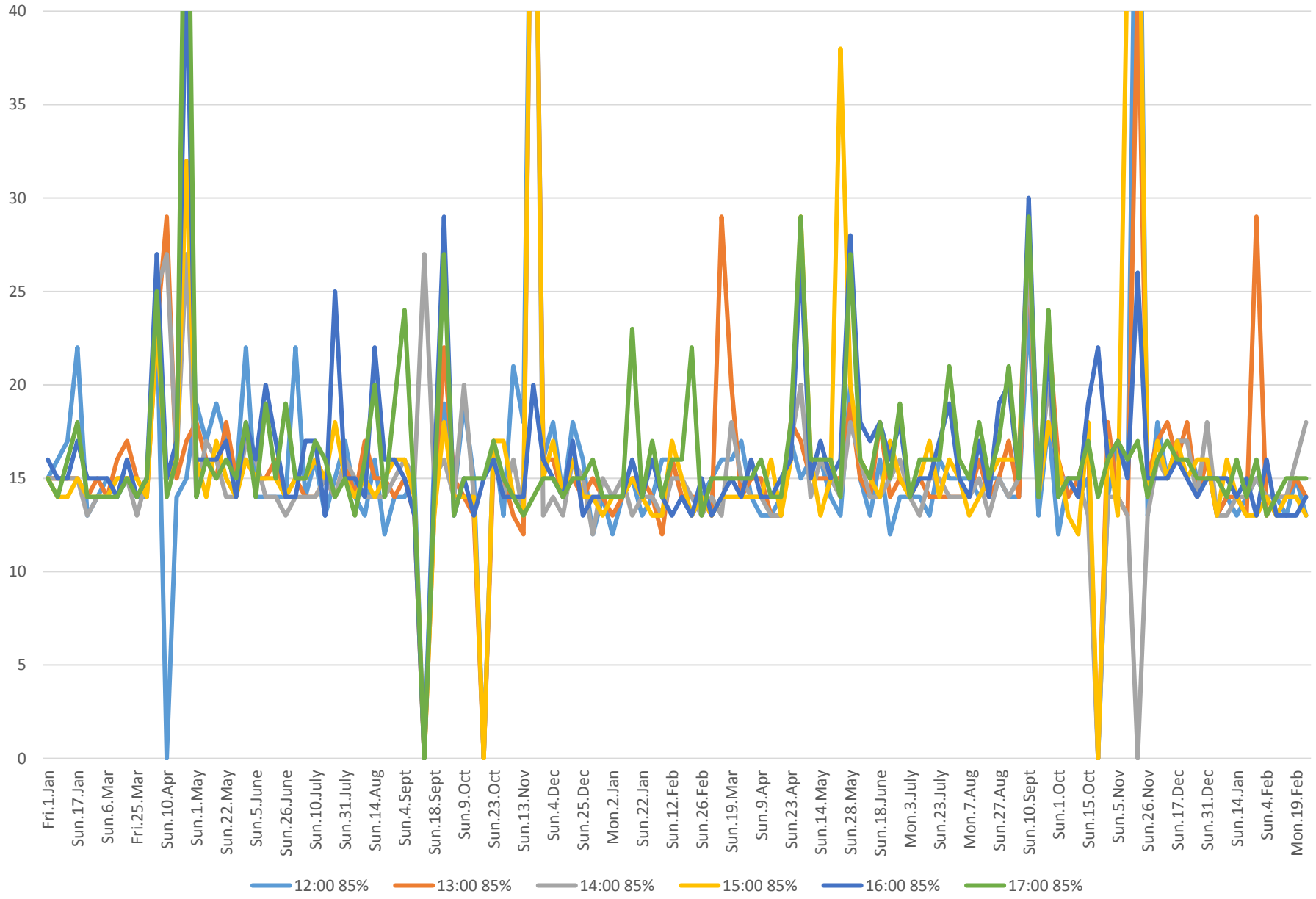
504 King Travel Times Bathurst to Jarvis Eastbound 2016 to 2018 85th Percentile Saturday Evenings



504 King Travel Times Bathurst to Jarvis Eastbound 2016 to 2018 85th Percentile Sunday Mornings



504 King Travel Times Bathurst to Jarvis Eastbound 2016 to 2018 85th Percentile Sunday Afternoons



504 King Travel Times Bathurst to Jarvis Eastbound 2016 to 2018 85th Percentile Sunday Evenings

