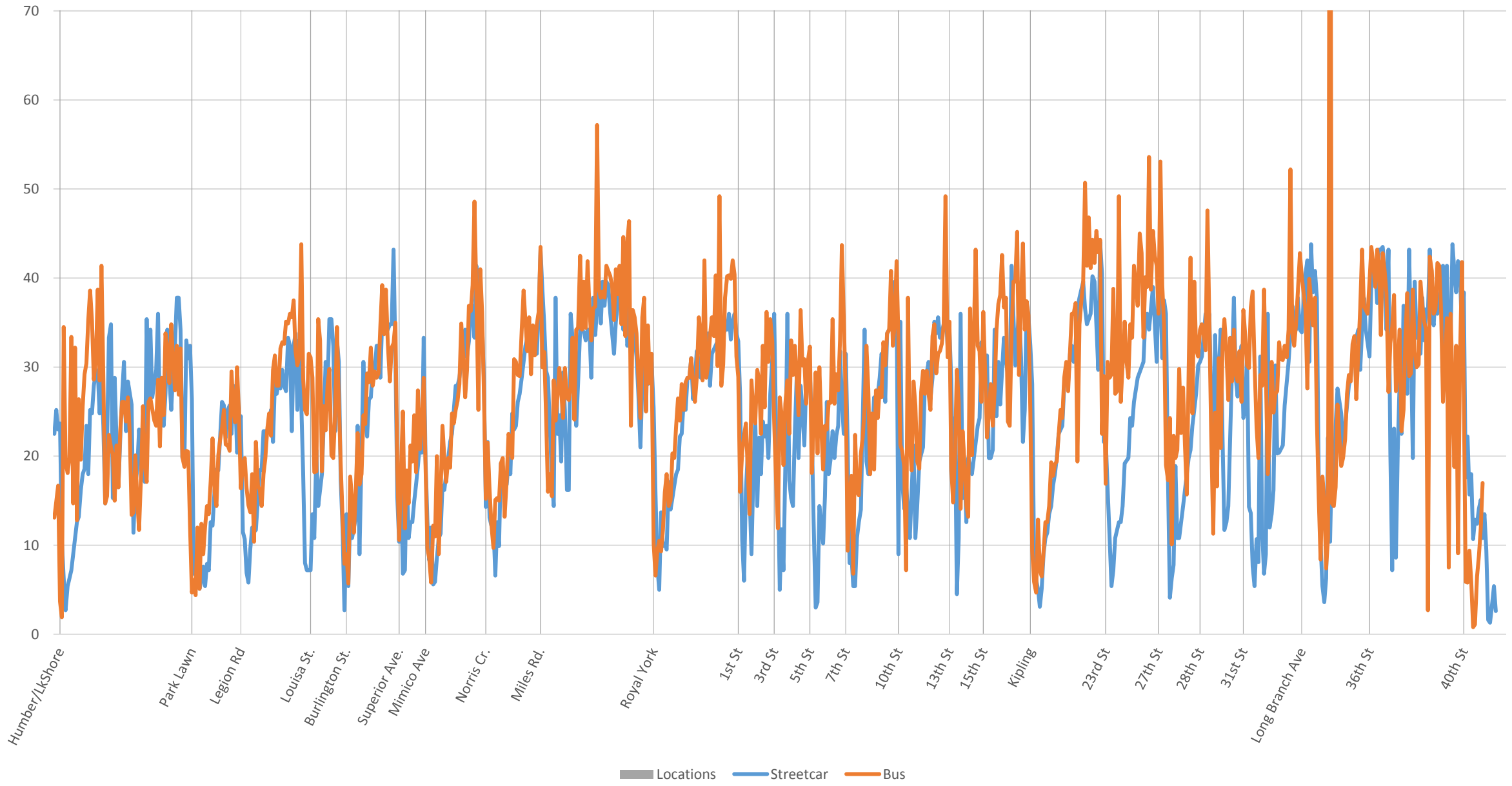
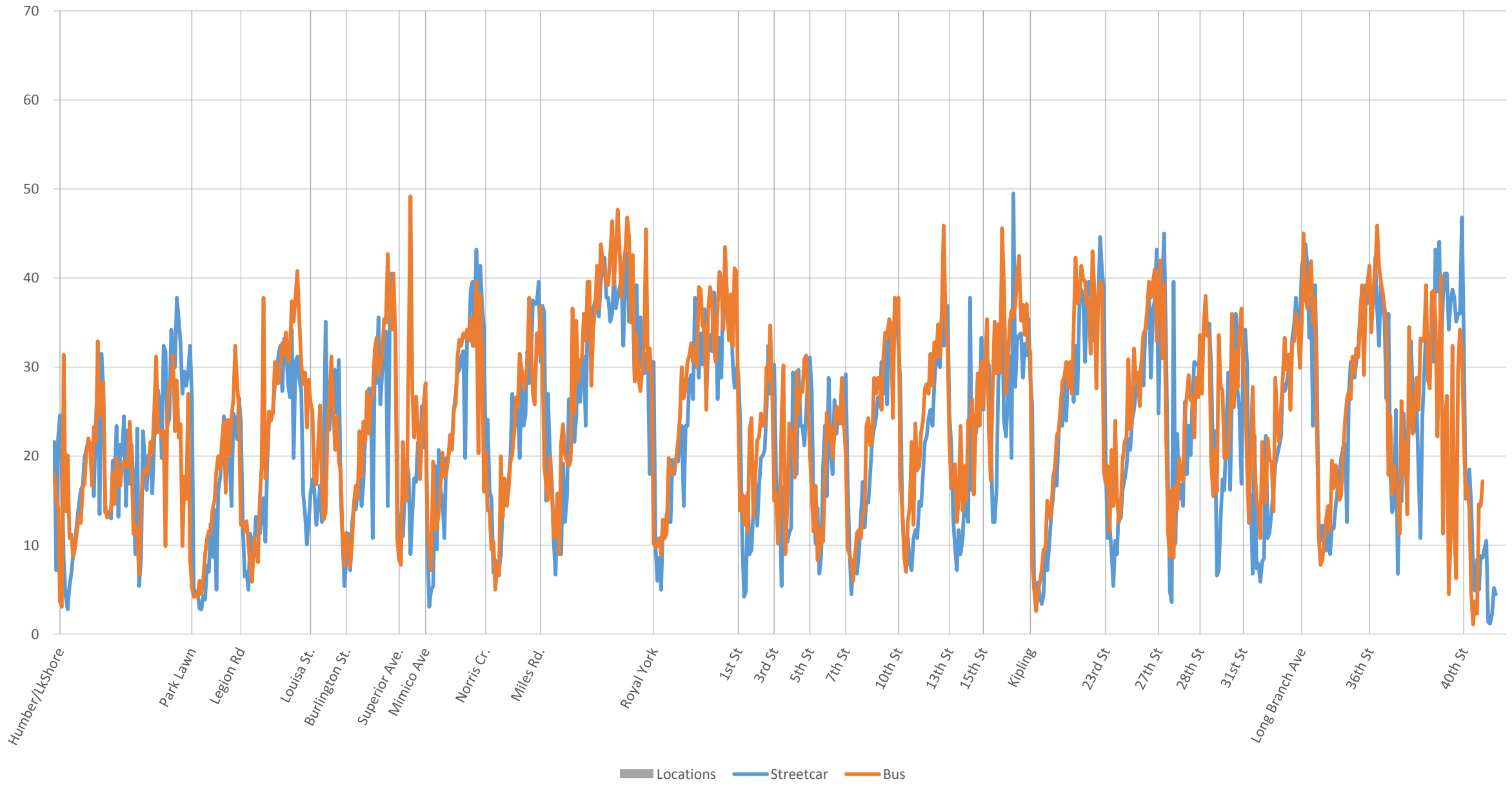


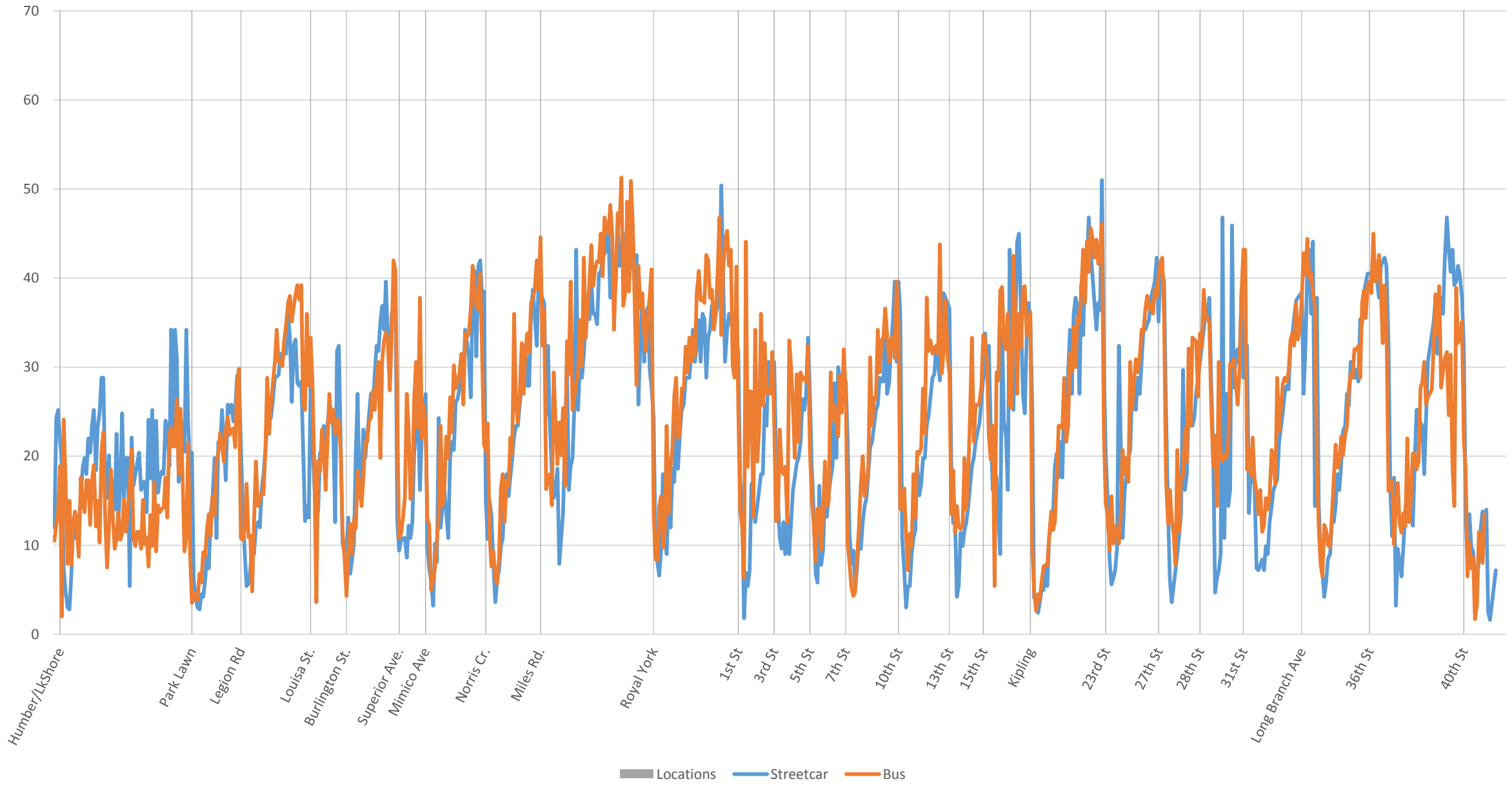
501 Queen Eastbound Streetcar (2016.11) vs Bus (2017.01) 600 to 700



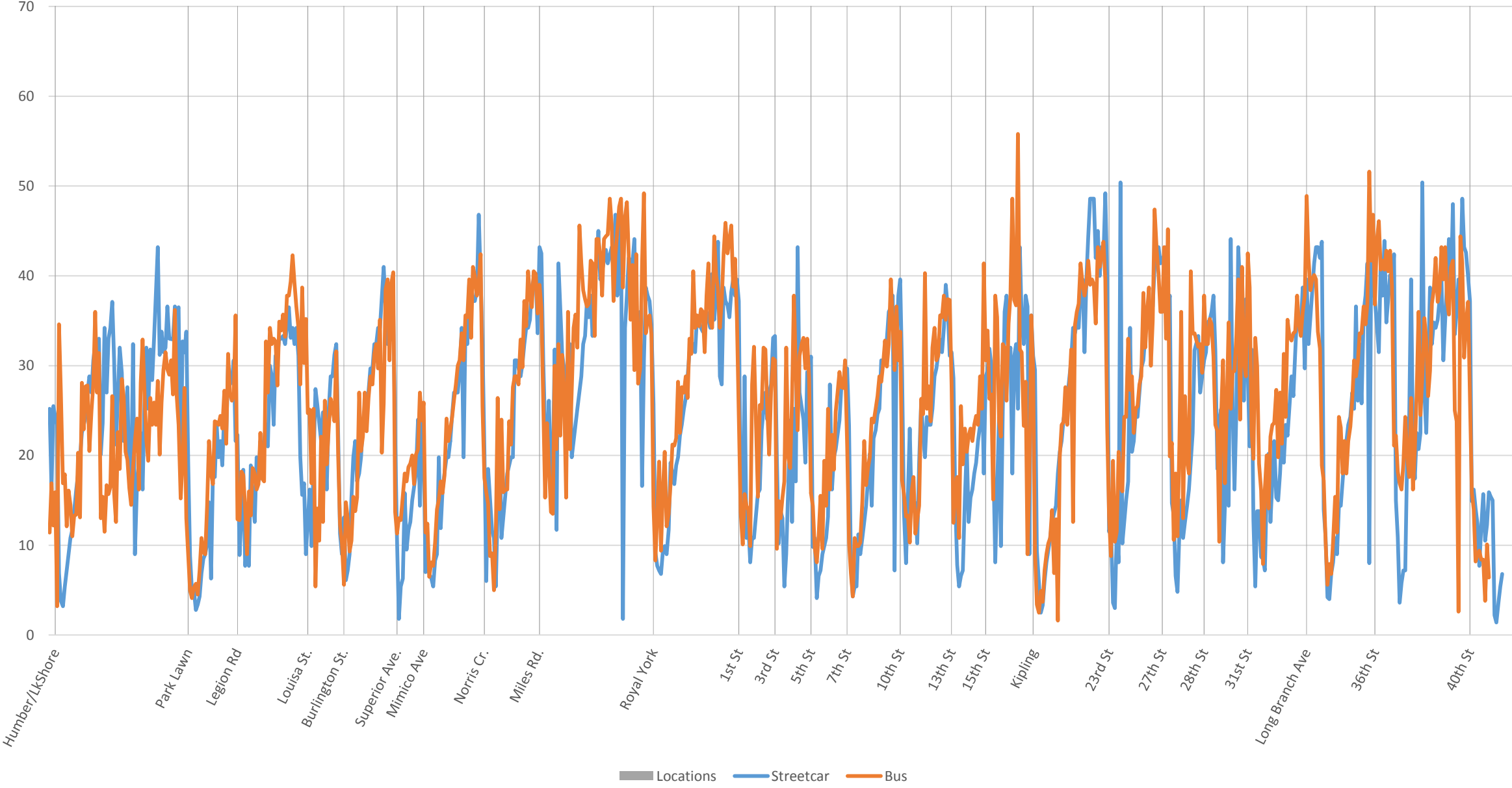
501 Queen Eastbound Streetcar (2016.11) vs Bus (2017.01) 700 to 800



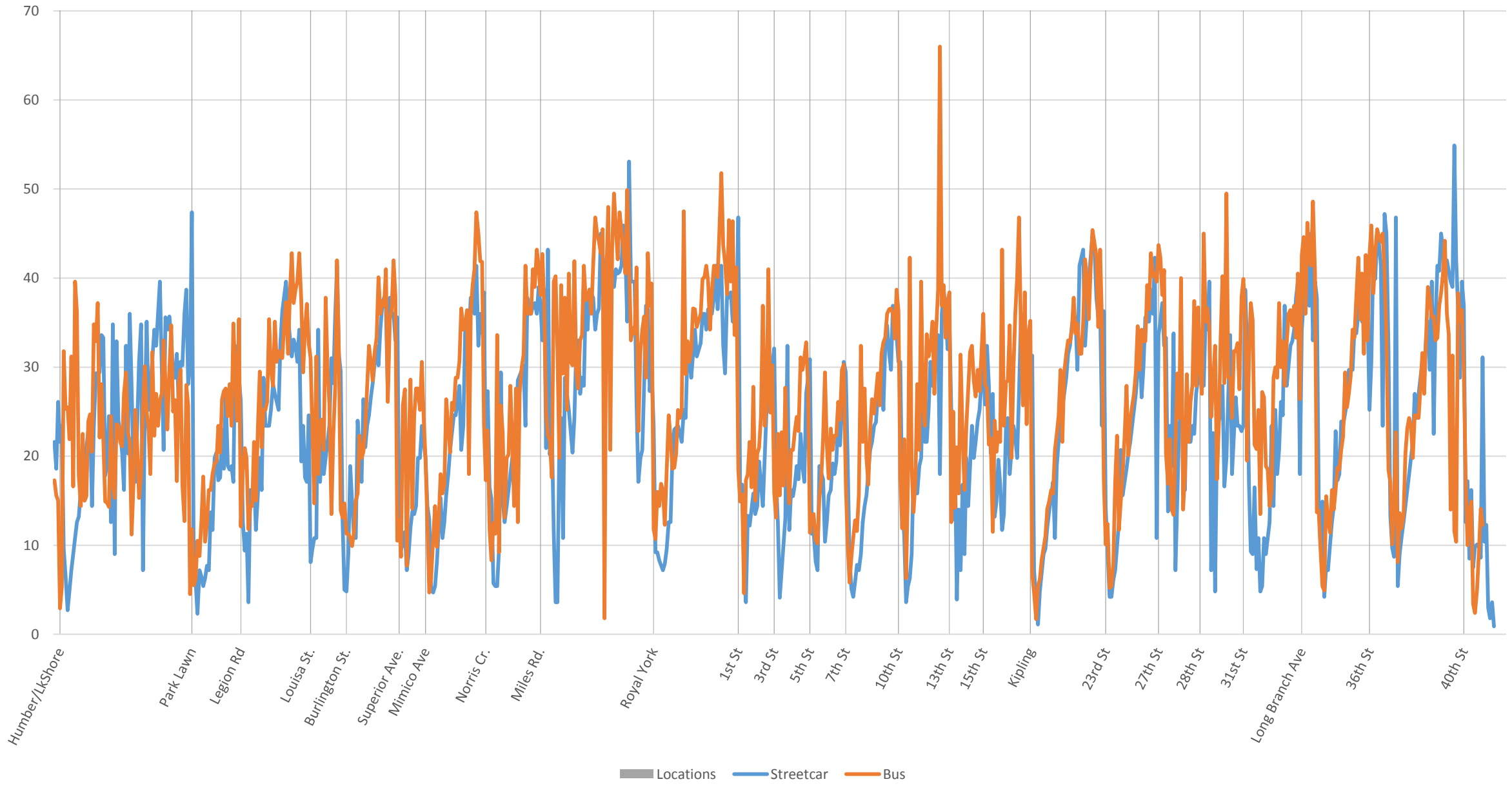
501 Queen Eastbound Streetcar (2016.11) vs Bus (2017.01) 800 to 900



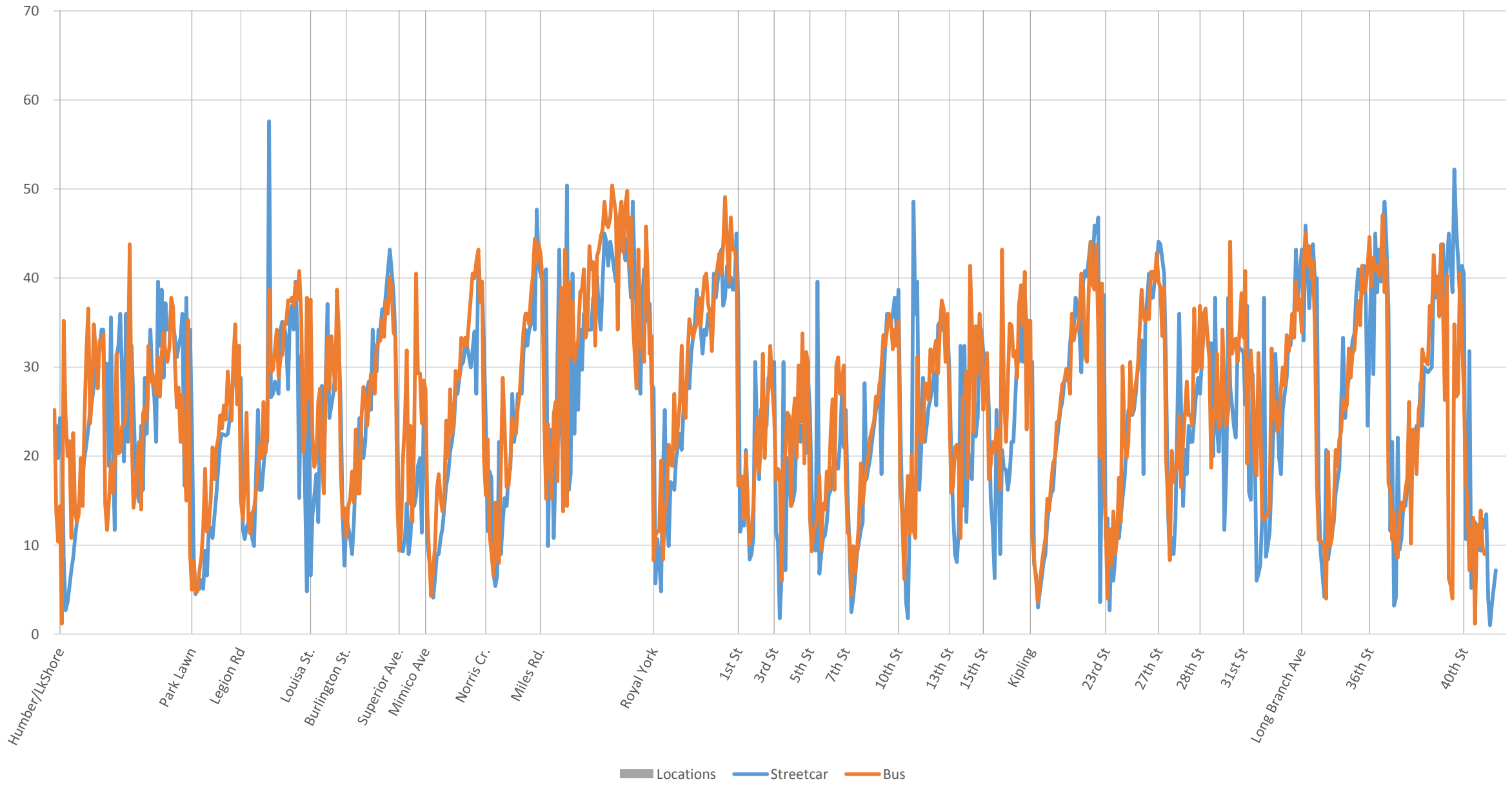
501 Queen Eastbound Streetcar (2016.11) vs Bus (2017.01) 900 to 1000



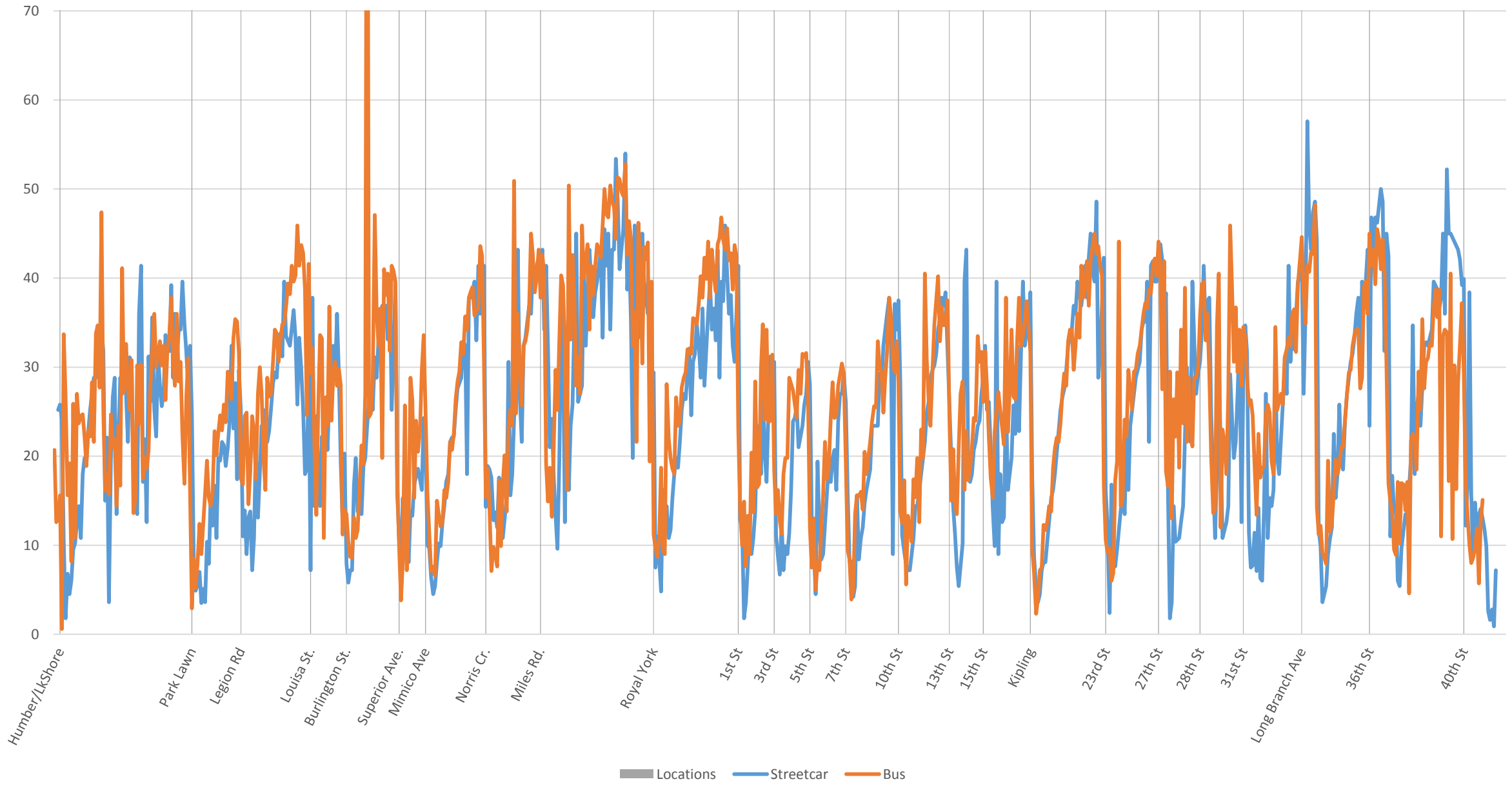
501 Queen Eastbound Streetcar (2016.11) vs Bus (2017.01) 1000 to 1100



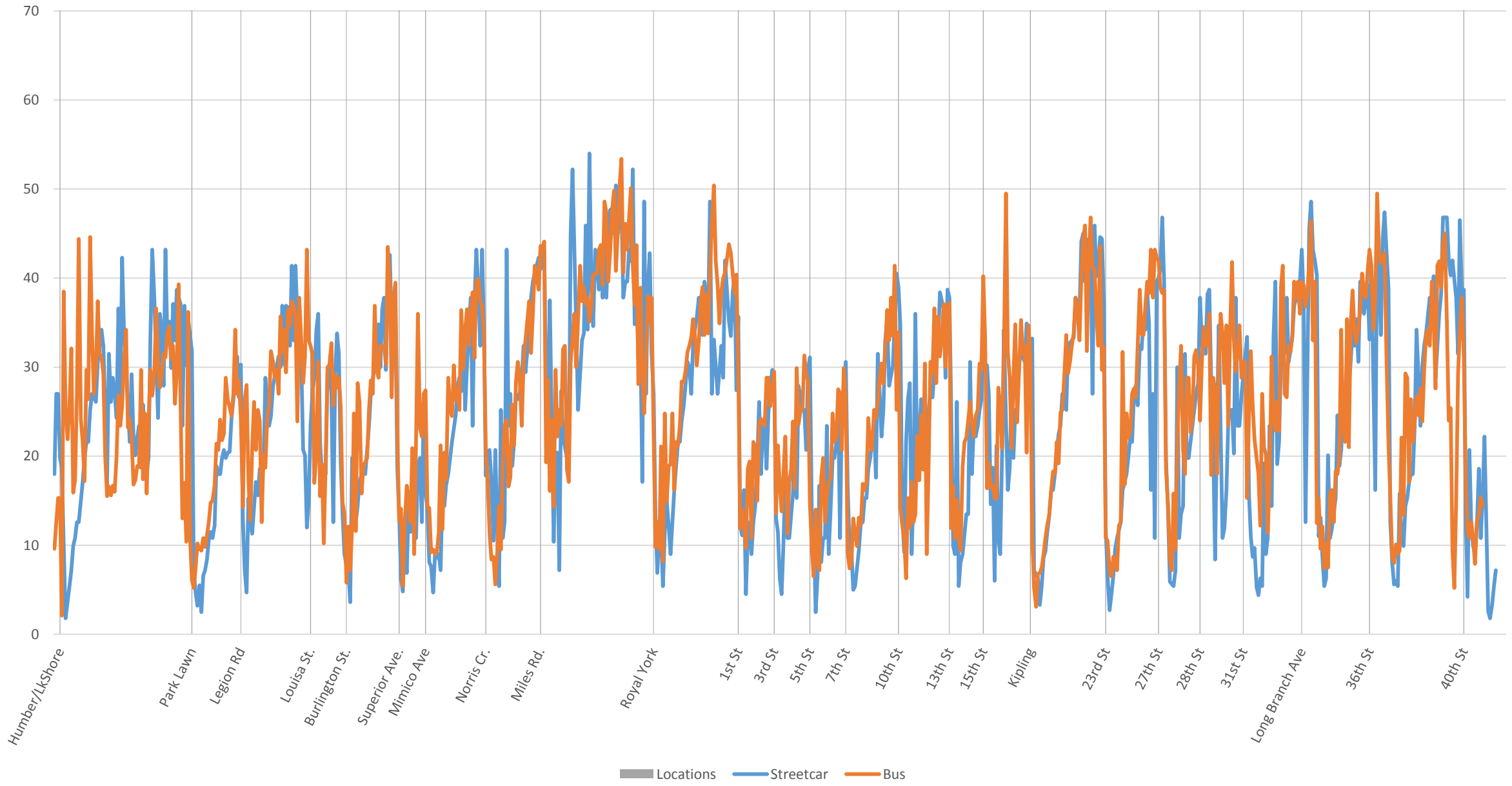
501 Queen Eastbound Streetcar (2016.11) vs Bus (2017.01) 1100 to 1200



501 Queen Eastbound Streetcar (2016.11) vs Bus (2017.01) 1200 to 1300

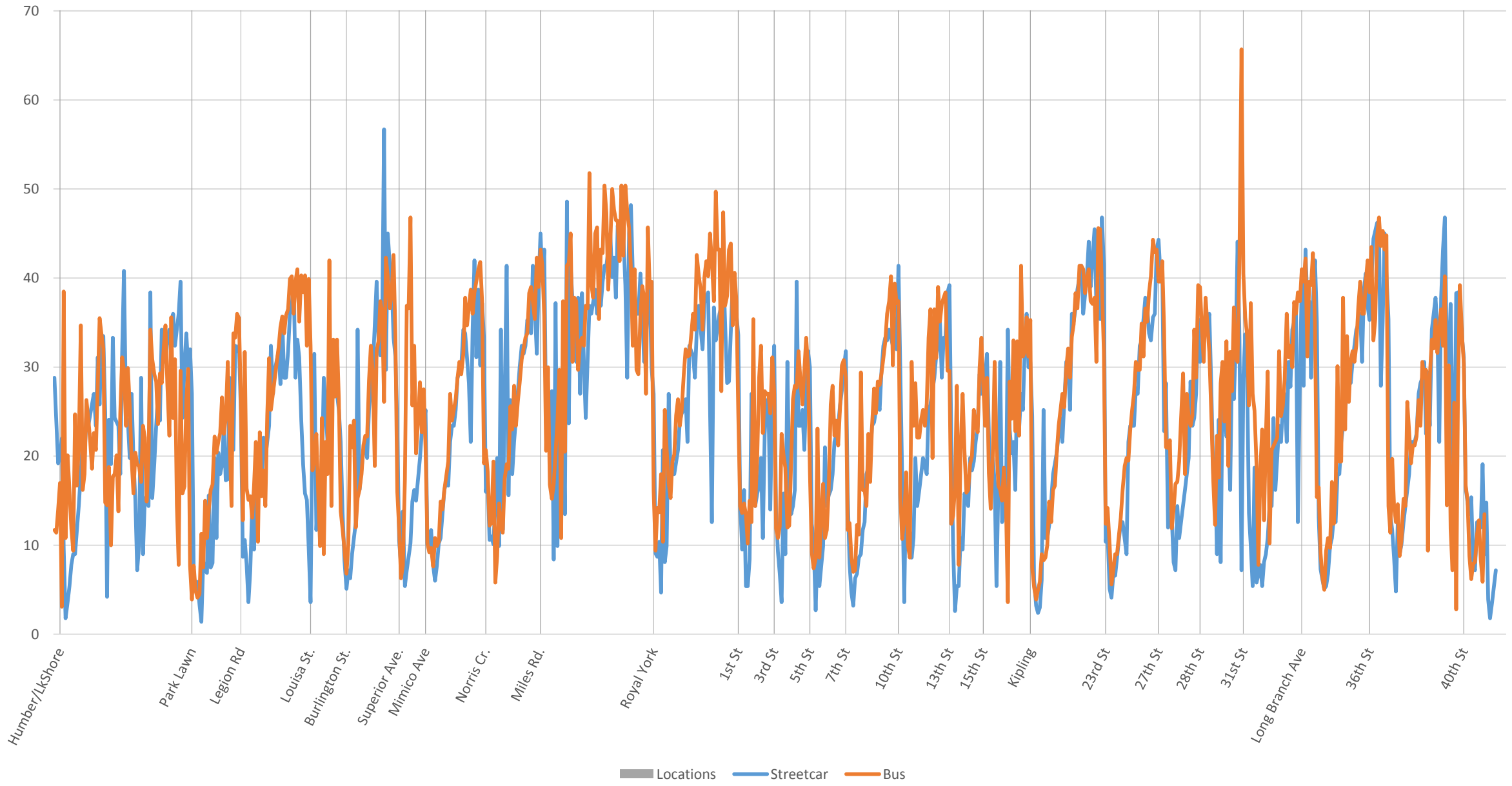


501 Queen Eastbound Streetcar (2016.11) vs Bus (2017.01) 1300 to 1400

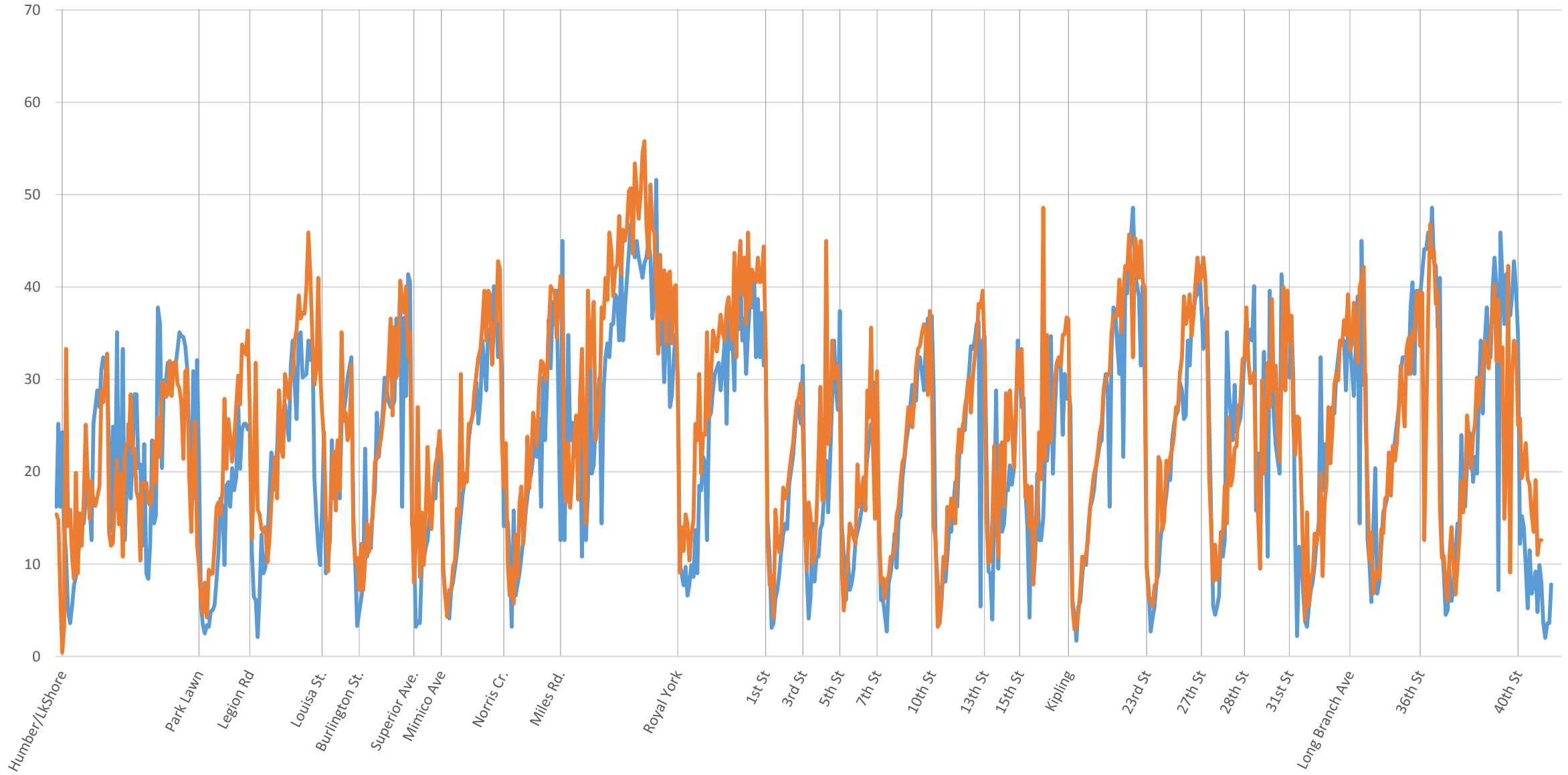




501 Queen Eastbound Streetcar (2016.11) vs Bus (2017.01) 1400 to 1500

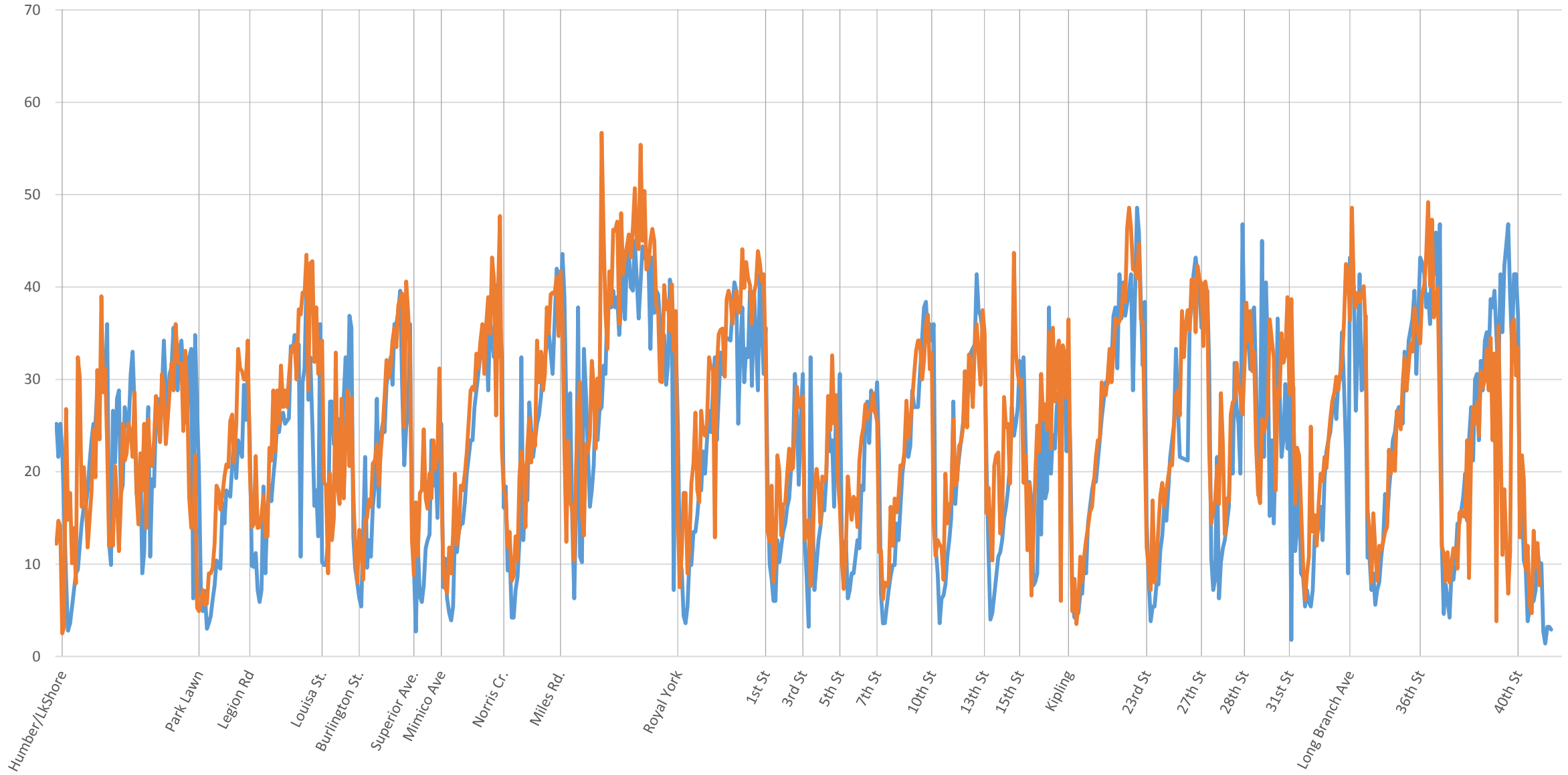


501 Queen Eastbound Streetcar (2016.11) vs Bus (2017.01) 1500 to 1600



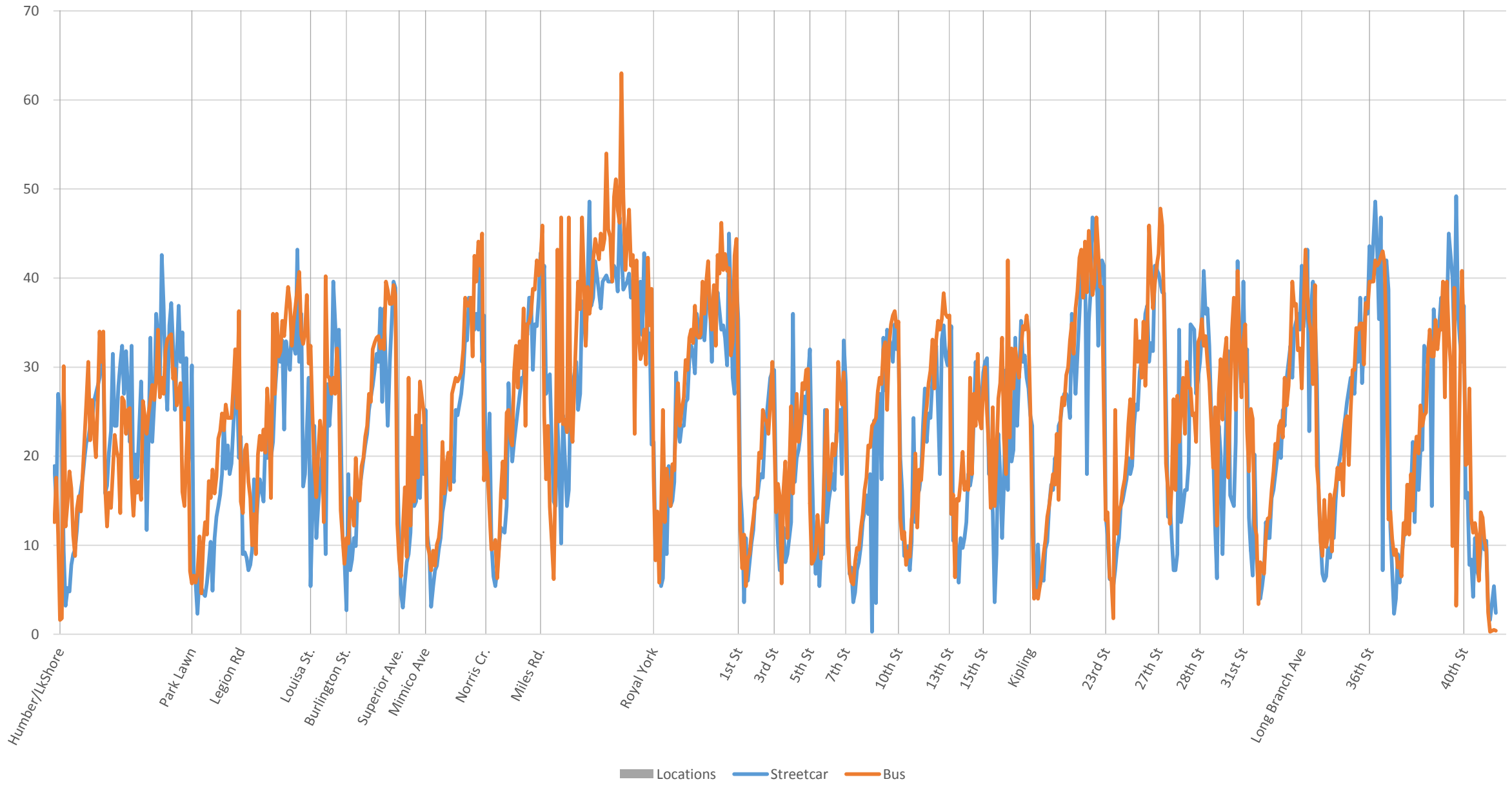
Locations Streetcar Bus

501 Queen Eastbound Streetcar (2016.11) vs Bus (2017.01) 1600 to 1700

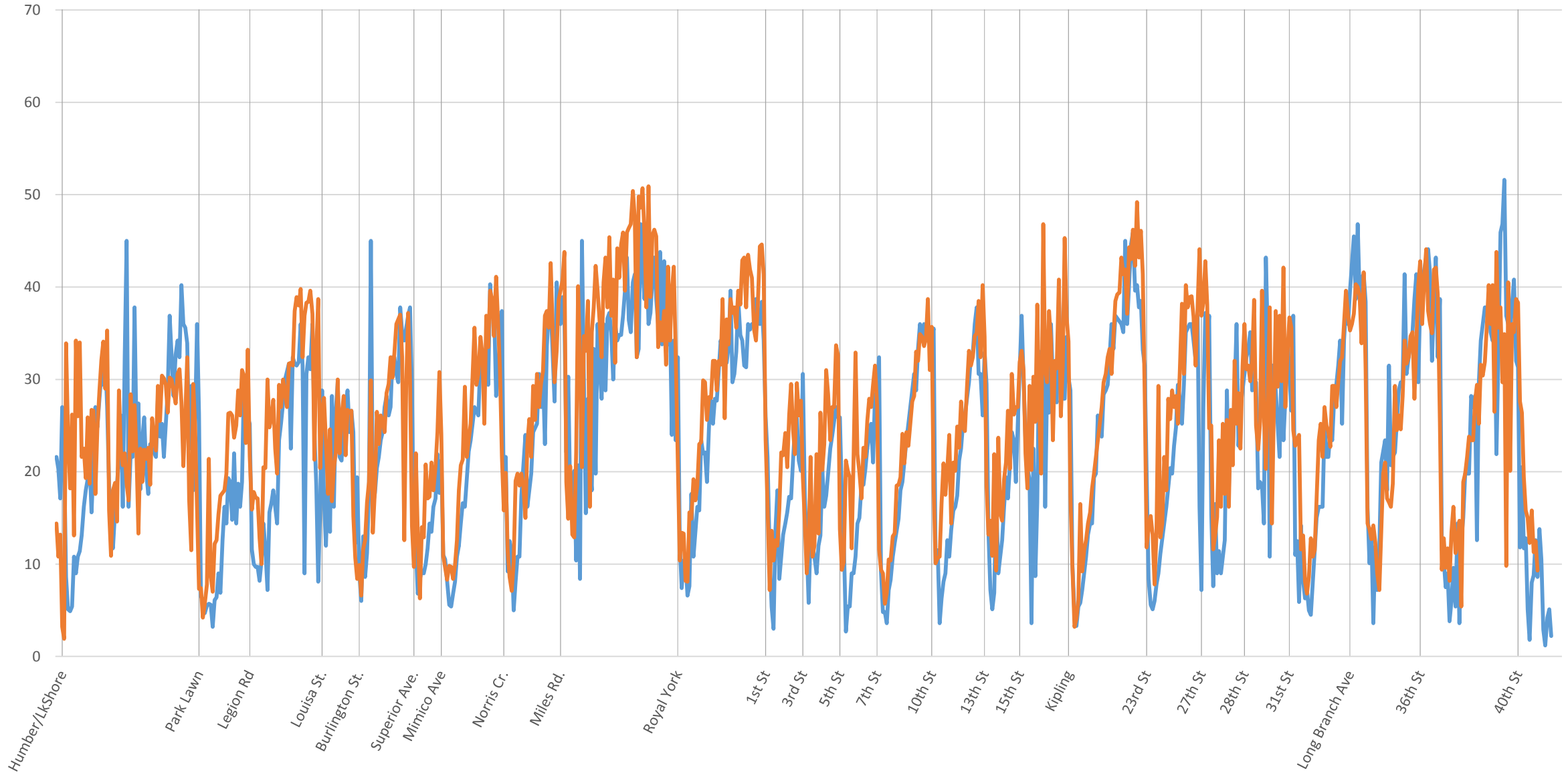


Locations Streetcar Bus

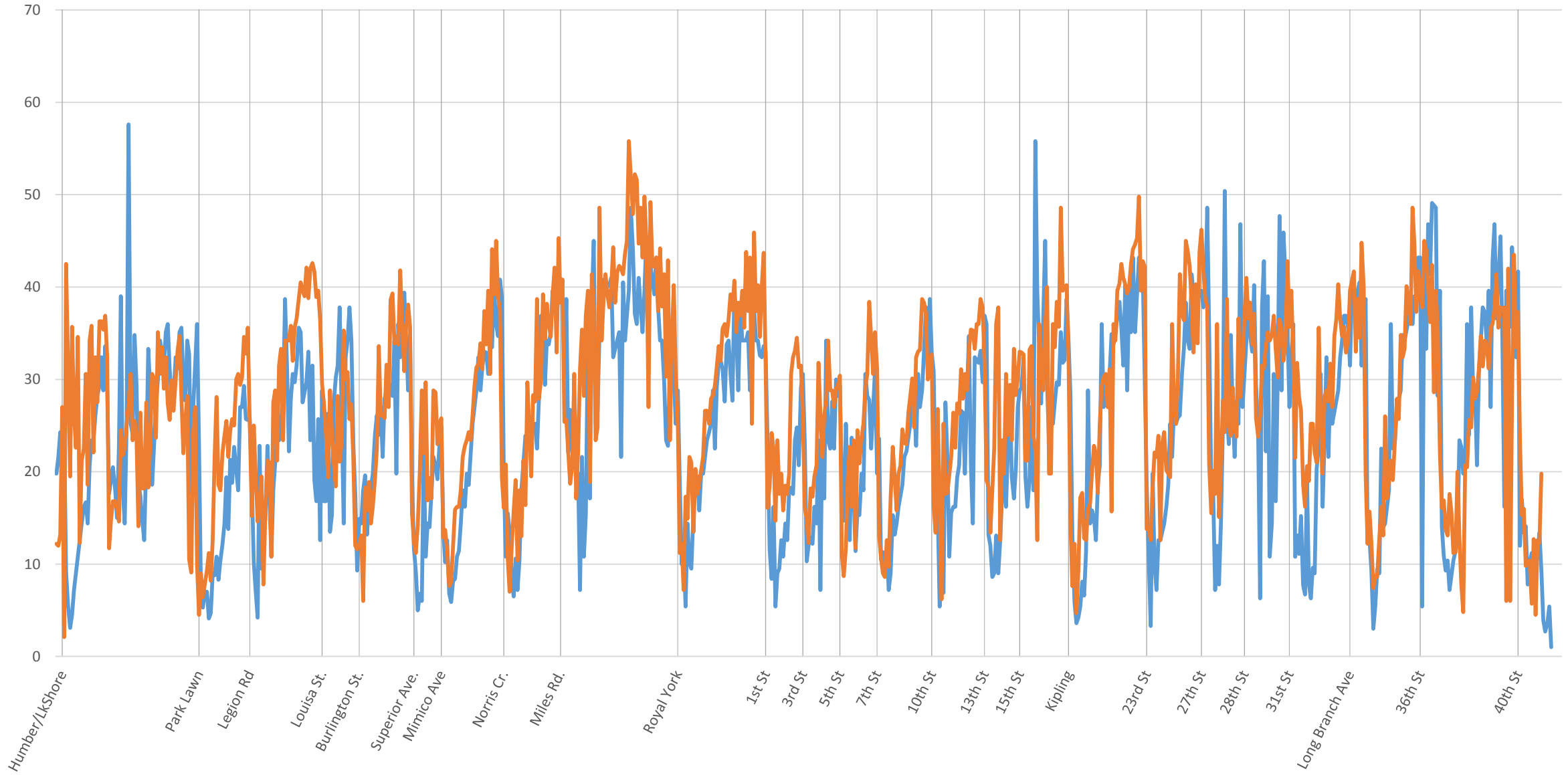
501 Queen Eastbound Streetcar (2016.11) vs Bus (2017.01) 1700 to 1800



501 Queen Eastbound Streetcar (2016.11) vs Bus (2017.01) 1800 to 1900

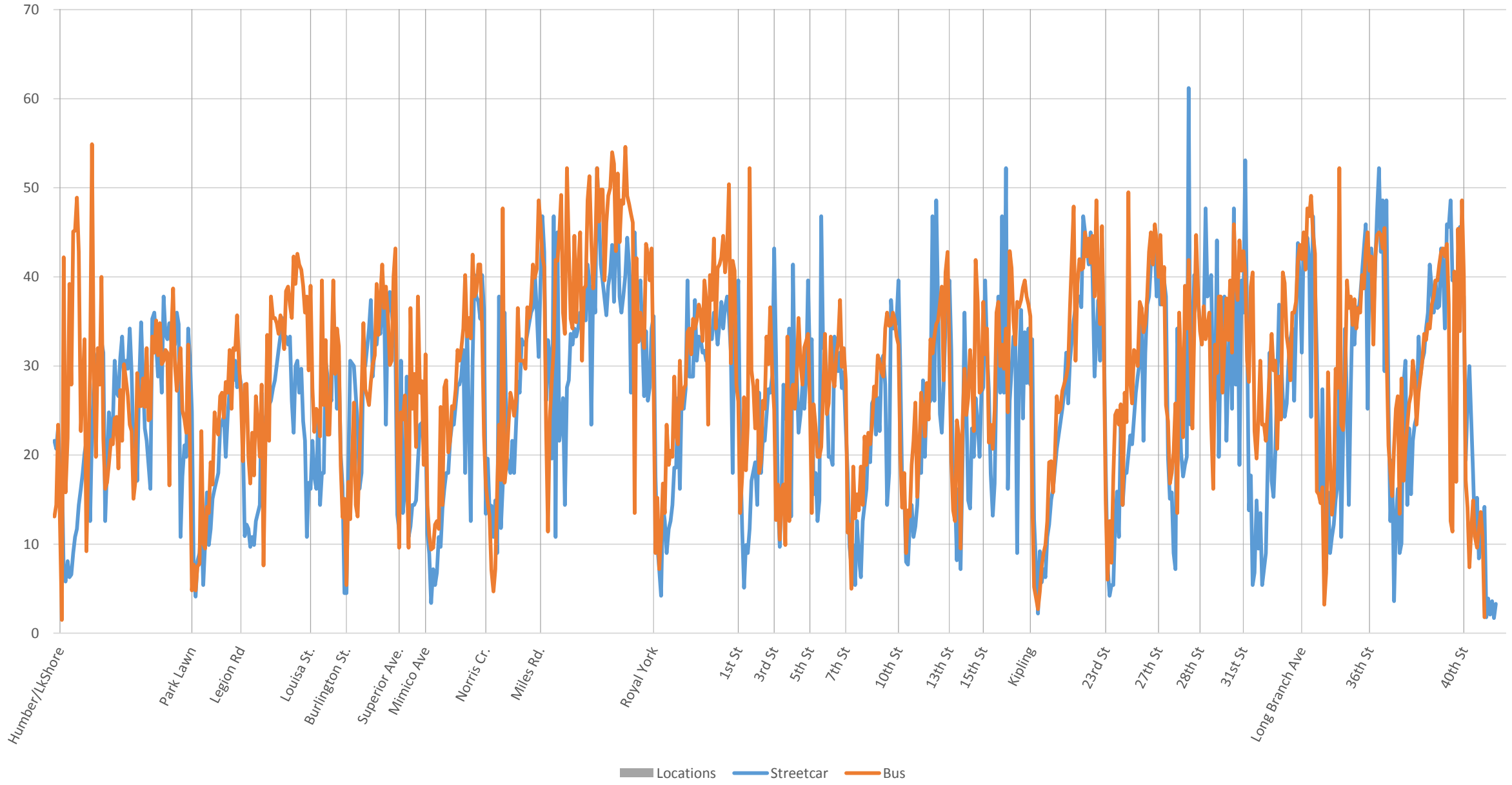


501 Queen Eastbound Streetcar (2016.11) vs Bus (2017.01) 1900 to 2000

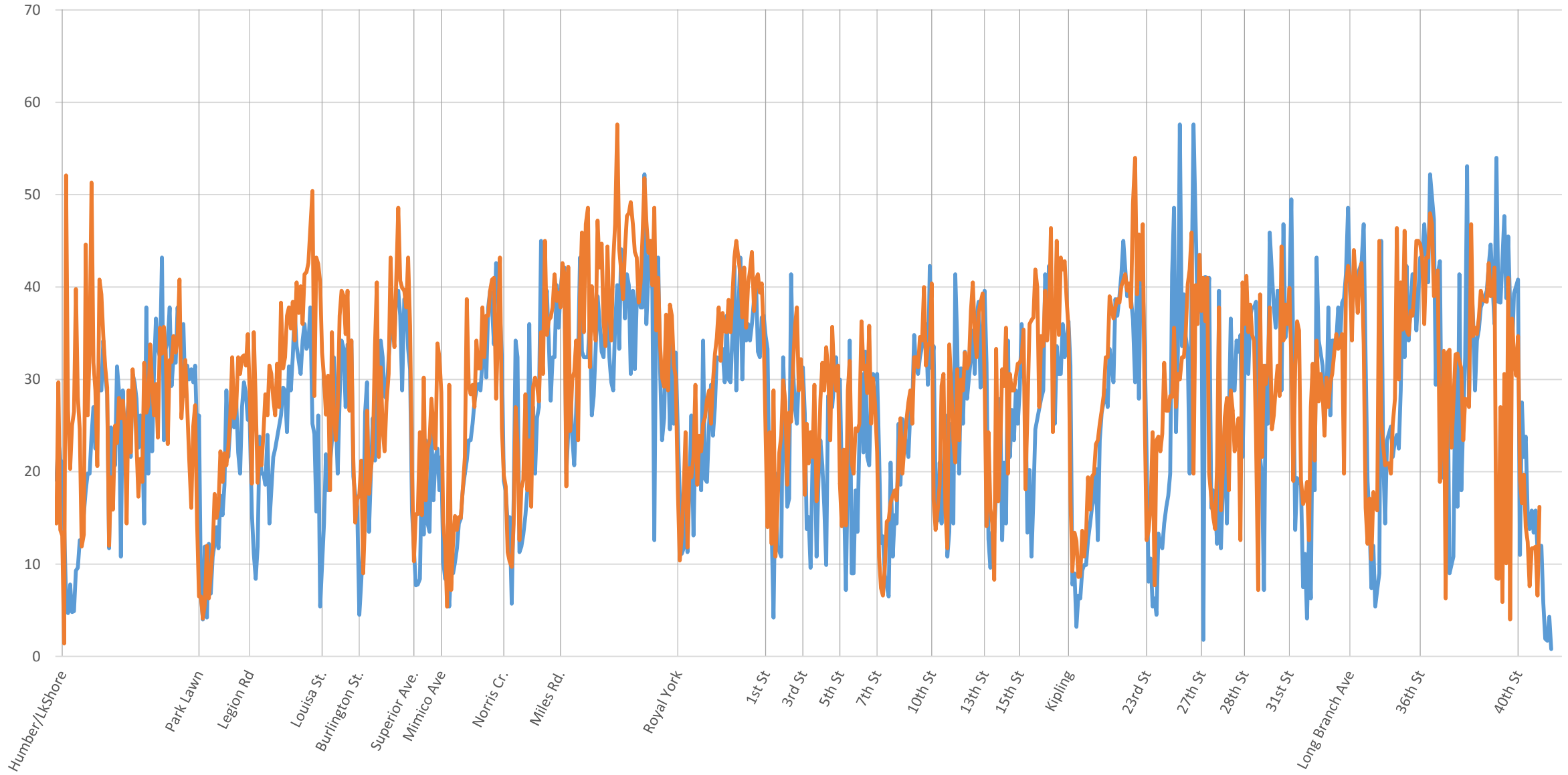


Locations Streetcar Bus

501 Queen Eastbound Streetcar (2016.11) vs Bus (2017.01) 2000 to 2100



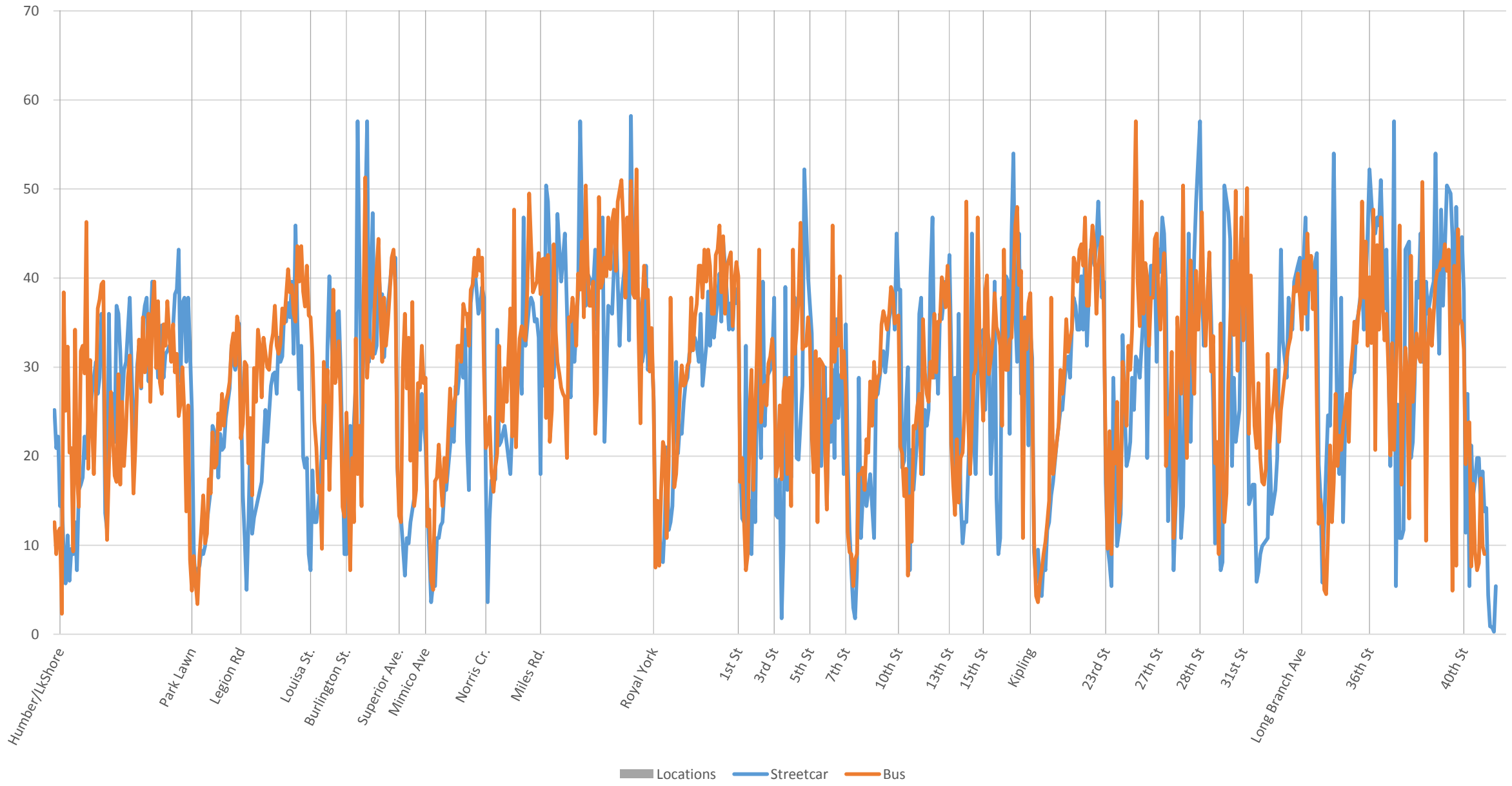
501 Queen Eastbound Streetcar (2016.11) vs Bus (2017.01) 2100 to 2200



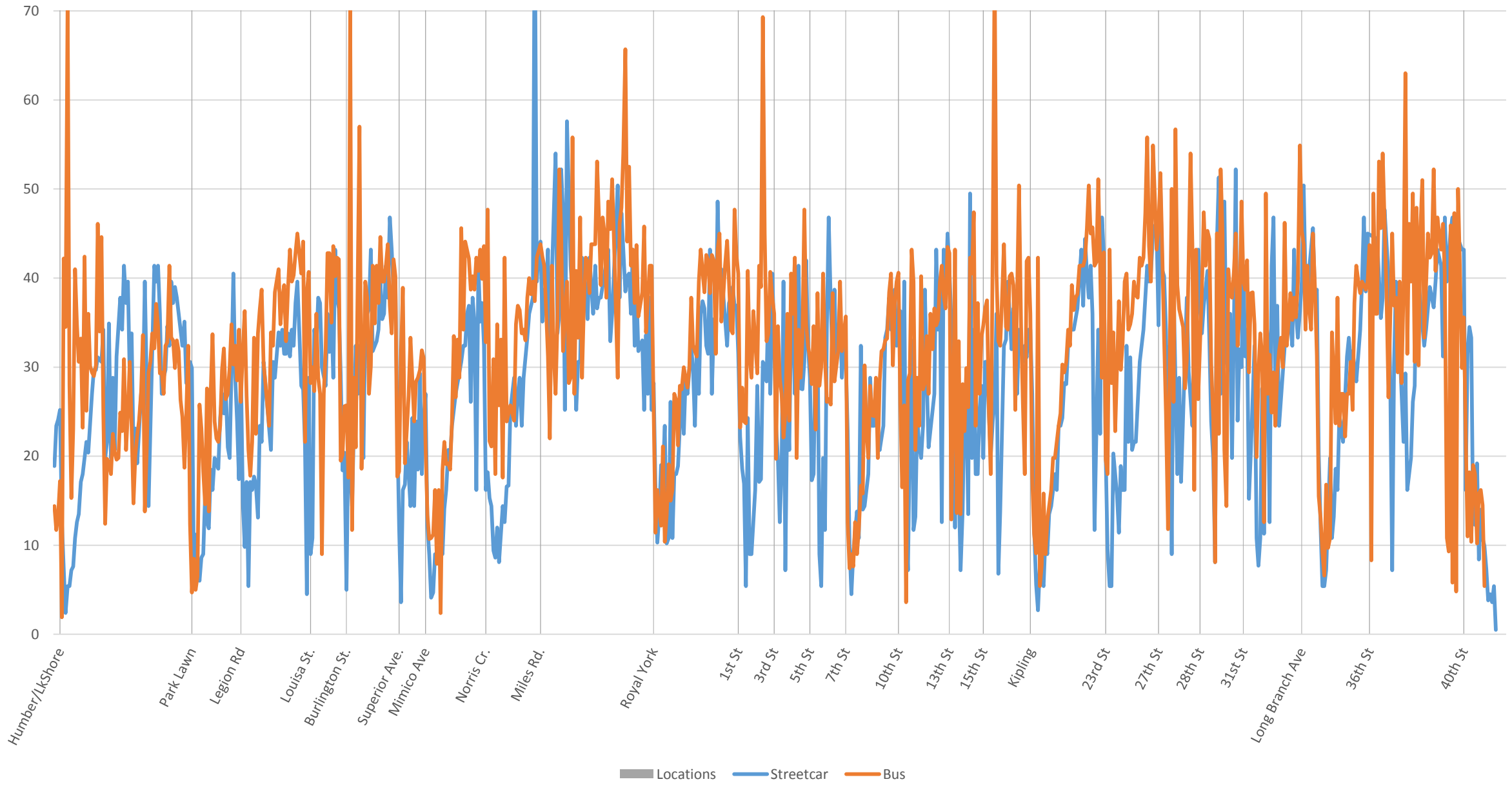
Locations Streetcar Bus



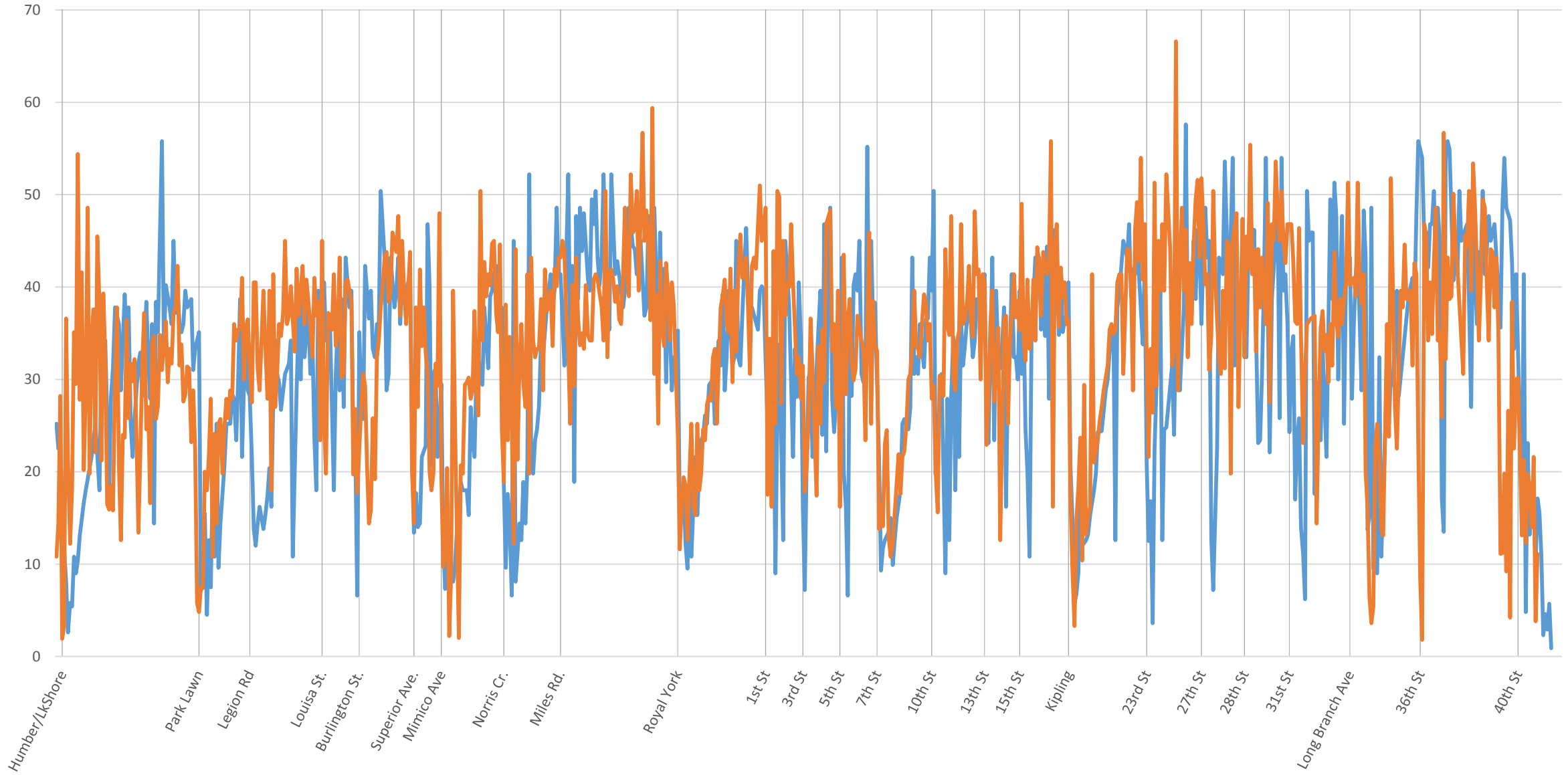
501 Queen Eastbound Streetcar (2016.11) vs Bus (2017.01) 2200 to 2300



501 Queen Eastbound Streetcar (2016.11) vs Bus (2017.01) 2300 to 2400



501 Queen Eastbound Streetcar (2016.11) vs Bus (2017.01) 2400 to 2500



Locations Streetcar Bus