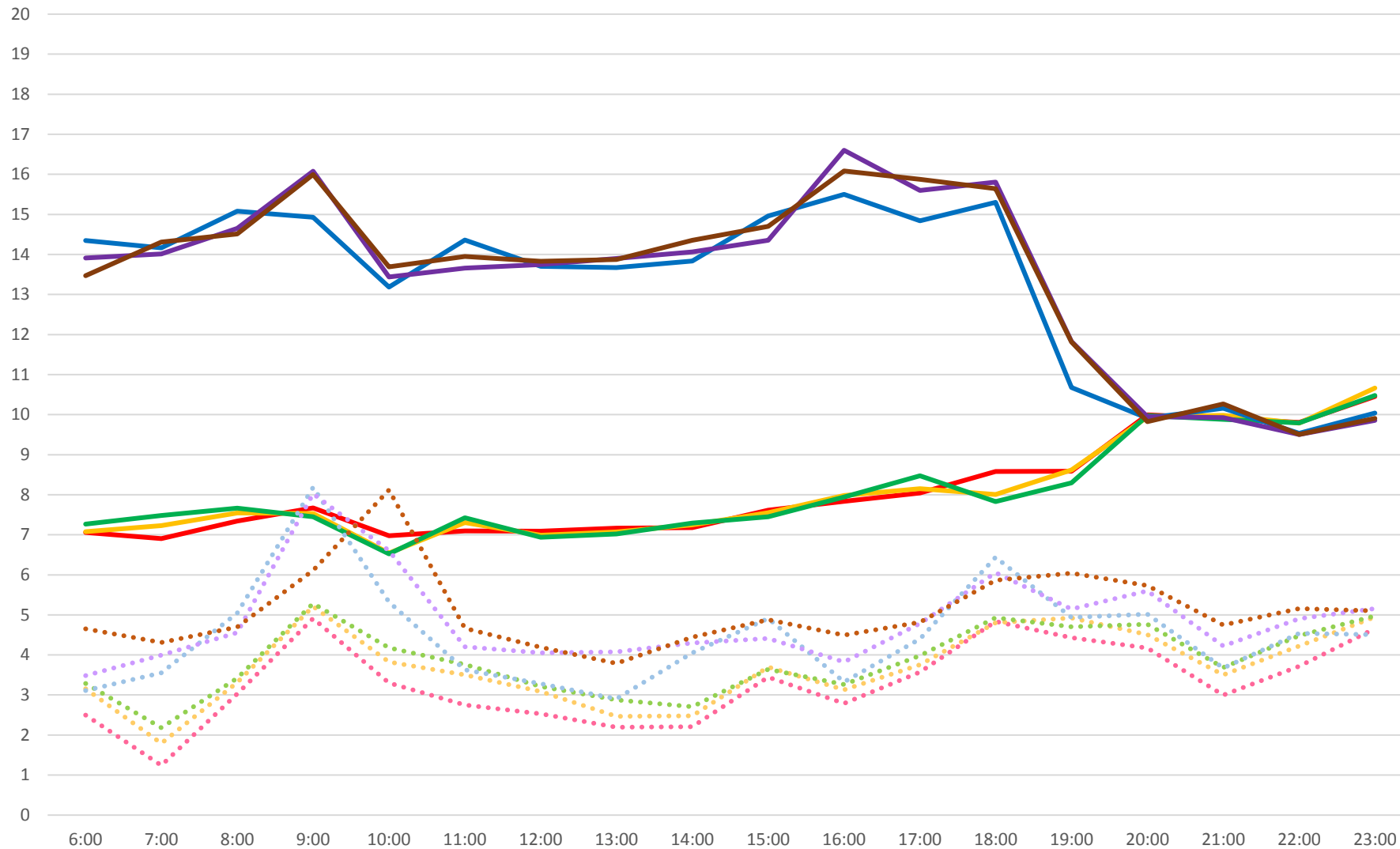
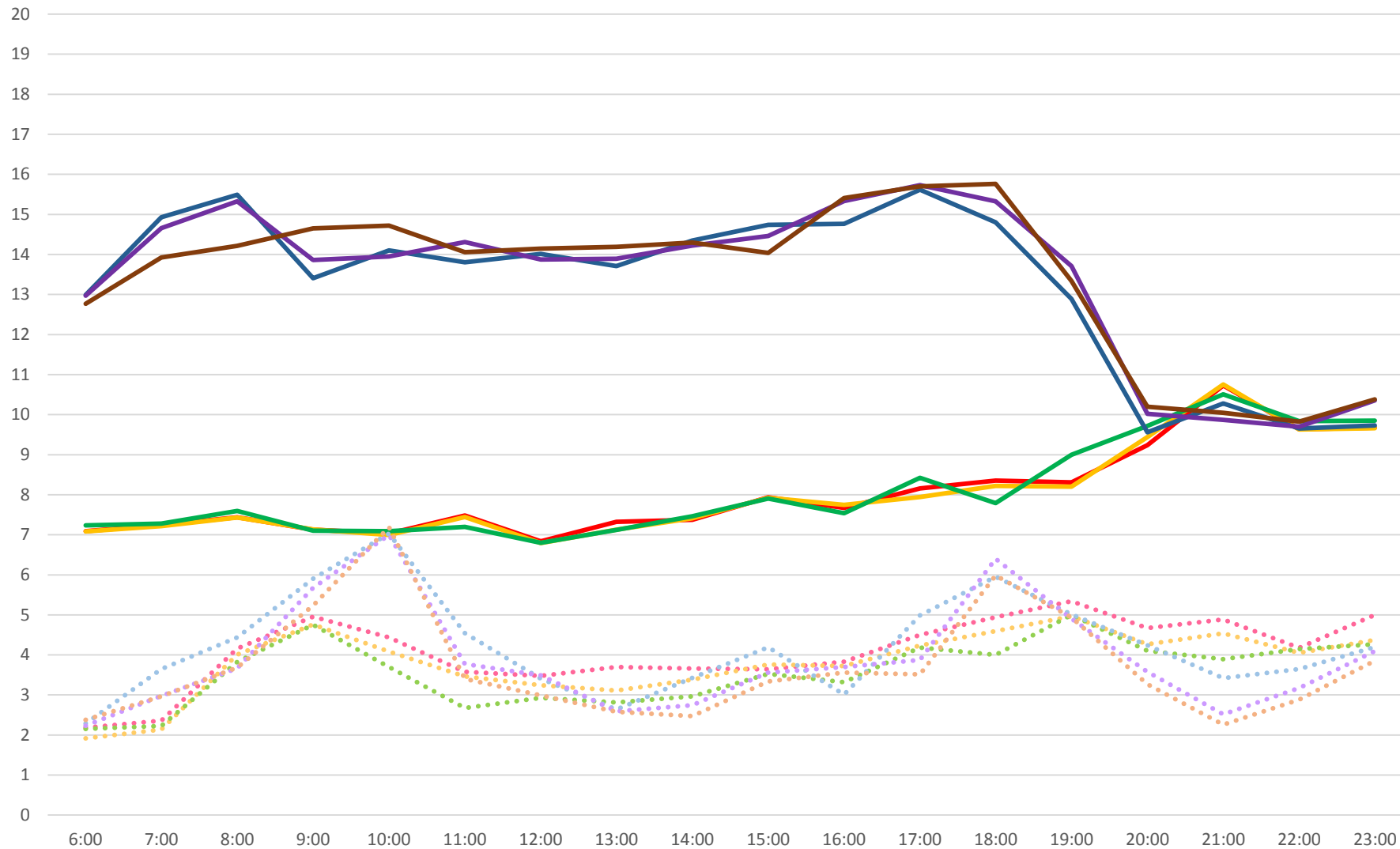


94 Wellesley Weekday Average Headways Westbound January 2016



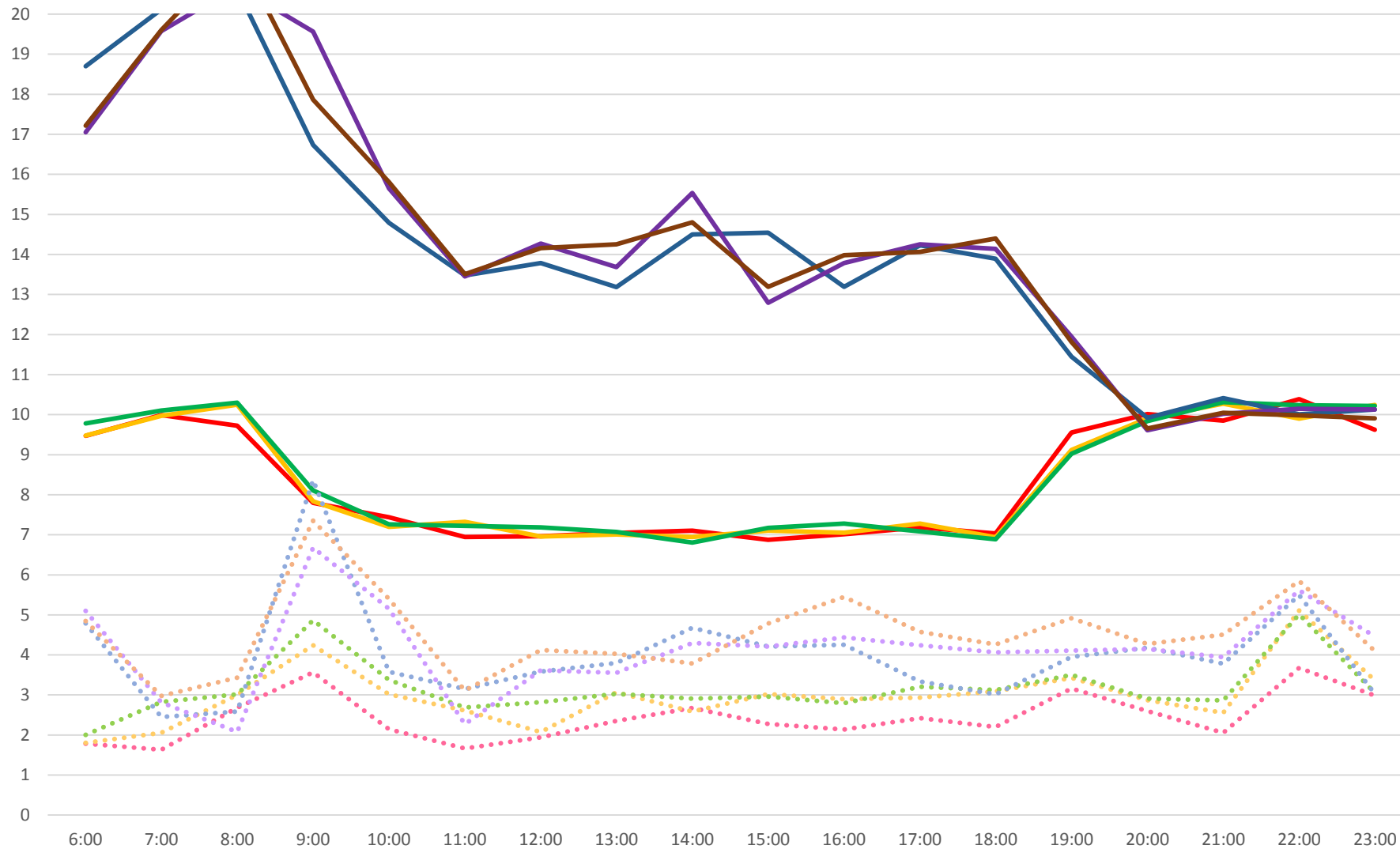
- W of Castle Frank Stn Avg
 · · · W of Castle Frank Stn SD
 — Sherbourne St Avg
 · · · Sherbourne St SD
- E of Wellesley Stn Avg
 · · · E of Wellesley Stn SD
 — Bay St Avg
 · · · Bay St SD
- Bathurst St Avg
 · · · Bathurst St SD
 — S of Bloor Avg
 · · · S of Bloor SD

94 Wellesley Weekday Average Headways Eastbound January 2016



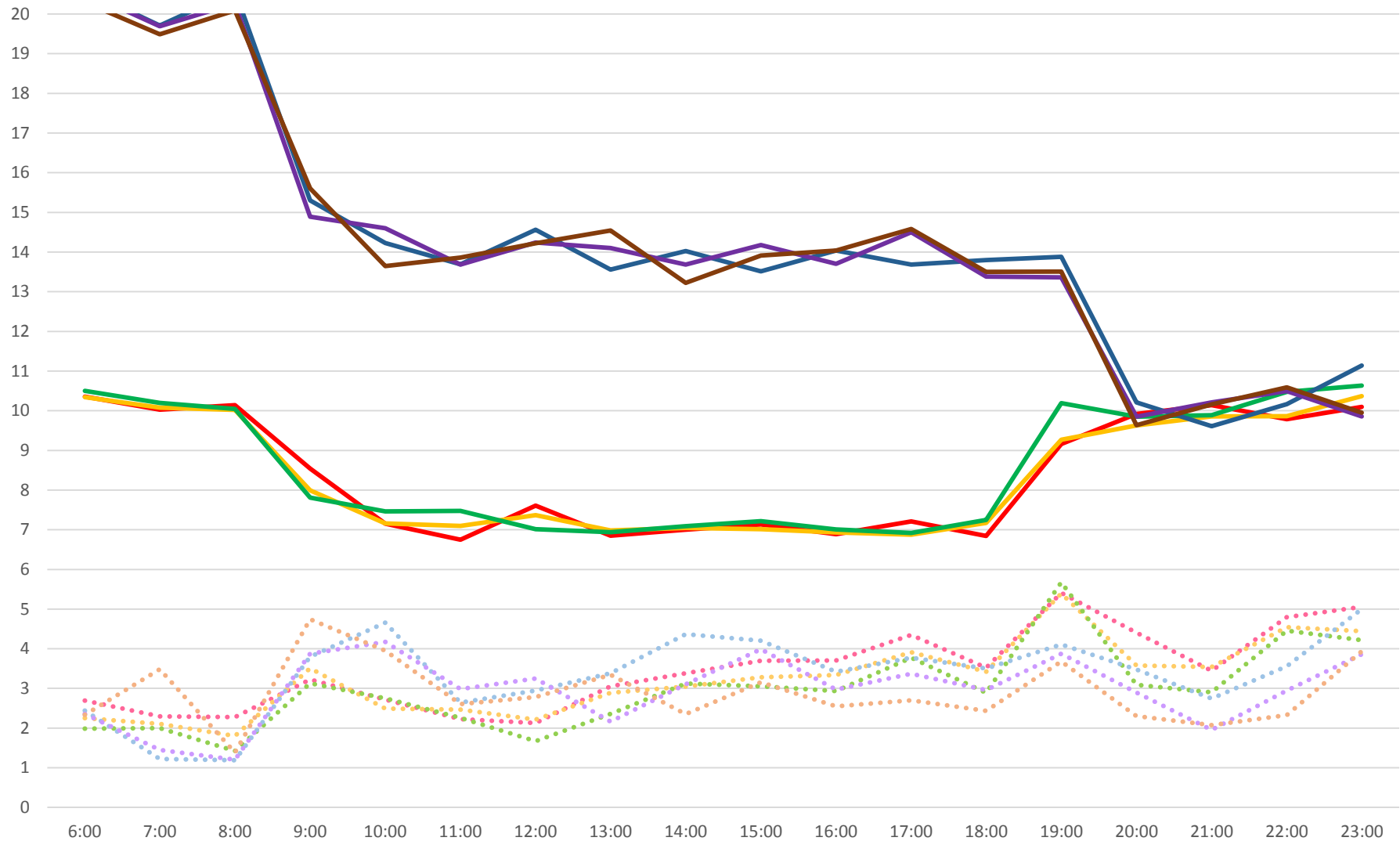
— W of Castle Frank Stn Avg
 ····· W of Castle Frank Stn SD
 — Sherbourne St Avg
 ····· Sherbourne St SD
 — E of Wellesley Stn Avg
 ····· E of Wellesley Stn SD
 — Bay St Avg
 ····· Bay St SD
 — Bathurst St Avg
 ····· Bathurst St SD
 — S of Bloor Avg
 ····· S of Bloor SD

94 Wellesley Saturday Average Headways Westbound January 2016



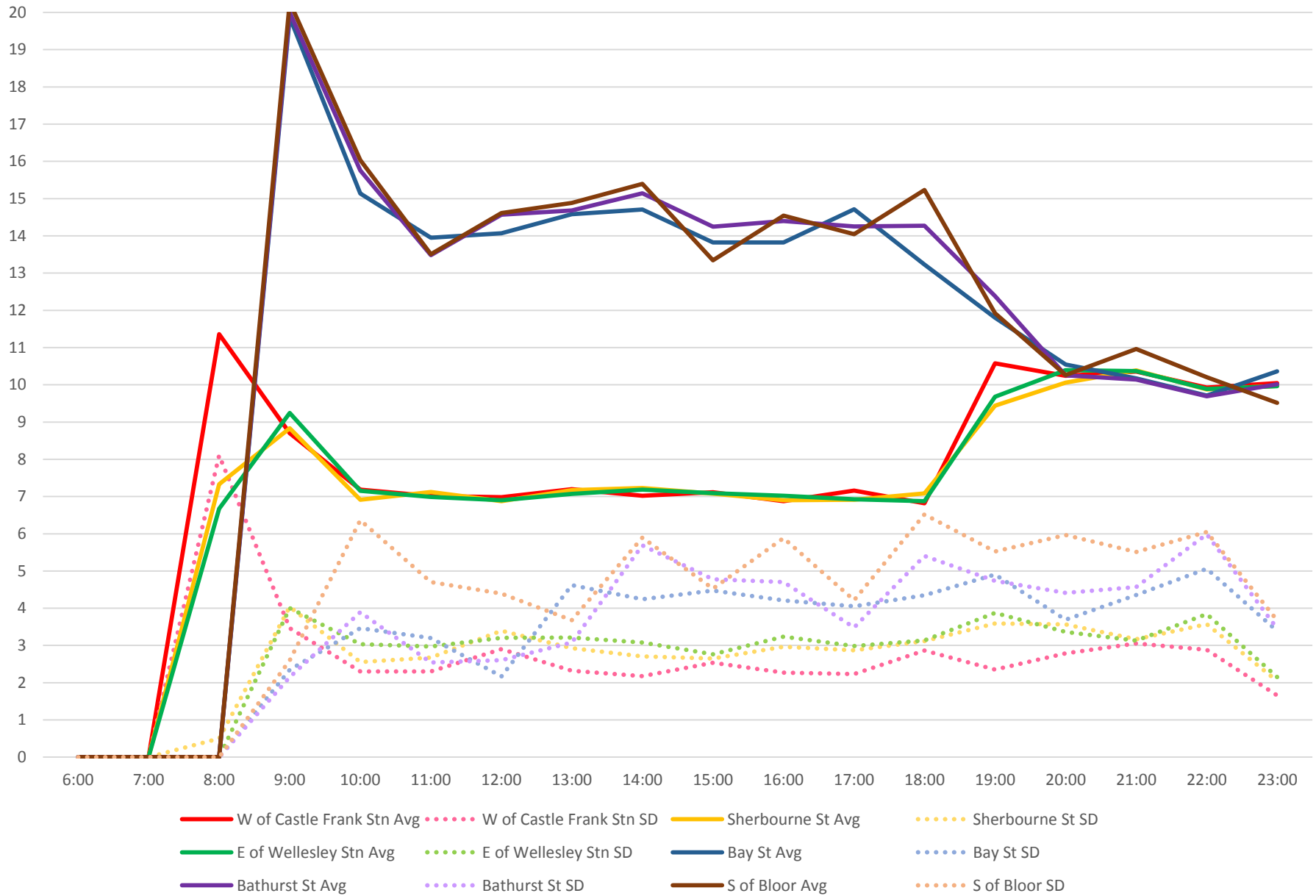
— W of Castle Frank Stn Avg
 ····· W of Castle Frank Stn SD
 — Sherbourne St Avg
 ····· Sherbourne St SD
— E of Wellesley Stn Avg
 ····· E of Wellesley Stn SD
— Bay St Avg
····· Bay St SD
— Bathurst St Avg
····· Bathurst St SD
— S of Bloor Avg
····· S of Bloor SD

94 Wellesley Saturday Average Headways Eastbound January 2016



- W of Castle Frank Stn Avg
 ····· W of Castle Frank Stn SD
 — Sherbourne St Avg
 ····· Sherbourne St SD
- E of Wellesley Stn Avg
 ····· E of Wellesley Stn SD
 — Bay St Avg
 ····· Bay St SD
- Bathurst St Avg
 ····· Bathurst St SD
 — S of Bloor Avg
 ····· S of Bloor SD

94 Wellesley Sunday Average Headways Westbound January 2016



94 Wellesley Sunday Average Headways Eastbound January 2016

