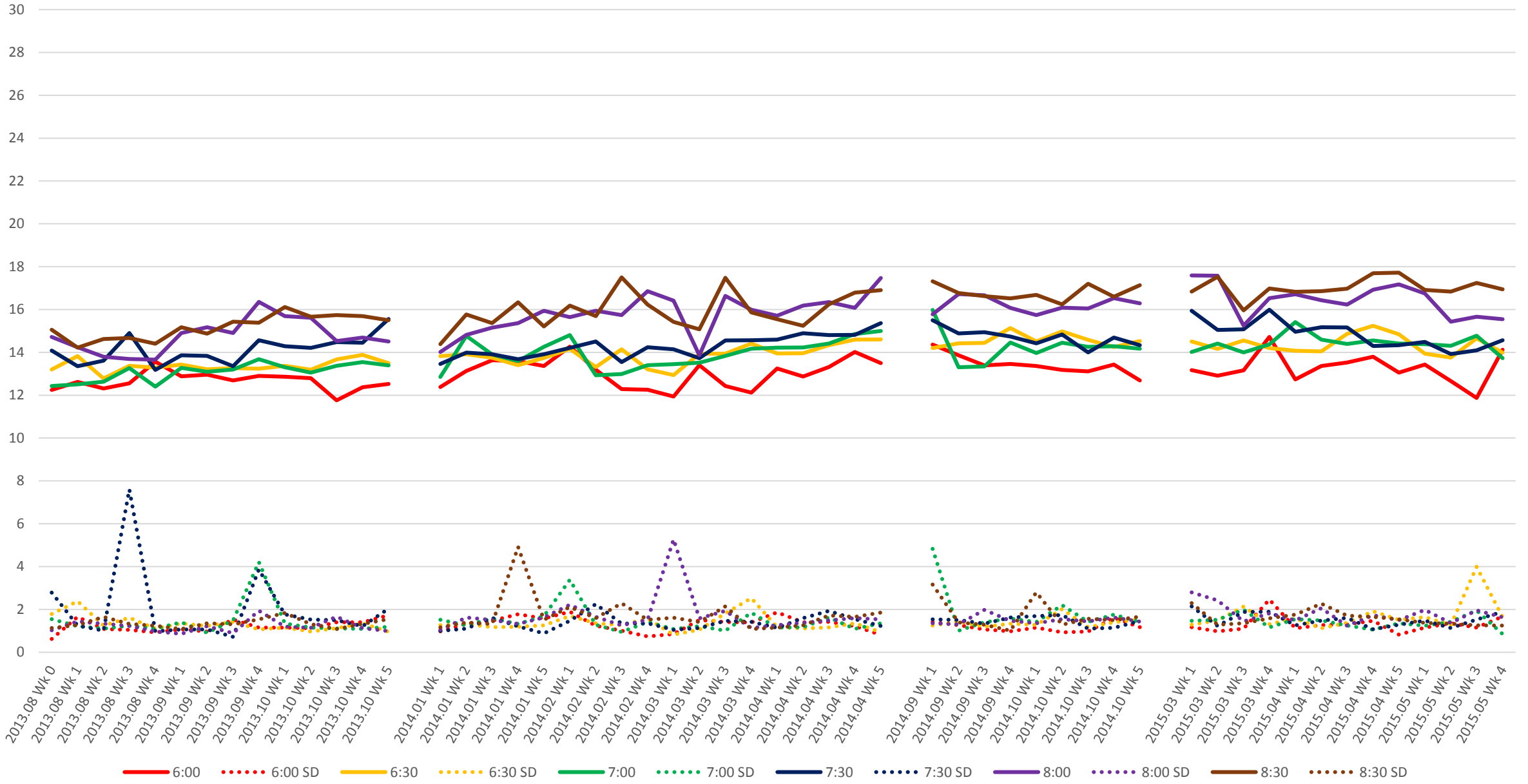
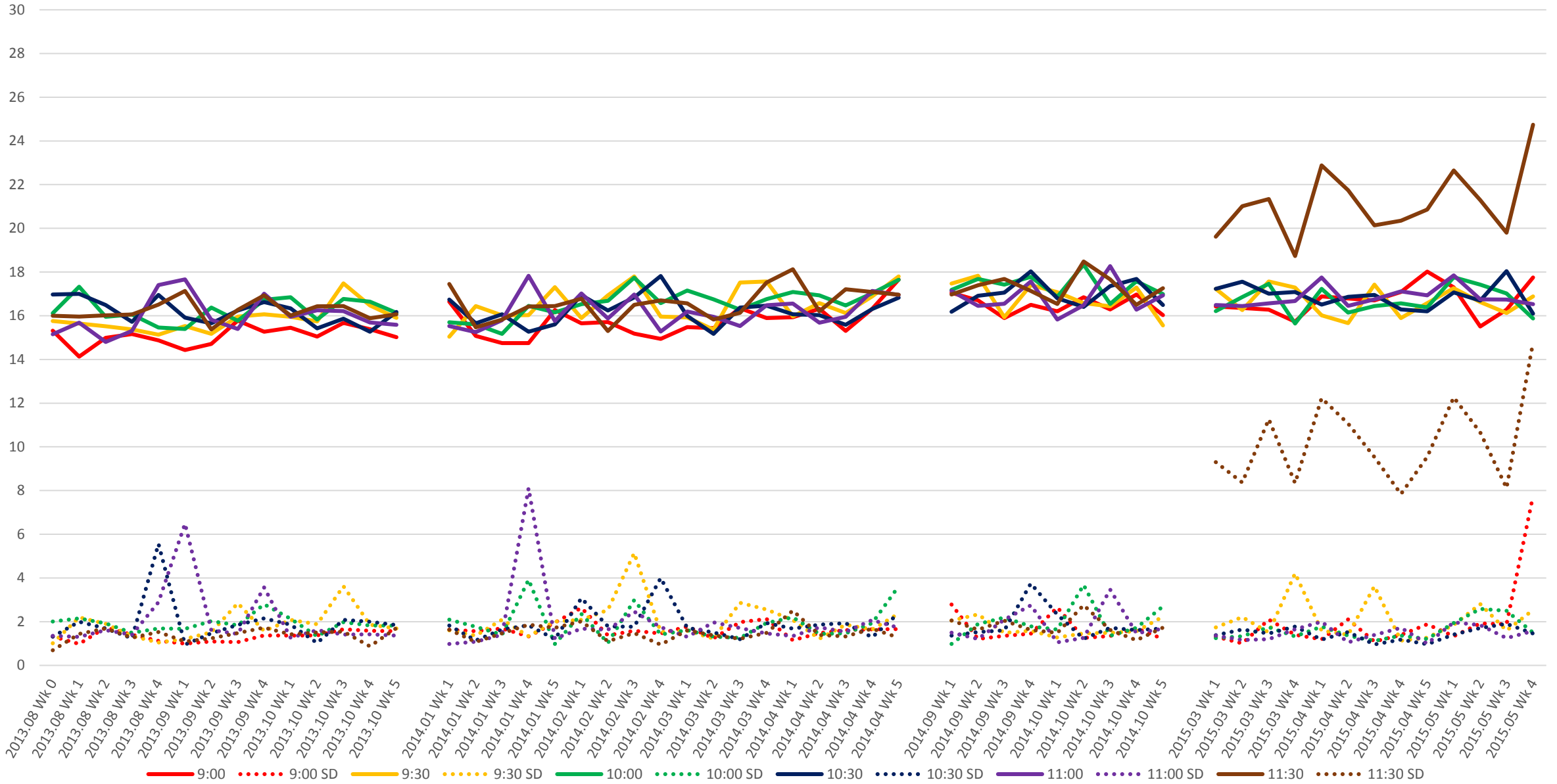


501 Queen Link Times From Parliament St. To East of Coxwell Ave. Eastbound Early Morning

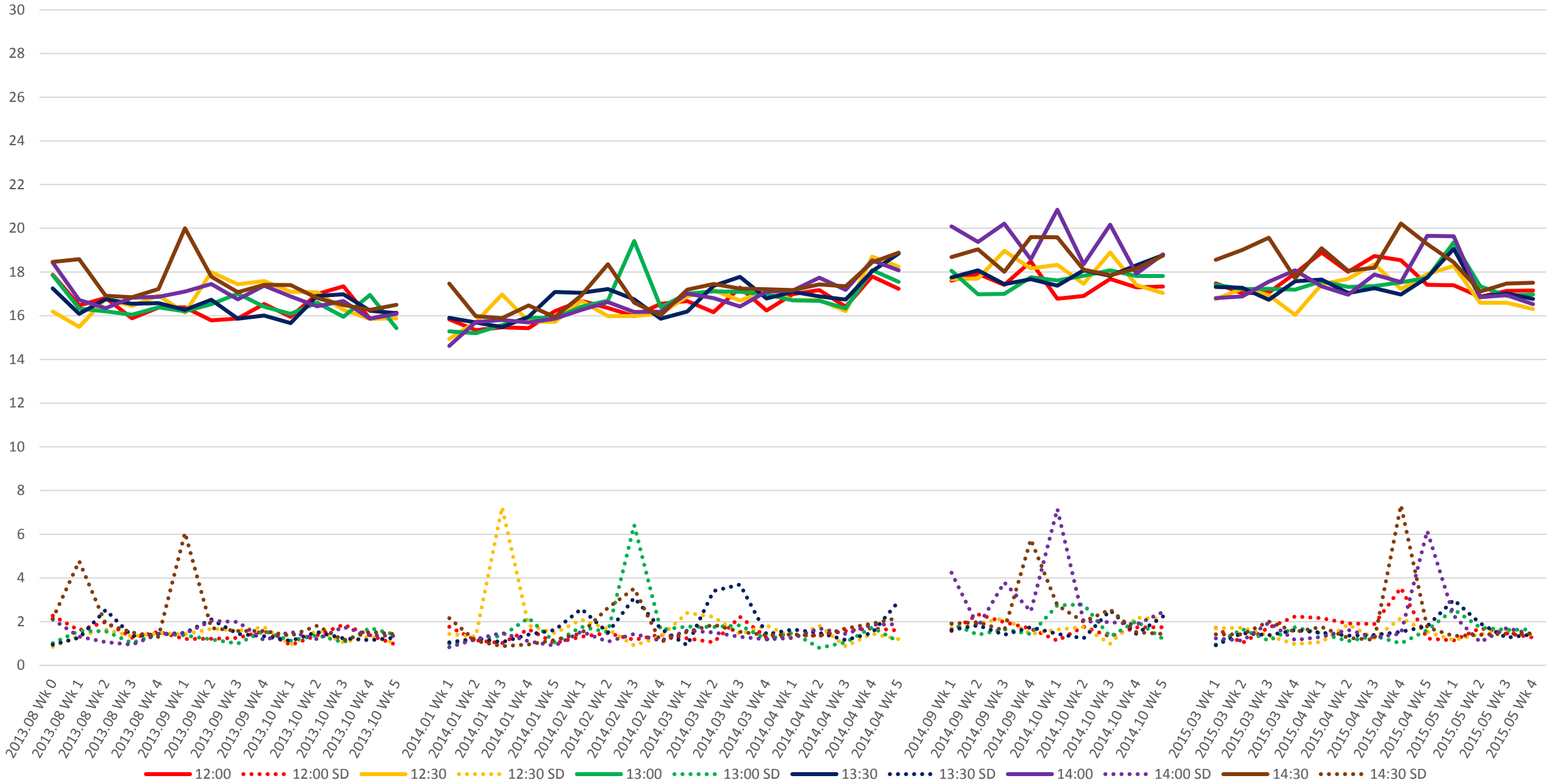


— 6:00   
 ⋯ 6:00 SD   
 — 6:30   
 ⋯ 6:30 SD   
 — 7:00   
 ⋯ 7:00 SD   
 — 7:30   
 ⋯ 7:30 SD   
 — 8:00   
 ⋯ 8:00 SD   
 — 8:30   
 ⋯ 8:30 SD

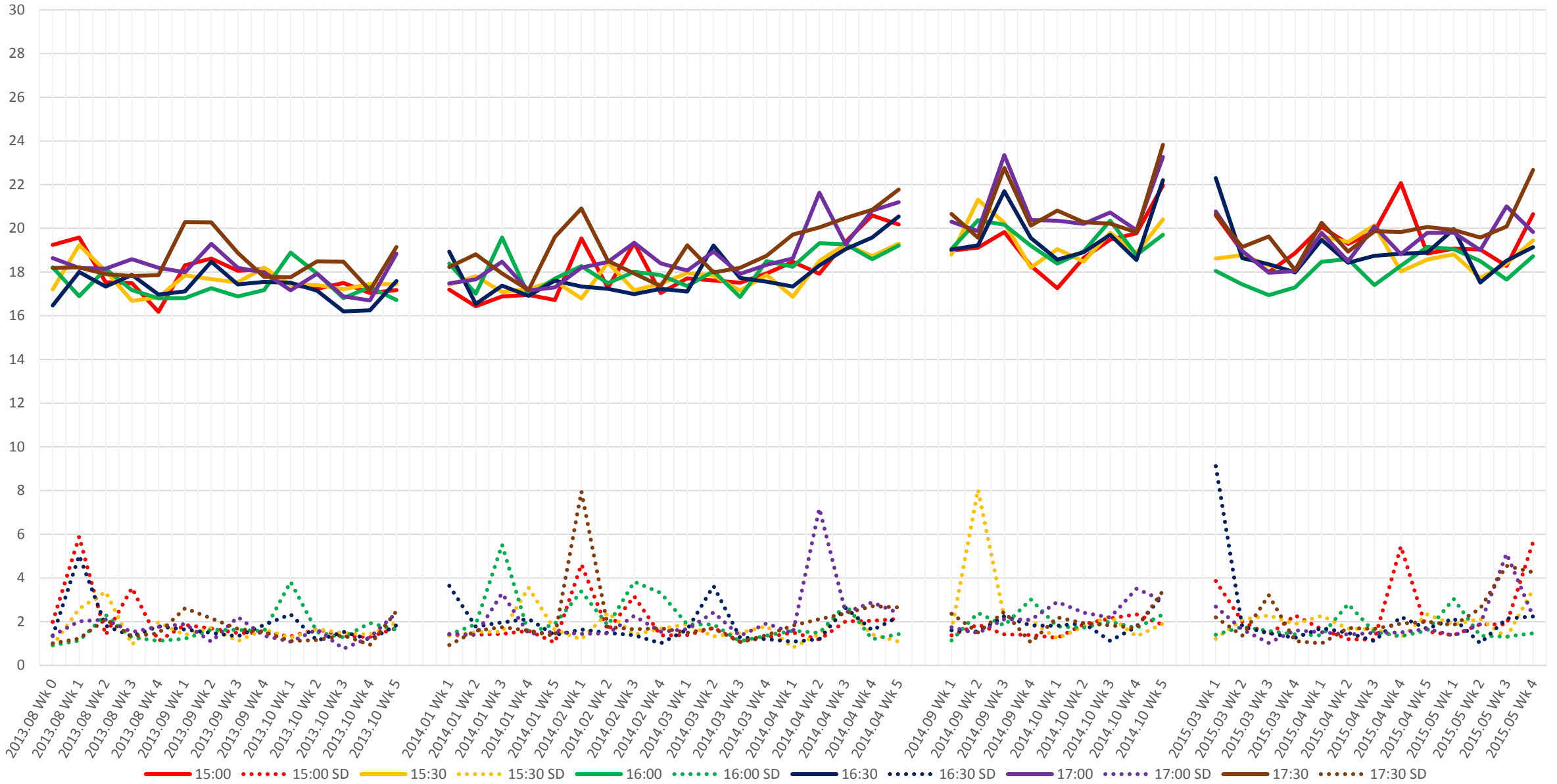
501 Queen Link Times From Parliament St. To East of Coxwell Ave. Eastbound Late Morning



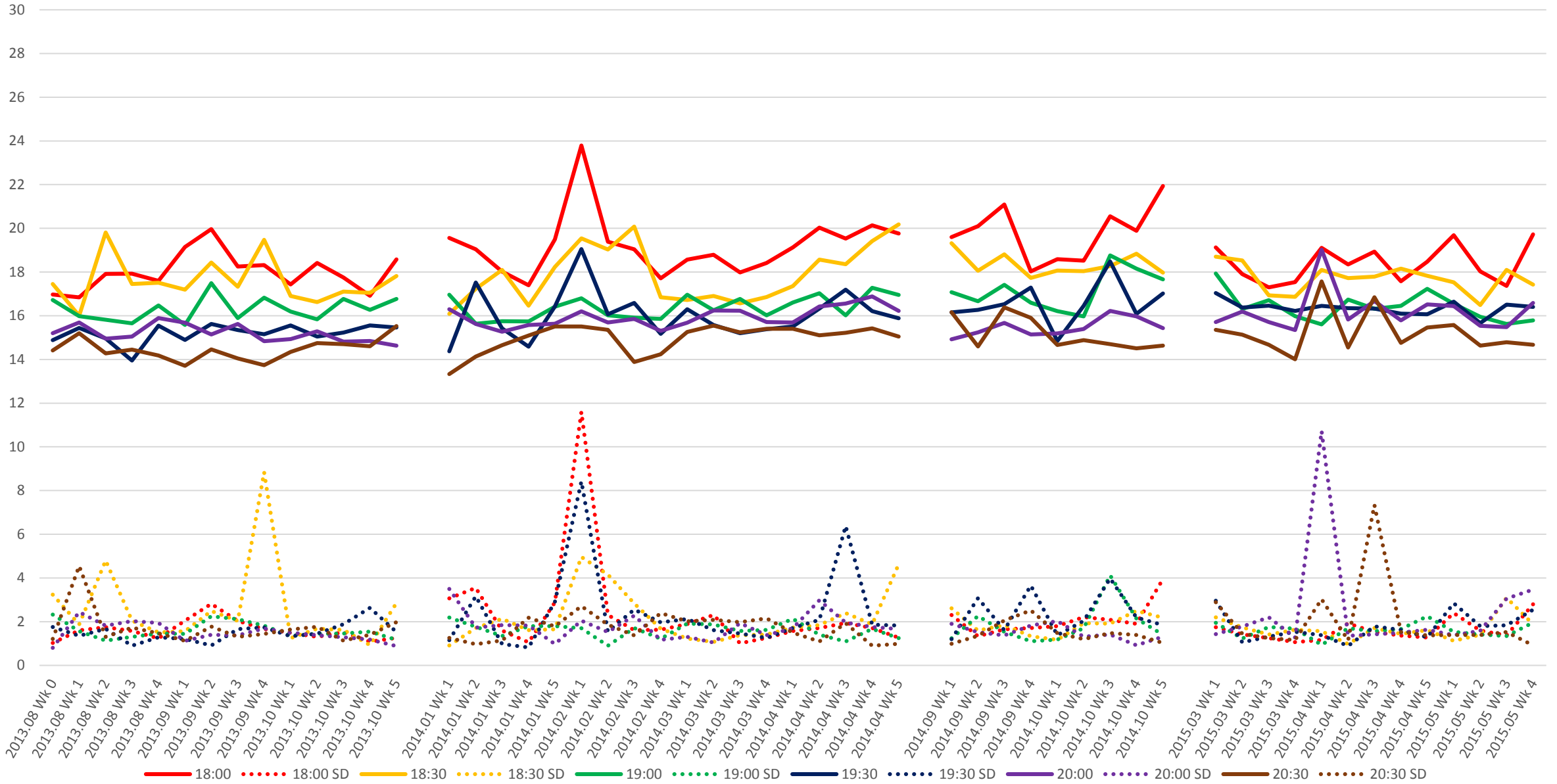
501 Queen Link Times From Parliament St. To East of Coxwell Ave. Eastbound Early Afternoon



501 Queen Link Times From Parliament St. To East of Coxwell Ave. Eastbound Late Afternoon



501 Queen Link Times From Parliament St. To East of Coxwell Ave. Eastbound Early Evening



501 Queen Link Times From Parliament St. To East of Coxwell Ave. Eastbound Late Evening

