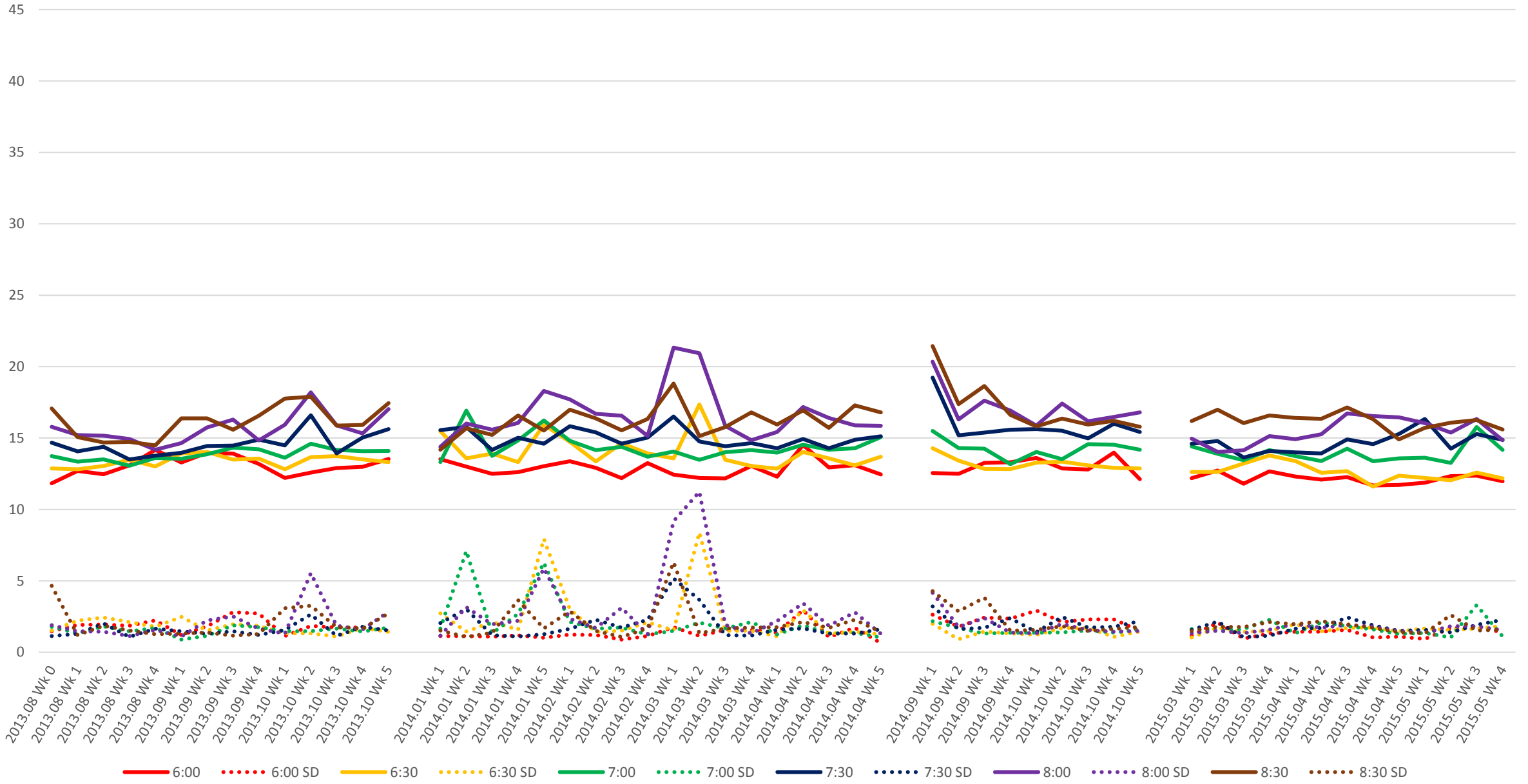
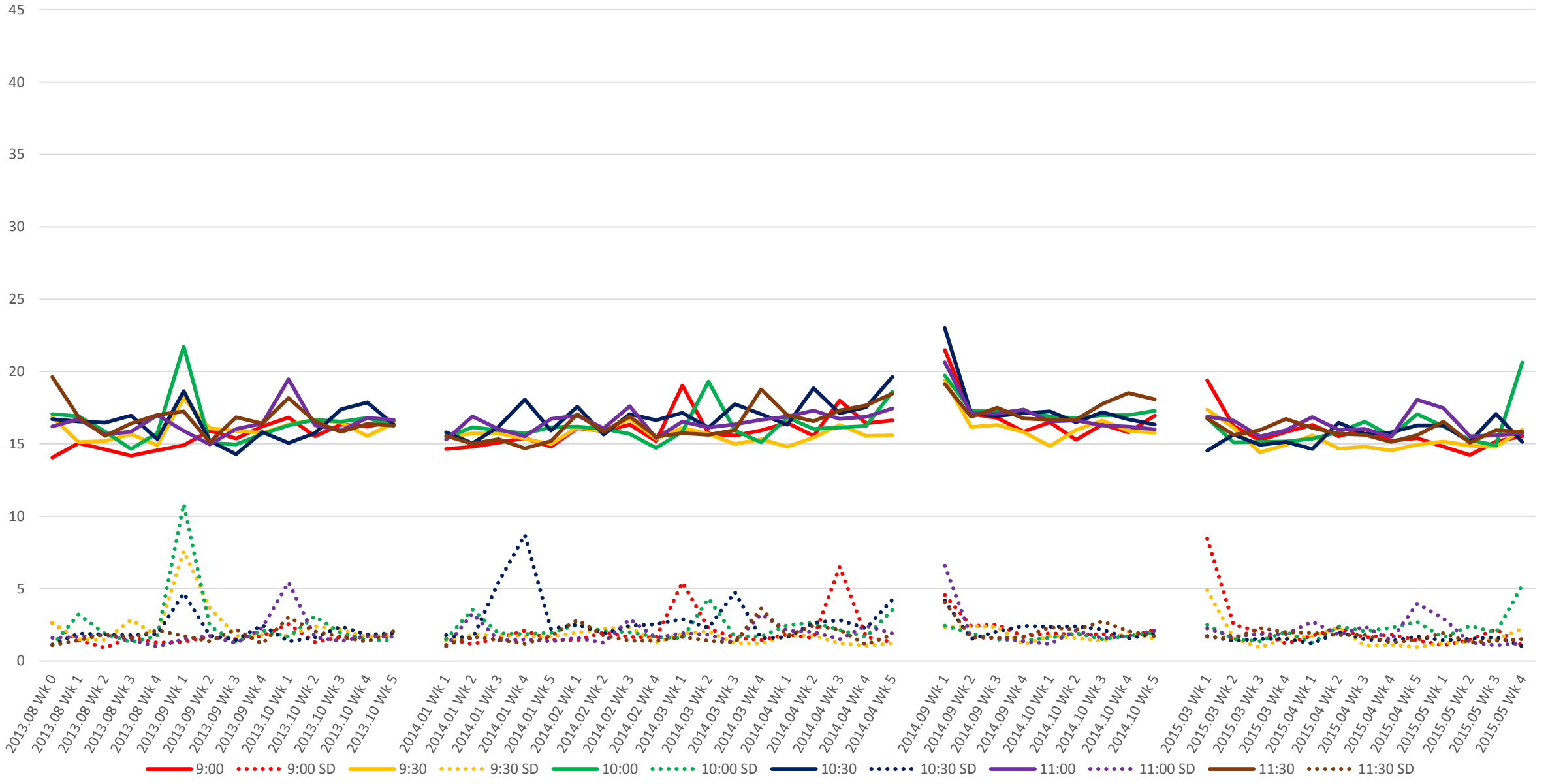


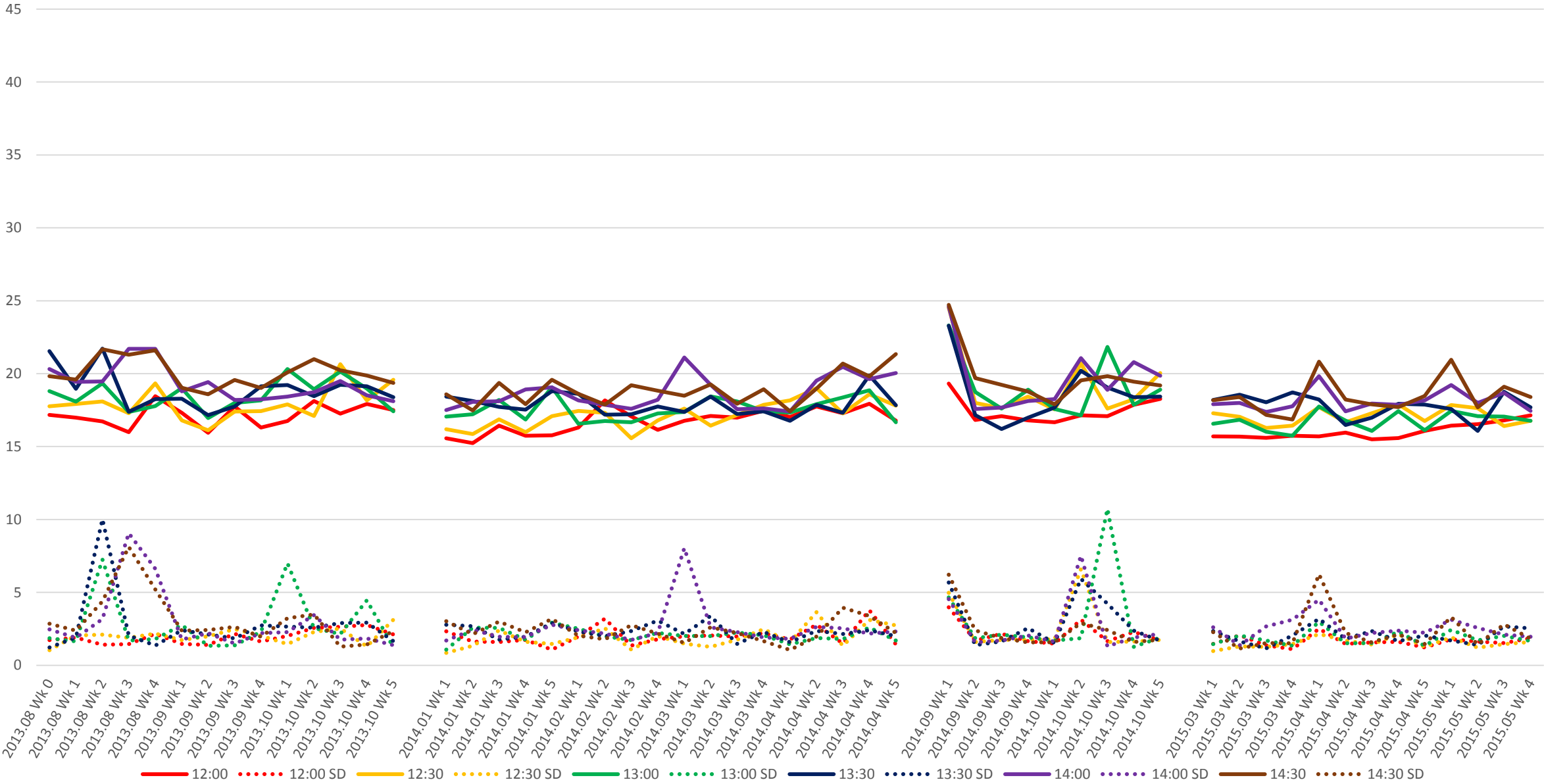
### 501 Queen Link Times From Bathurst St. To Roncesvalles Ave. Westbound Early Morning



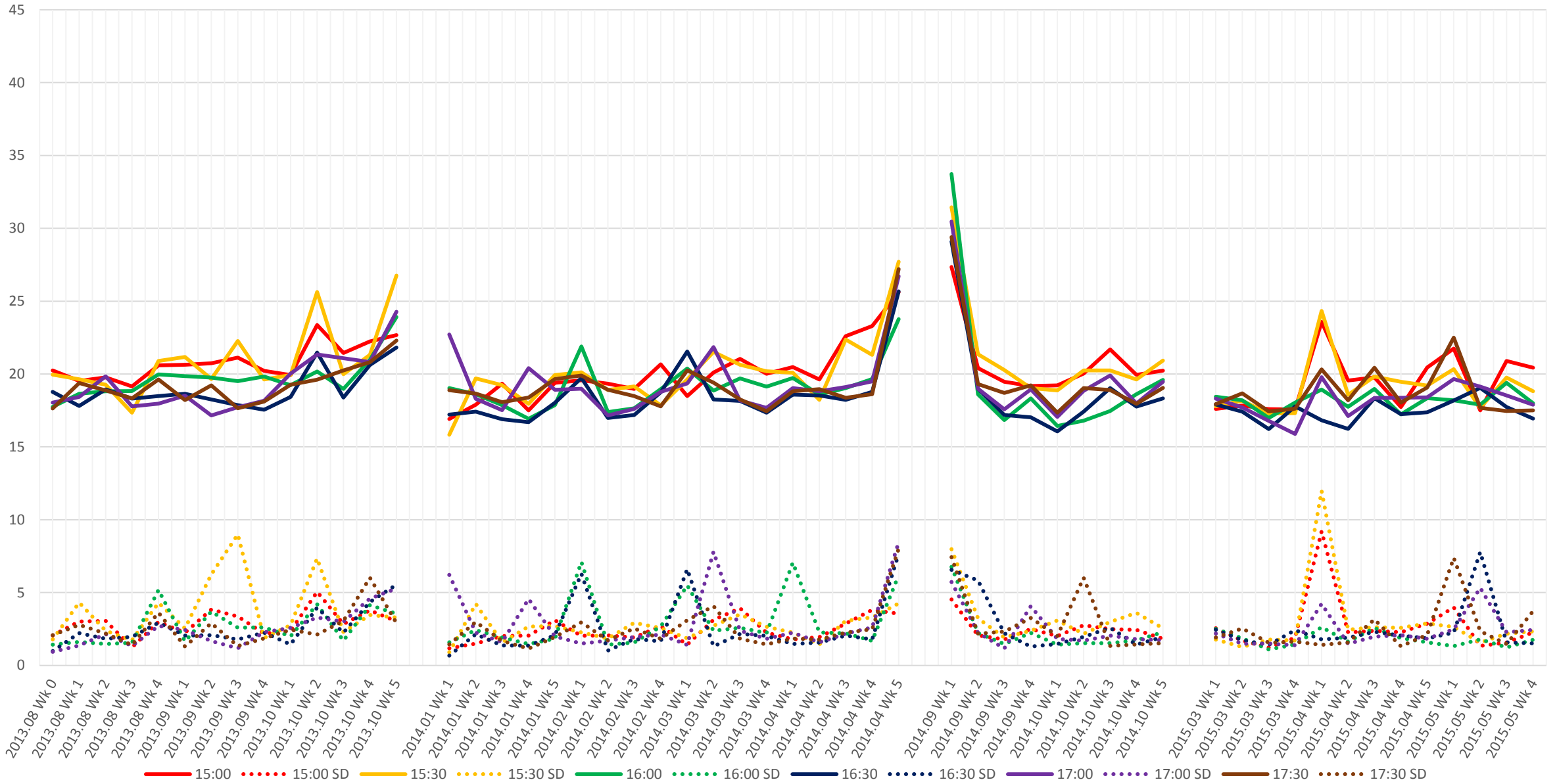
### 501 Queen Link Times From Bathurst St. To Roncesvalles Ave. Westbound Late Morning



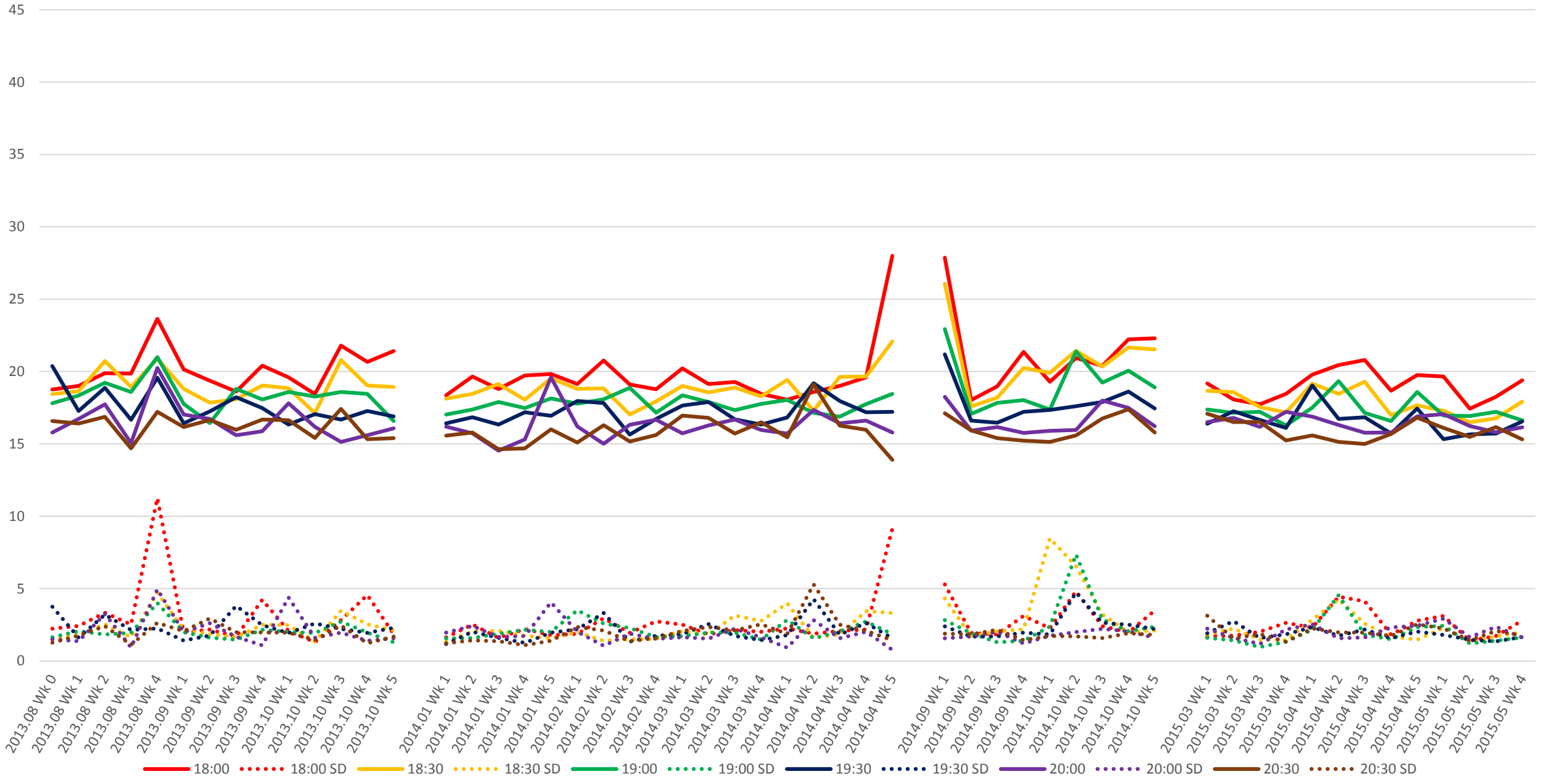
### 501 Queen Link Times From Bathurst St. To Roncesvalles Ave. Westbound Early Afternoon



501 Queen Link Times From Bathurst St. To Roncesvalles Ave. Westbound Late Afternoon



### 501 Queen Link Times From Bathurst St. To Roncesvalles Ave. Westbound Early Evening



### 501 Queen Link Times From Bathurst St. To Roncesvalles Ave. Westbound Late Evening

