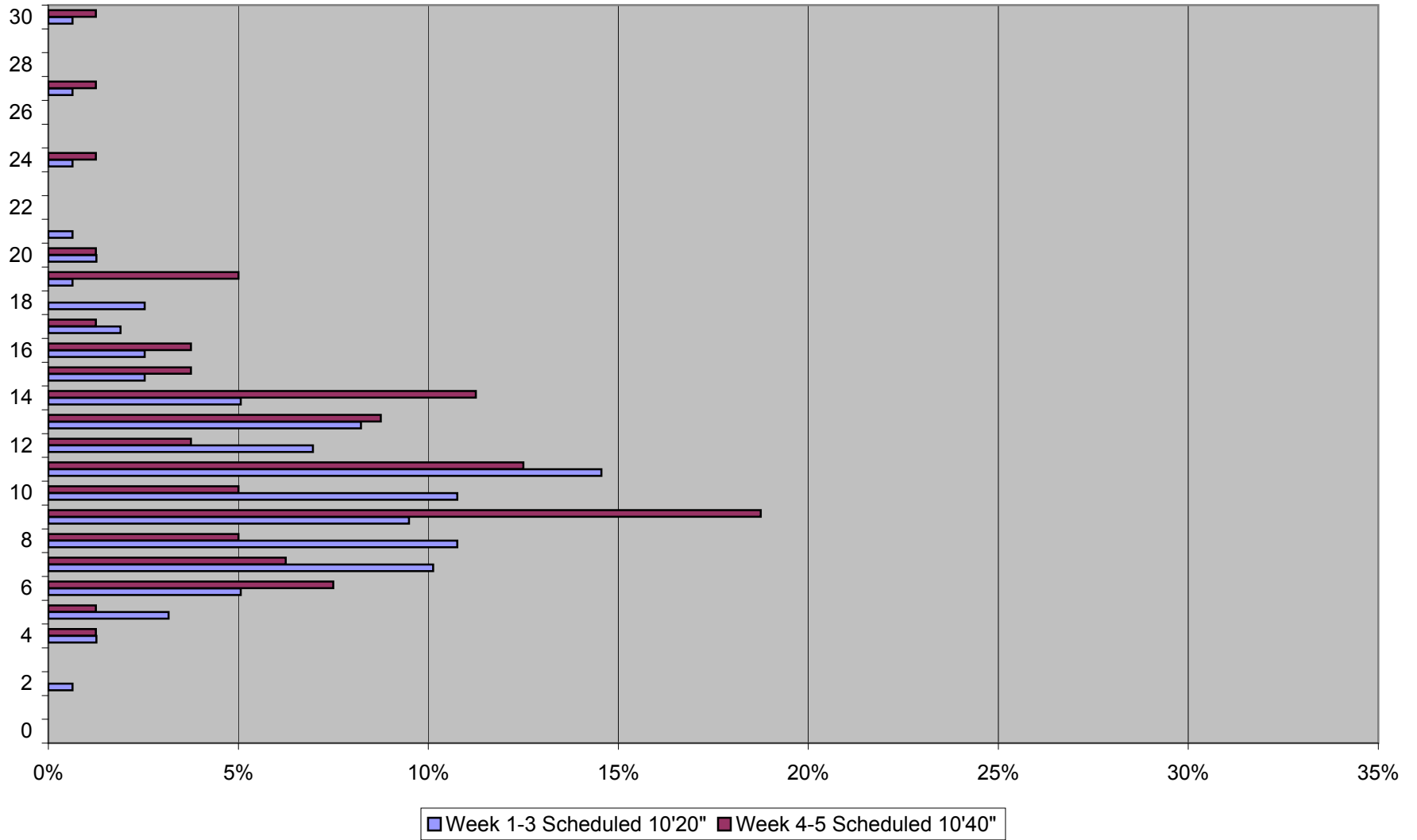
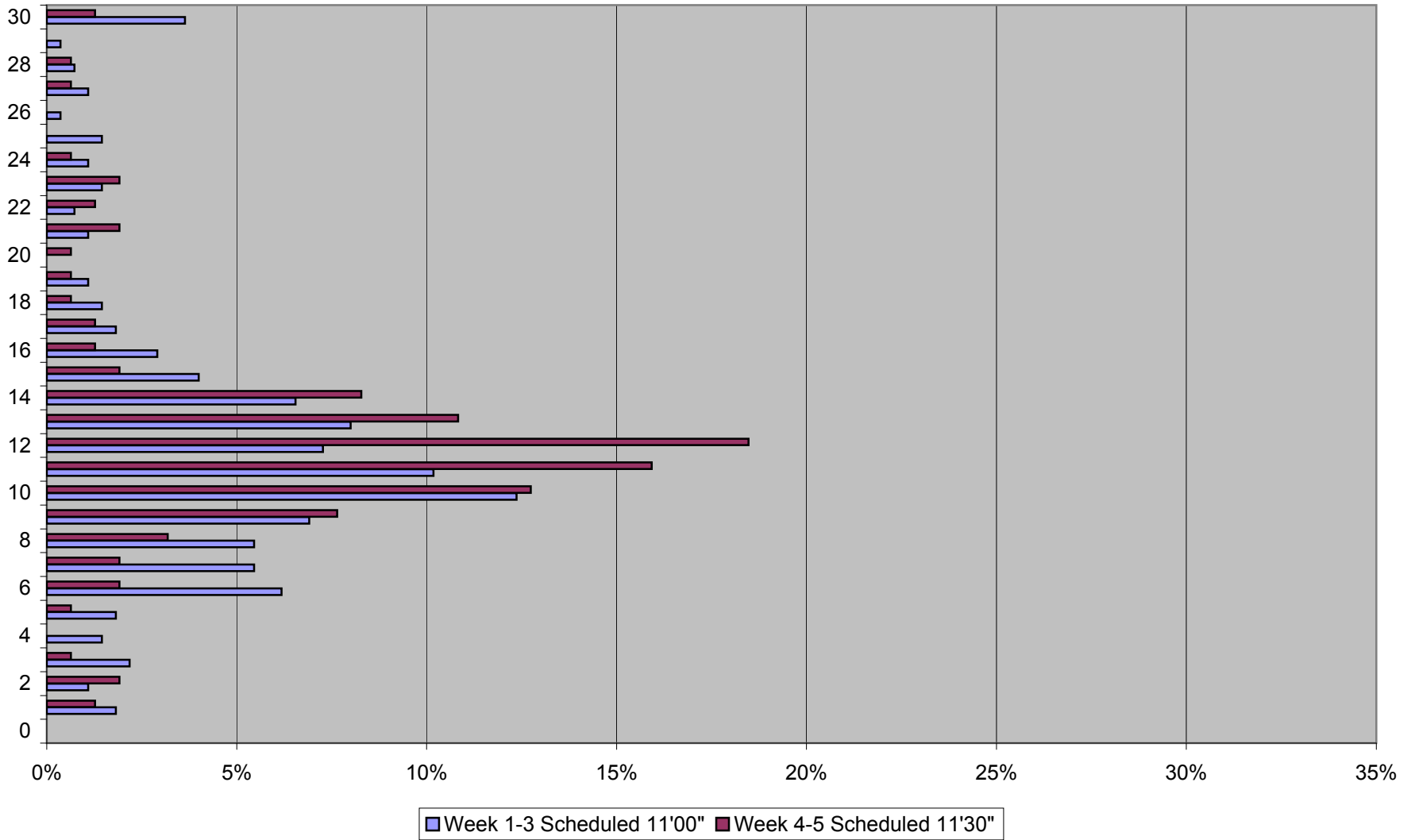


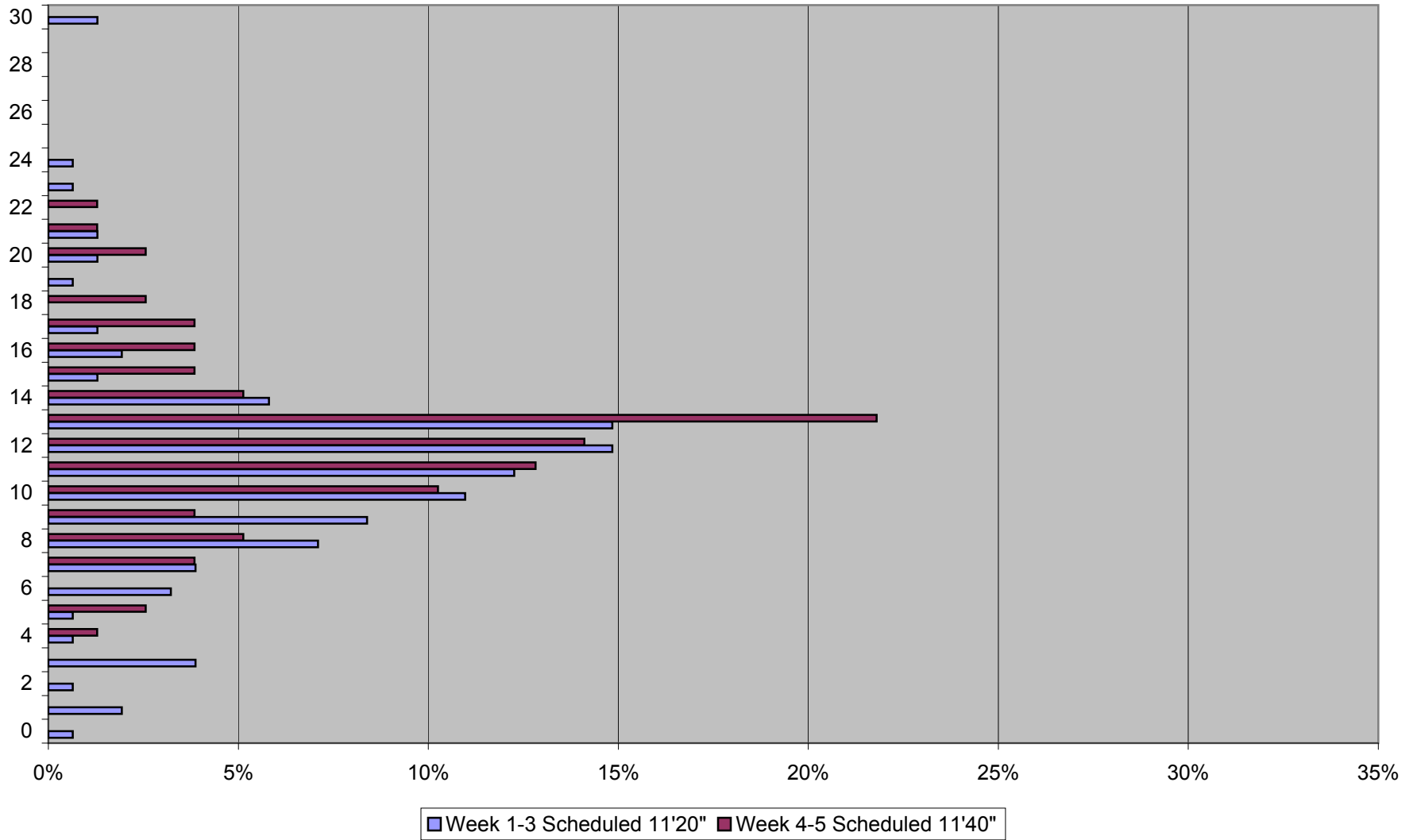
Headway Distribution Weekdays 0700 to 0900 Queen from Long Branch Loop Eastbound November 2011



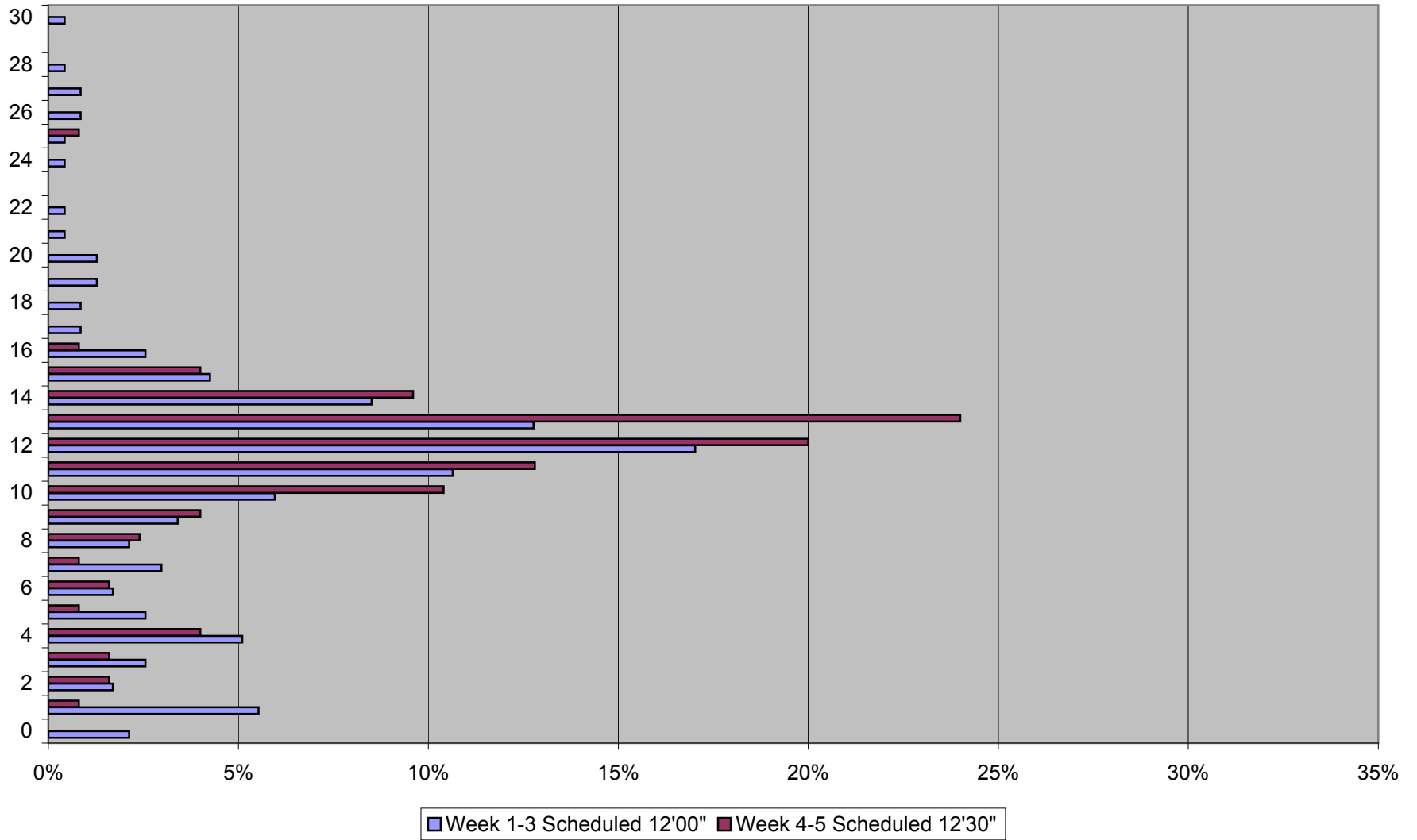
Headway Distribution Weekdays 1000 to 1400 Queen from Long Branch Loop Eastbound November 2011



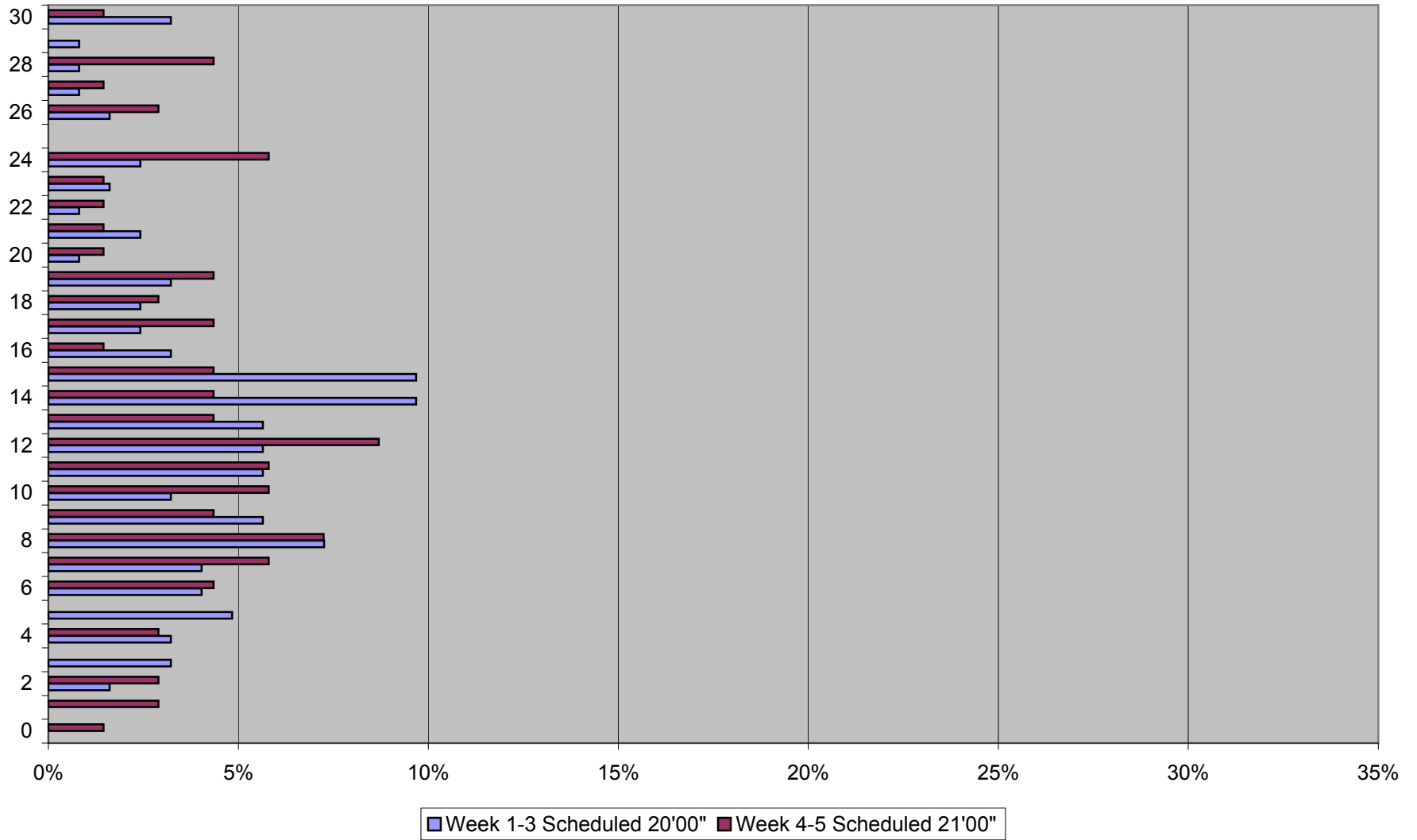
Headway Distribution Weekdays 1600 to 1800 Queen from Long Branch Loop Eastbound November 2011



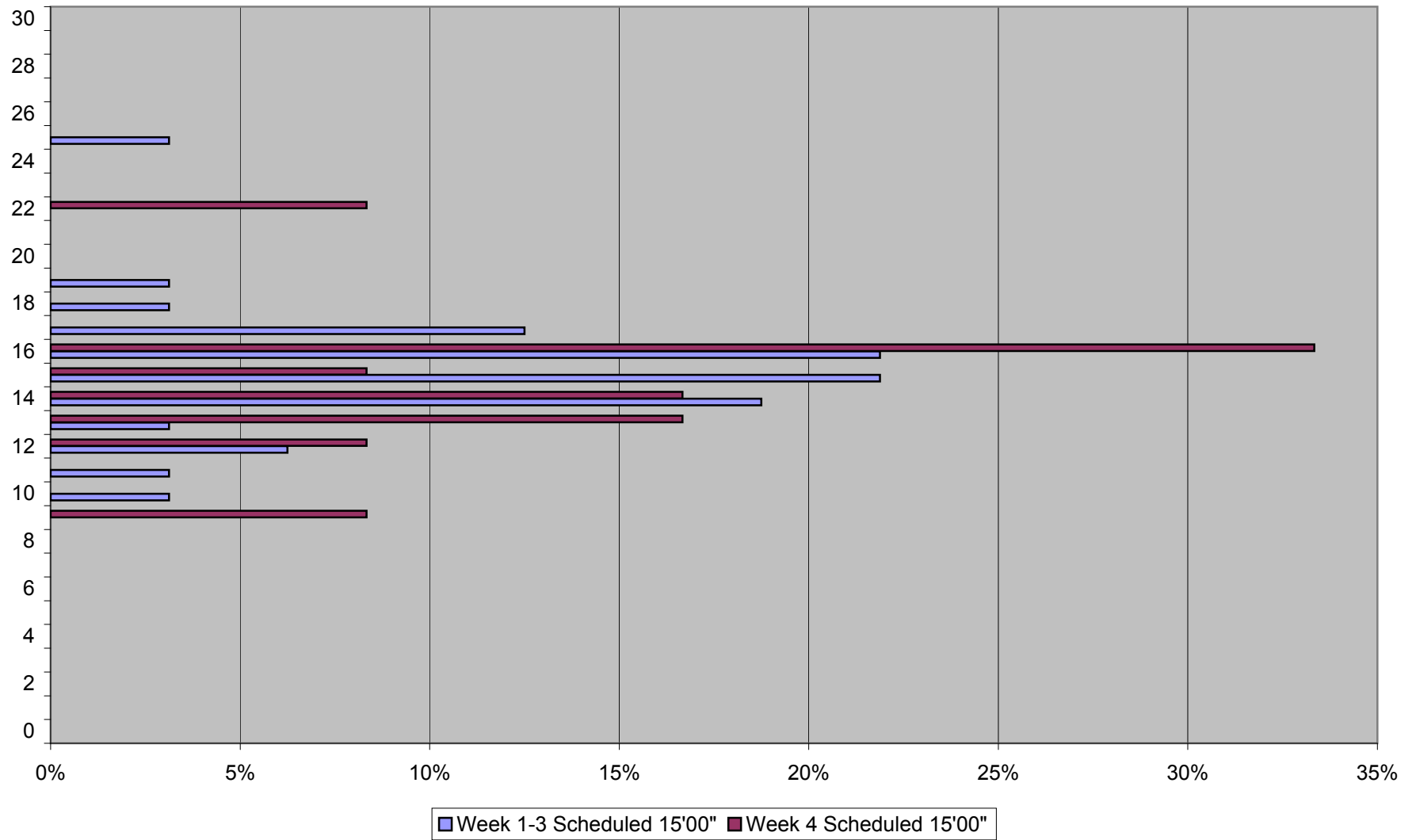
Headway Distribution Weekdays 1900 to 2200 Queen from Long Branch Loop Eastbound November 2011



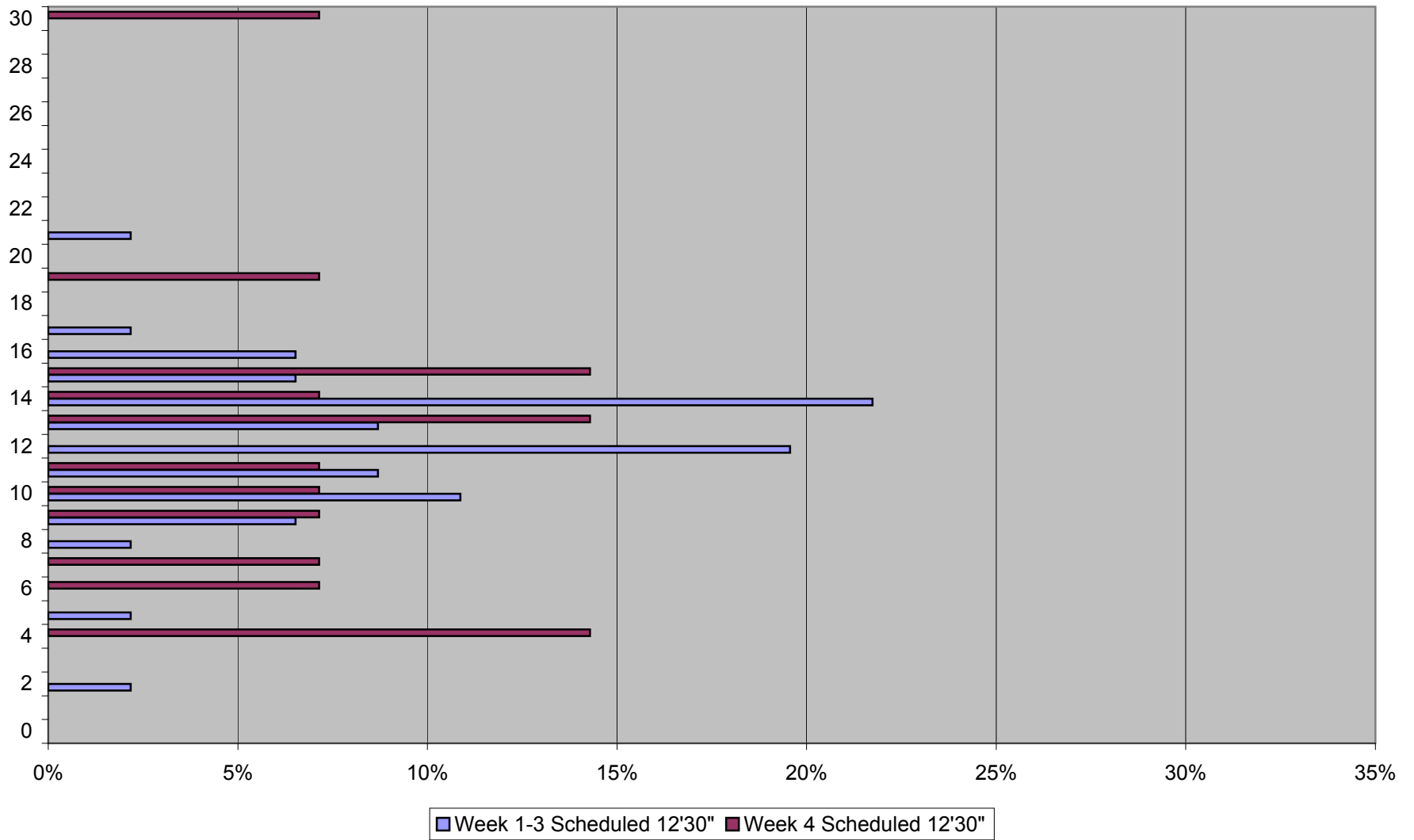
Headway Distribution Weekdays 2200 to 2400 Queen from Long Branch Loop Eastbound November 2011



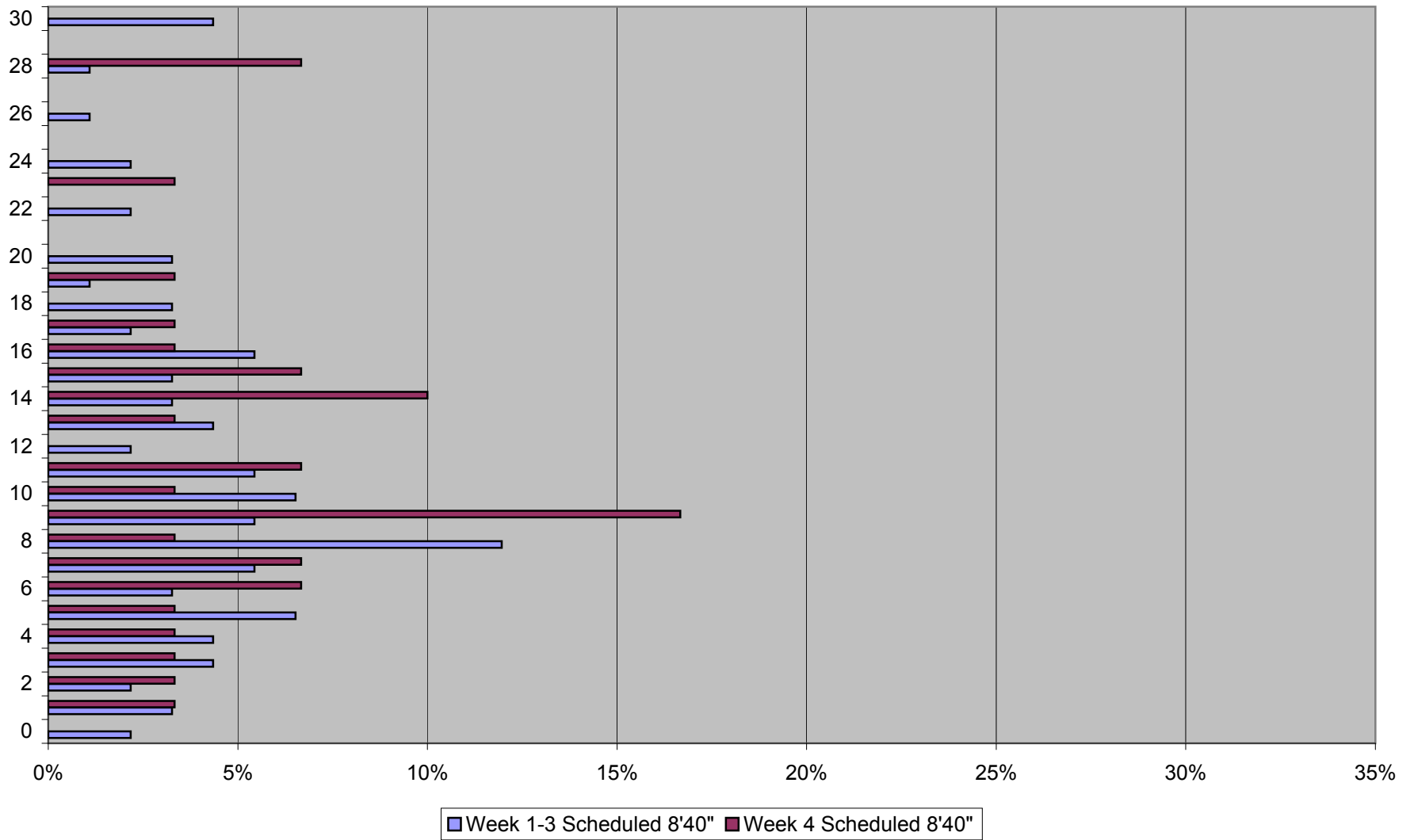
Headway Distribution Saturdays 0600 to 0900 Queen from Long Branch Loop Eastbound November 2011



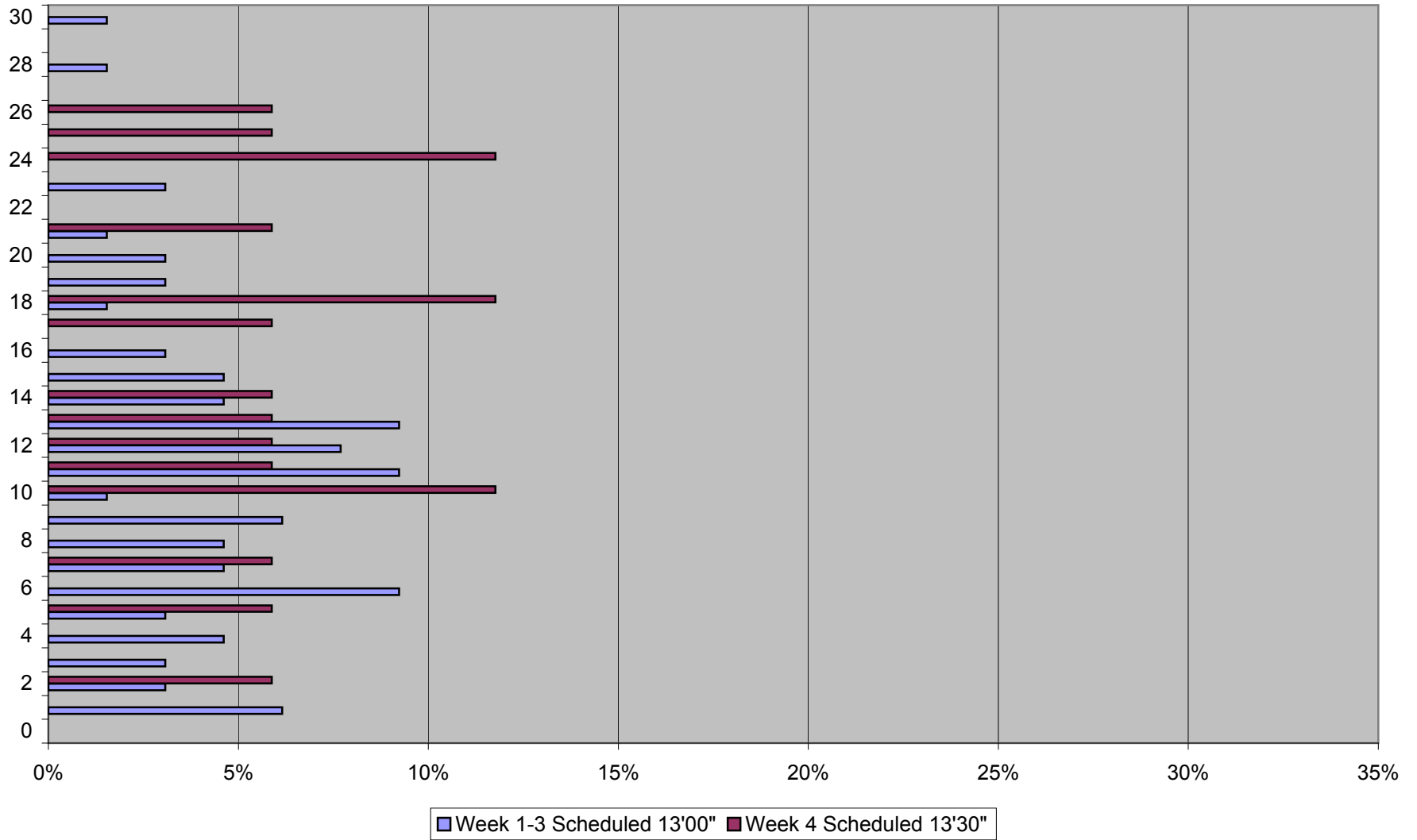
Headway Distribution Saturdays 0900 to 1200 Queen from Long Branch Loop Eastbound November 2011



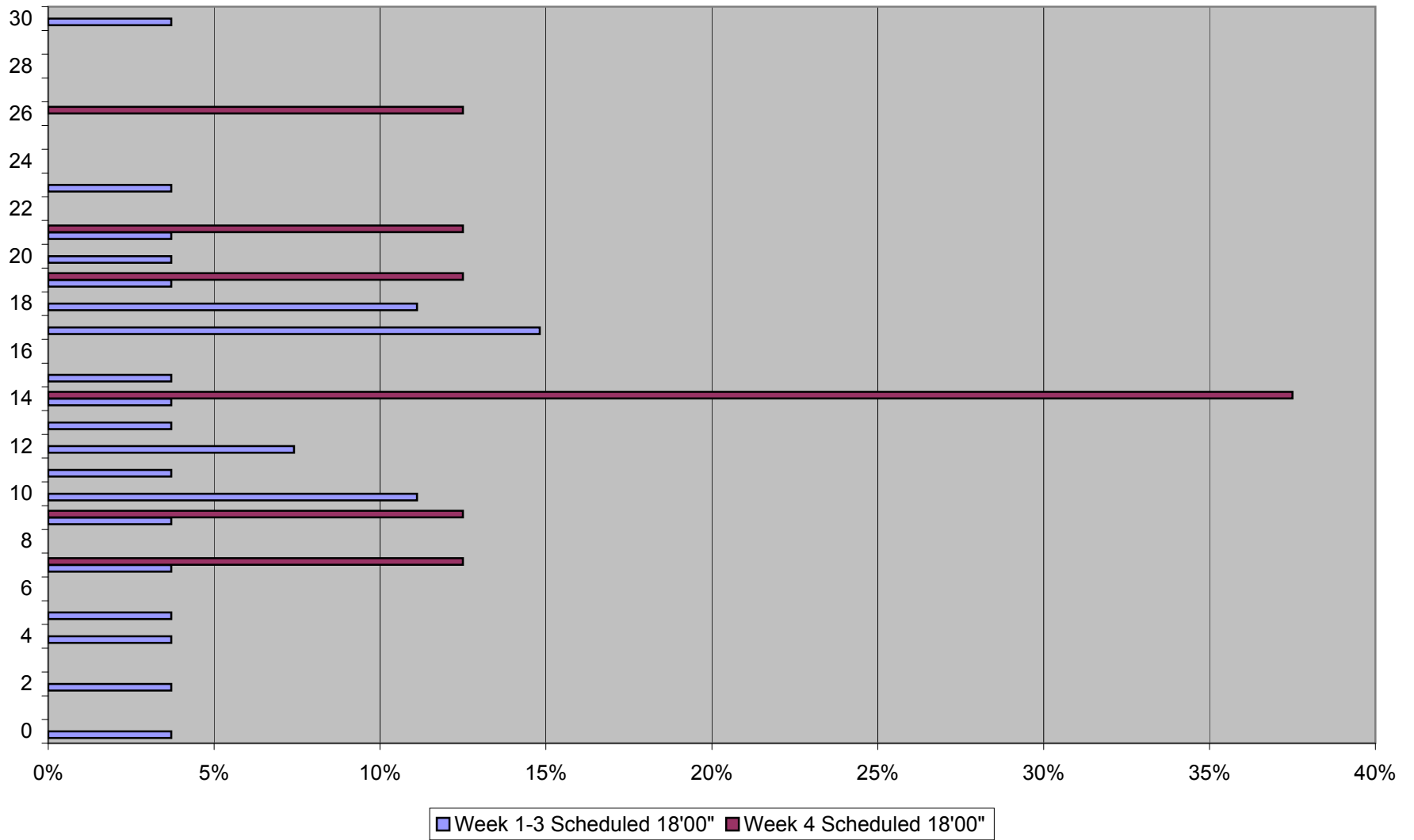
Headway Distribution Saturdays 1200 to 1800 Queen from Long Branch Loop Eastbound November 2011



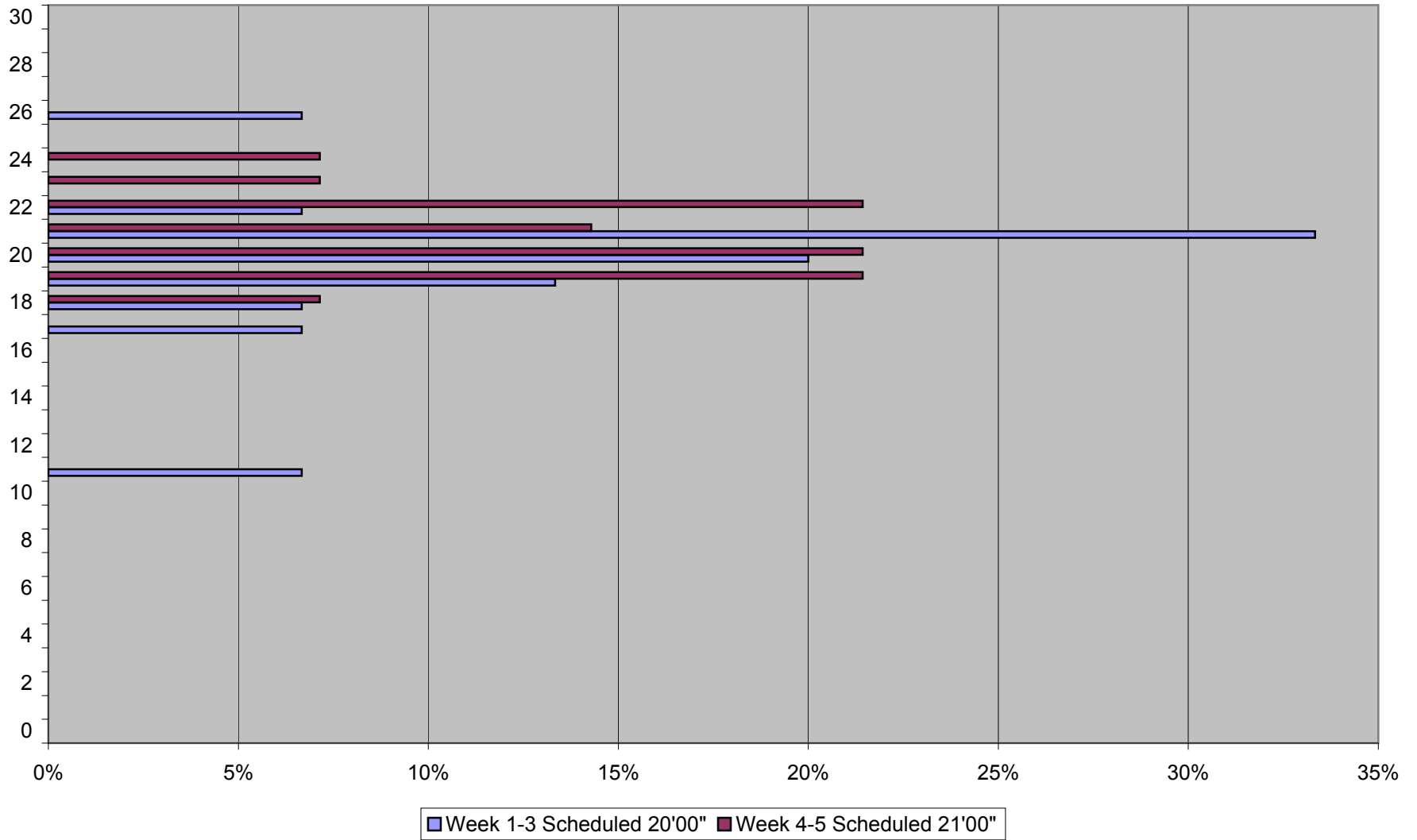
Headway Distribution Saturdays 1800 to 2200 Queen from Long Branch Loop Eastbound November 2011



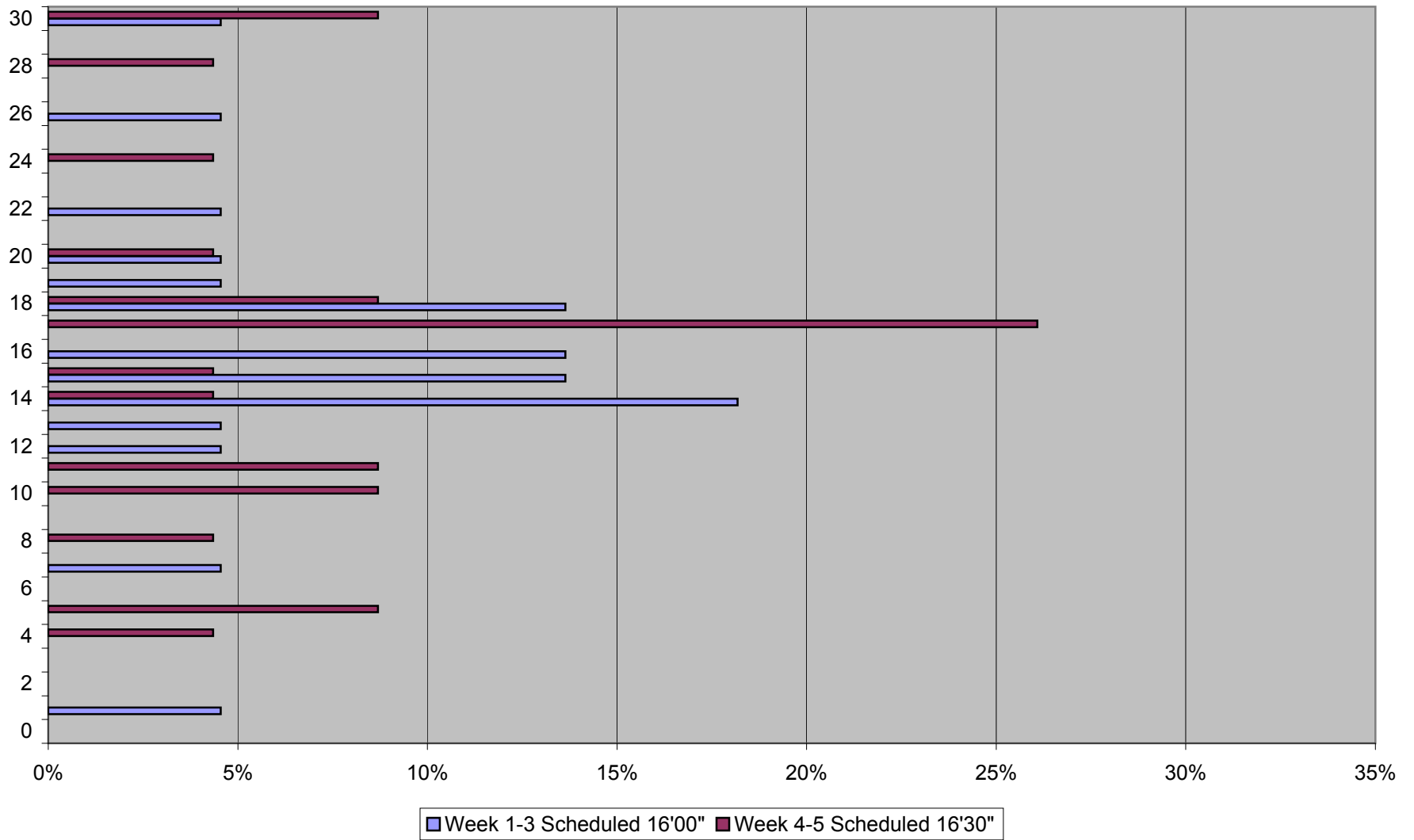
Headway Distribution Saturdays 2200 to 2400 Queen from Long Branch Loop Eastbound November 2011



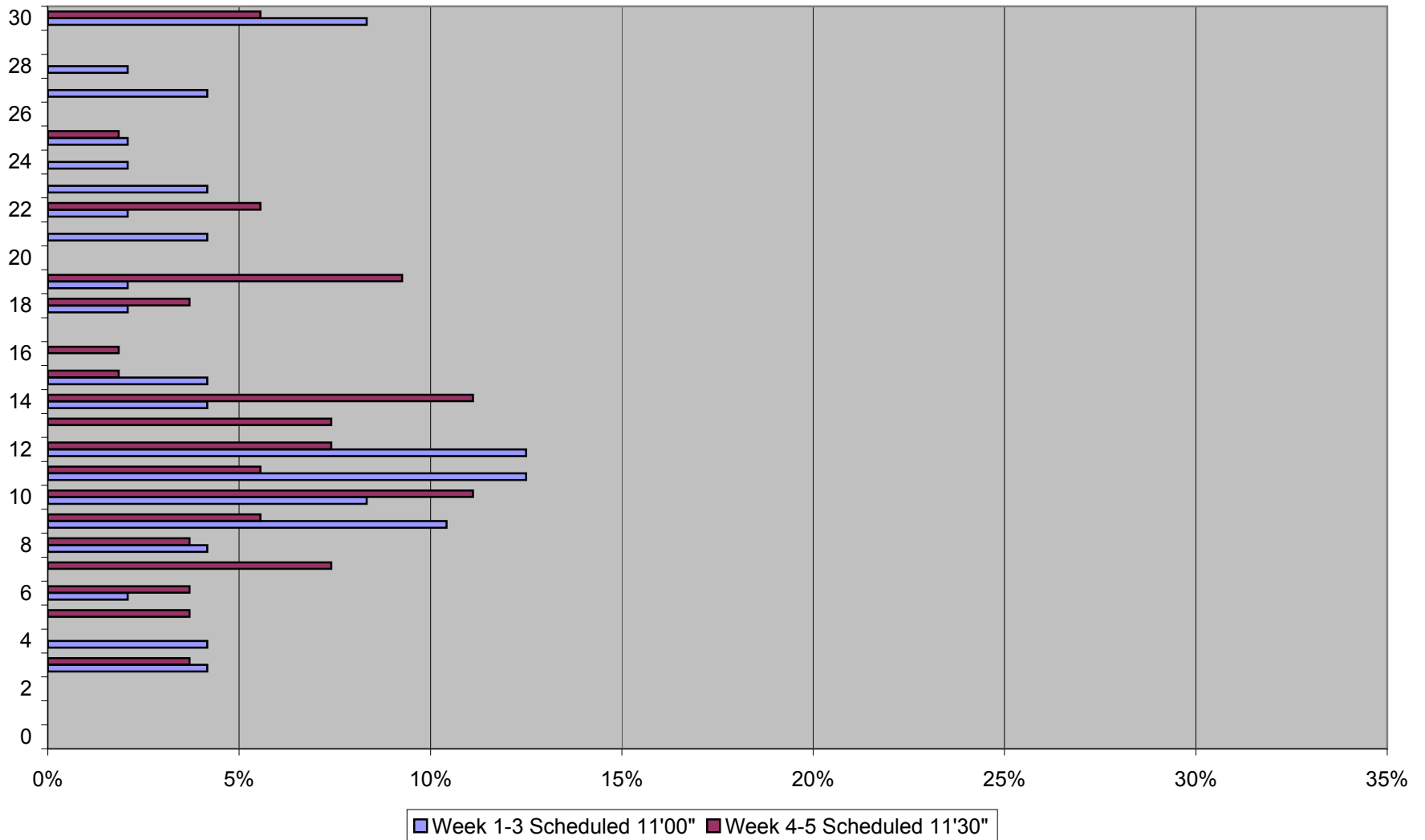
Headway Distribution Sundays 0600 to 0900 Queen from Long Branch Loop Eastbound November 2011



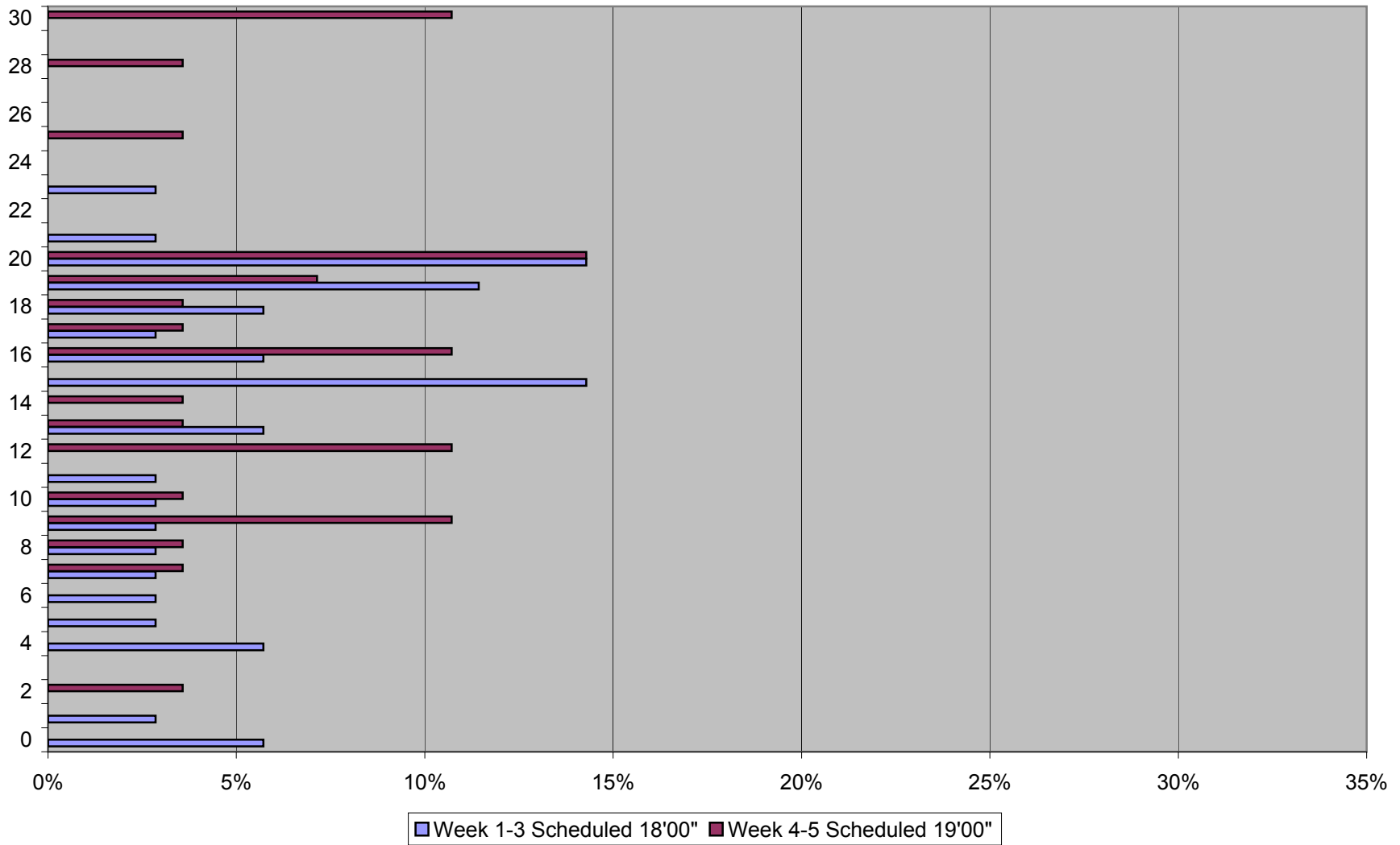
Headway Distribution Sundays 0900 to 1200 Queen from Long Branch Loop Eastbound November 2011



Headway Distribution Sundays 1200 to 1800 Queen from Long Branch Loop Eastbound November 2011



Headway Distribution Sundays 1800 to 2200 Queen from Long Branch Loop Eastbound November 2011



Headway Distribution Sundays 2200 to 2400 Queen from Long Branch Loop Eastbound November 2011

