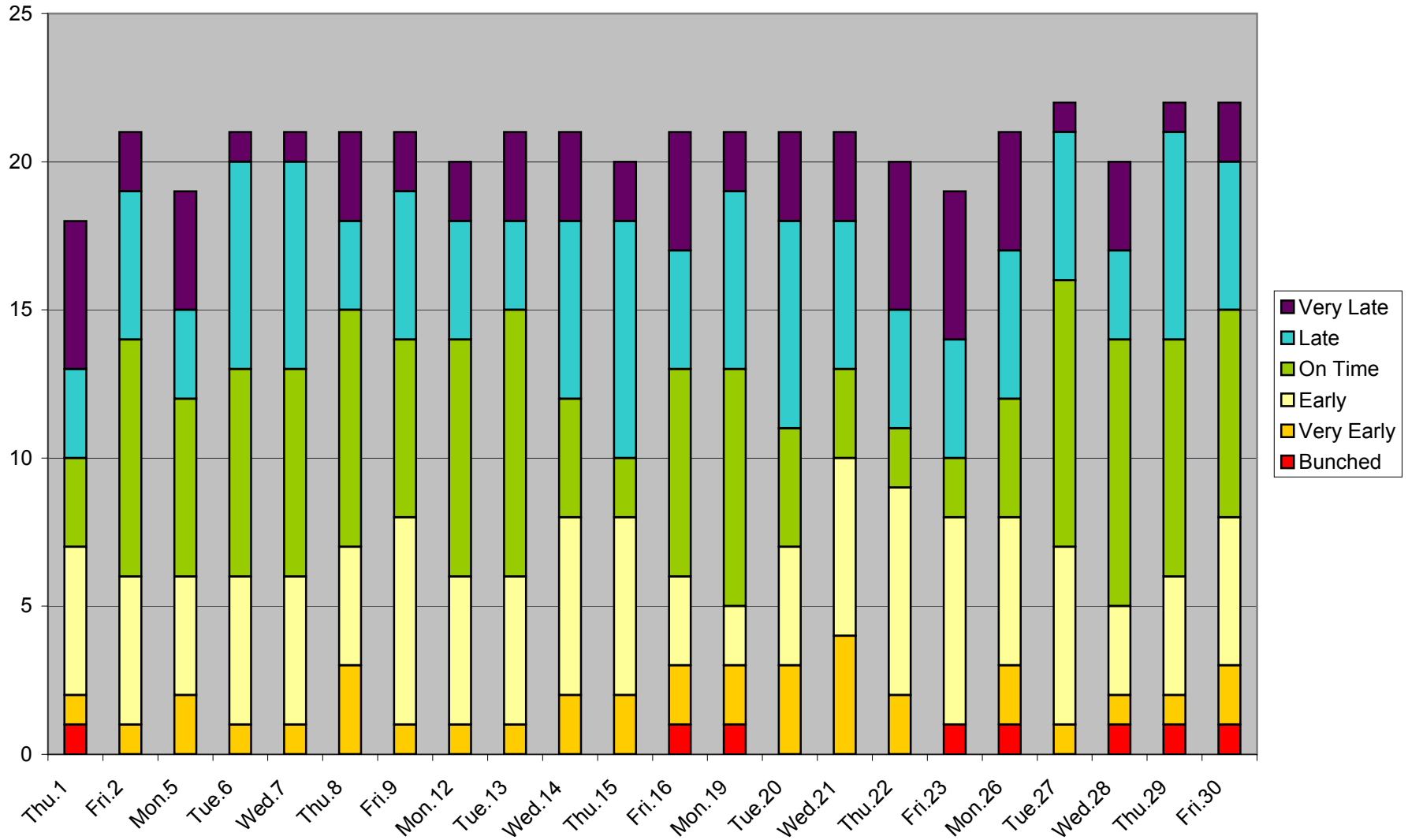
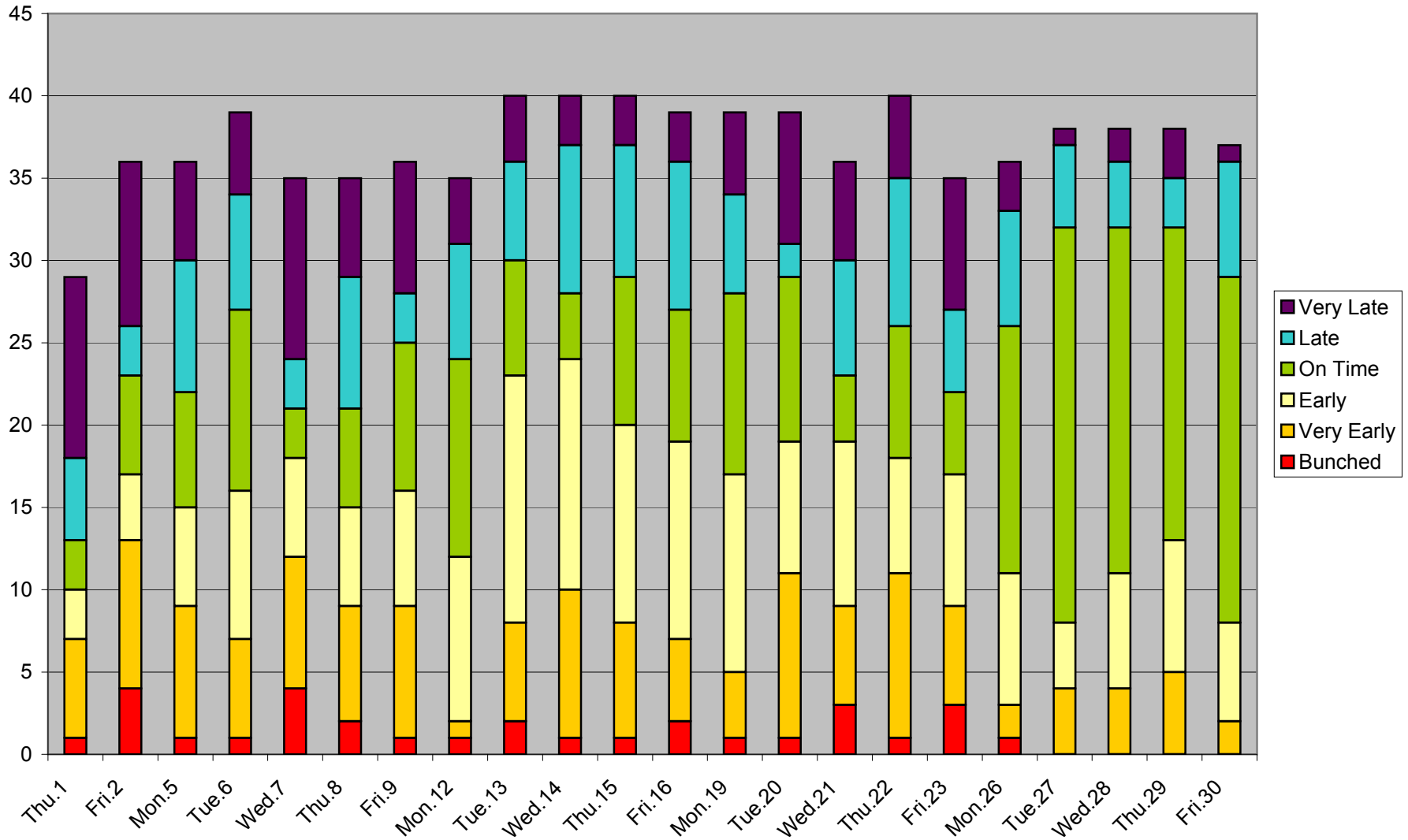


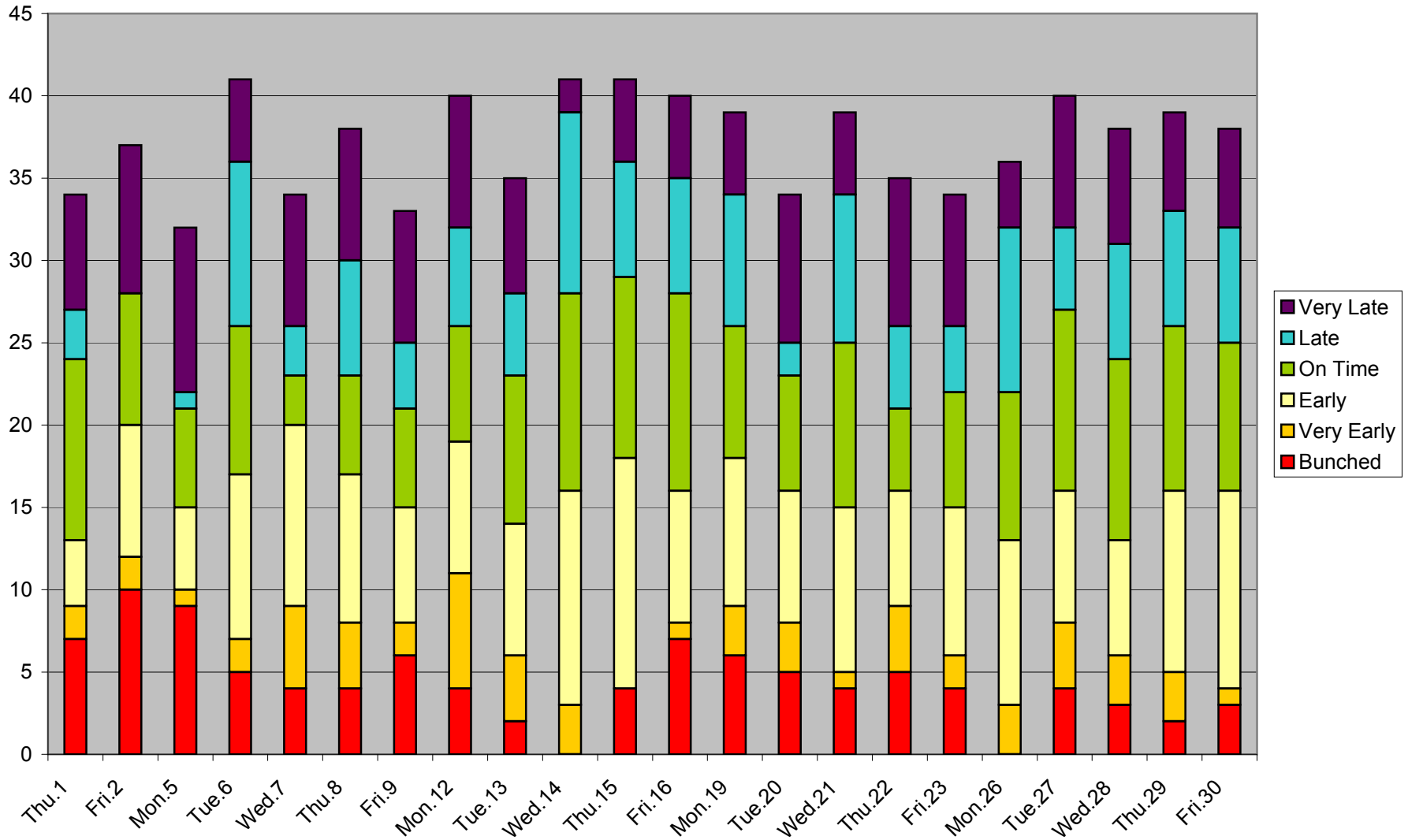
36 Finch West Headway Counts at Humberwood N of Loop Eastbound March 2012 AM Peak



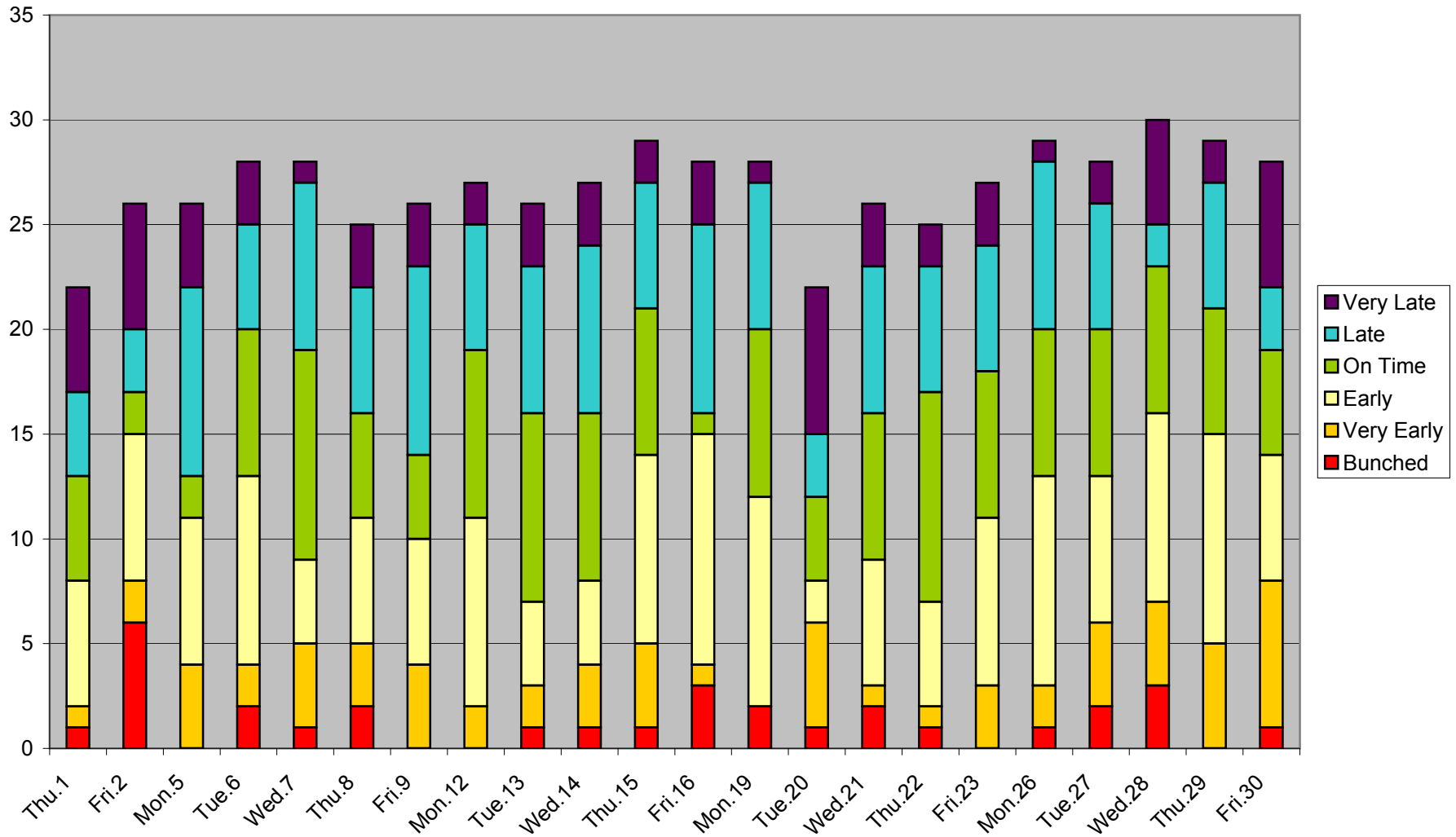
36 Finch West Headway Counts at Humberwood N of Loop Eastbound March 2012 Midday



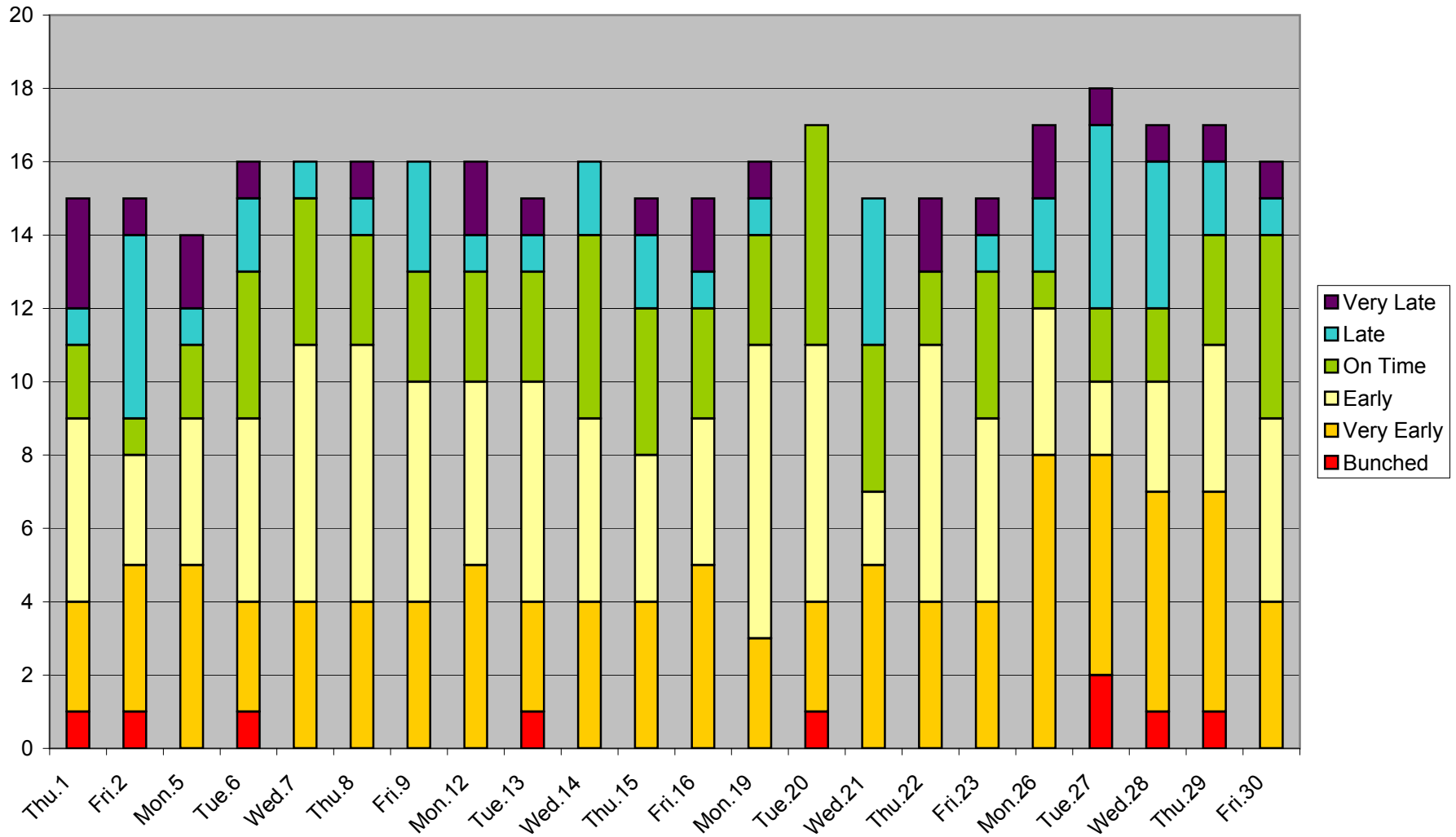
36 Finch West Headway Counts at Humberwood N of Loop Eastbound March 2012 PM Peak



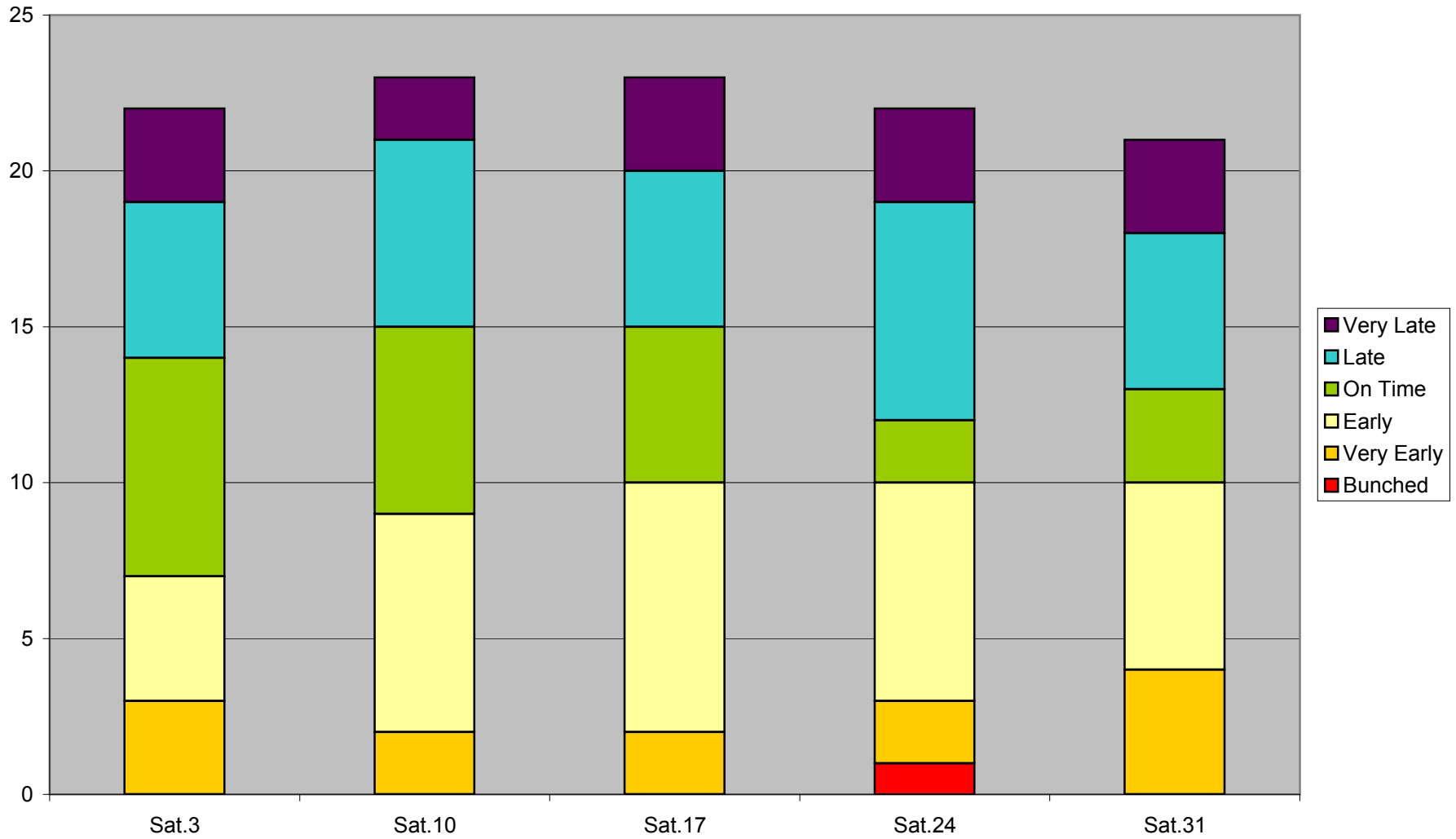
36 Finch West Headway Counts at Humberwood N of Loop Eastbound March 2012 Early Evening



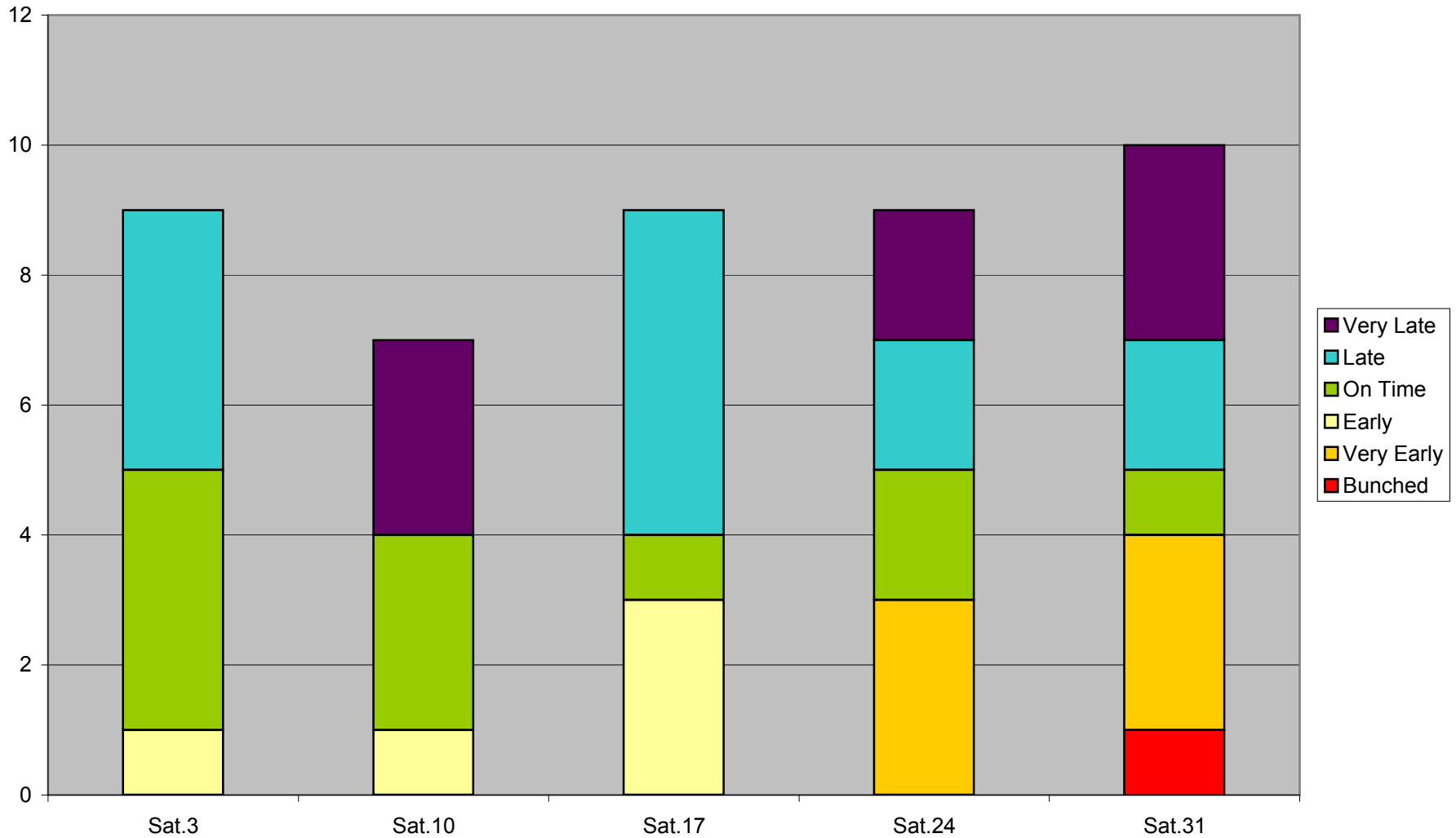
36 Finch West Headway Counts at Humberwood N of Loop Eastbound March 2012 Late Evening



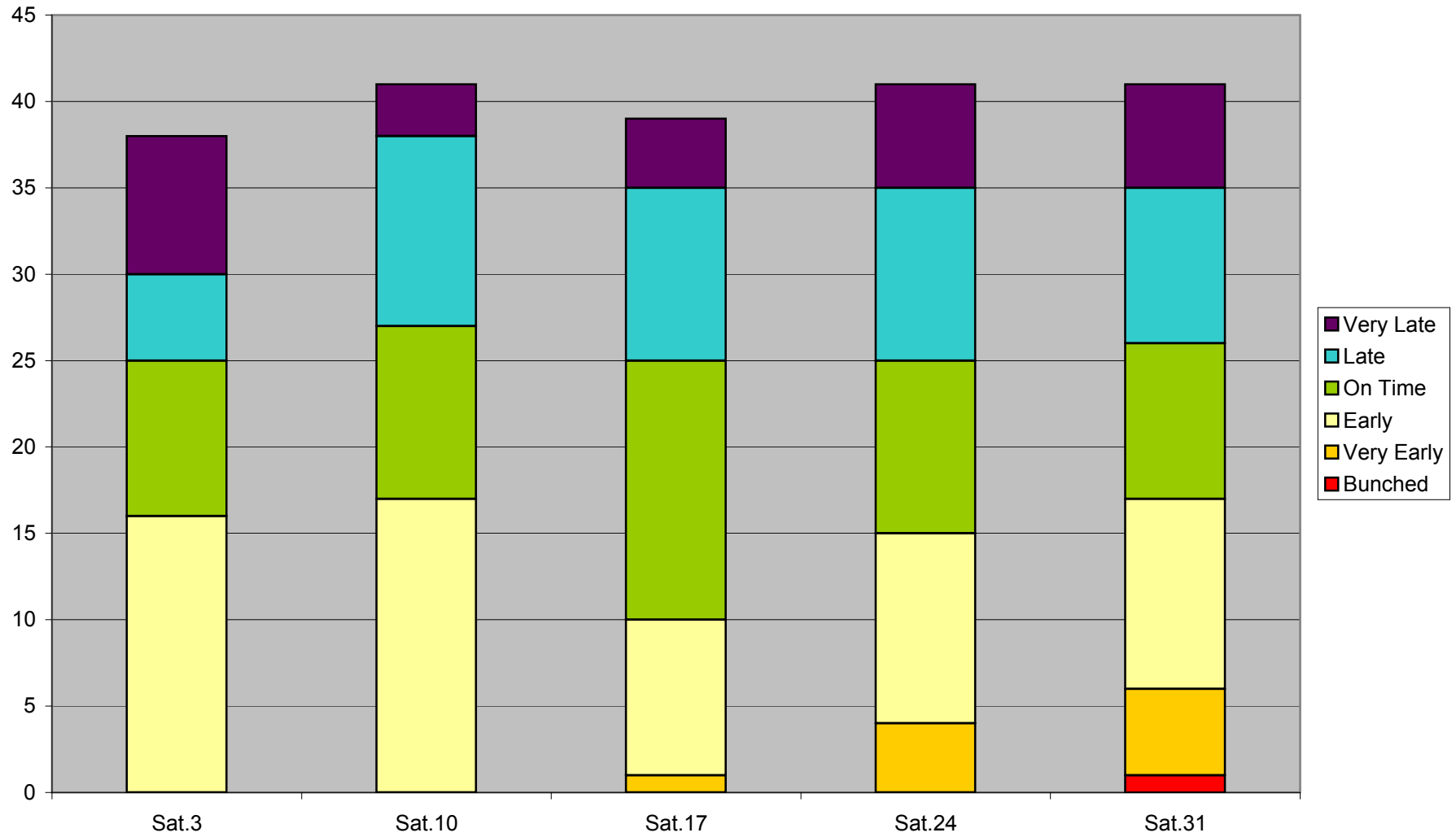
**36 Finch West Headway Counts at Humberwood N of Loop Eastbound March 2012 Saturday
Early Morning**



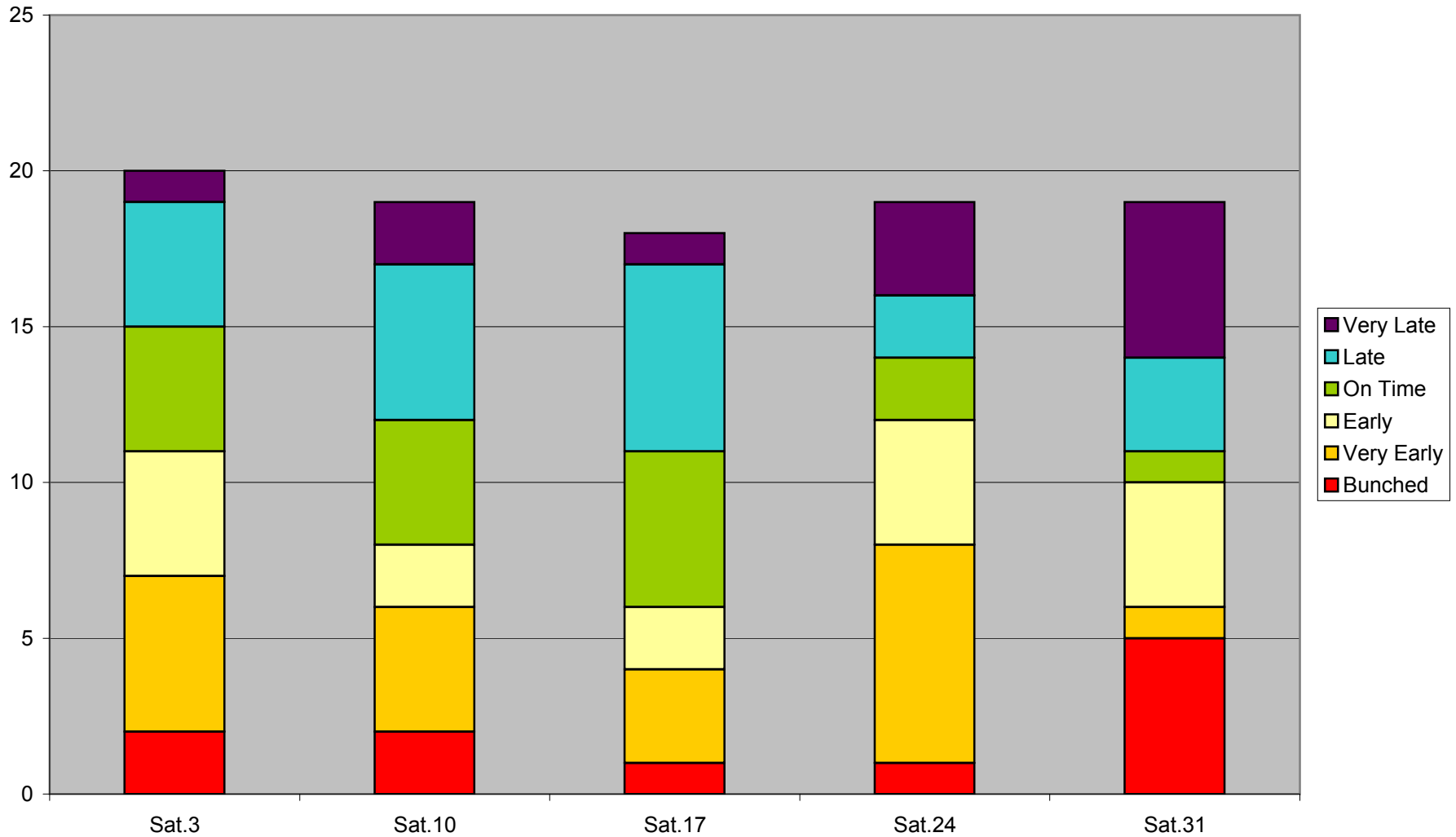
36 Finch West Headway Counts at Humberwood N of Loop Eastbound March 2012 Saturday Morning



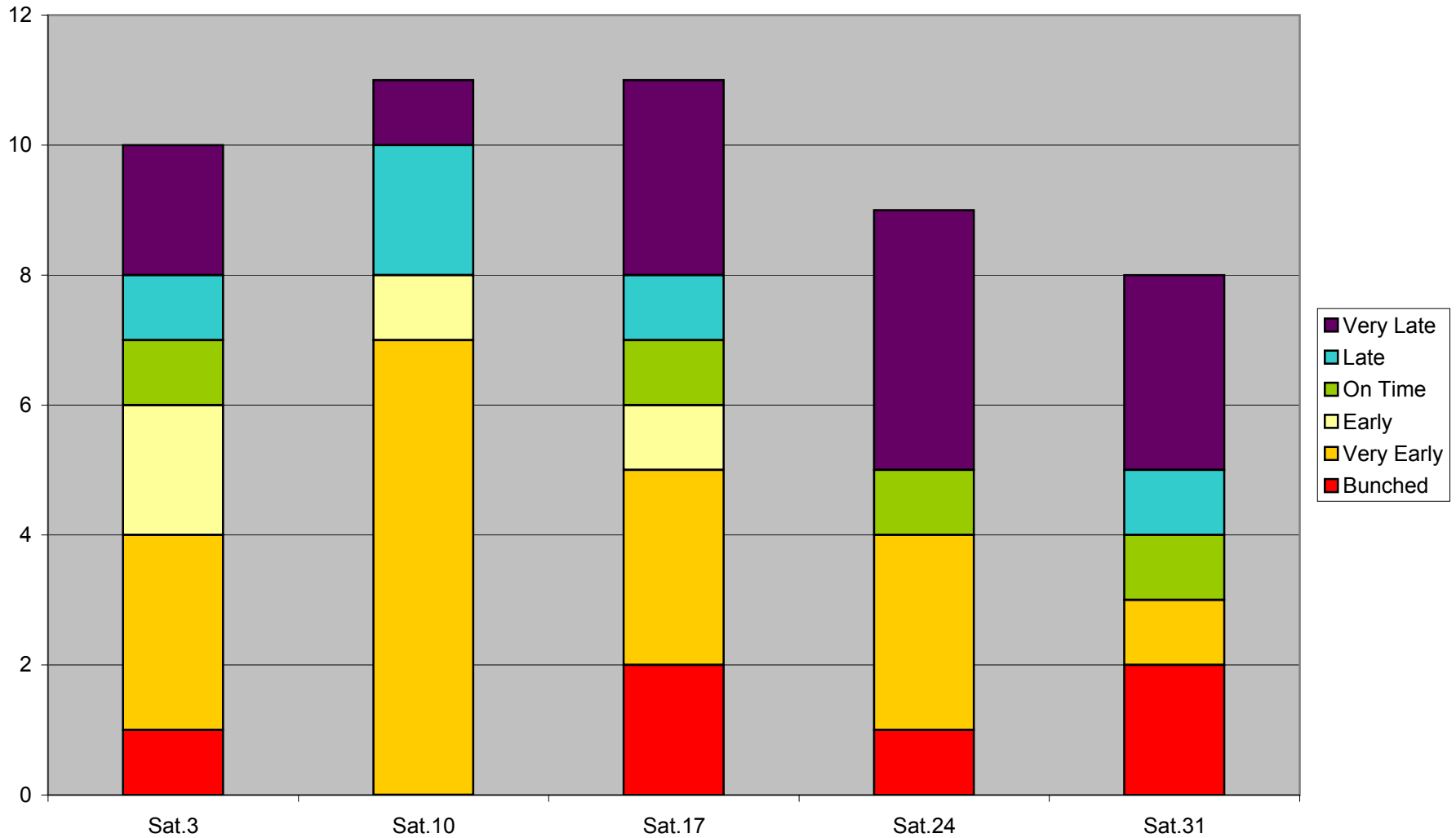
36 Finch West Headway Counts at Humberwood N of Loop Eastbound March 2012 Saturday Afternoon



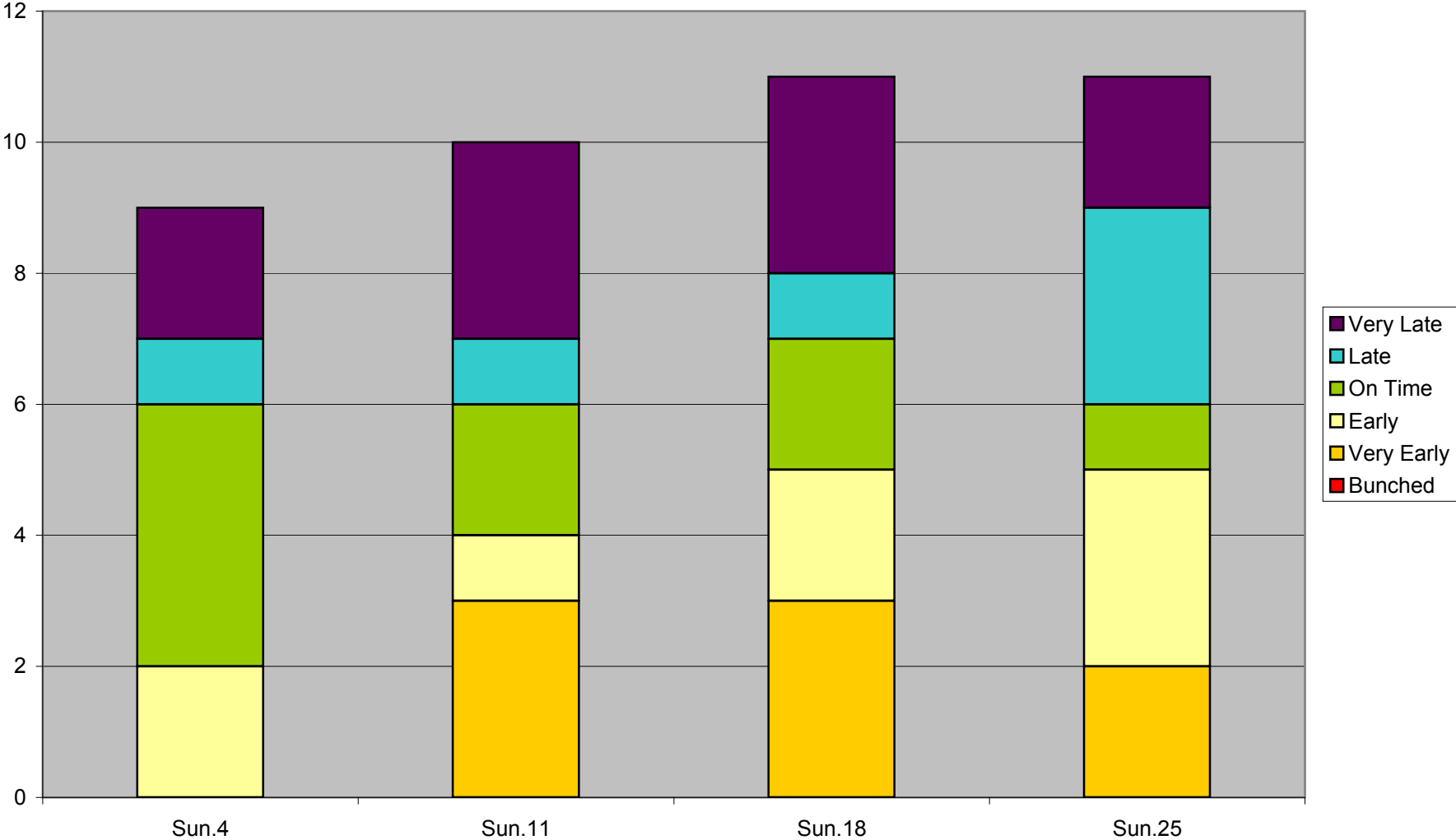
36 Finch West Headway Counts at Humberwood N of Loop Eastbound March 2012 Saturday Early Evening



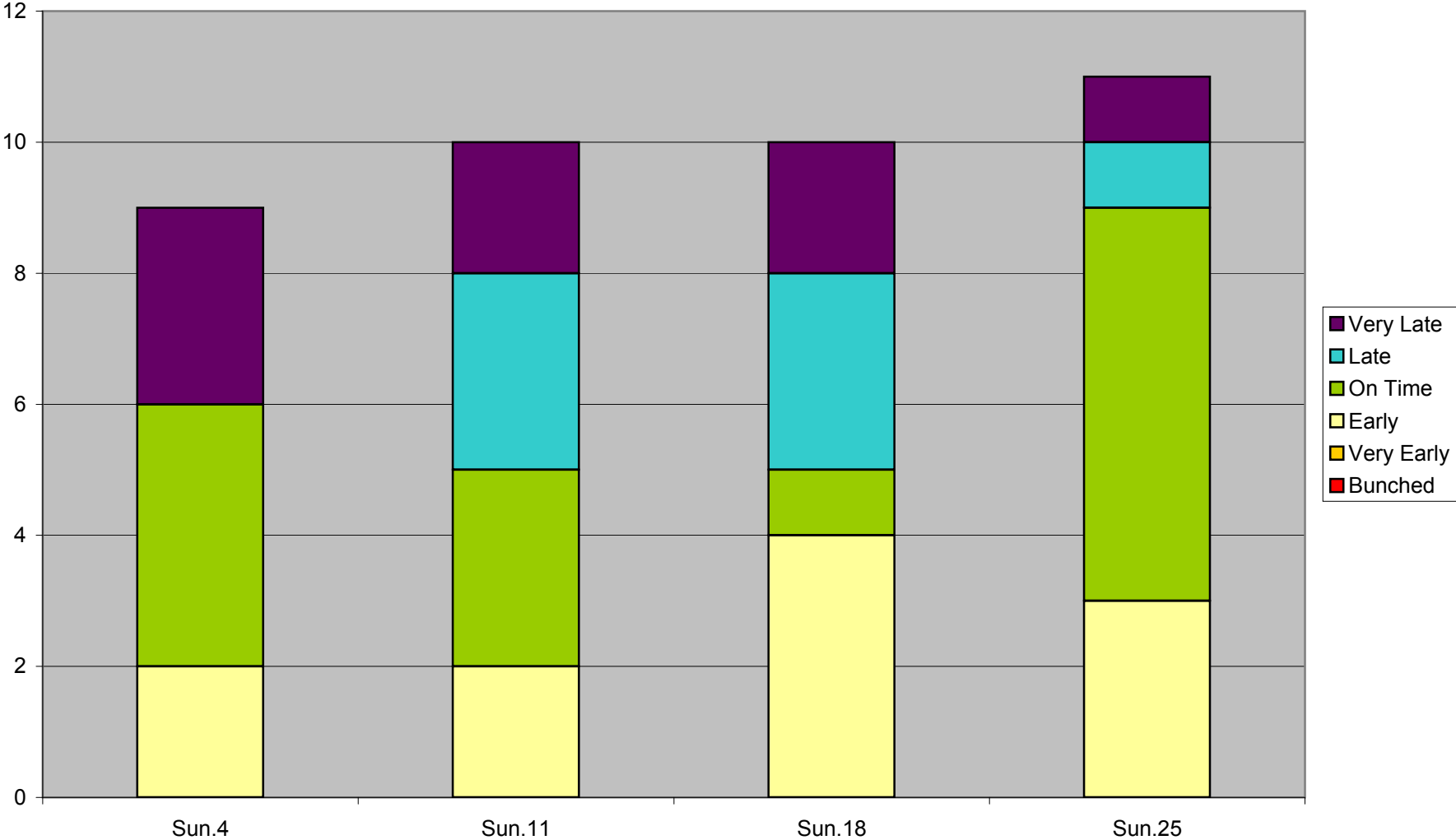
36 Finch West Headway Counts at Humberwood N of Loop Eastbound March 2012 Saturday Late Evening



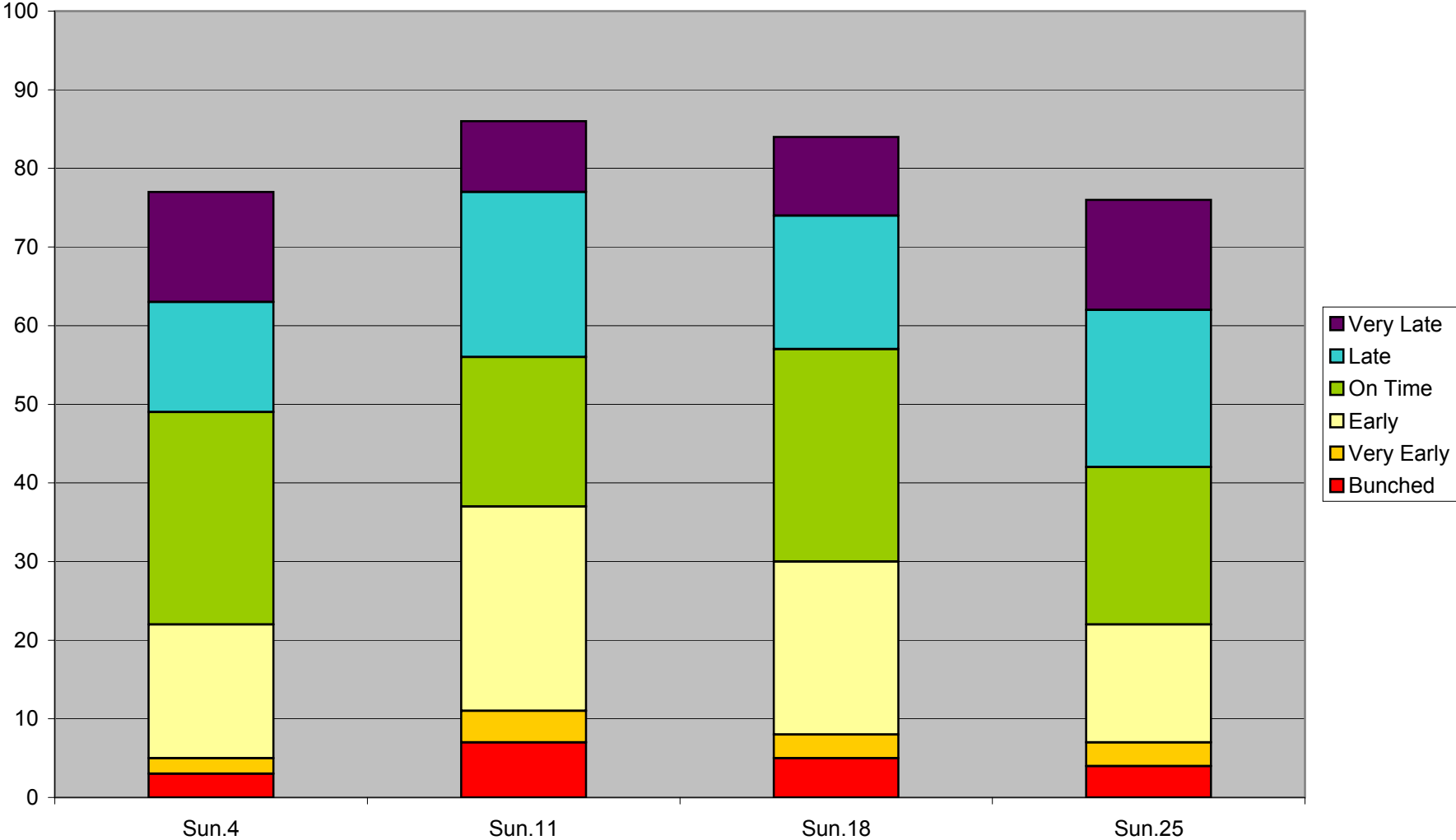
**36 Finch West Headway Counts at Humberwood N of Loop Eastbound March 2012 Sunday
Early Morning**



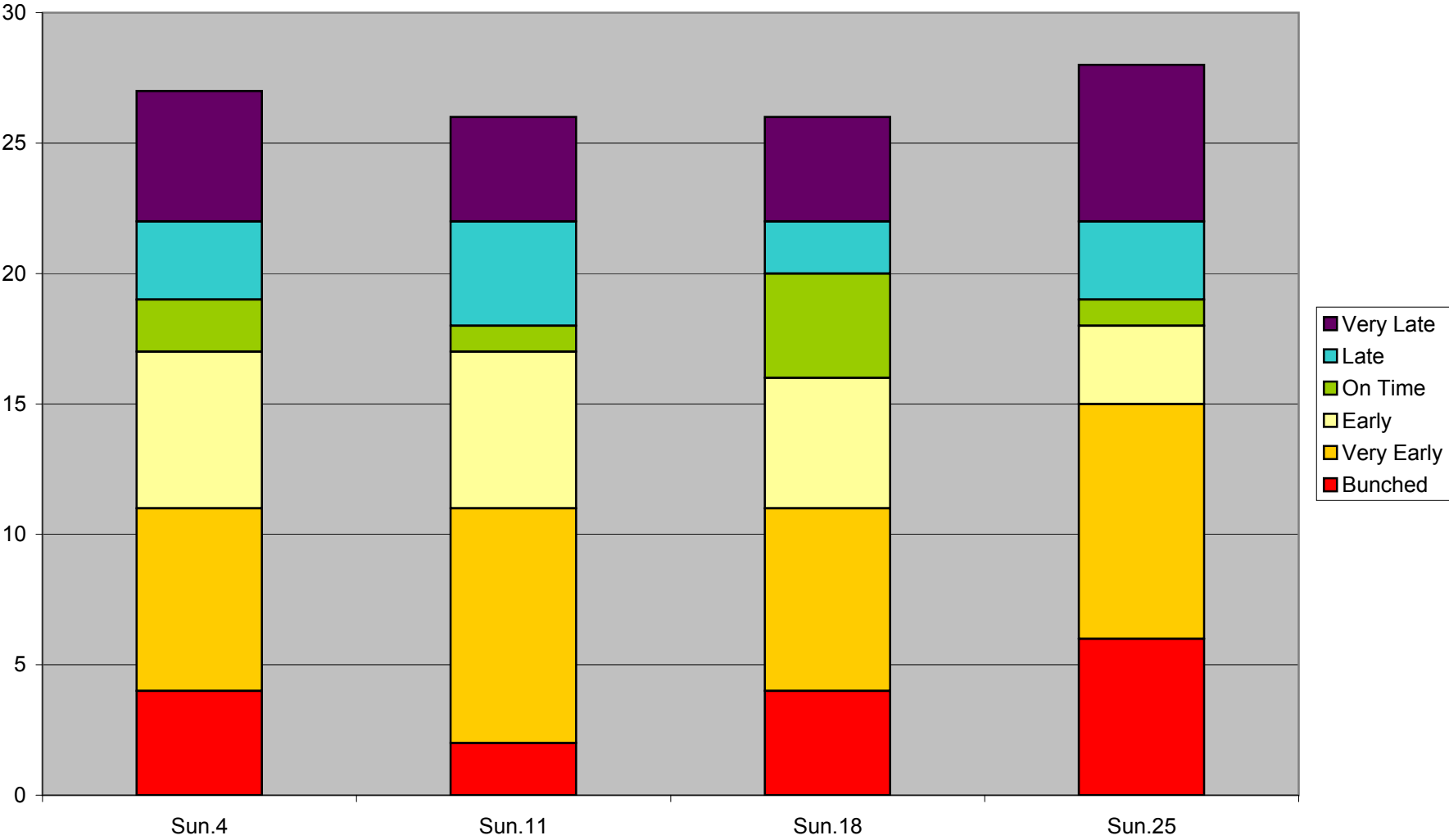
36 Finch West Headway Counts at Humberwood N of Loop Eastbound March 2012 Sunday Morning



36 Finch West Headway Counts at Humberwood N of Loop Eastbound March 2012 Sunday Afternoon



**36 Finch West Headway Counts at Humberwood N of Loop Eastbound March 2012 Sunday
Early Evening**



36 Finch West Headway Counts at Humberwood N of Loop Eastbound March 2012 Sunday Late Evening

