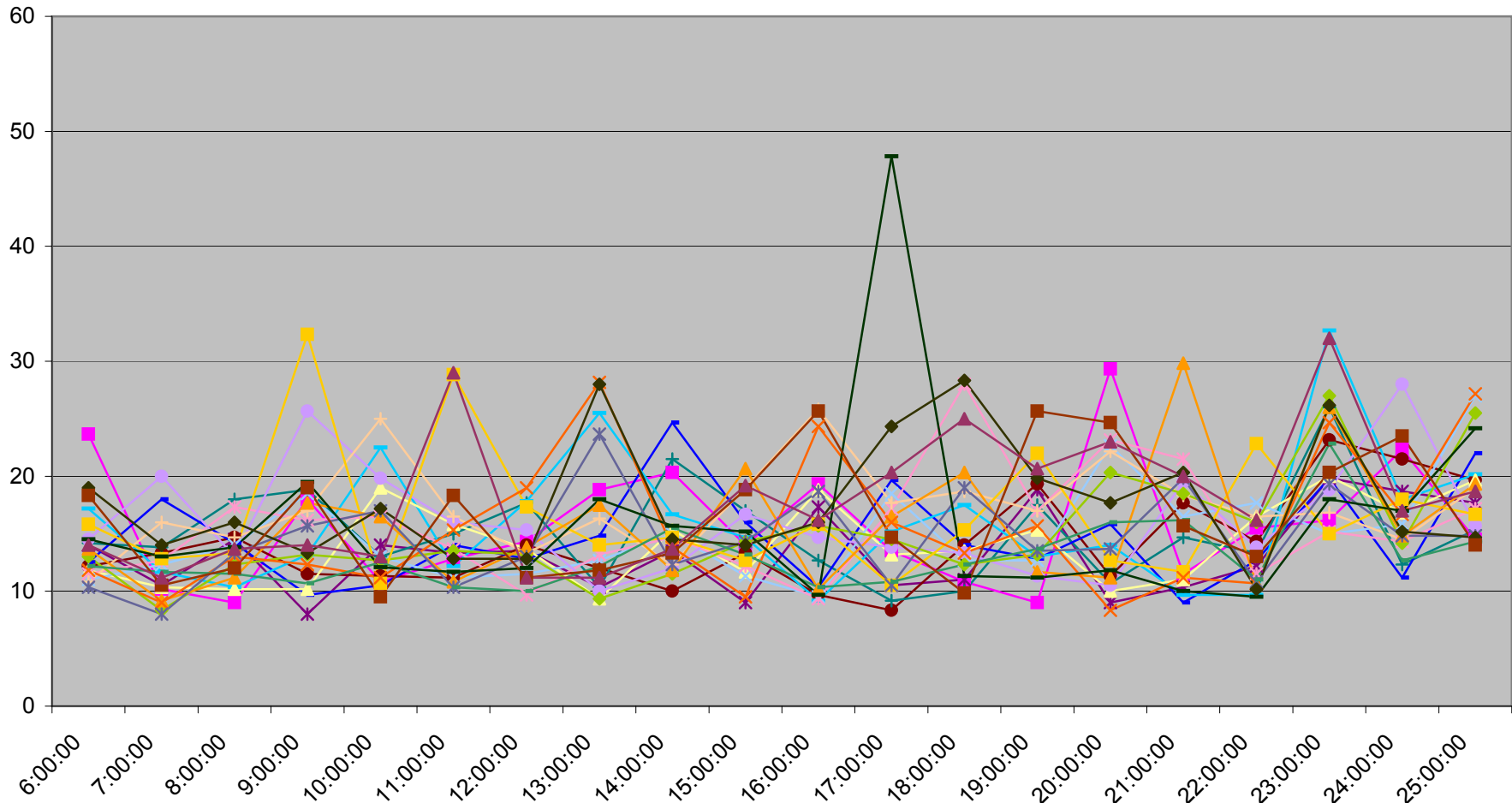
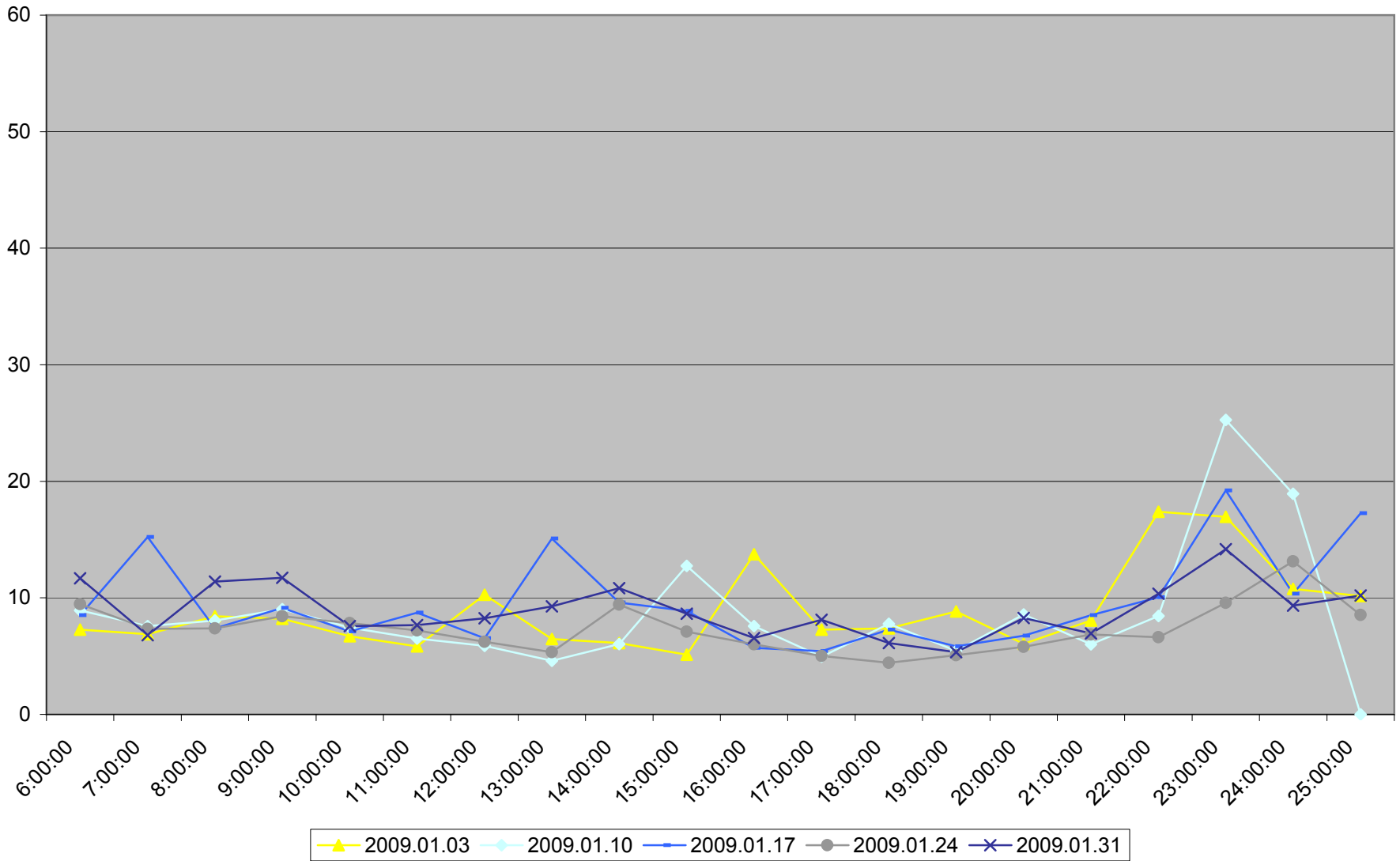


501 Queen Maximum Headway to Neville Loop Weekdays January 2009

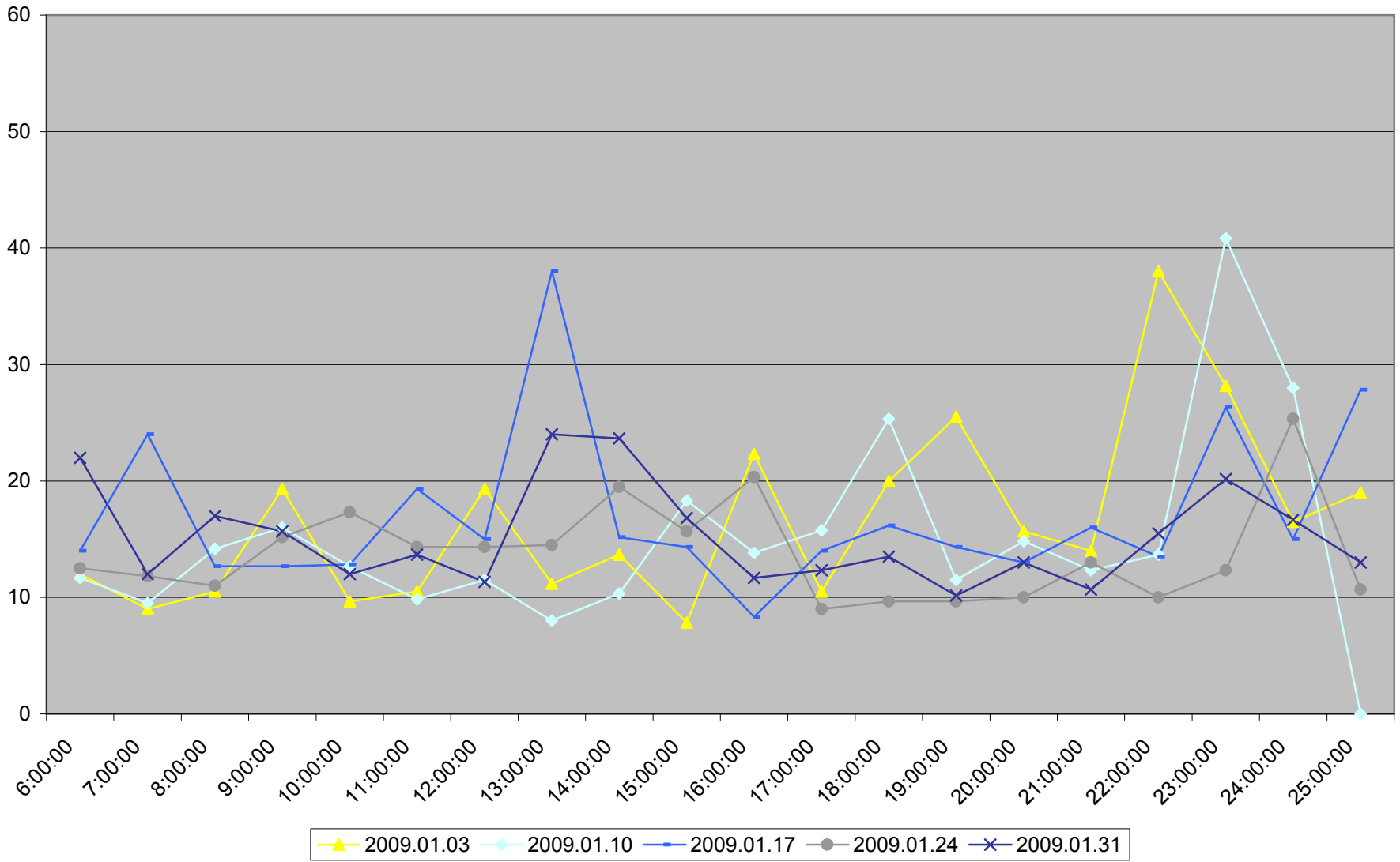


- | | | | | | | |
|------------|------------|------------|------------|------------|------------|------------|
| 2009.01.02 | 2009.01.05 | 2009.01.06 | 2009.01.07 | 2009.01.08 | 2009.01.09 | 2009.01.12 |
| 2009.01.13 | 2009.01.14 | 2009.01.15 | 2009.01.16 | 2009.01.19 | 2009.01.20 | 2009.01.21 |
| 2009.01.22 | 2009.01.23 | 2009.01.26 | 2009.01.27 | 2009.01.28 | 2009.01.29 | 2009.01.30 |

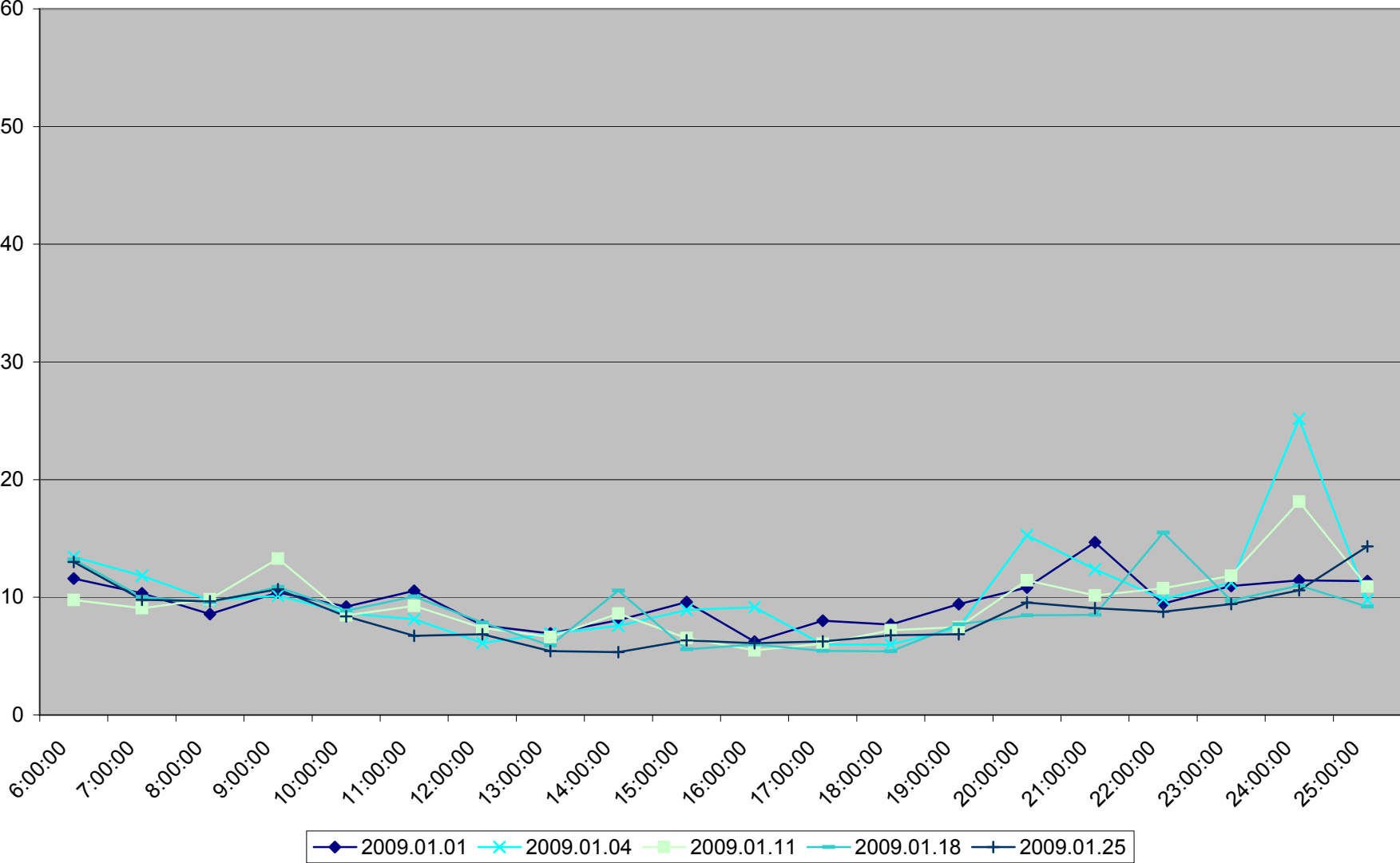
501 Queen Average Headway to Neville Loop Saturdays January 2009



501 Queen Maximum Headway to Neville Loop Saturdays January 2009



501 Queen Average Headway to Neville Loop Sundays January 2009



501 Queen Maximum Headway to Neville Loop Sundays January 2009

