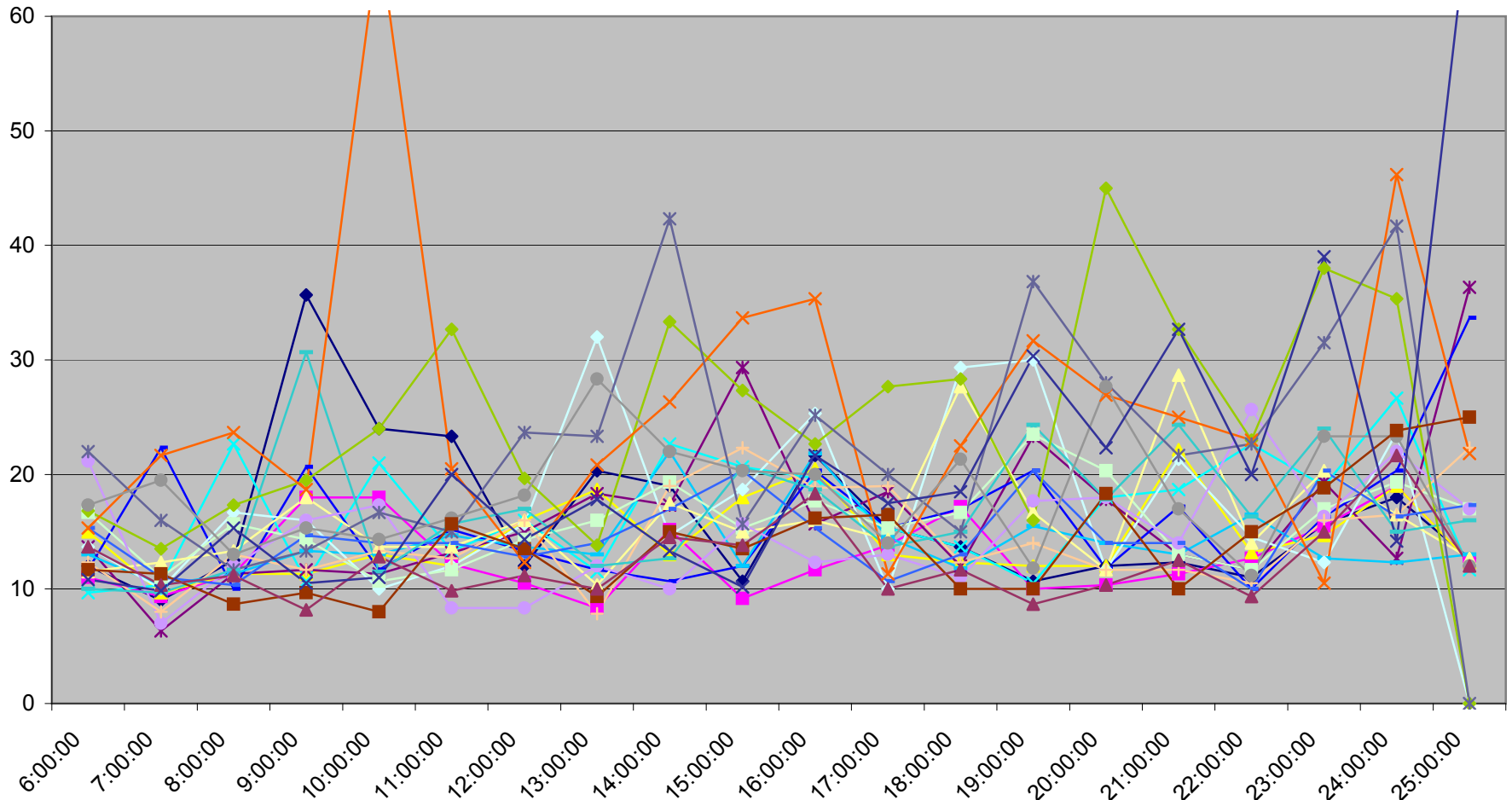
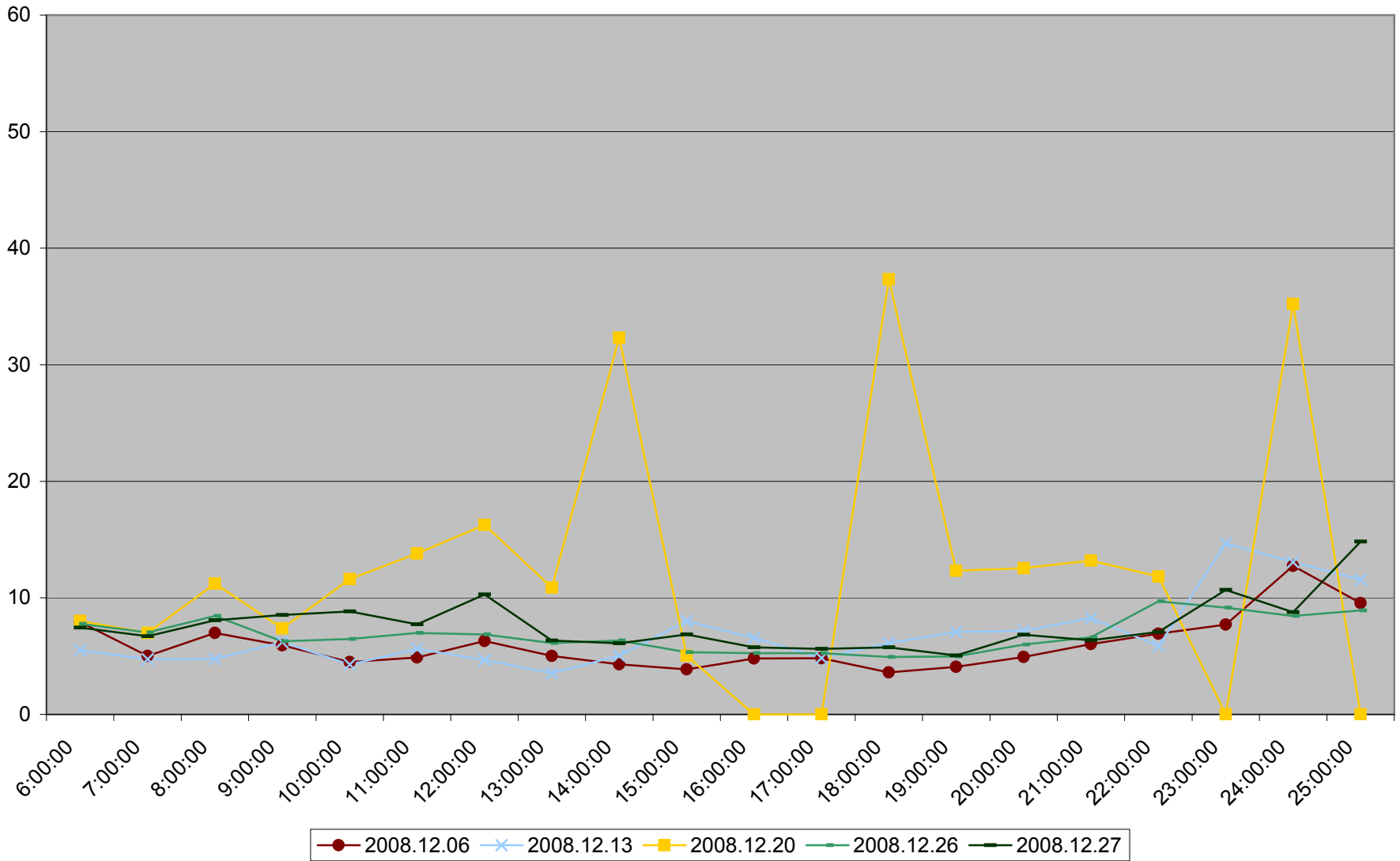


501 Queen Maximum Headway to Neville Loop Weekdays December 2008

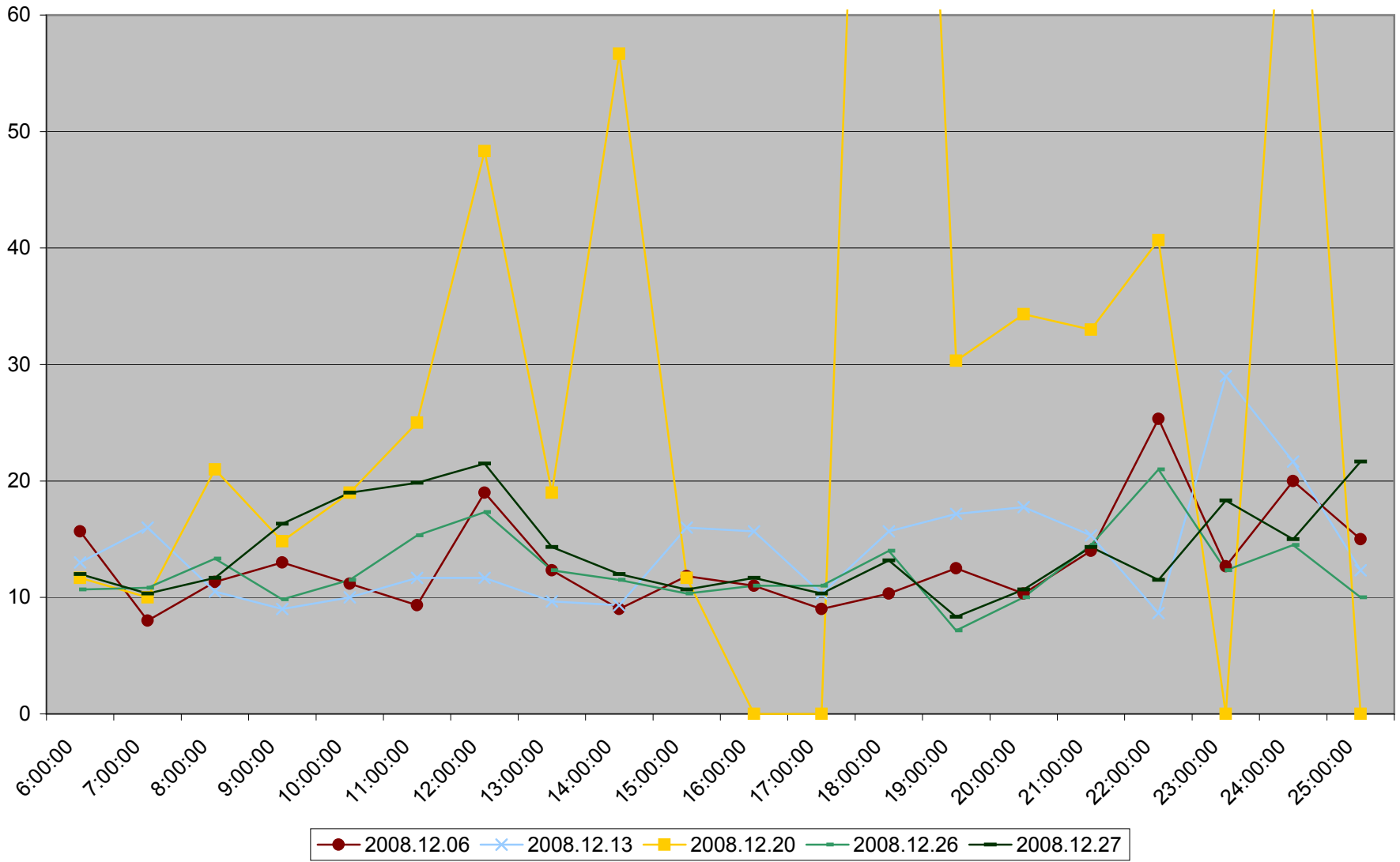


- | | | | | | | |
|------------|------------|------------|------------|------------|------------|------------|
| 2008.12.01 | 2008.12.02 | 2008.12.03 | 2008.12.04 | 2008.12.05 | 2008.12.08 | 2008.12.09 |
| 2008.12.10 | 2008.12.11 | 2008.12.12 | 2008.12.15 | 2008.12.16 | 2008.12.17 | 2008.12.18 |
| 2008.12.19 | 2008.12.22 | 2008.12.23 | 2008.12.24 | 2008.12.29 | 2008.12.30 | 2008.12.31 |

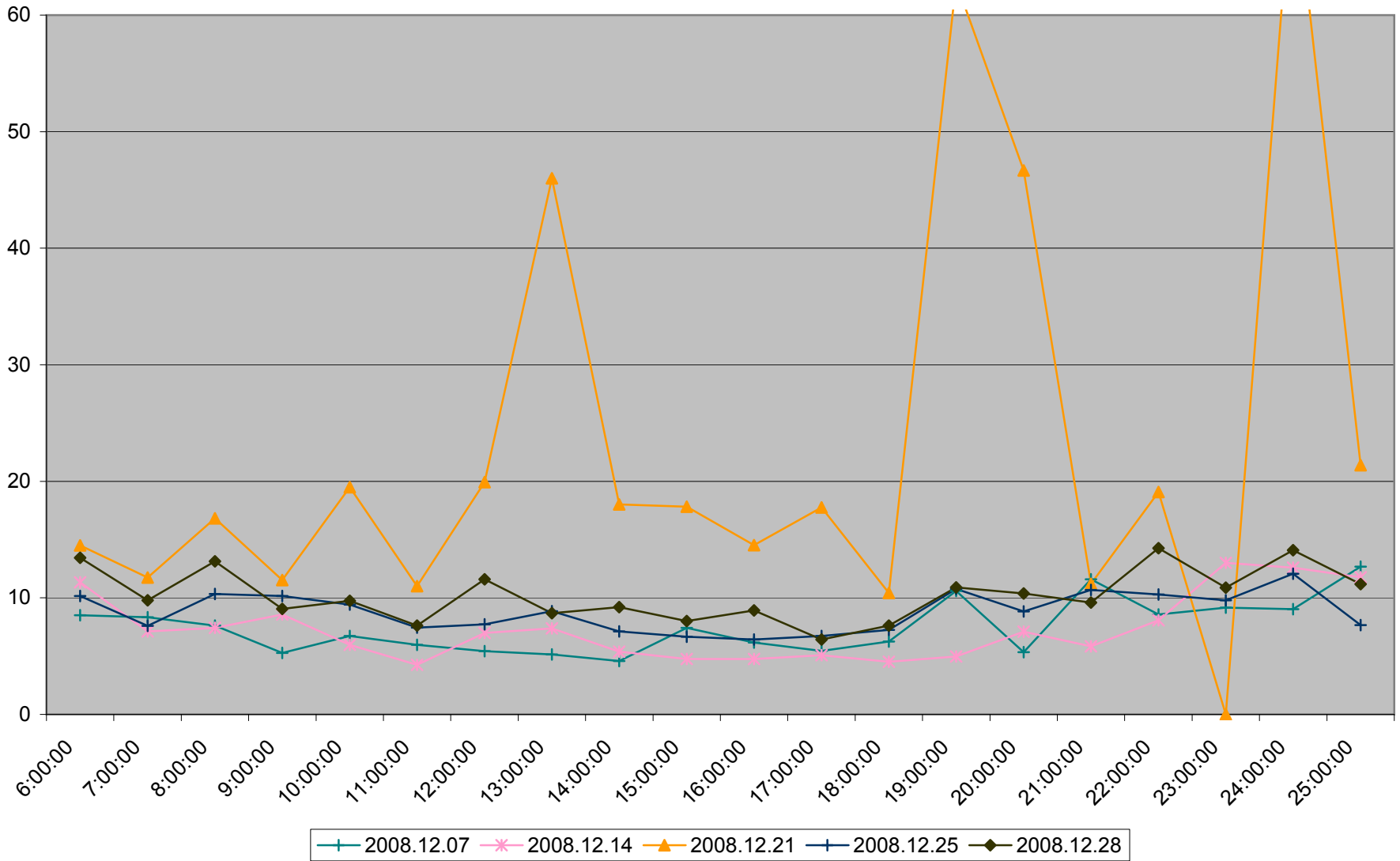
501 Queen Average Headway to Neville Loop Saturdays December 2008



501 Queen Maximum Headway to Neville Loop Saturdays December 2008



501 Queen Average Headway to Neville Loop Sundays December 2008



501 Queen Maximum Headway to Neville Loop Sundays December 2008

