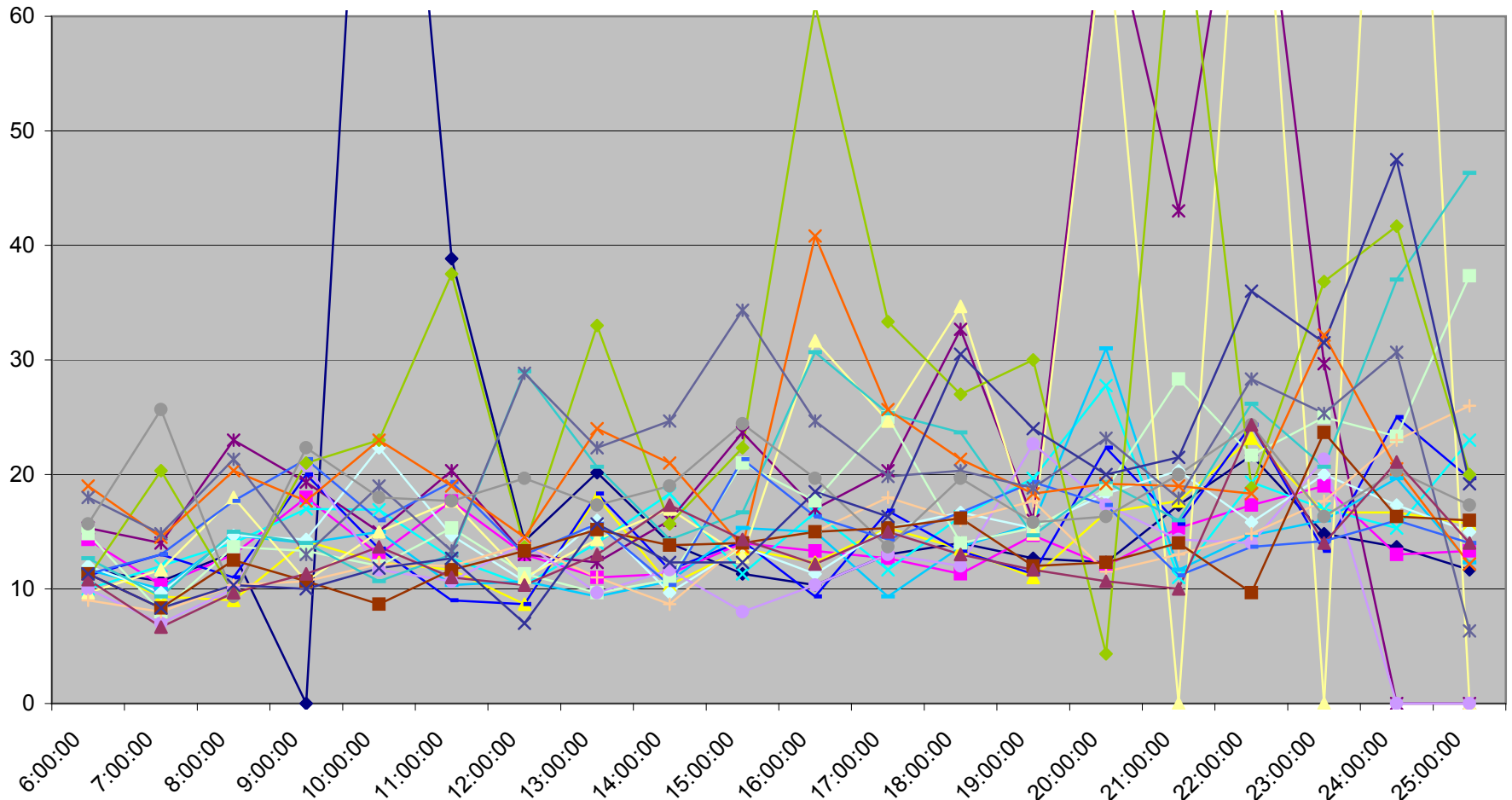


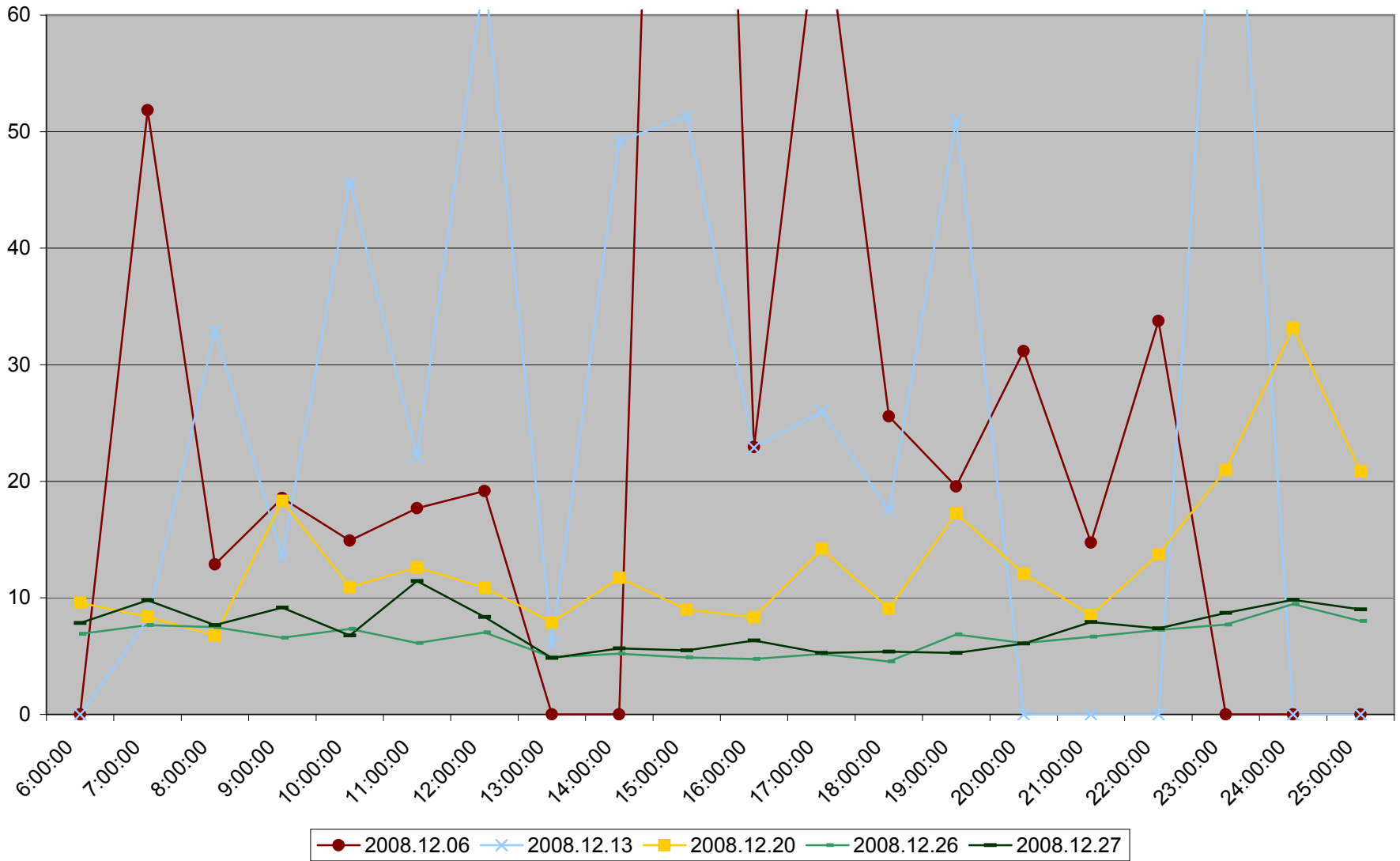


501 Queen Maximum Headway to Humber Loop Weekdays December 2008

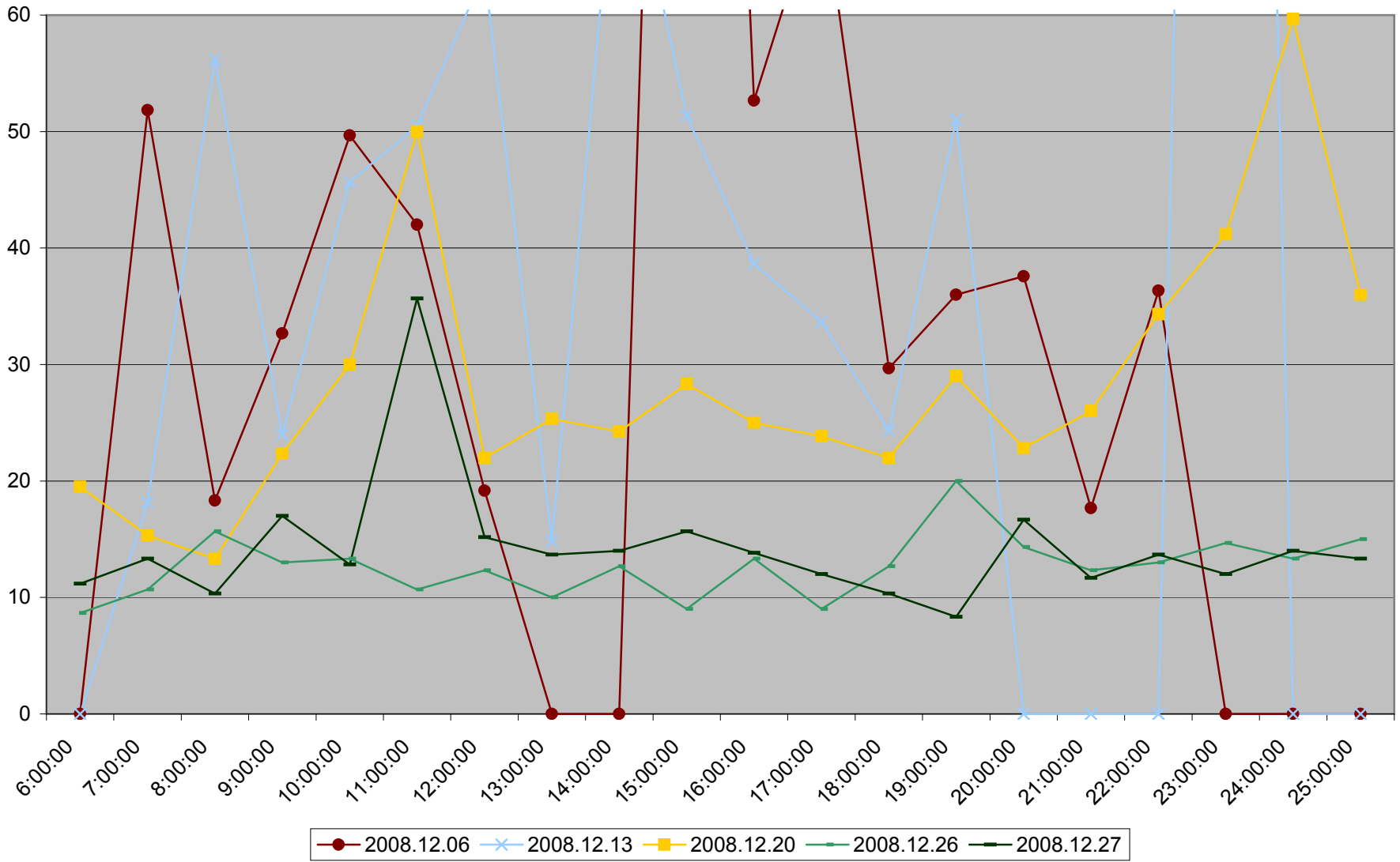


- |            |            |            |            |            |            |            |
|------------|------------|------------|------------|------------|------------|------------|
| 2008.12.01 | 2008.12.02 | 2008.12.03 | 2008.12.04 | 2008.12.05 | 2008.12.08 | 2008.12.09 |
| 2008.12.10 | 2008.12.11 | 2008.12.12 | 2008.12.15 | 2008.12.16 | 2008.12.17 | 2008.12.18 |
| 2008.12.19 | 2008.12.22 | 2008.12.23 | 2008.12.24 | 2008.12.29 | 2008.12.30 | 2008.12.31 |

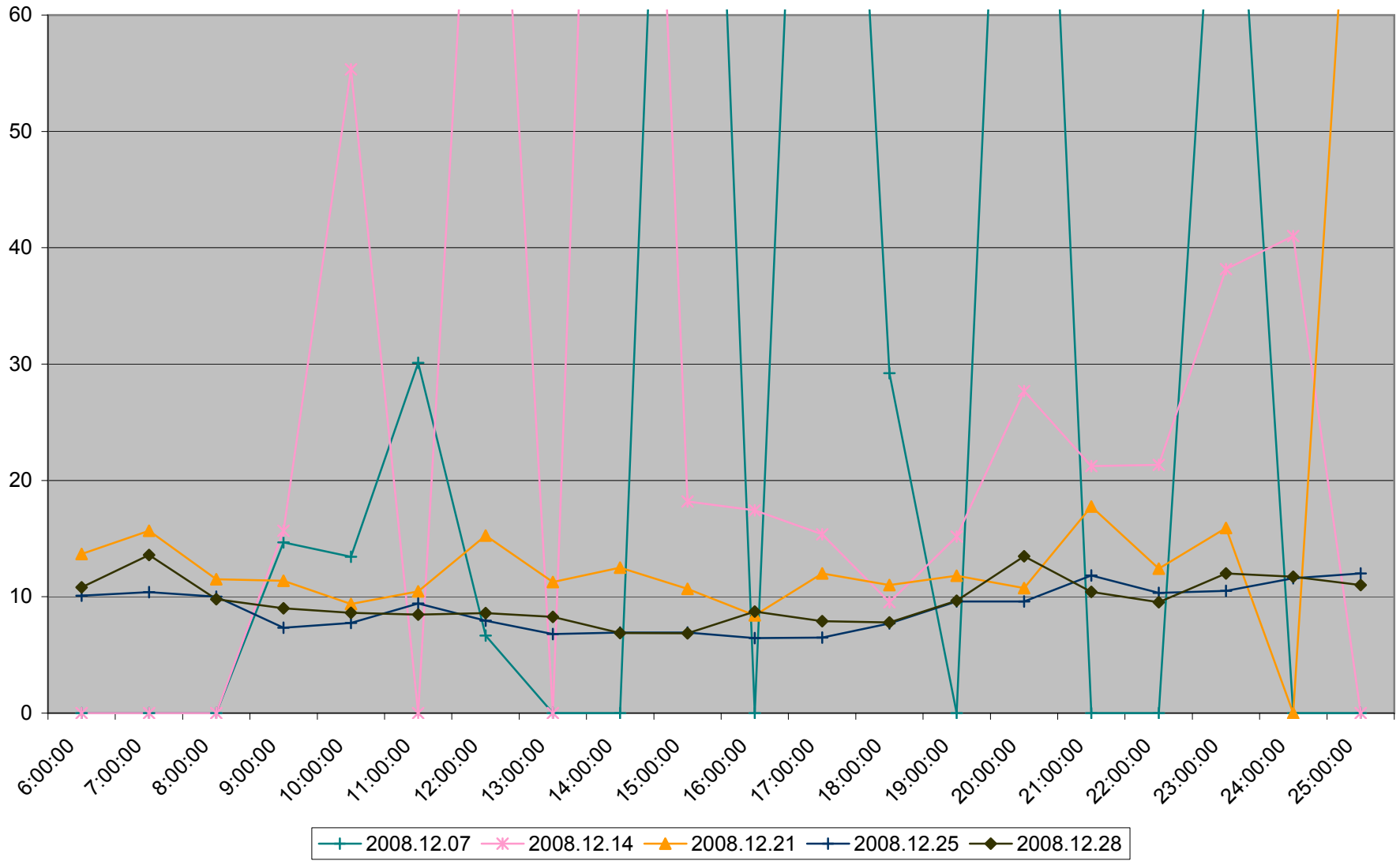
501 Queen Average Headway to Humber Loop Saturdays December 2008



501 Queen Maximum Headway to Humber Loop Saturdays December 2008



501 Queen Average Headway to Humber Loop Sundays December 2008



501 Queen Maximum Headway to Humber Loop Sundays December 2008

