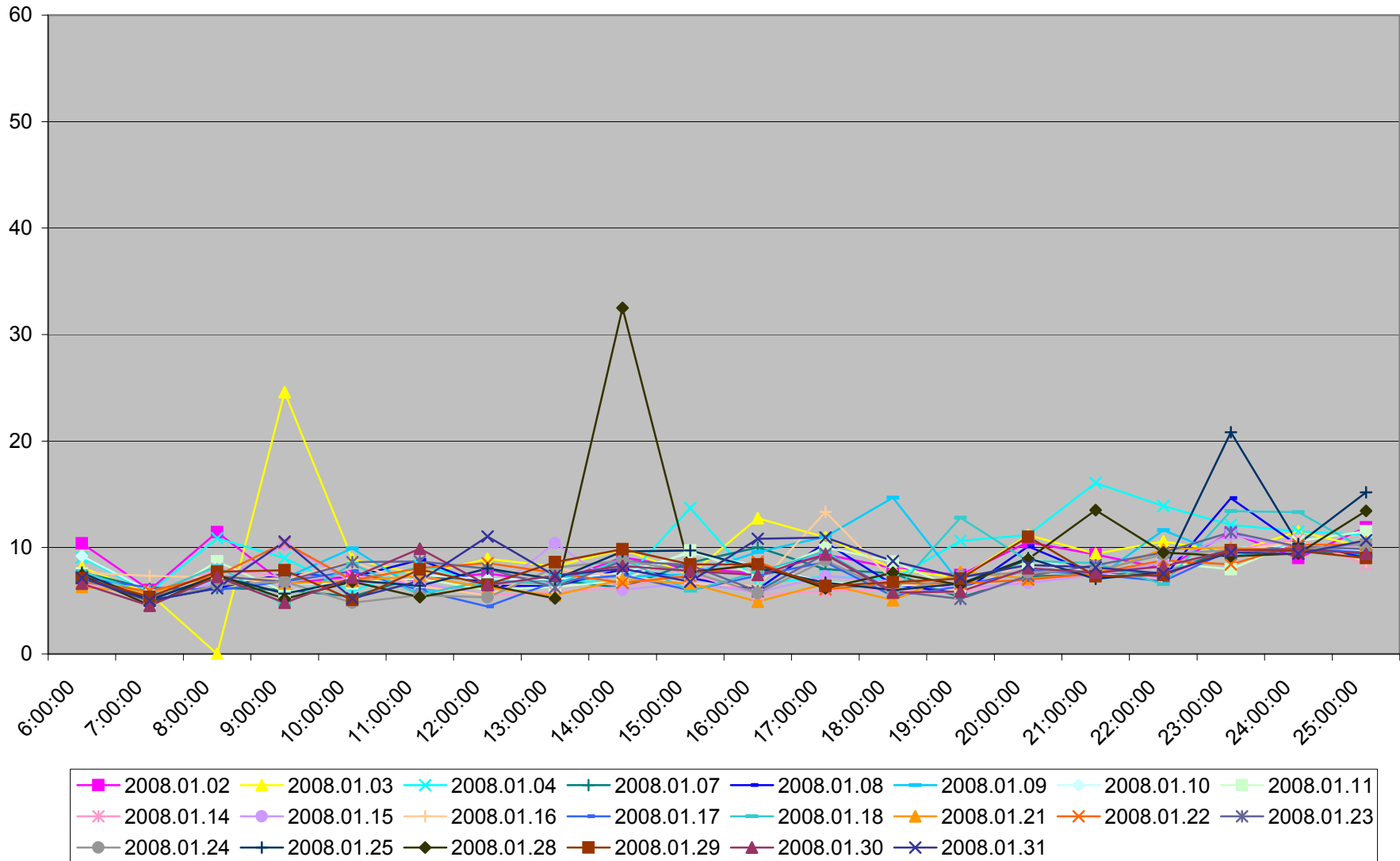
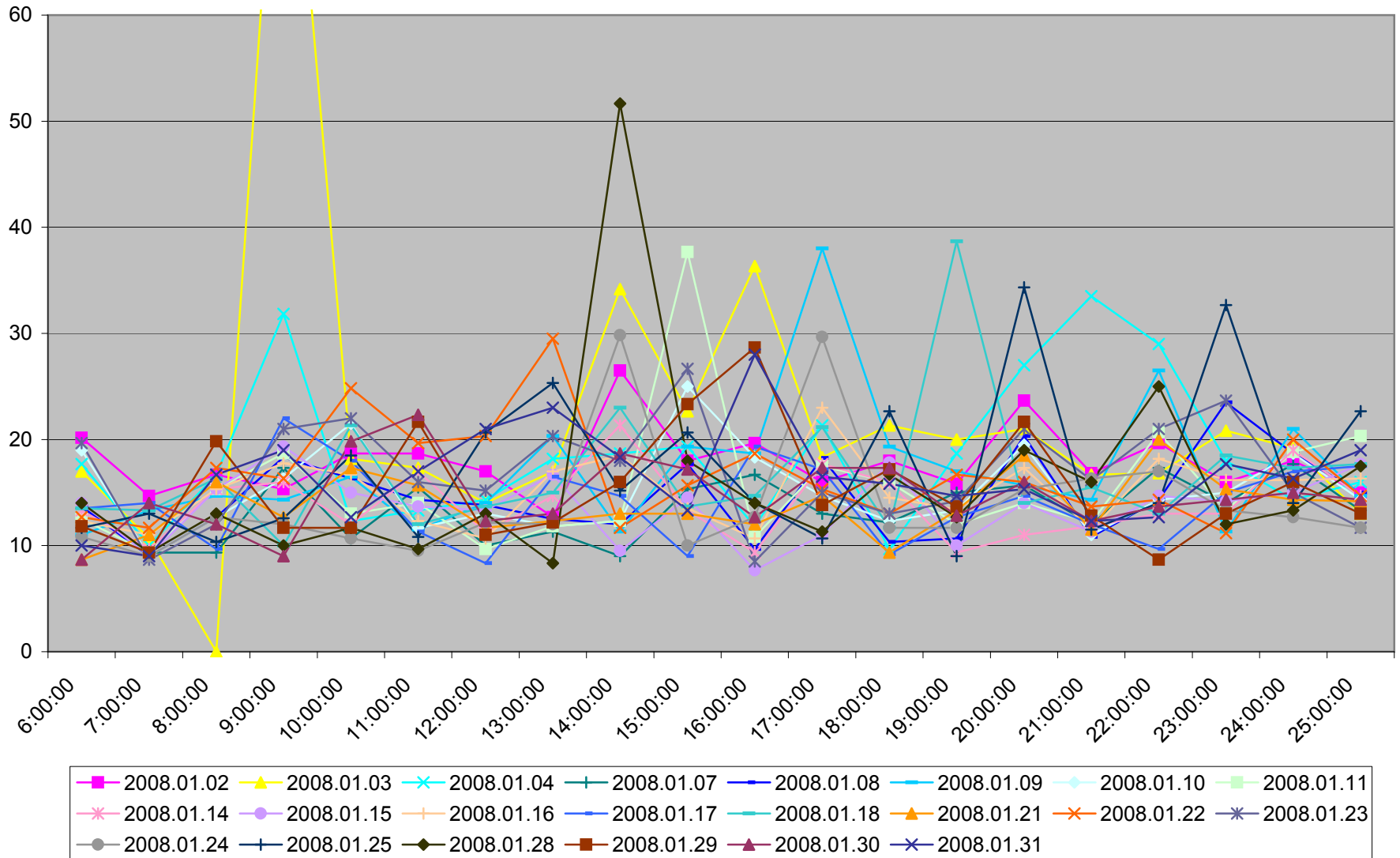


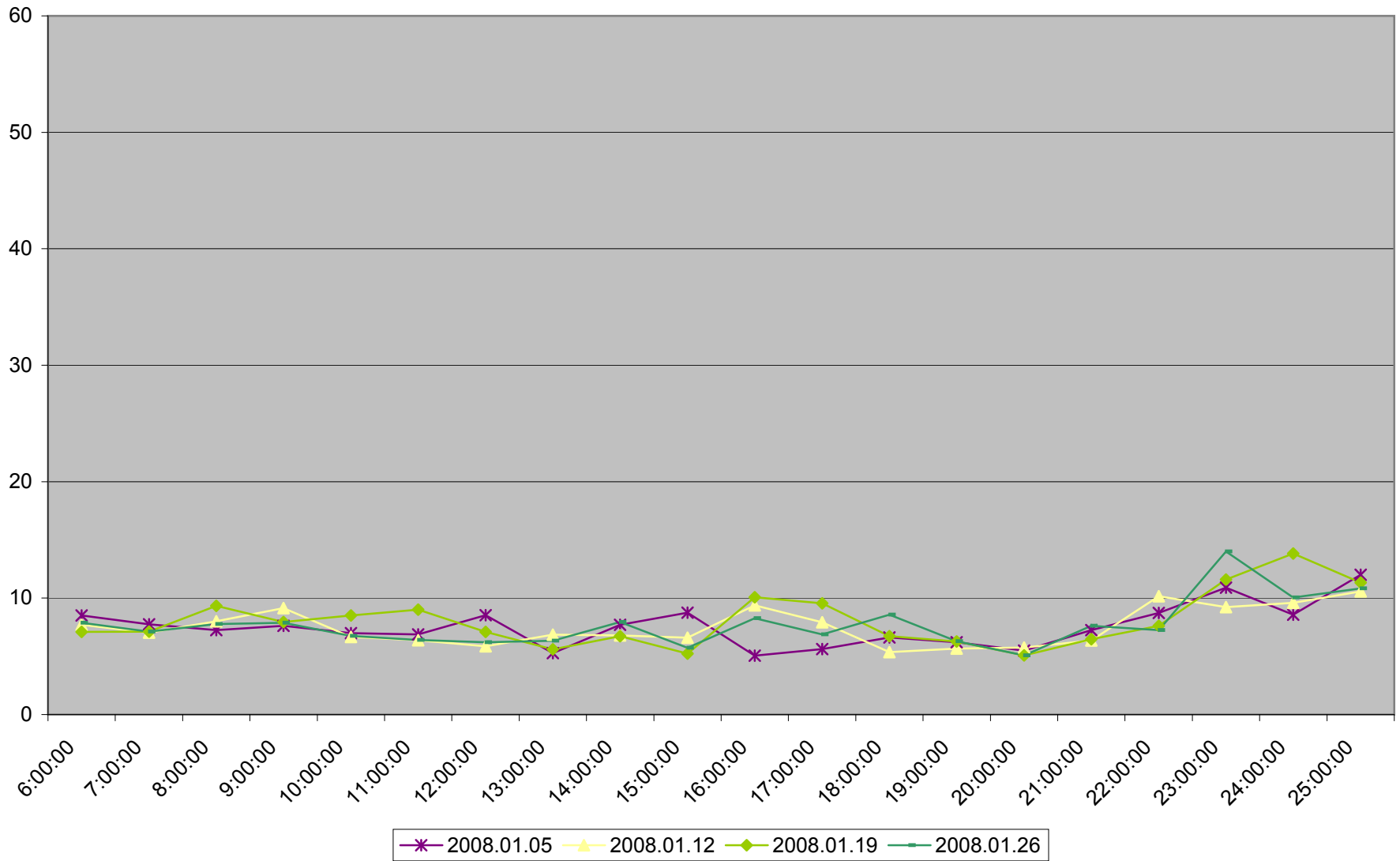
501 Queen Average Headway to Neville Loop Weekdays January 2008



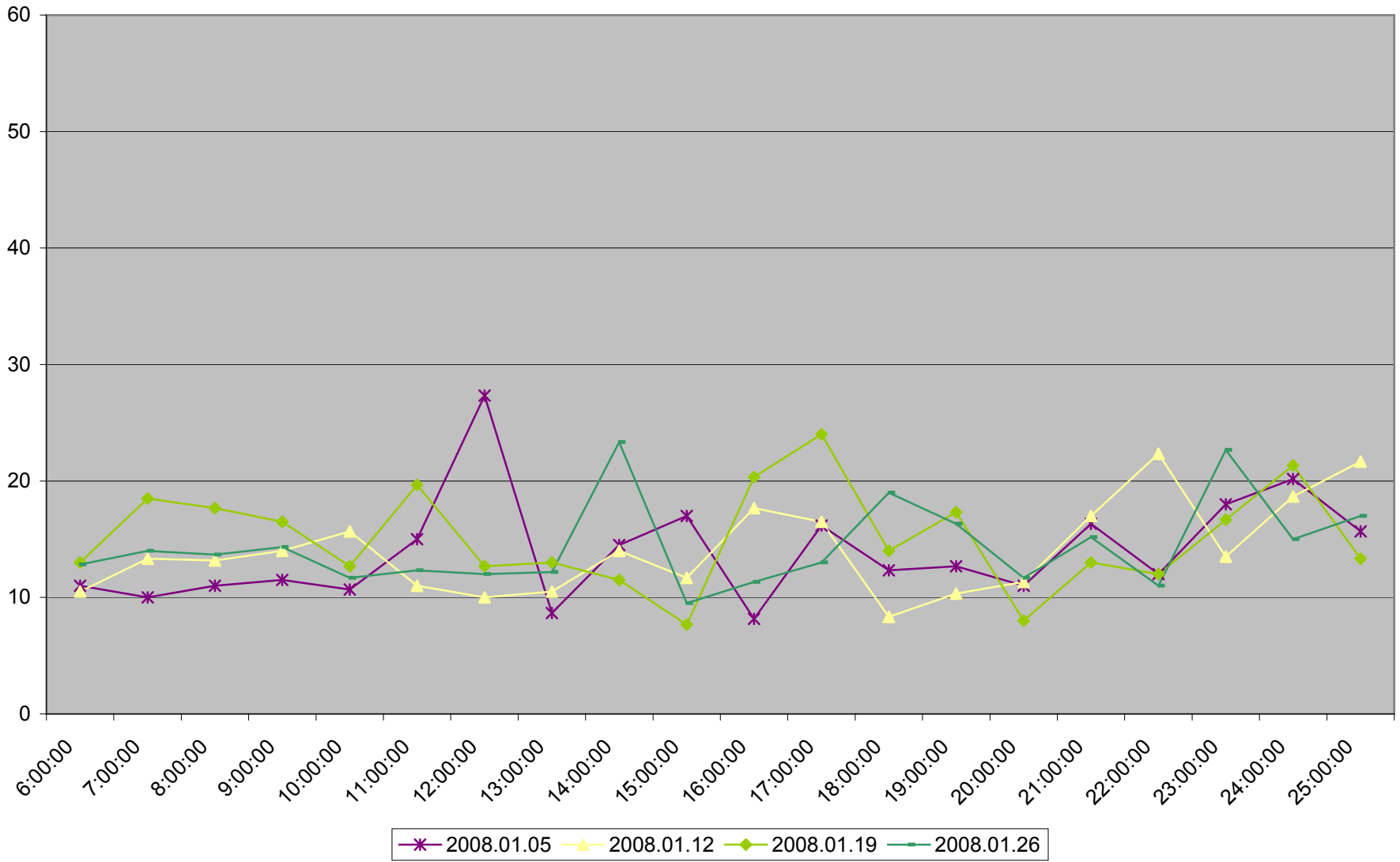
501 Queen Maximum Headway to Neville Loop Weekdays January 2008



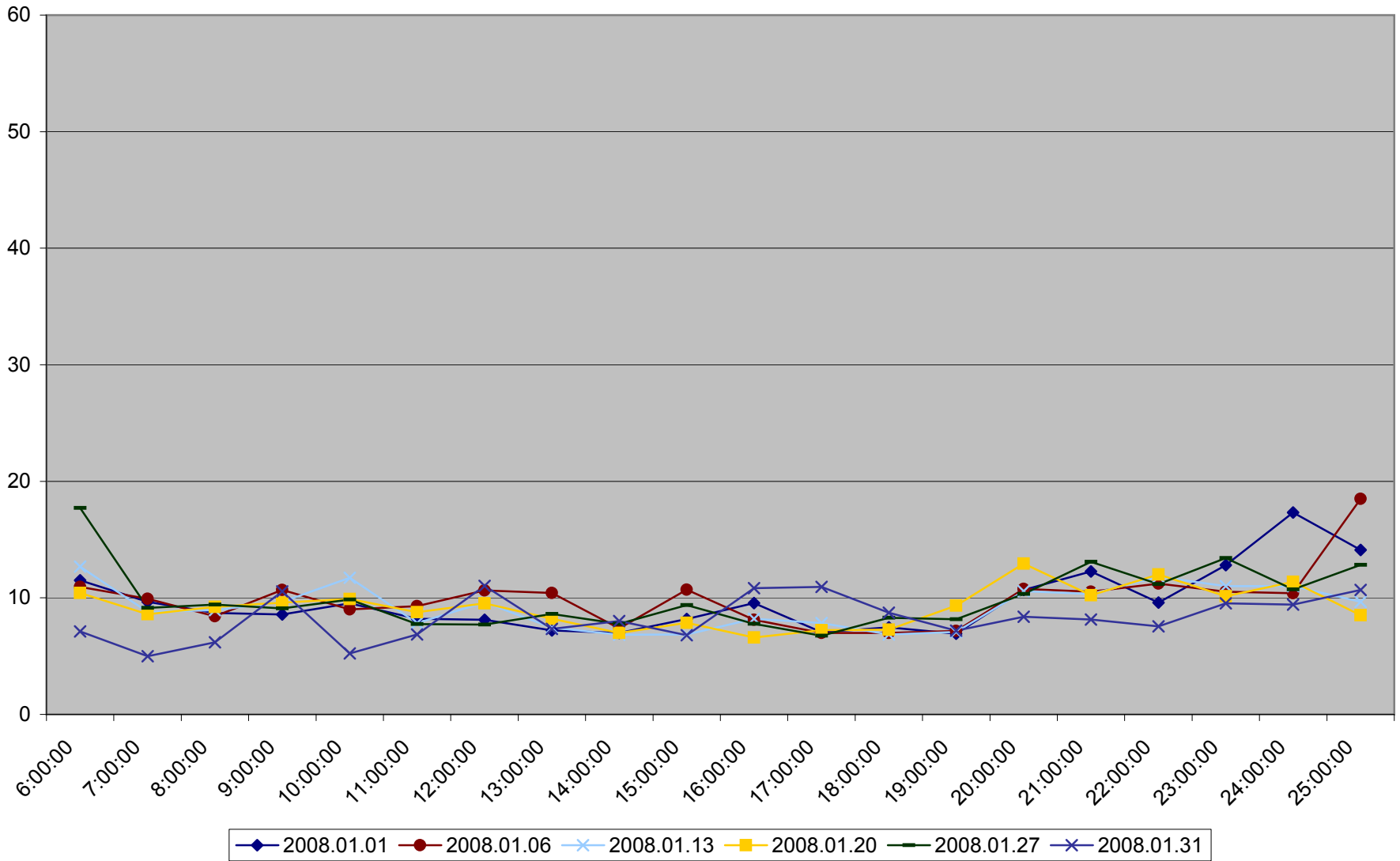
501 Queen Average Headway to Neville Loop Saturdays January 2008



501 Queen Maximum Headway to Neville Loop Saturdays January 2008



501 Queen Average Headway to Neville Loop Sundays January 2008



501 Queen Maximum Headway to Neville Loop Sundays January 2008

