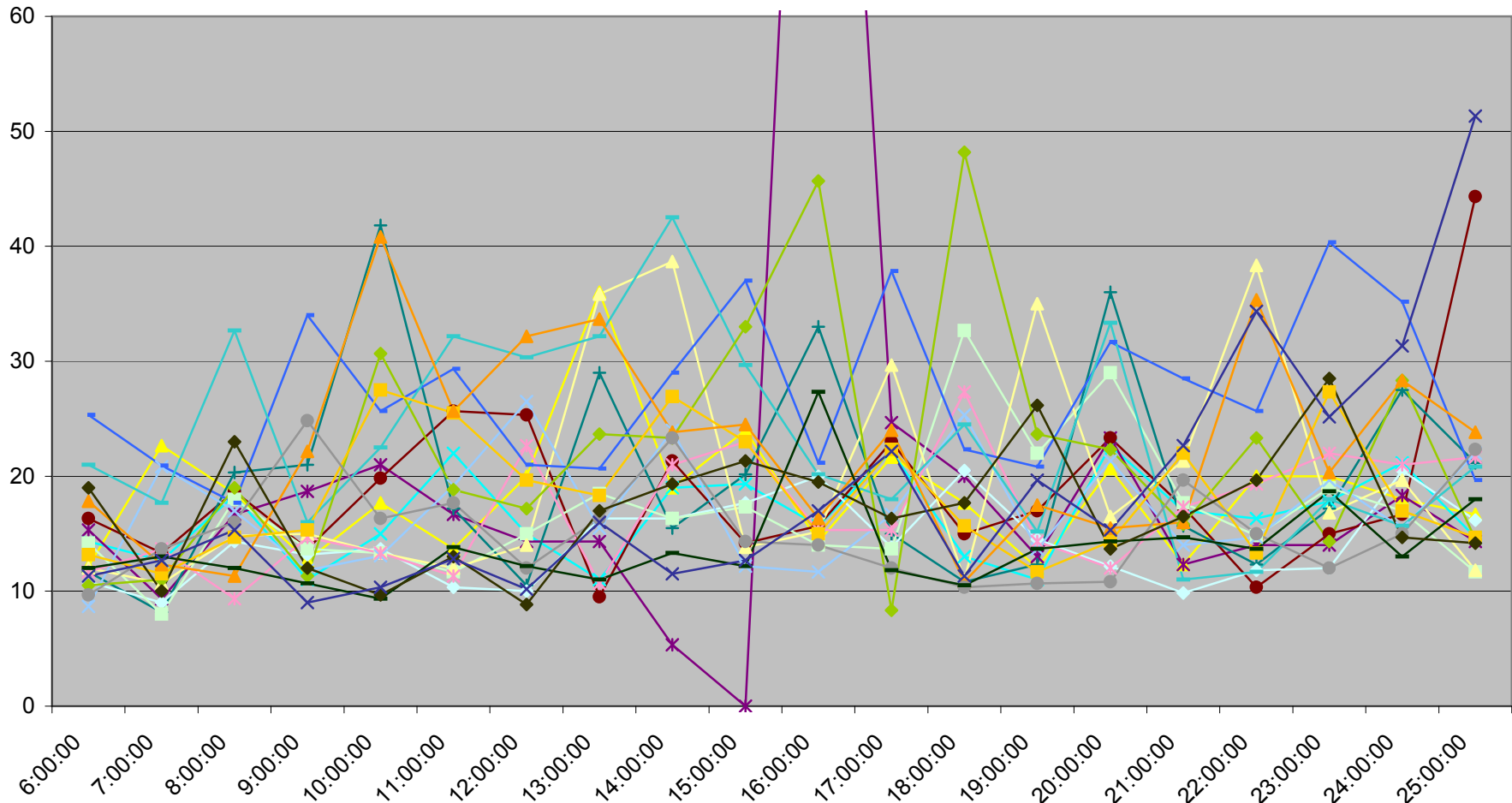
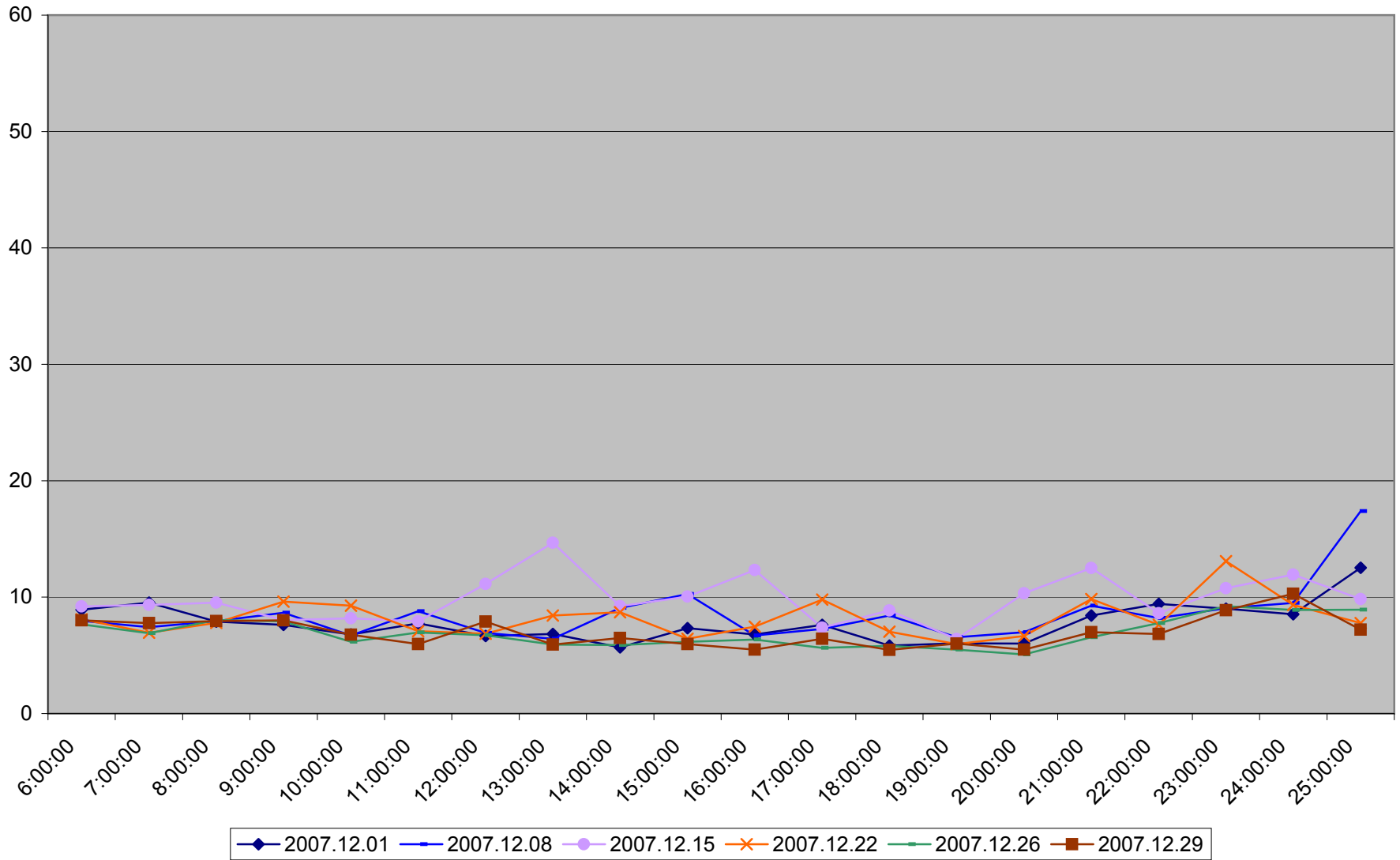


501 Queen Maximum Headway to Neville Loop Weekdays December 2007

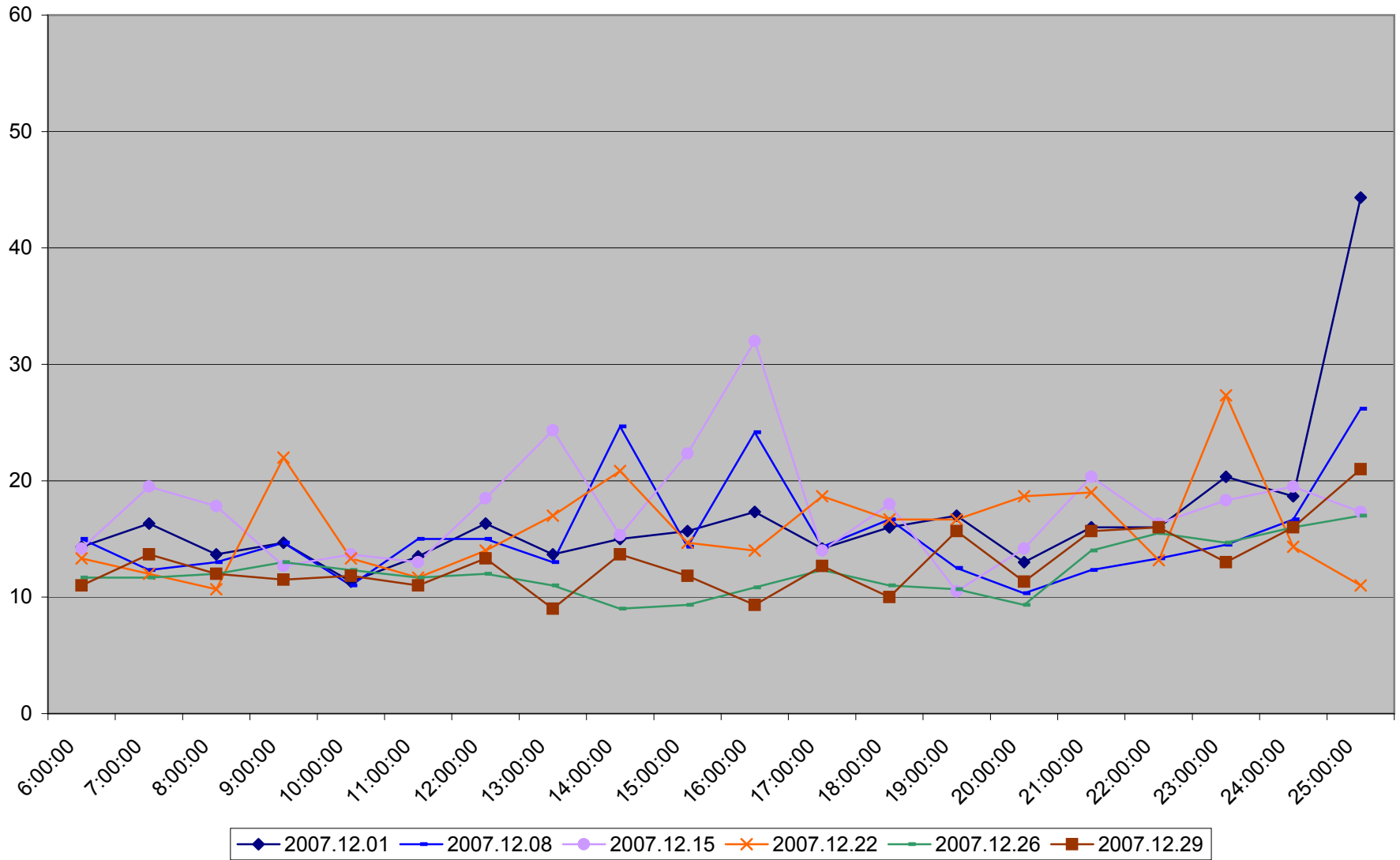


- | | | | | | | |
|------------|------------|------------|------------|------------|------------|------------|
| 2007.12.03 | 2007.12.04 | 2007.12.05 | 2007.12.06 | 2007.12.07 | 2007.12.10 | 2007.12.11 |
| 2007.12.12 | 2007.12.13 | 2007.12.14 | 2007.12.17 | 2007.12.18 | 2007.12.19 | 2007.12.20 |
| 2007.12.21 | 2007.12.24 | 2007.12.27 | 2007.12.28 | 2007.12.31 | | |

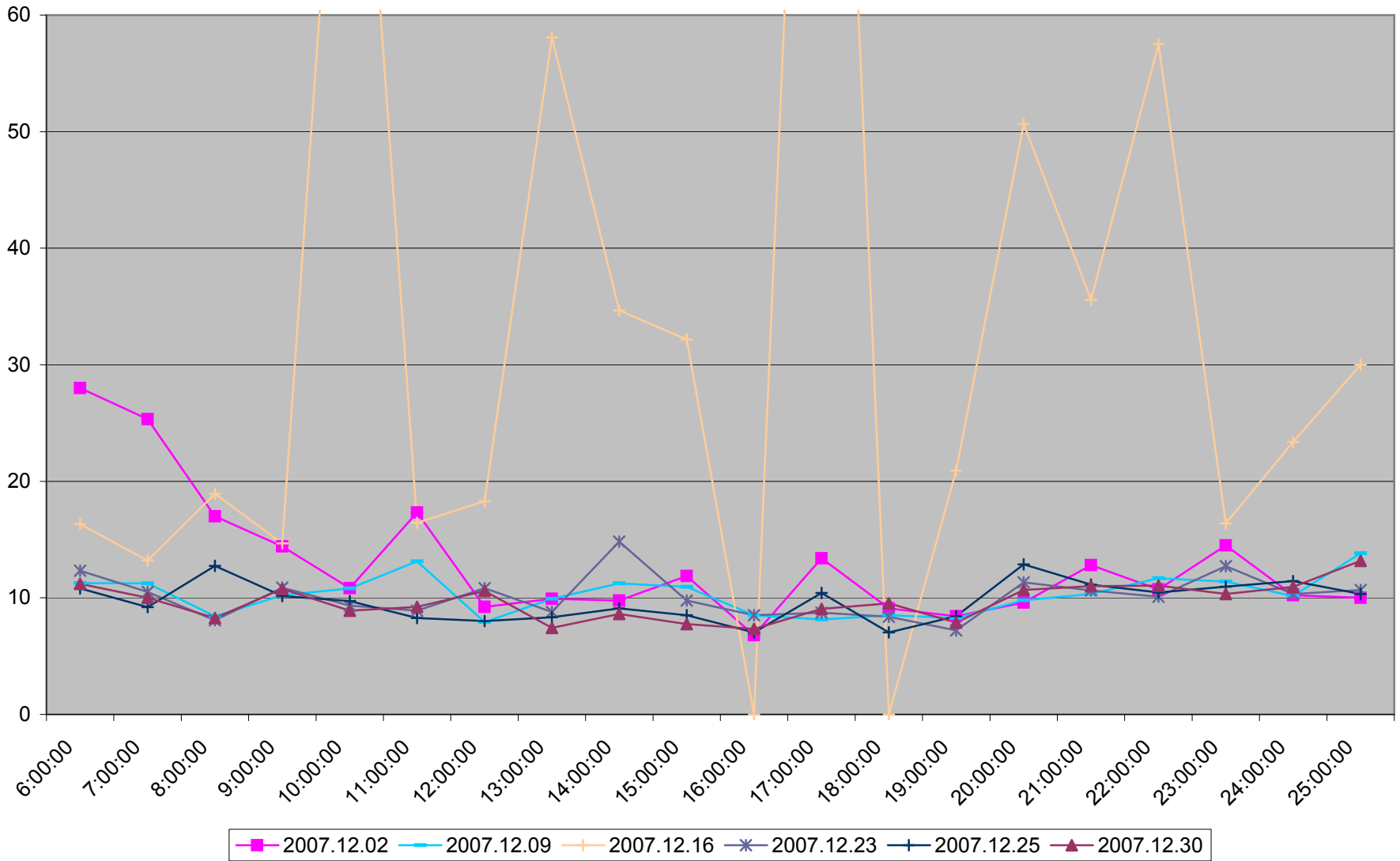
501 Queen Average Headway to Neville Loop Saturdays December 2007



501 Queen Maximum Headway to Neville Loop Saturdays December 2007



501 Queen Average Headway to Neville Loop Sundays December 2007



501 Queen Maximum Headway to Neville Loop Sundays December 2007

